

Data Path : Z:\pestpcbsrv\HPCHEM1\FID_C\Data\FC013020AL\
 Data File : FC045543.D
 Signal(s) : FID1A.CH
 Acq On : 30 Jan 2020 8:56
 Operator : DD\AJ
 Sample : I.BLK
 Misc :
 ALS Vial : 1 Sample Multiplier: 1

Integration File: autoint1.e
 Quant Time: Jan 31 00:54:33 2020
 Quant Method : Z:\pestpcbsrv\HPCHEM1\FID_C\Method\Alaphatic EPH 012120.M
 Quant Title : GC Extractables
 QLast Update : Wed Jan 22 04:15:47 2020
 Response via : Initial Calibration
 Integrator: ChemStation 6890 Scale Mode: Large solvent peaks clipped

Volume Inj. : 1 ul
 Signal Phase : Rxi-1ms
 Signal Info : 20M x 0.18mm x 0.18um

Compound	R.T.	Response	Conc Units

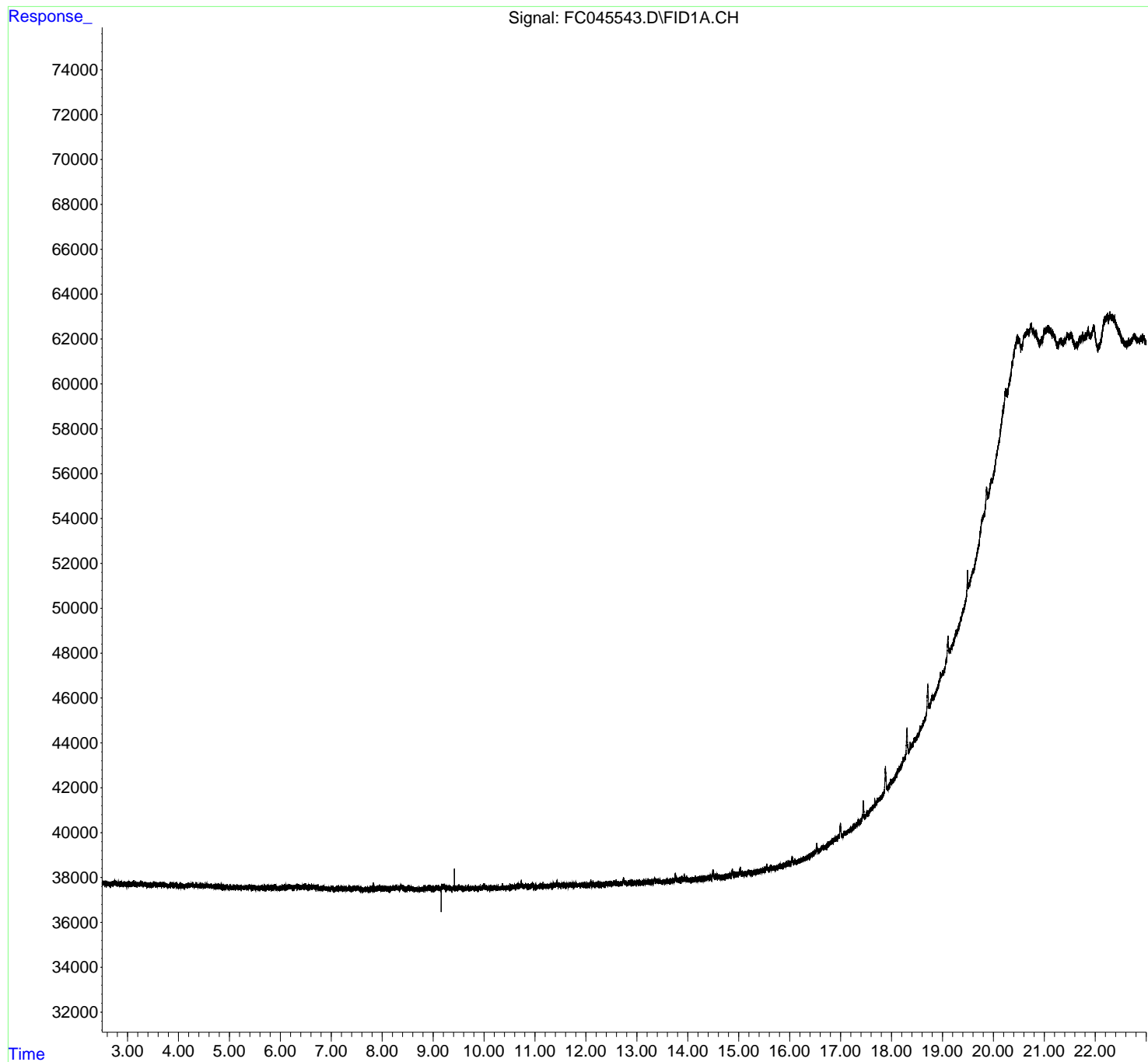
System Monitoring Compounds			
Target Compounds			

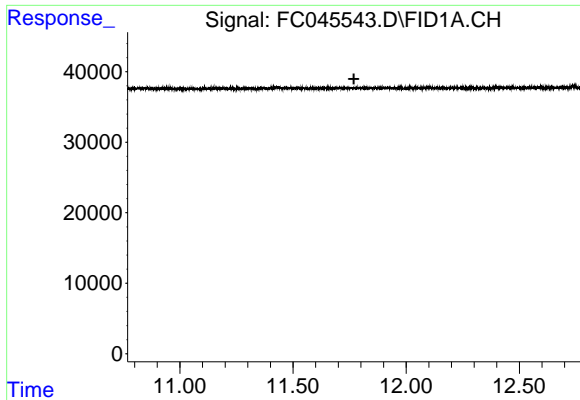
(f)=RT Delta > 1/2 Window (m)=manual int.

Data Path : Z:\pestpcbsrv\HPCHEM1\FID_C\Data\FC013020AL\
Data File : FC045543.D
Signal(s) : FID1A.CH
Acq On : 30 Jan 2020 8:56
Operator : DD\AJ
Sample : I.BLK
Misc :
ALS Vial : 1 Sample Multiplier: 1

Integration File: autoint1.e
Quant Time: Jan 31 00:54:33 2020
Quant Method : Z:\pestpcbsrv\HPCHEM1\FID_C\Method\Alaphatic EPH 012120.M
Quant Title : GC Extractables
QLast Update : Wed Jan 22 04:15:47 2020
Response via : Initial Calibration
Integrator: ChemStation 6890 Scale Mode: Large solvent peaks clipped

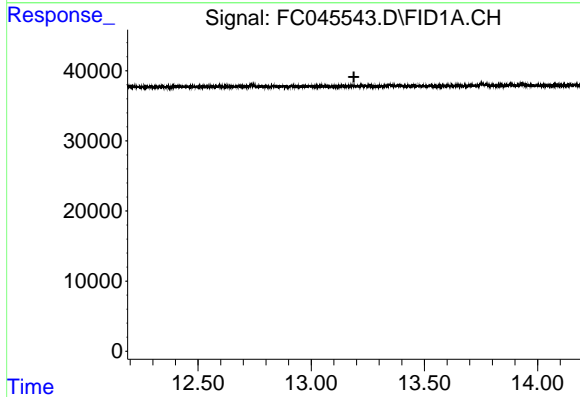
Volume Inj. : 1 ul
Signal Phase : Rxi-1ms
Signal Info : 20M x 0.18mm x 0.18um





#9 ortho-Terphenyl (SURR)

R.T.: 0.000 min
Exp R.T. : 11.769 min
Response: 0
Conc: N.D.



#12 1-chlorooctadecane (SURR)

R.T.: 0.000 min
Exp R.T. : 13.188 min
Response: 0
Conc: N.D.