

Data Path : Z:\pestpcbsrv\HPCHEM1\FID_C\Data\FC013020AL\
 Data File : FC045548.D
 Signal(s) : FID1A.CH
 Acq On : 30 Jan 2020 15:08
 Operator : DD\AJ
 Sample : L1298-01
 Misc :
 ALS Vial : 5 Sample Multiplier: 1

Integration File: autoint1.e
 Quant Time: Jan 31 00:55:28 2020
 Quant Method : Z:\pestpcbsrv\HPCHEM1\FID_C\Method\Alaphatic EPH 012120.M
 Quant Title : GC Extractables
 QLast Update : Wed Jan 22 04:15:47 2020
 Response via : Initial Calibration
 Integrator: ChemStation 6890 Scale Mode: Large solvent peaks clipped

Volume Inj. : 1 ul
 Signal Phase : Rxi-1ms
 Signal Info : 20M x 0.18mm x 0.18um

Compound	R.T.	Response	Conc Units

System Monitoring Compounds			
9) S ortho-Terphenyl (SURR)	11.764	3615828	32.892 ug/ml
Spiked Amount	50.000	Recovery	= 65.78%
12) S 1-chlorooctadecane (S...	13.185	2755470	31.692 ug/ml
Spiked Amount	50.000	Recovery	= 63.38%
Target Compounds			
14) T n-Tetracosane (C24)	15.040	241116	2.320 ug/ml
16) T n-Octacosane (C28)	17.046	308411	3.017 ug/ml

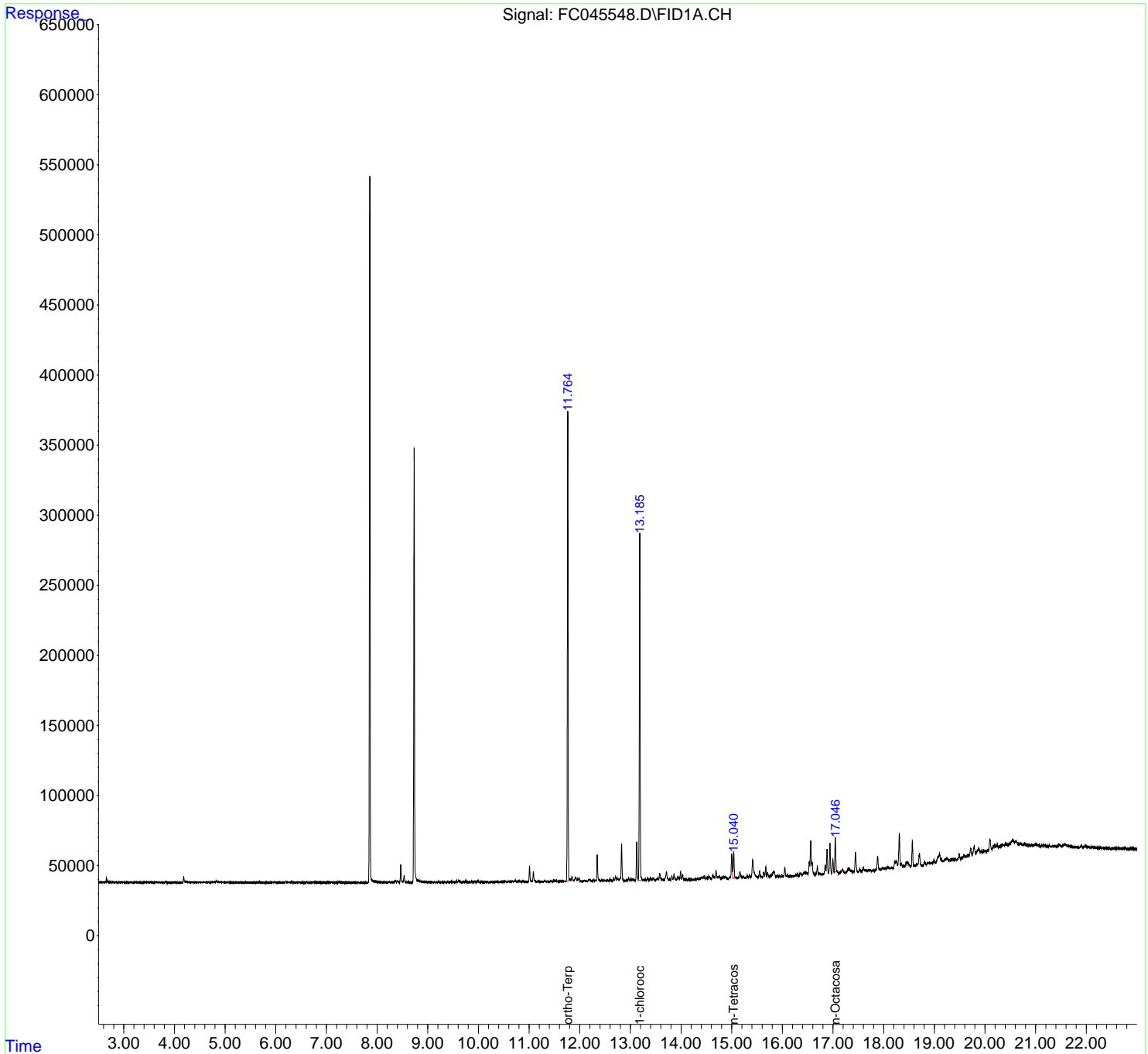
(f)=RT Delta > 1/2 Window

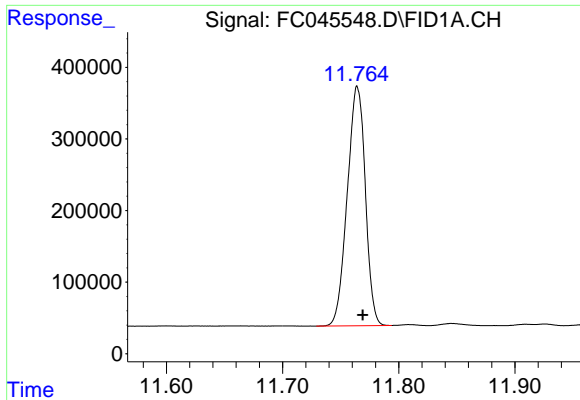
(m)=manual int.

Data Path : Z:\pestpcbsrv\HPCHEM1\FID_C\Data\FC013020AL\
Data File : FC045548.D
Signal(s) : FID1A.CH
Acq On : 30 Jan 2020 15:08
Operator : DD\AJ
Sample : L1298-01
Misc :
ALS Vial : 5 Sample Multiplier: 1

Integration File: autoint1.e
Quant Time: Jan 31 00:55:28 2020
Quant Method : Z:\pestpcbsrv\HPCHEM1\FID_C\Method\Alaphatic EPH 012120.M
Quant Title : GC Extractables
QLast Update : Wed Jan 22 04:15:47 2020
Response via : Initial Calibration
Integrator: ChemStation 6890 Scale Mode: Large solvent peaks clipped

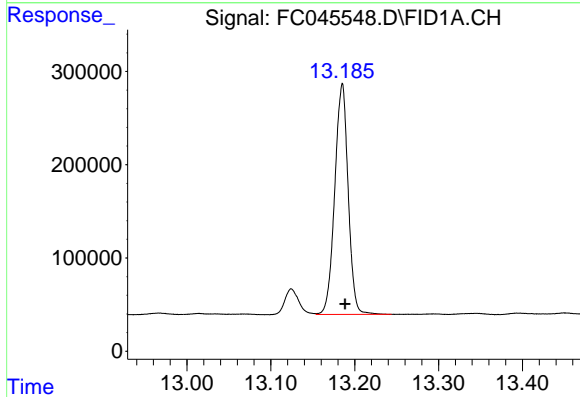
Volume Inj. : 1 ul
Signal Phase : Rxi-1ms
Signal Info : 20M x 0.18mm x 0.18um





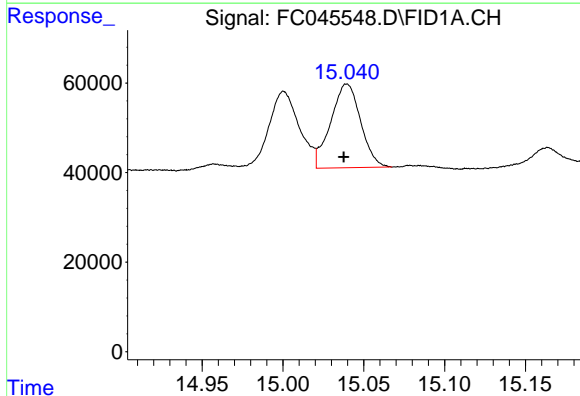
#9 ortho-Terphenyl (SURR)

R.T.: 11.764 min
Delta R.T.: -0.005 min
Response: 3615828
Conc: 32.89 ug/ml



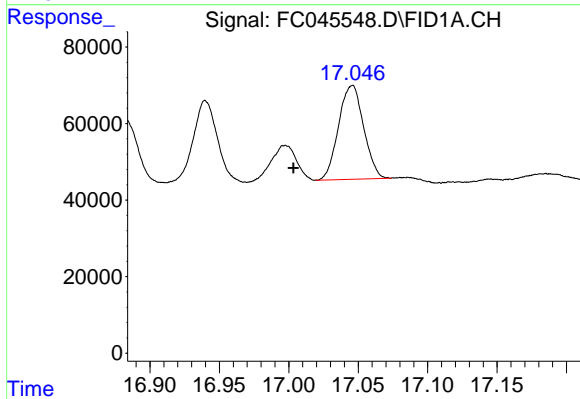
#12 1-chlorooctadecane (SURR)

R.T.: 13.185 min
Delta R.T.: -0.003 min
Response: 2755470
Conc: 31.69 ug/ml



#14 n-Tetracosane (C24)

R.T.: 15.040 min
Delta R.T.: 0.002 min
Response: 241116
Conc: 2.32 ug/ml



#16 n-Octacosane (C28)

R.T.: 17.046 min
Delta R.T.: 0.042 min
Response: 308411
Conc: 3.02 ug/ml