

Data Path : Z:\pestpcbsrv\HPCHEM1\FID_C\Data\FC013020AL\
 Data File : FC045557.D
 Signal(s) : FID1A.CH
 Acq On : 30 Jan 2020 20:29
 Operator : DD\AJ
 Sample : L1013-08
 Misc :
 ALS Vial : 14 Sample Multiplier: 1

Integration File: autoint1.e
 Quant Time: Jan 31 00:57:21 2020
 Quant Method : Z:\pestpcbsrv\HPCHEM1\FID_C\Method\Alaphatic EPH 012120.M
 Quant Title : GC Extractables
 QLast Update : Wed Jan 22 04:15:47 2020
 Response via : Initial Calibration
 Integrator: ChemStation 6890 Scale Mode: Large solvent peaks clipped

Volume Inj. : 1 ul
 Signal Phase : Rxi-1ms
 Signal Info : 20M x 0.18mm x 0.18um

Compound	R.T.	Response	Conc Units

System Monitoring Compounds			
9) S ortho-Terphenyl (SURR)	11.763	3447404	31.360 ug/ml
Spiked Amount	50.000	Recovery	= 62.72%
12) S 1-chlorooctadecane (S...	13.184	2774528	31.911 ug/ml
Spiked Amount	50.000	Recovery	= 63.82%
Target Compounds			
14) T n-Tetracosane (C24)	15.040	185665	1.787 ug/ml
17) T n-Tricontane (C30)	17.880	292493	2.979 ug/ml

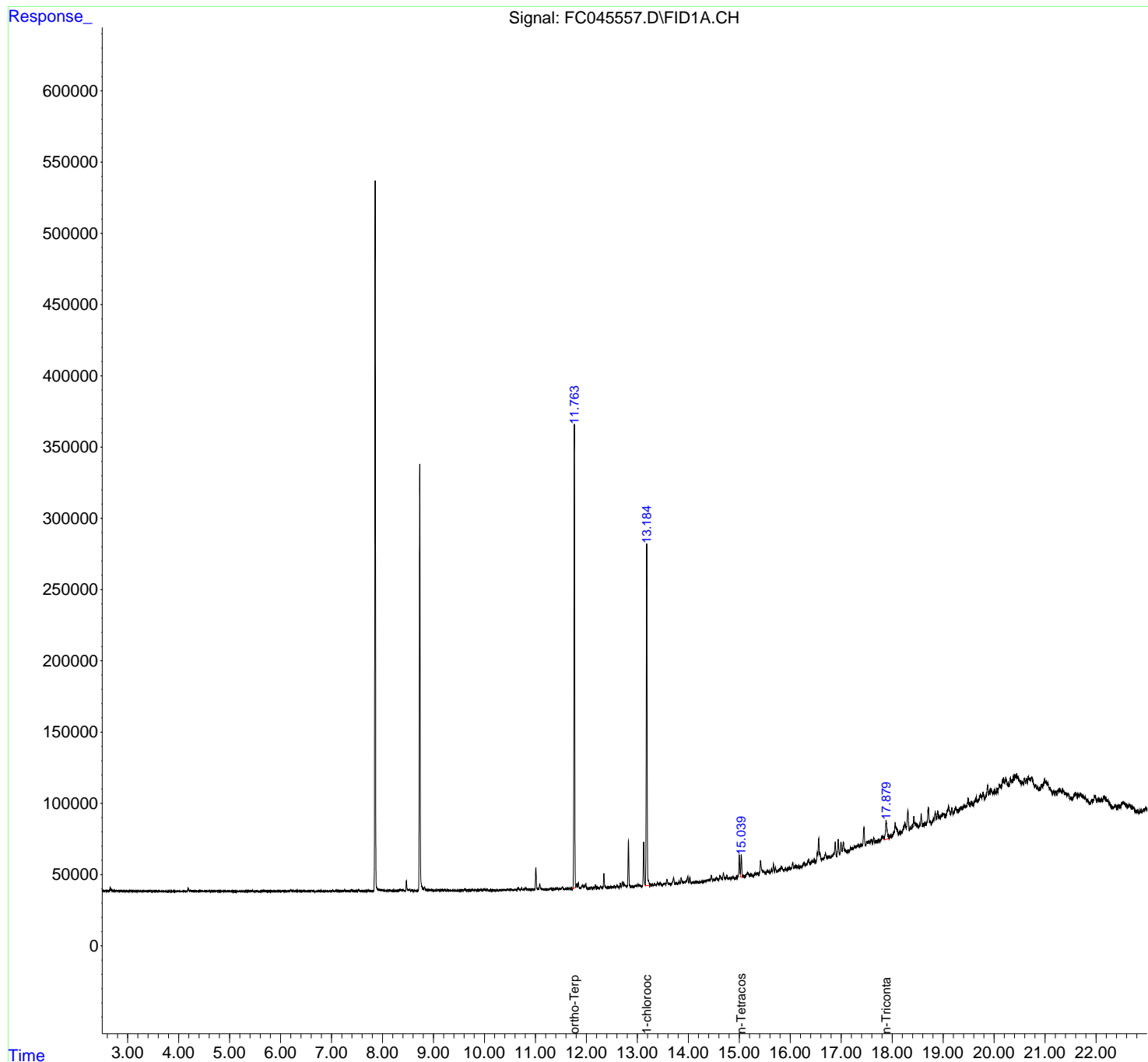
(f)=RT Delta > 1/2 Window

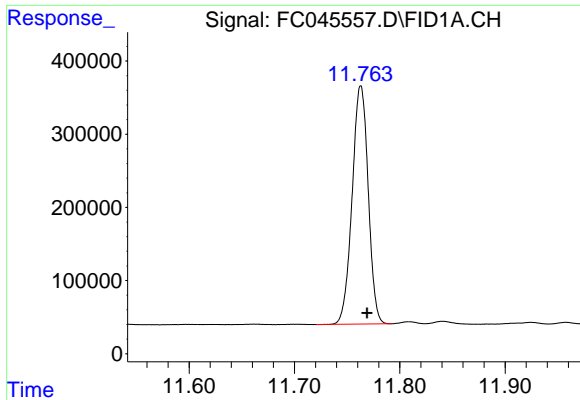
(m)=manual int.

Data Path : Z:\pestpcbsrv\HPCHEM1\FID_C\Data\FC013020AL\
Data File : FC045557.D
Signal(s) : FID1A.CH
Acq On : 30 Jan 2020 20:29
Operator : DD\AJ
Sample : L1013-08
Misc :
ALS Vial : 14 Sample Multiplier: 1

Integration File: autoint1.e
Quant Time: Jan 31 00:57:21 2020
Quant Method : Z:\pestpcbsrv\HPCHEM1\FID_C\Method\Alaphatic EPH 012120.M
Quant Title : GC Extractables
QLast Update : Wed Jan 22 04:15:47 2020
Response via : Initial Calibration
Integrator: ChemStation 6890 Scale Mode: Large solvent peaks clipped

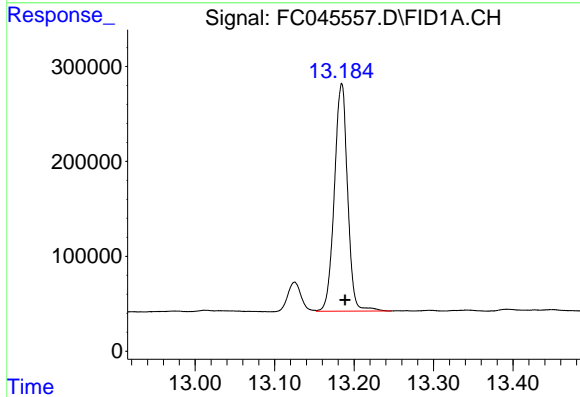
Volume Inj. : 1 ul
Signal Phase : Rxi-1ms
Signal Info : 20M x 0.18mm x 0.18um





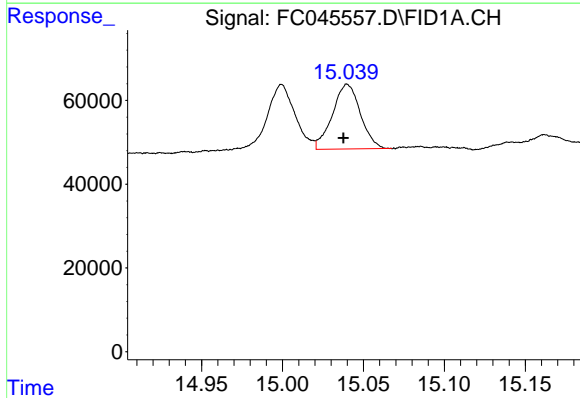
#9 ortho-Terphenyl (SURR)

R.T.: 11.763 min
 Delta R.T.: -0.006 min
 Response: 3447404
 Conc: 31.36 ug/ml



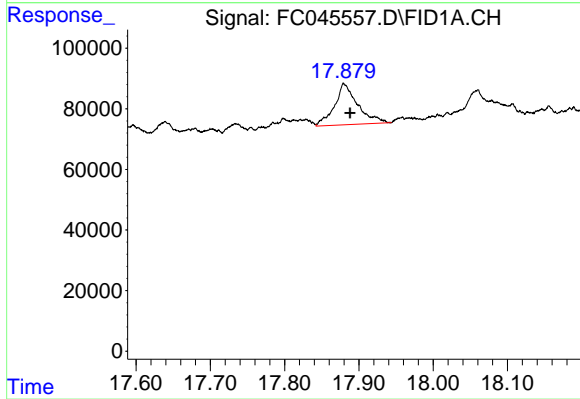
#12 1-chlorooctadecane (SURR)

R.T.: 13.184 min
 Delta R.T.: -0.004 min
 Response: 2774528
 Conc: 31.91 ug/ml



#14 n-Tetracosane (C24)

R.T.: 15.040 min
 Delta R.T.: 0.002 min
 Response: 185665
 Conc: 1.79 ug/ml



#17 n-Tricontane (C30)

R.T.: 17.880 min
 Delta R.T.: -0.008 min
 Response: 292493
 Conc: 2.98 ug/ml