

Data Path : Z:\pestpcbsrv\HPCHEM1\FID\_C\Data\FC013120AL\  
 Data File : FC045612.D  
 Signal(s) : FID1A.CH  
 Acq On : 01 Feb 2020 7:30  
 Operator : DD\AJ  
 Sample : L1325-07  
 Misc :  
 ALS Vial : 35 Sample Multiplier: 1

Instrument :  
 FID\_C  
 ClientSampleId :  
 72-11976

Integration File: autoint1.e  
 Quant Time: Feb 03 00:09:05 2020  
 Quant Method : Z:\pestpcbsrv\HPCHEM1\FID\_C\Method\Alaphatic EPH 012120.M  
 Quant Title : GC Extractables  
 QLast Update : Wed Jan 22 04:15:47 2020  
 Response via : Initial Calibration  
 Integrator: ChemStation 6890 Scale Mode: Large solvent peaks clipped

Volume Inj. : 1 ul  
 Signal Phase : Rxi-1ms  
 Signal Info : 20M x 0.18mm x 0.18um

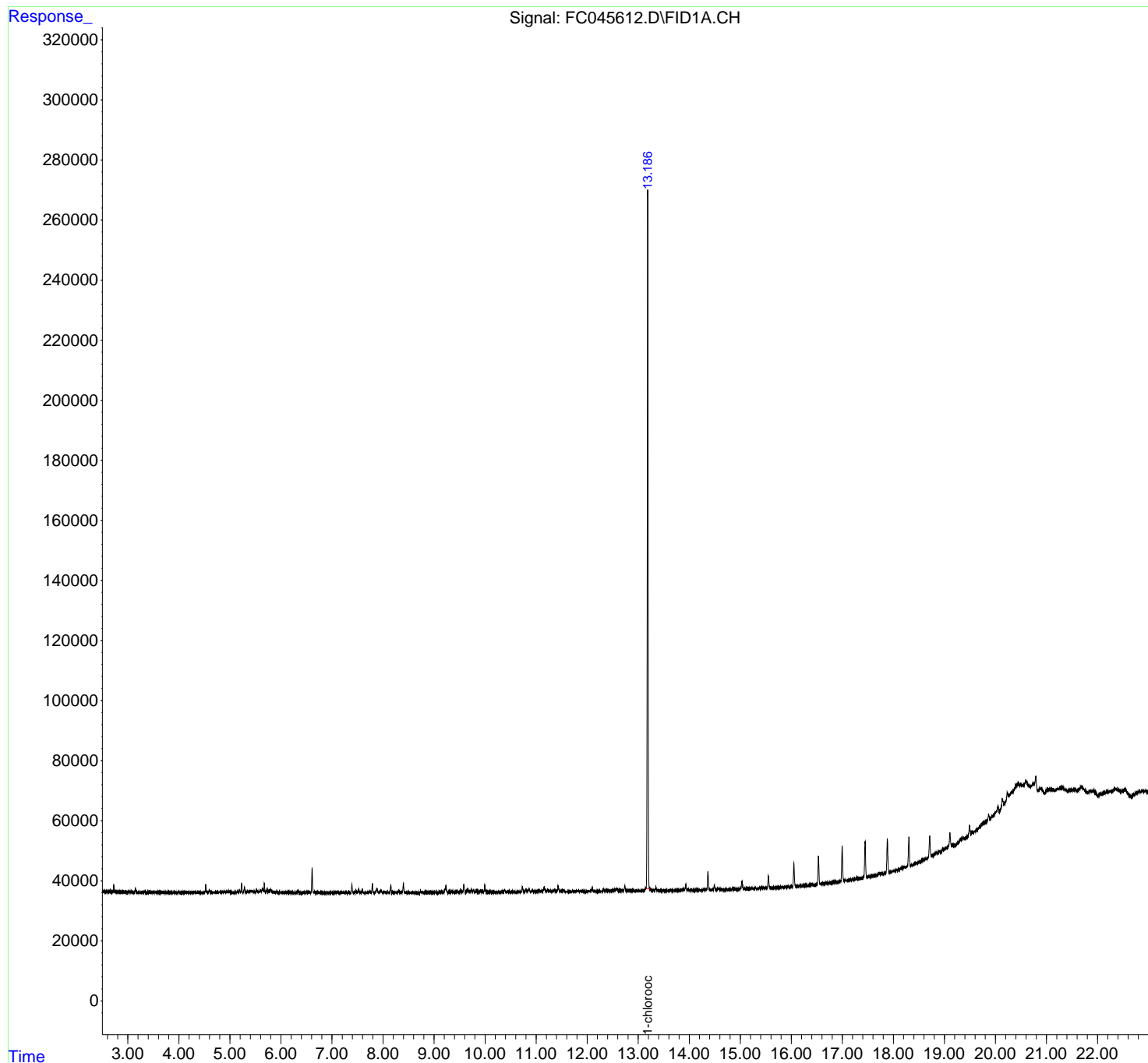
Compound	R.T.	Response	Conc Units
-----			
System Monitoring Compounds			
12) S 1-chlorooctadecane (S...	13.187	2667674	30.682 ug/ml
Spiked Amount	50.000	Recovery	= 61.36%
Target Compounds			
-----			
(f)=RT Delta > 1/2 Window		(m)=manual int.	

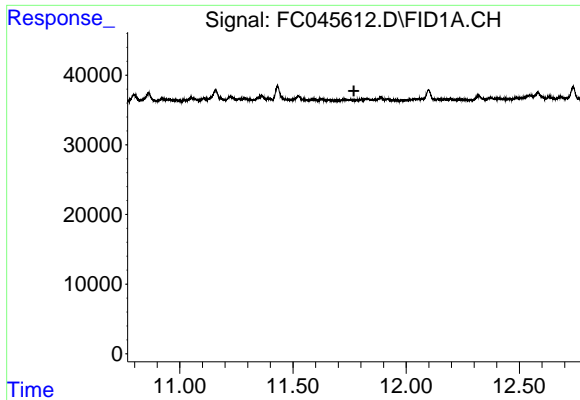
Data Path : Z:\pestpcbsrv\HPCHEM1\FID\_C\Data\FC013120AL\  
Data File : FC045612.D  
Signal(s) : FID1A.CH  
Acq On : 01 Feb 2020 7:30  
Operator : DD\AJ  
Sample : L1325-07  
Misc :  
ALS Vial : 35 Sample Multiplier: 1

Instrument :  
FID\_C  
ClientSampleId :  
72-11976

Integration File: autoint1.e  
Quant Time: Feb 03 00:09:05 2020  
Quant Method : Z:\pestpcbsrv\HPCHEM1\FID\_C\Method\Aliphatic EPH 012120.M  
Quant Title : GC Extractables  
QLast Update : Wed Jan 22 04:15:47 2020  
Response via : Initial Calibration  
Integrator: ChemStation 6890 Scale Mode: Large solvent peaks clipped

Volume Inj. : 1 ul  
Signal Phase : Rxi-1ms  
Signal Info : 20M x 0.18mm x 0.18um

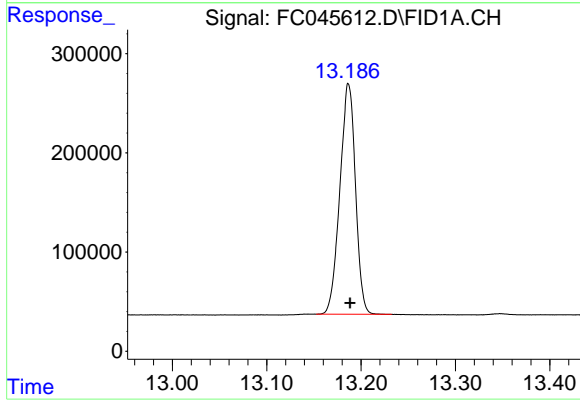




#9 ortho-Terphenyl (SURR)

R.T.: 0.000 min  
Exp R.T.: 11.769 min  
Response: 0  
Conc: N.D.

Instrument :  
FID\_C  
ClientSampled :  
72-11976



#12 1-chlorooctadecane (SURR)

R.T.: 13.187 min  
Delta R.T.: -0.002 min  
Response: 2667674  
Conc: 30.68 ug/ml