

Data Path : Z:\pestpcbsrv\HPCHEM1\FID_C\Data\FC020224AL\
 Data File : FC065596.D
 Signal(s) : FID1A.ch
 Acq On : 02 Feb 2024 12:50
 Operator : YP/AJ
 Sample : P1187-09
 Misc :
 ALS Vial : 6 Sample Multiplier: 1

Integration File: sample.E
 Quant Time: Feb 05 04:00:11 2024
 Quant Method : Z:\pestpcbsrv\HPCHEM1\FID_C\Method\Aliphatic EPH 010824.M
 Quant Title : GC Extractables
 QLast Update : Mon Jan 08 15:12:33 2024
 Response via : Initial Calibration
 Integrator: ChemStation

Volume Inj. : 1 ul
 Signal Phase : Rxi-1ms
 Signal Info : 20M x 0.18mm x 0.18um

Compound	R.T.	Response	Conc Units

System Monitoring Compounds			
12) S 1-chlorooctadecane (S... Spiked Amount 50.000	12.927	4504973 Recovery =	33.421 ug/ml 66.84%
Target Compounds			
1) T n-Nonane (C9)	3.292	183224	1.173 ug/ml
2) T n-Decane (C10)	4.354	244120	1.543 ug/ml
4) T n-Dodecane (C12)	6.365	404146	2.519 ug/ml
6) T n-Tetradecane (C14)	8.155	317128	2.022 ug/ml
7) T n-Hexadecane (C16)	9.749	295748	1.849 ug/ml
8) T n-Octadecane (C18)	11.183	364546	2.226 ug/ml
10) T n-Eicosane (C20)	12.485	401884	2.523 ug/ml
11) T n-Heneicosane (C21)	13.093	395819	2.523 ug/ml
13) T n-Docosane (C22)	13.678	393111	2.518 ug/ml
14) T n-Tetracosane (C24)	14.775	399609	2.571 ug/ml
15) T n-Hexacosane (C26)	15.791	402702	2.623 ug/ml
16) T n-Octacosane (C28)	16.735	402954	2.673 ug/ml
17) T n-Tricontane (C30)	17.618	413935	2.710 ug/ml
18) T n-Dotriacontane (C32)	18.445	416150	2.764 ug/ml
19) T n-Tetratriacontane (C34)	19.224	412194	2.871 ug/ml
20) T n-Hexatriacontane (C36)	19.961	416712	3.025 ug/ml
21) T n-Octatriacontane (C38)	20.679	470665	3.402 ug/ml
22) T n-Tetracontane (C40)	21.551	498670	3.604 ug/ml

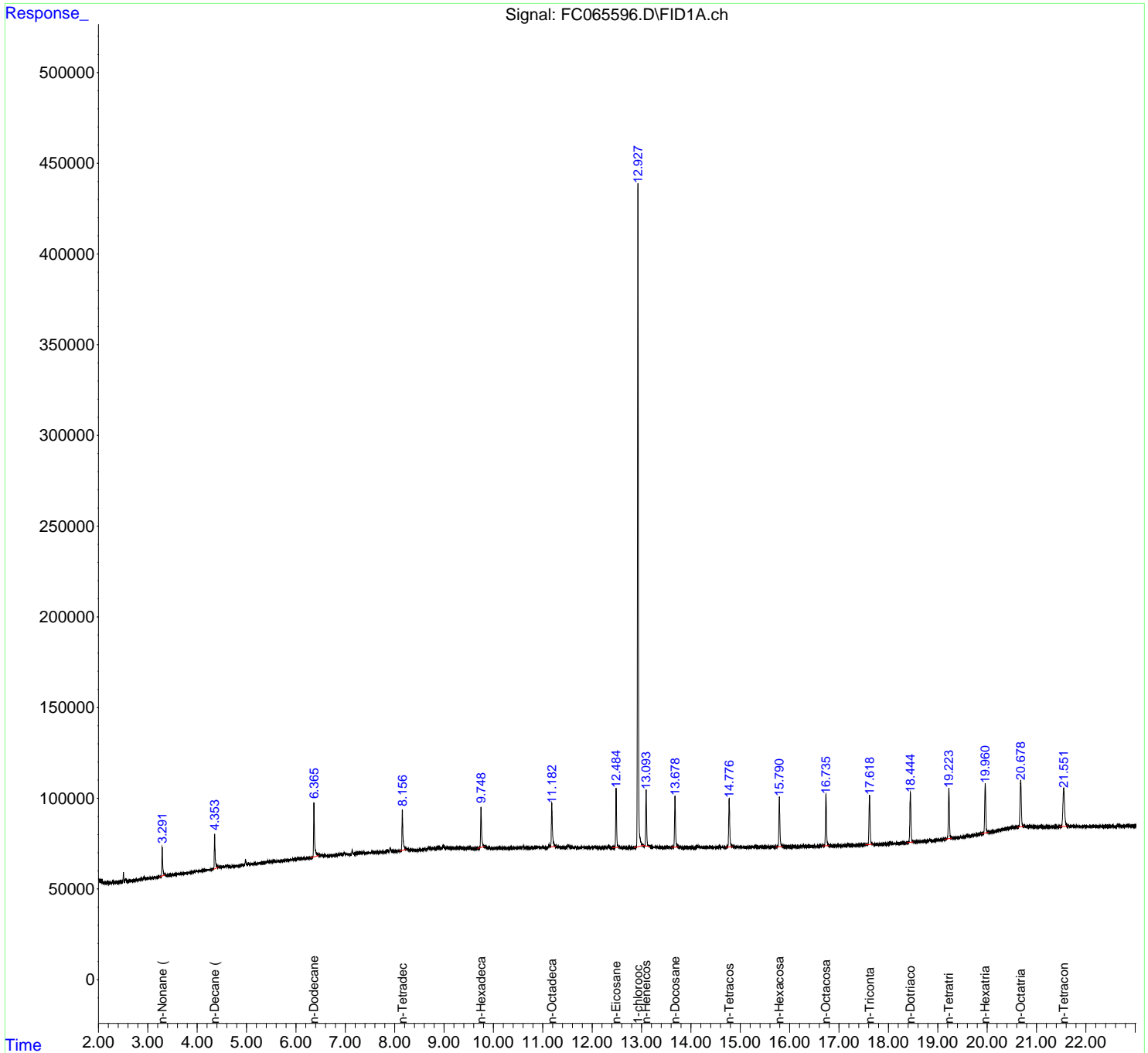
(f)=RT Delta > 1/2 Window

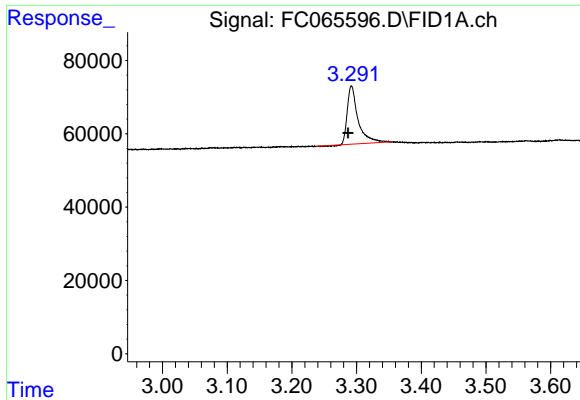
(m)=manual int.

Data Path : Z:\pestpcbsrv\HPCHEM1\FID_C\Data\FC020224AL\
 Data File : FC065596.D
 Signal(s) : FID1A.ch
 Acq On : 02 Feb 2024 12:50
 Operator : YP/AJ
 Sample : P1187-09
 Misc :
 ALS Vial : 6 Sample Multiplier: 1

Integration File: sample.E
 Quant Time: Feb 05 04:00:11 2024
 Quant Method : Z:\pestpcbsrv\HPCHEM1\FID_C\Method\Aliphatic EPH 010824.M
 Quant Title : GC Extractables
 QLast Update : Mon Jan 08 15:12:33 2024
 Response via : Initial Calibration
 Integrator: ChemStation

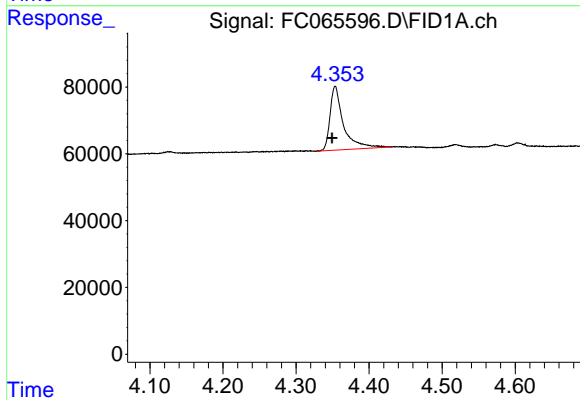
Volume Inj. : 1 ul
 Signal Phase : Rxi-1ms
 Signal Info : 20M x 0.18mm x 0.18um





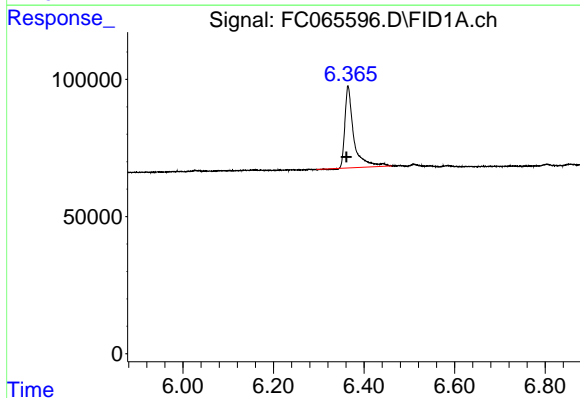
#1 n-Nonane (C9)

R.T.: 3.292 min
Delta R.T.: 0.005 min
Response: 183224
Conc: 1.17 ug/ml



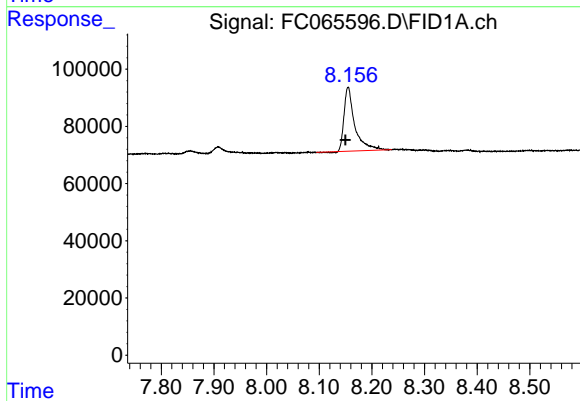
#2 n-Decane (C10)

R.T.: 4.354 min
Delta R.T.: 0.004 min
Response: 244120
Conc: 1.54 ug/ml



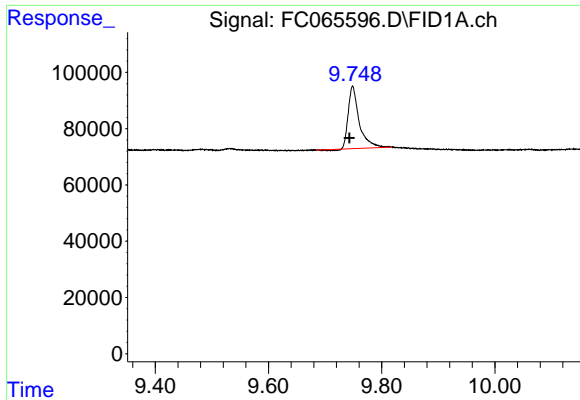
#4 n-Dodecane (C12)

R.T.: 6.365 min
Delta R.T.: 0.004 min
Response: 404146
Conc: 2.52 ug/ml

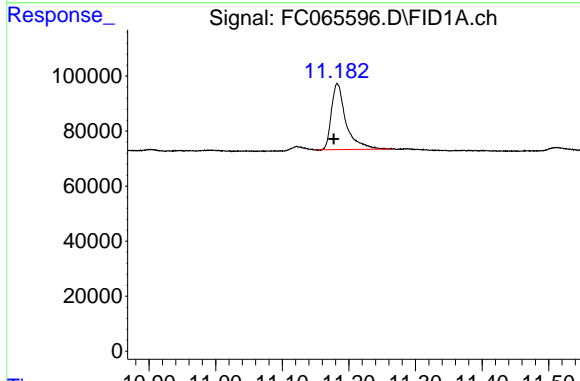


#6 n-Tetradecane (C14)

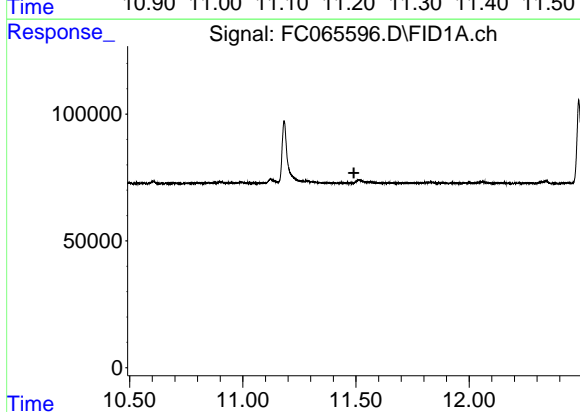
R.T.: 8.155 min
Delta R.T.: 0.005 min
Response: 317128
Conc: 2.02 ug/ml



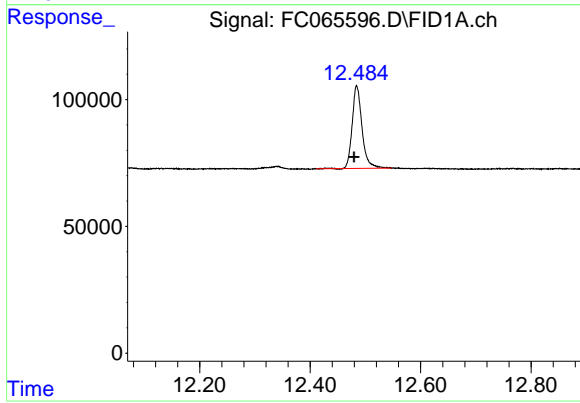
#7 n-Hexadecane (C16)
 R.T.: 9.749 min
 Delta R.T.: 0.006 min
 Response: 295748
 Conc: 1.85 ug/ml



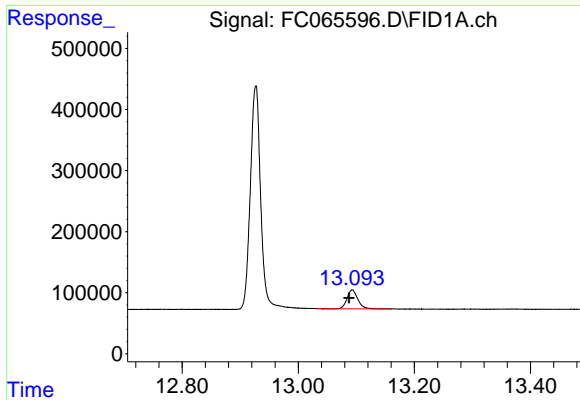
#8 n-Octadecane (C18)
 R.T.: 11.183 min
 Delta R.T.: 0.006 min
 Response: 364546
 Conc: 2.23 ug/ml



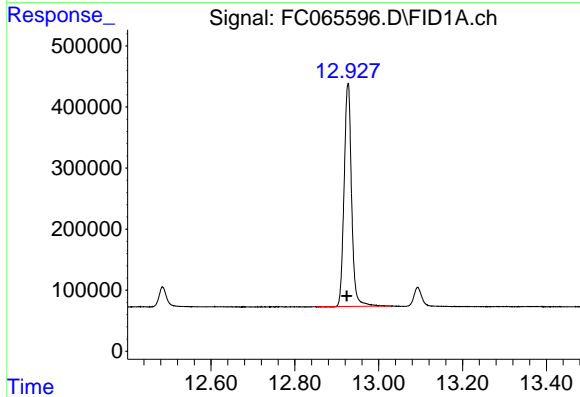
#9 ortho-Terphenyl (SURR)
 R.T.: 0.000 min
 Exp R.T. : 11.491 min
 Response: 0
 Conc: N.D.



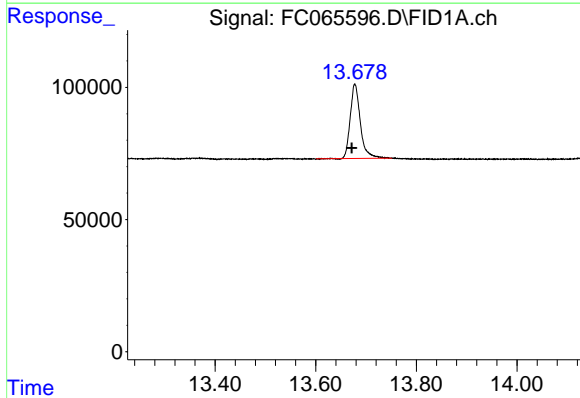
#10 n-Eicosane (C20)
 R.T.: 12.485 min
 Delta R.T.: 0.005 min
 Response: 401884
 Conc: 2.52 ug/ml



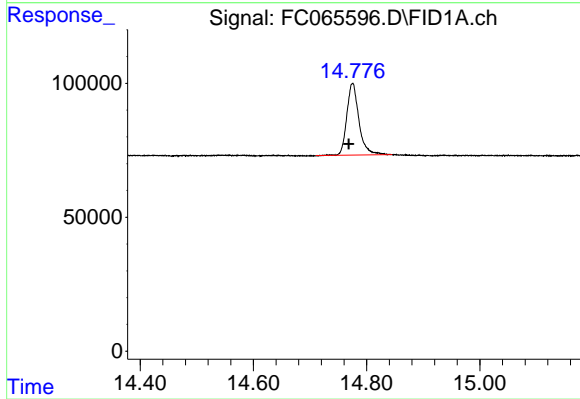
#11 n-Heneicosane (C21)
R.T.: 13.093 min
Delta R.T.: 0.006 min
Response: 395819
Conc: 2.52 ug/ml



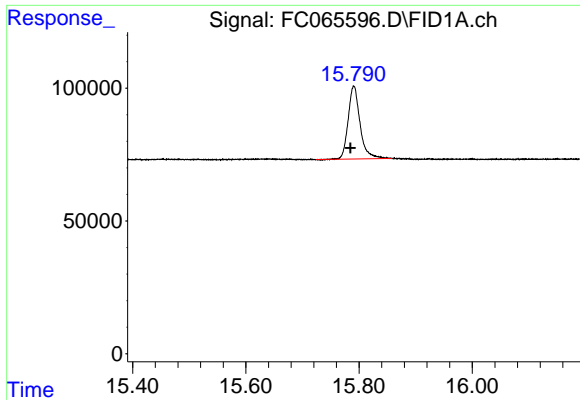
#12 1-chlorooctadecane (SURR)
R.T.: 12.927 min
Delta R.T.: 0.003 min
Response: 4504973
Conc: 33.42 ug/ml



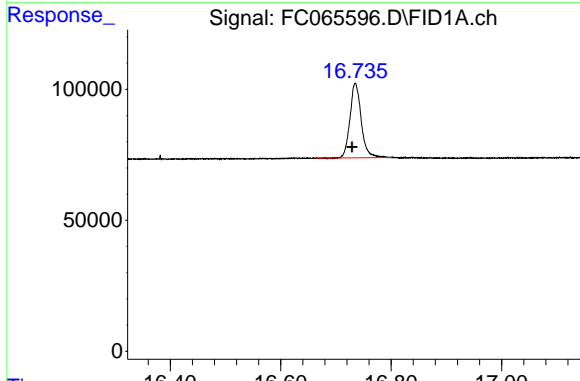
#13 n-Docosane (C22)
R.T.: 13.678 min
Delta R.T.: 0.007 min
Response: 393111
Conc: 2.52 ug/ml



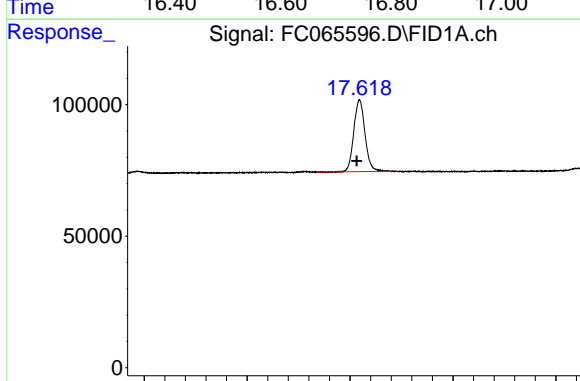
#14 n-Tetracosane (C24)
R.T.: 14.775 min
Delta R.T.: 0.007 min
Response: 399609
Conc: 2.57 ug/ml



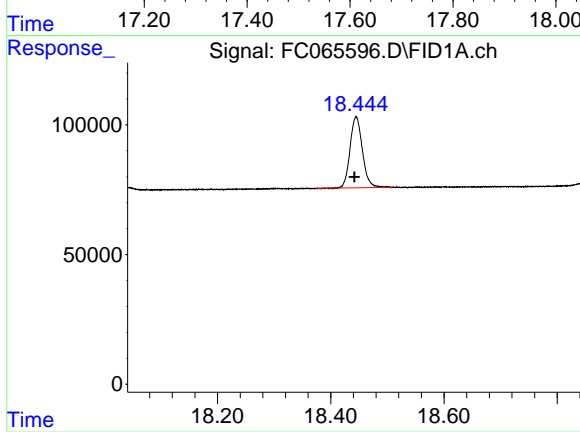
#15 n-Hexacosane (C26)
R.T.: 15.791 min
Delta R.T.: 0.006 min
Response: 402702
Conc: 2.62 ug/ml



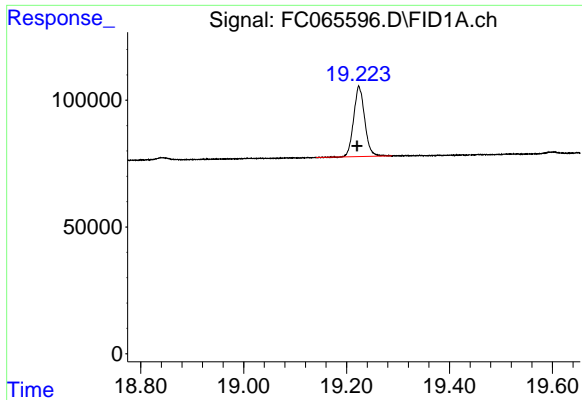
#16 n-Octacosane (C28)
R.T.: 16.735 min
Delta R.T.: 0.006 min
Response: 402954
Conc: 2.67 ug/ml



#17 n-Tricontane (C30)
R.T.: 17.618 min
Delta R.T.: 0.006 min
Response: 413935
Conc: 2.71 ug/ml

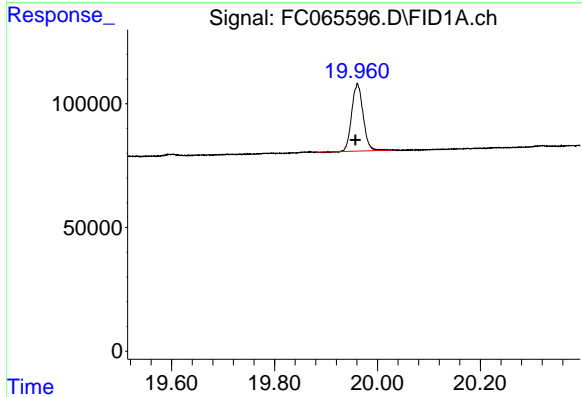


#18 n-Dotriacontane (C32)
R.T.: 18.445 min
Delta R.T.: 0.003 min
Response: 416150
Conc: 2.76 ug/ml



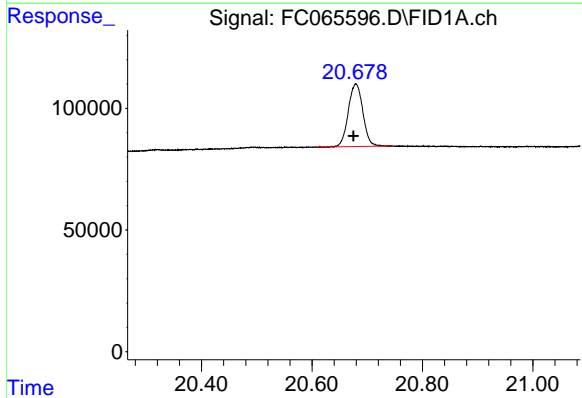
#19 n-Tetratriacontane (C34)

R.T.: 19.224 min
Delta R.T.: 0.004 min
Response: 412194
Conc: 2.87 ug/ml



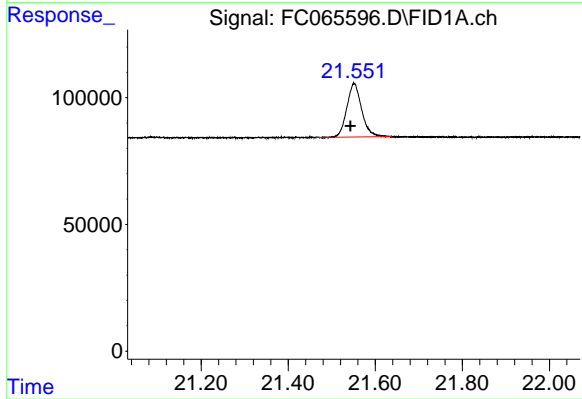
#20 n-Hexatriacontane (C36)

R.T.: 19.961 min
Delta R.T.: 0.004 min
Response: 416712
Conc: 3.02 ug/ml



#21 n-Octatriacontane (C38)

R.T.: 20.679 min
Delta R.T.: 0.004 min
Response: 470665
Conc: 3.40 ug/ml



#22 n-Tetracontane (C40)

R.T.: 21.551 min
Delta R.T.: 0.008 min
Response: 498670
Conc: 3.60 ug/ml