

Data Path : Z:\pestpcbsrv\HPCHEM1\FID_C\Data\FC020521AL\
 Data File : FC051897.D
 Signal(s) : FID1A.CH
 Acq On : 05 Feb 2021 14:17
 Operator : DD\AJ
 Sample : PB134482BL
 Misc :
 ALS Vial : 3 Sample Multiplier: 1

Instrument :
 FID_C
 ClientSampleId :
 PB134482BL

Integration File: autoint1.e
 Quant Time: Feb 05 22:01:45 2021
 Quant Method : Z:\pestpcbsrv\HPCHEM1\FID_C\Method\Alaphatic EPH 011921.M
 Quant Title : GC Extractables
 QLast Update : Wed Jan 20 00:48:48 2021
 Response via : Initial Calibration
 Integrator: ChemStation 6890 Scale Mode: Large solvent peaks clipped

Volume Inj. : 1 ul
 Signal Phase : Rxi-1ms
 Signal Info : 20M x 0.18mm x 0.18um

Compound	R.T.	Response	Conc Units

System Monitoring Compounds			
9) S ortho-Terphenyl (SURR)	11.704	5423897	42.516 ug/ml
Spiked Amount	50.000	Recovery	= 85.03%
12) S 1-chlorooctadecane (S...	13.135	4298595	41.732 ug/ml
Spiked Amount	50.000	Recovery	= 83.46%

Target Compounds

(f)=RT Delta > 1/2 Window

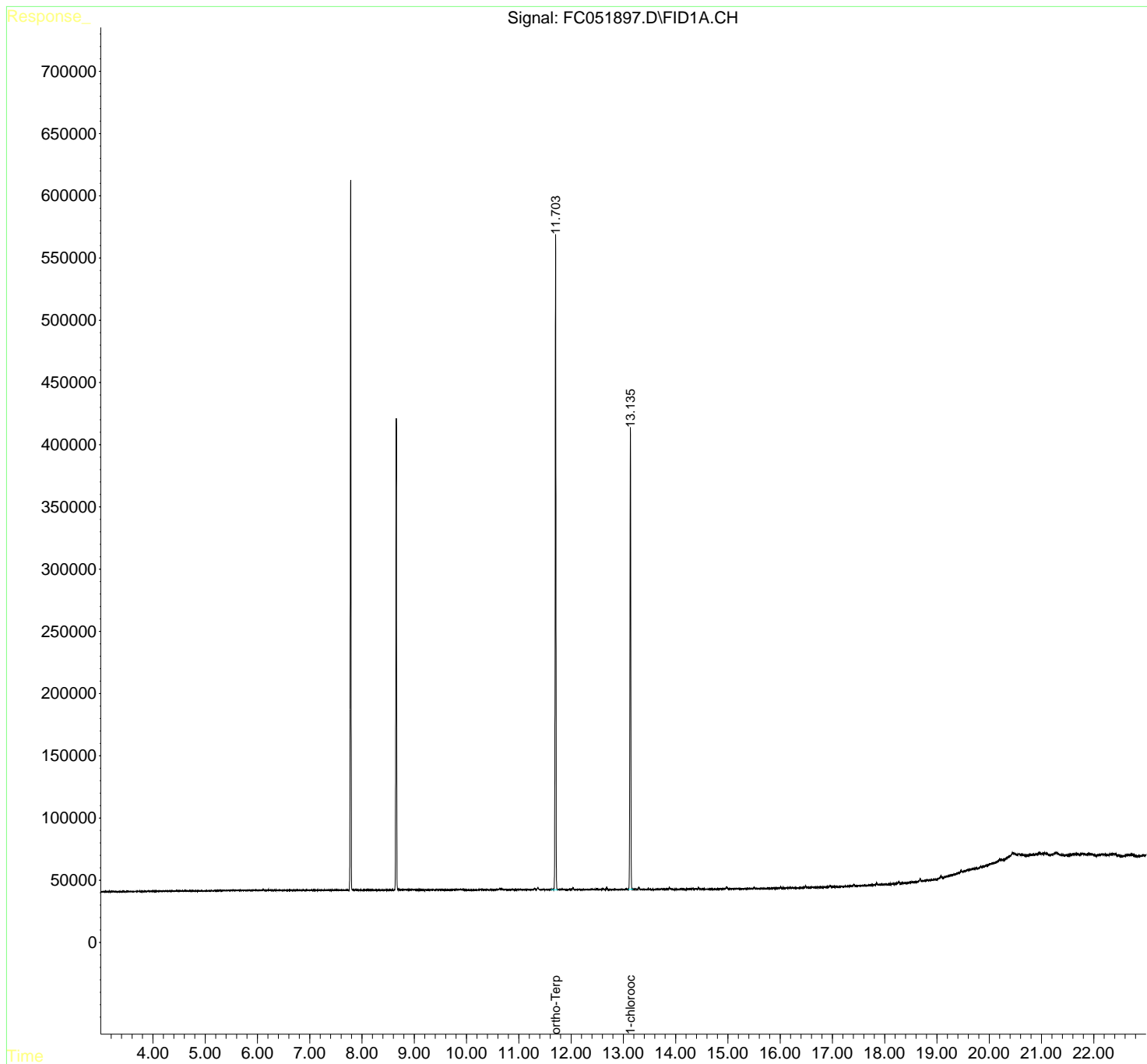
(m)=manual int.

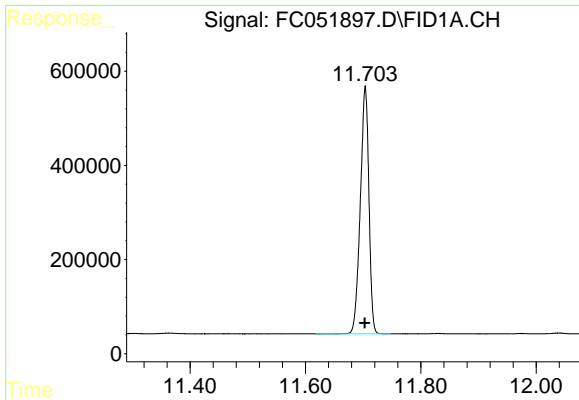
Data Path : Z:\pestpcbsrv\HPCHEM1\FID_C\Data\FC020521AL\
 Data File : FC051897.D
 Signal(s) : FID1A.CH
 Acq On : 05 Feb 2021 14:17
 Operator : DD\AJ
 Sample : PB134482BL
 Misc :
 ALS Vial : 3 Sample Multiplier: 1

Instrument :
 FID_C
 ClientSampleId :
 PB134482BL

Integration File: autoint1.e
 Quant Time: Feb 05 22:01:45 2021
 Quant Method : Z:\pestpcbsrv\HPCHEM1\FID_C\Method\Alaphatic EPH 011921.M
 Quant Title : GC Extractables
 QLast Update : Wed Jan 20 00:48:48 2021
 Response via : Initial Calibration
 Integrator: ChemStation 6890 Scale Mode: Large solvent peaks clipped

Volume Inj. : 1 ul
 Signal Phase : Rxi-1ms
 Signal Info : 20M x 0.18mm x 0.18um

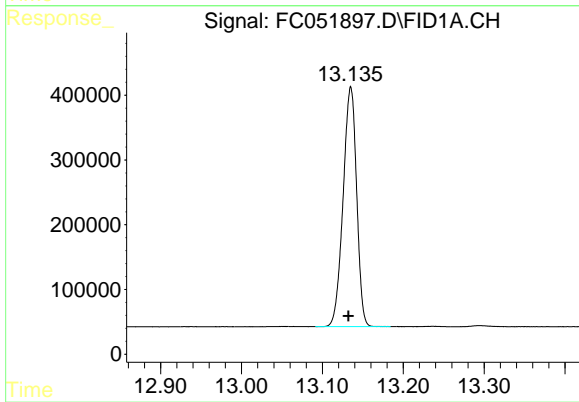




#9 ortho-Terphenyl (SURR)

R.T.: 11.704 min
Delta R.T.: 0.000 min
Response: 5423897
Conc: 42.52 ug/ml

Instrument :
FID_C
ClientSampleId :
PB134482BL



#12 1-chlorooctadecane (SURR)

R.T.: 13.135 min
Delta R.T.: 0.003 min
Response: 4298595
Conc: 41.73 ug/ml