

Data Path : X:\pestpcbsrv\HPCHEM1\FID_C\Data\FC020619AL\
Data File : FC038995.D
Signal(s) : FID1A.CH
Acq On : 06 Feb 2019 11:18
Operator : AJ\SJ
Sample : I.BLK
Misc :
ALS Vial : 1 Sample Multiplier: 1

Instrument :
FID_C
ClientSampleId :
I.BLK

Integration File: autoint1.e
Quant Time: Feb 07 03:13:34 2019
Quant Method : Z:\pestpcbsrv\HPCHEM1\FID_C\Method\Alaphatic EPH 020619.M
Quant Title : GC Extractables
QLast Update : Thu Feb 07 03:09:34 2019
Response via : Initial Calibration
Integrator: ChemStation 6890 Scale Mode: Large solvent peaks clipped

Volume Inj. : 1 ul
Signal Phase : Rxi-1ms
Signal Info : 20M x 0.18mm x 0.18um

Compound	R.T.	Response	Conc Units
----------	------	----------	------------

System Monitoring Compounds

Target Compounds

(f)=RT Delta > 1/2 Window

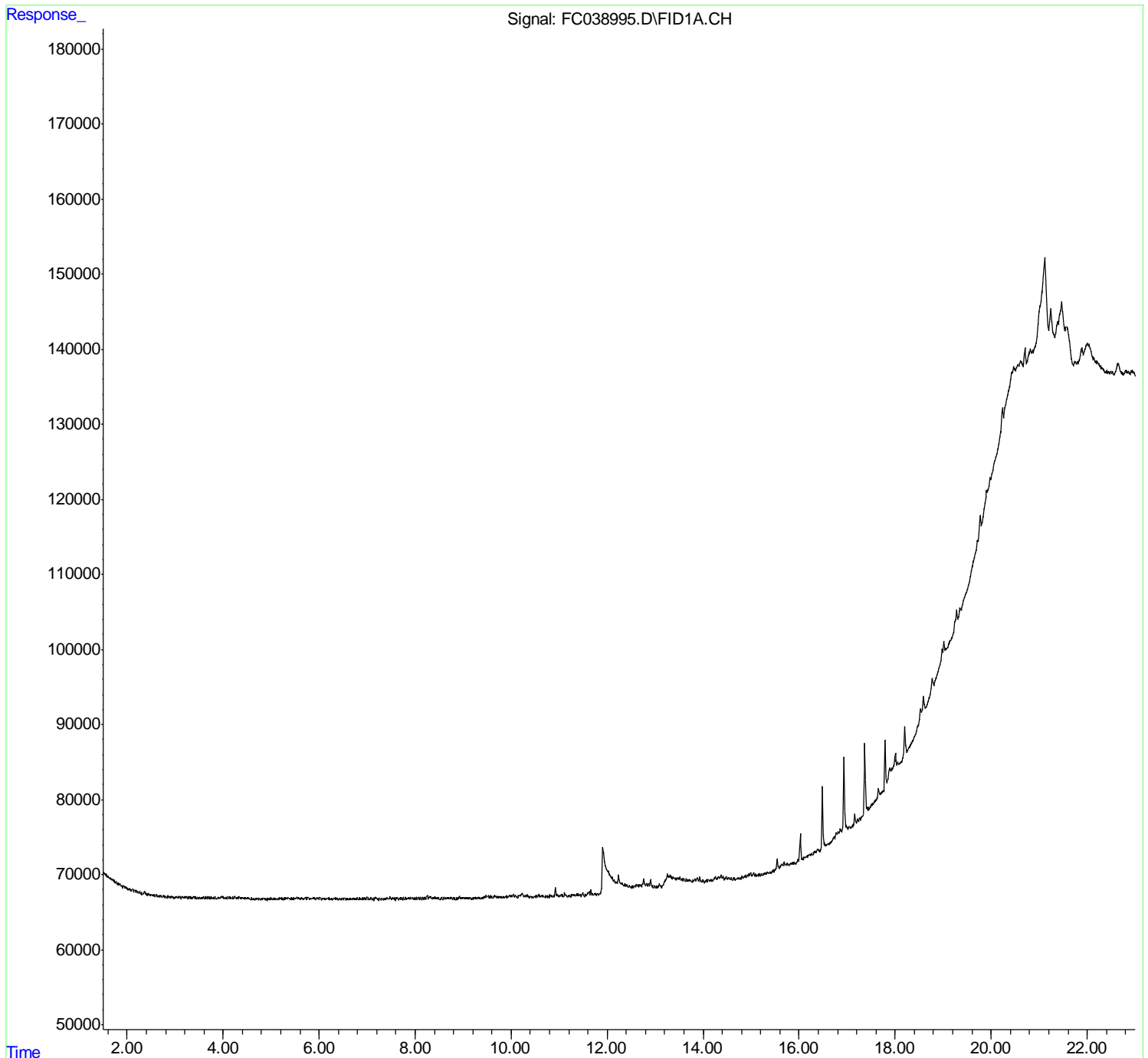
(m)=manual int.

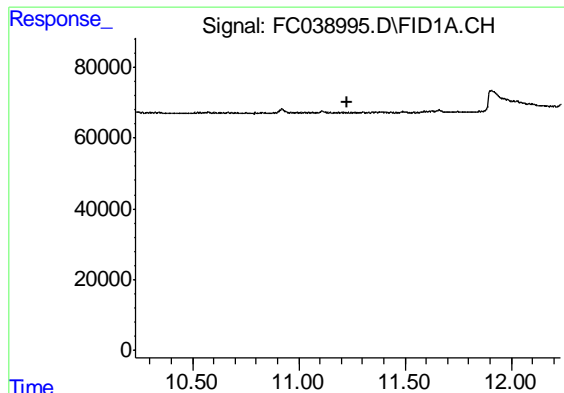
Data Path : X:\pestpcbsrv\HPCHEM1\FID_C\Data\FC020619AL\
 Data File : FC038995.D
 Signal(s) : FID1A.CH
 Acq On : 06 Feb 2019 11:18
 Operator : AJ\SJ
 Sample : I.BLK
 Misc :
 ALS Vial : 1 Sample Multiplier: 1

Instrument :
 FID_C
 ClientSampled :
 I.BLK

Integration File: autoint1.e
 Quant Time: Feb 07 03:13:34 2019
 Quant Method : Z:\pestpcbsrv\HPCHEM1\FID_C\Method\Alaphatic EPH 020619.M
 Quant Title : GC Extractables
 QLast Update : Thu Feb 07 03:09:34 2019
 Response via : Initial Calibration
 Integrator: ChemStation 6890 Scale Mode: Large solvent peaks clipped

Volume Inj. : 1 ul
 Signal Phase : Rxi-1ms
 Signal Info : 20M x 0.18mm x 0.18um

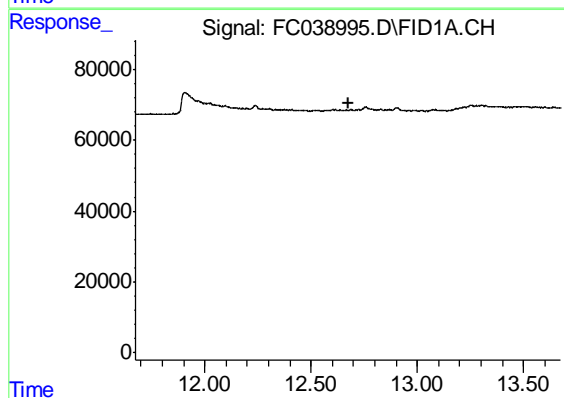




#9 ortho-Terphenyl (SURR)

R.T.: 0.000 min
Exp R.T. : 11.231 min
Response: 0
Conc: N.D.

Instrument :
FID_C
ClientSampleId :
I.BLK



#12 1-chlorooctadecane (SURR)

R.T.: 0.000 min
Exp R.T. : 12.674 min
Response: 0
Conc: N.D.