

Data Path : X:\pestpcbsrv\HPCHEM1\FID_C\Data\FC020719AL\
Data File : FC039025.D
Signal(s) : FID1A.CH
Acq On : 08 Feb 2019 00:23
Operator : AJ\SJ
Sample : K1401-01
Misc :
ALS Vial : 17 Sample Multiplier: 1

Integration File: autoint1.e
Quant Time: Feb 08 08:23:21 2019
Quant Method : Z:\pestpcbsrv\HPCHEM1\FID_C\Method\Alaphatic EPH 020619.M
Quant Title : GC Extractables
QLast Update : Thu Feb 07 03:09:34 2019
Response via : Initial Calibration
Integrator: ChemStation 6890 Scale Mode: Large solvent peaks clipped

Volume Inj. : 1 ul
Signal Phase : Rxi-1ms
Signal Info : 20M x 0.18mm x 0.18um

Compound	R.T.	Response	Conc Units

System Monitoring Compounds			
12) S 1-chlorooctadecane (S...	12.673	4391754	37.246 ug/ml
Spiked Amount	50.000	Recovery	= 74.49%

Target Compounds

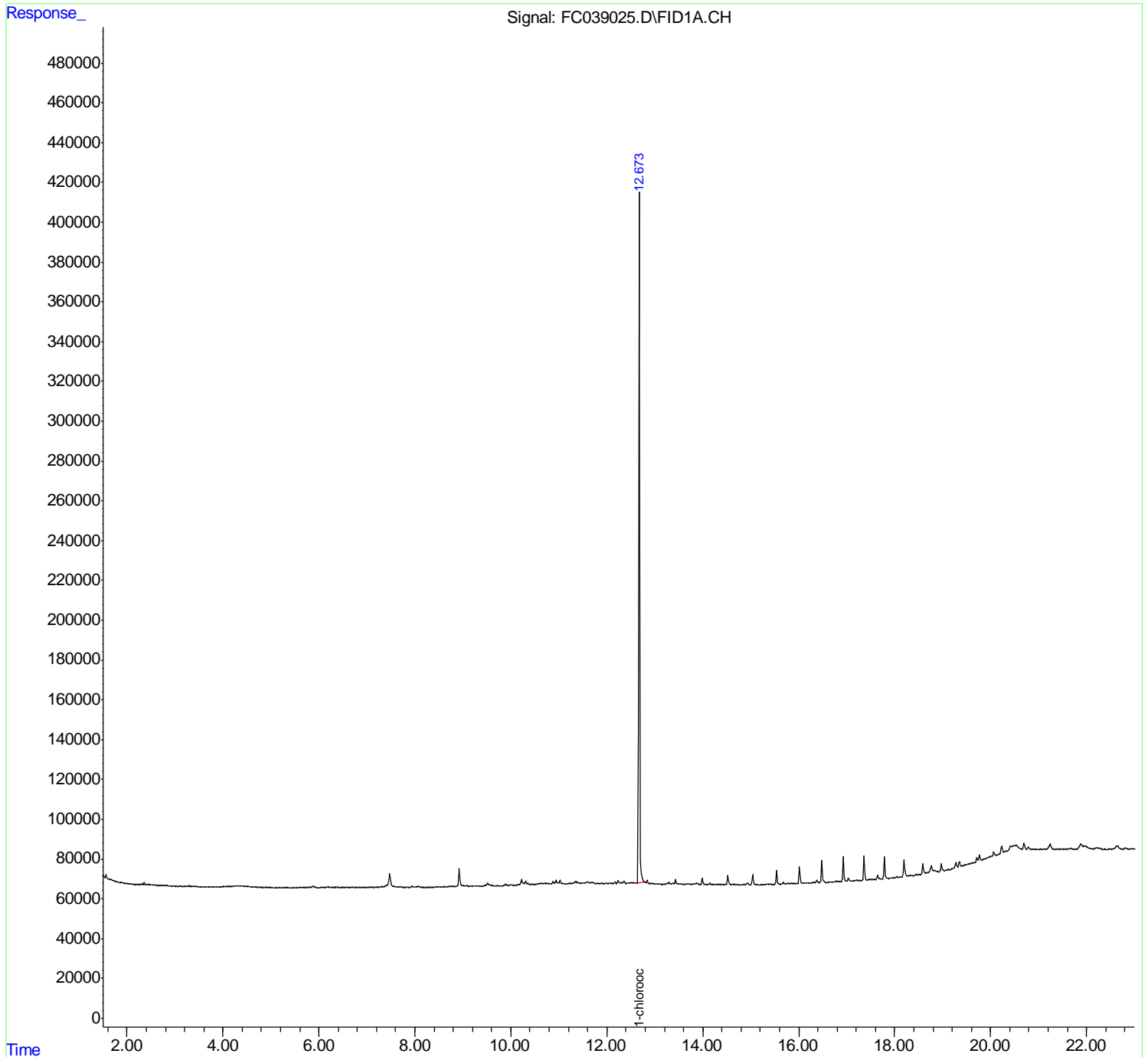
(f)=RT Delta > 1/2 Window

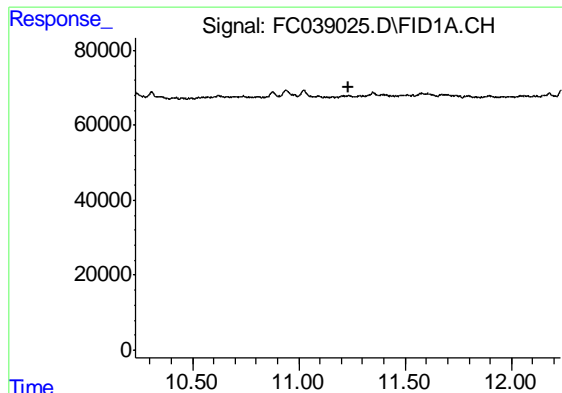
(m)=manual int.

Data Path : X:\pestpcbsrv\HPCHEM1\FID_C\Data\FC020719AL\
Data File : FC039025.D
Signal(s) : FID1A.CH
Acq On : 08 Feb 2019 00:23
Operator : AJ\SJ
Sample : K1401-01
Misc :
ALS Vial : 17 Sample Multiplier: 1

Integration File: autoint1.e
Quant Time: Feb 08 08:23:21 2019
Quant Method : Z:\pestpcbsrv\HPCHEM1\FID_C\Method\Aliphatic EPH 020619.M
Quant Title : GC Extractables
QLast Update : Thu Feb 07 03:09:34 2019
Response via : Initial Calibration
Integrator: ChemStation 6890 Scale Mode: Large solvent peaks clipped

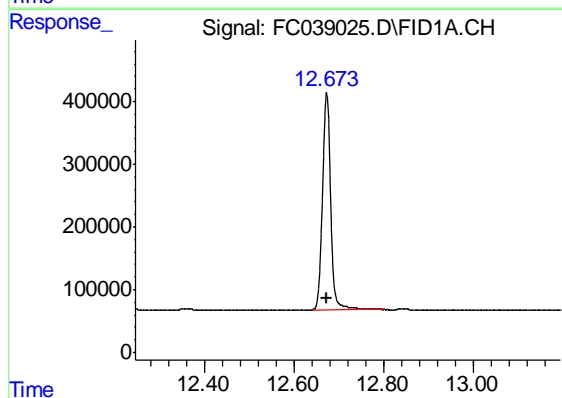
Volume Inj. : 1 ul
Signal Phase : Rxi-1ms
Signal Info : 20M x 0.18mm x 0.18um





#9 ortho-Terphenyl (SURR)

R.T.: 0.000 min
Exp R.T. : 11.231 min
Response: 0
Conc: N.D.



#12 1-chlorooctadecane (SURR)

R.T.: 12.673 min
Delta R.T.: 0.000 min
Response: 4391754
Conc: 37.25 ug/ml