

Data Path : Z:\pestpcbsrv\HPCHEM1\FID_C\Data\FC020823AL\
Data File : FC062897.D
Signal(s) : FID1A.ch
Acq On : 08 Feb 2023 14:12
Operator : YP/AJ
Sample : 01462-24
Misc :
ALS Vial : 3 Sample Multiplier: 1

Integration File: autoint1.e
Quant Time: Feb 09 03:01:10 2023
Quant Method : Z:\pestpcbsrv\HPCHEM1\FID_C\Method\Aliphatic EPH 012623.M
Quant Title : GC Extractables
QLast Update : Fri Jan 27 04:11:29 2023
Response via : Initial Calibration
Integrator: ChemStation

Volume Inj. : 1 ul
Signal Phase : Rxi-1ms
Signal Info : 20M x 0.18mm x 0.18um

Compound	R.T.	Response	Conc Units

System Monitoring Compounds			
12) S 1-chlorooctadecane (S...	12.981	3581153	37.969 ug/ml
Spiked Amount	50.000	Recovery	= 75.94%

Target Compounds

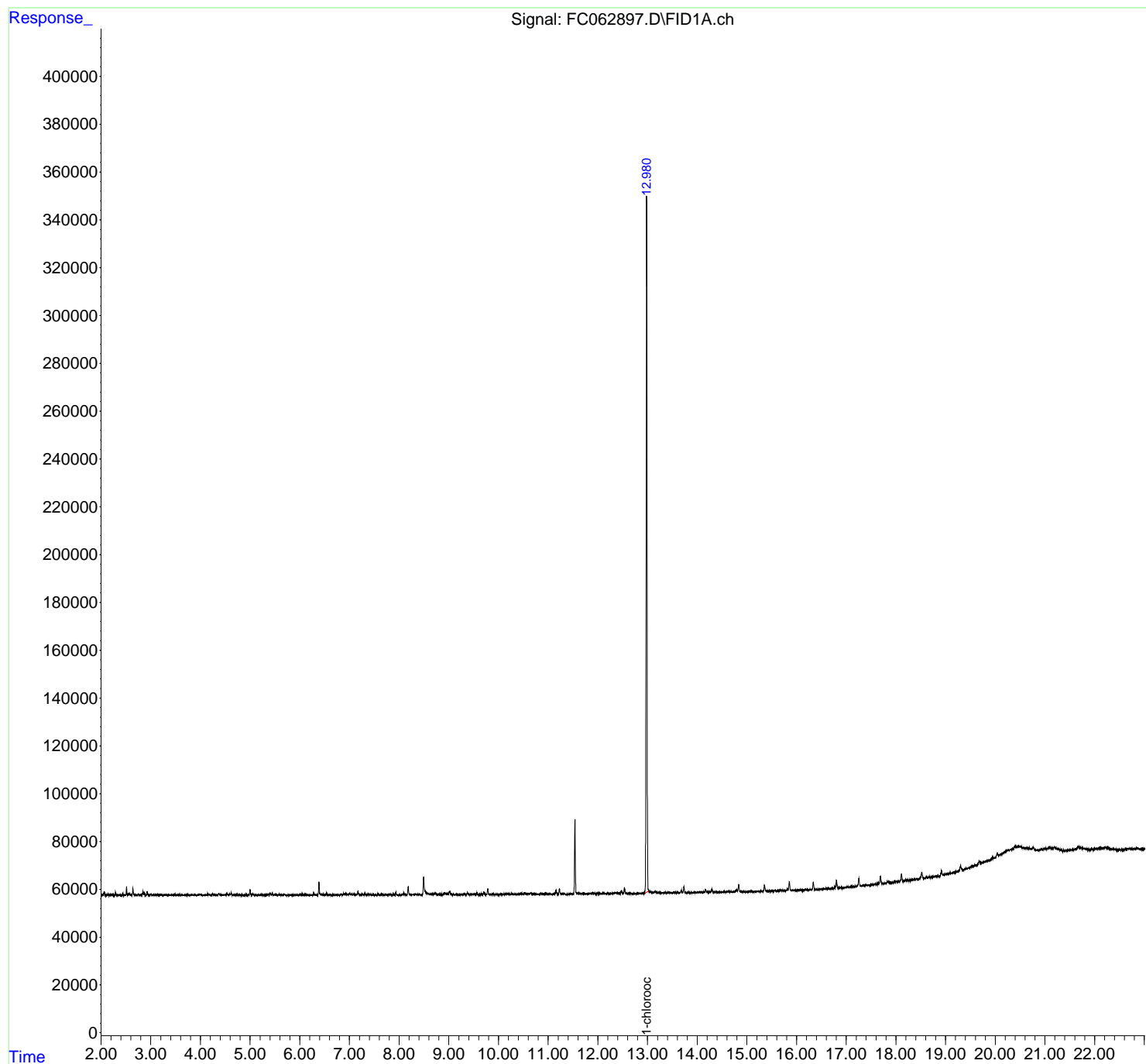
(f)=RT Delta > 1/2 Window

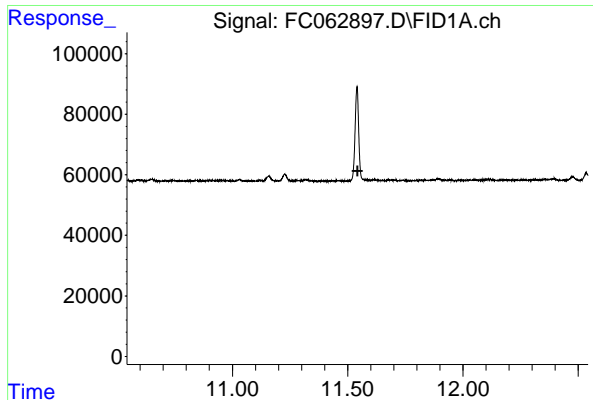
(m)=manual int.

Data Path : Z:\pestpcbsrv\HPCHEM1\FID_C\Data\FC020823AL\
Data File : FC062897.D
Signal(s) : FID1A.ch
Acq On : 08 Feb 2023 14:12
Operator : YP/AJ
Sample : 01462-24
Misc :
ALS Vial : 3 Sample Multiplier: 1

Integration File: autoint1.e
Quant Time: Feb 09 03:01:10 2023
Quant Method : Z:\pestpcbsrv\HPCHEM1\FID_C\Method\Aliphatic EPH 012623.M
Quant Title : GC Extractables
QLast Update : Fri Jan 27 04:11:29 2023
Response via : Initial Calibration
Integrator: ChemStation

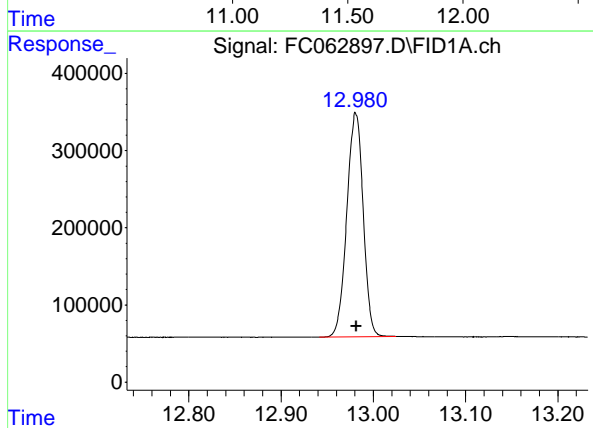
Volume Inj. : 1 ul
Signal Phase : Rxi-1ms
Signal Info : 20M x 0.18mm x 0.18um





#9 ortho-Terphenyl (SURR)

R.T.: 0.000 min
Exp R.T. : 11.543 min
Response: 0
Conc: N.D.



#12 1-chlorooctadecane (SURR)

R.T.: 12.981 min
Delta R.T.: 0.000 min
Response: 3581153
Conc: 37.97 ug/ml