

Data Path : Z:\pestpcbsrv\HPCHEM1\FID\_C\Data\FC020823AL\  
 Data File : FC062901.D  
 Signal(s) : FID1A.ch  
 Acq On : 08 Feb 2023 17:12  
 Operator : YP/AJ  
 Sample : 01463-14  
 Misc :  
 ALS Vial : 7 Sample Multiplier: 1

Integration File: autoint1.e  
 Quant Time: Feb 09 03:01:32 2023  
 Quant Method : Z:\pestpcbsrv\HPCHEM1\FID\_C\Method\Aliphatic EPH 012623.M  
 Quant Title : GC Extractables  
 QLast Update : Fri Jan 27 04:11:29 2023  
 Response via : Initial Calibration  
 Integrator: ChemStation

Volume Inj. : 1 ul  
 Signal Phase : Rxi-1ms  
 Signal Info : 20M x 0.18mm x 0.18um

Compound	R.T.	Response	Conc Units
-----			
System Monitoring Compounds			
12) S 1-chlorooctadecane (S...	12.981	3697544	39.203 ug/ml
Spiked Amount	50.000	Recovery	= 78.41%

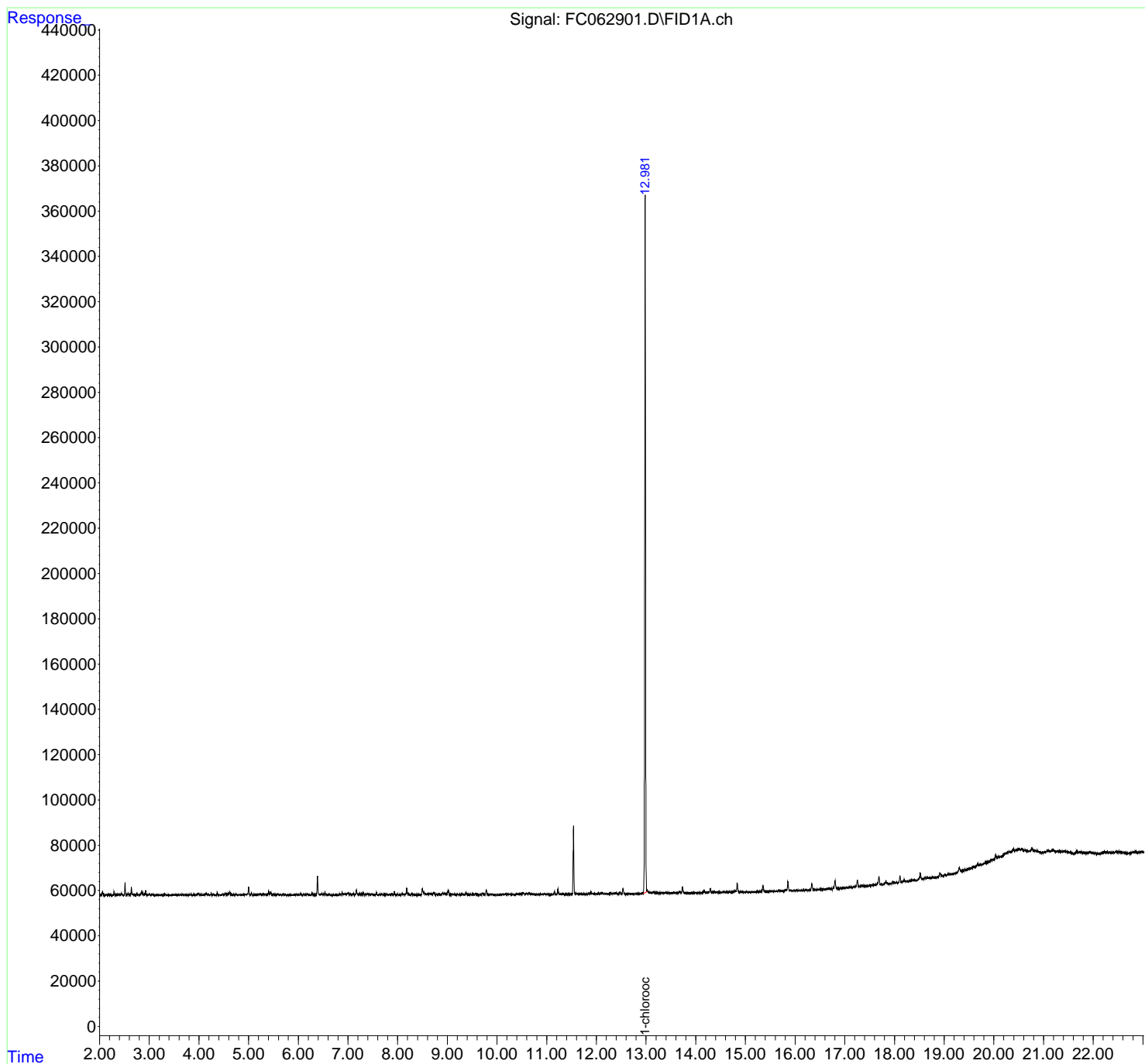
Target Compounds

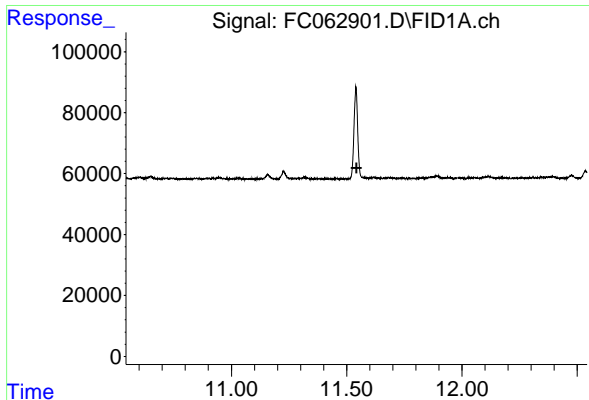
(f)=RT Delta > 1/2 Window (m)=manual int.

Data Path : Z:\pestpcbsrv\HPCHEM1\FID\_C\Data\FC020823AL\  
Data File : FC062901.D  
Signal(s) : FID1A.ch  
Acq On : 08 Feb 2023 17:12  
Operator : YP/AJ  
Sample : 01463-14  
Misc :  
ALS Vial : 7 Sample Multiplier: 1

Integration File: autoint1.e  
Quant Time: Feb 09 03:01:32 2023  
Quant Method : Z:\pestpcbsrv\HPCHEM1\FID\_C\Method\Aliphatic EPH 012623.M  
Quant Title : GC Extractables  
QLast Update : Fri Jan 27 04:11:29 2023  
Response via : Initial Calibration  
Integrator: ChemStation

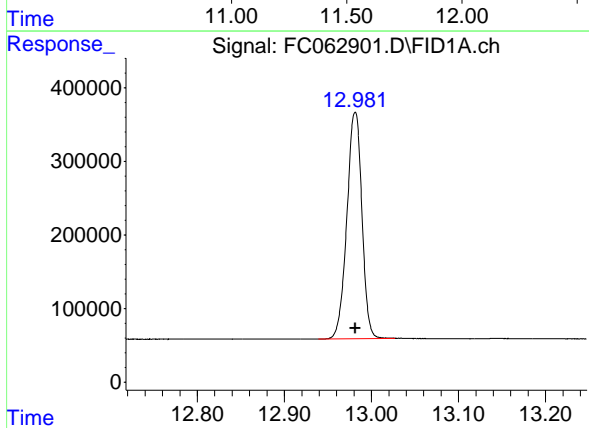
Volume Inj. : 1 ul  
Signal Phase : Rxi-1ms  
Signal Info : 20M x 0.18mm x 0.18um





#9 ortho-Terphenyl (SURR)

R.T.: 0.000 min  
Exp R.T. : 11.543 min  
Response: 0  
Conc: N.D.



#12 1-chlorooctadecane (SURR)

R.T.: 12.981 min  
Delta R.T.: 0.000 min  
Response: 3697544  
Conc: 39.20 ug/ml