

Data Path : Z:\pestpcbsrv\HPCHEM1\FID\_C\Data\FC020924AL\  
 Data File : FC065689.D  
 Signal(s) : FID1A.ch  
 Acq On : 09 Feb 2024 10:00  
 Operator : YP/AJ  
 Sample : I.BLK  
 Misc :  
 ALS Vial : 1 Sample Multiplier: 1

Integration File: autoint1.e  
 Quant Time: Feb 10 02:47:27 2024  
 Quant Method : Z:\pestpcbsrv\HPCHEM1\FID\_C\Method\Aliphatic EPH 020824.M  
 Quant Title : GC Extractables  
 QLast Update : Thu Feb 08 13:26:08 2024  
 Response via : Initial Calibration  
 Integrator: ChemStation

Volume Inj. : 1 ul  
 Signal Phase : Rxi-1ms  
 Signal Info : 20M x 0.18mm x 0.18um

Compound	R.T.	Response	Conc Units
-----			
System Monitoring Compounds			
Target Compounds			
-----			

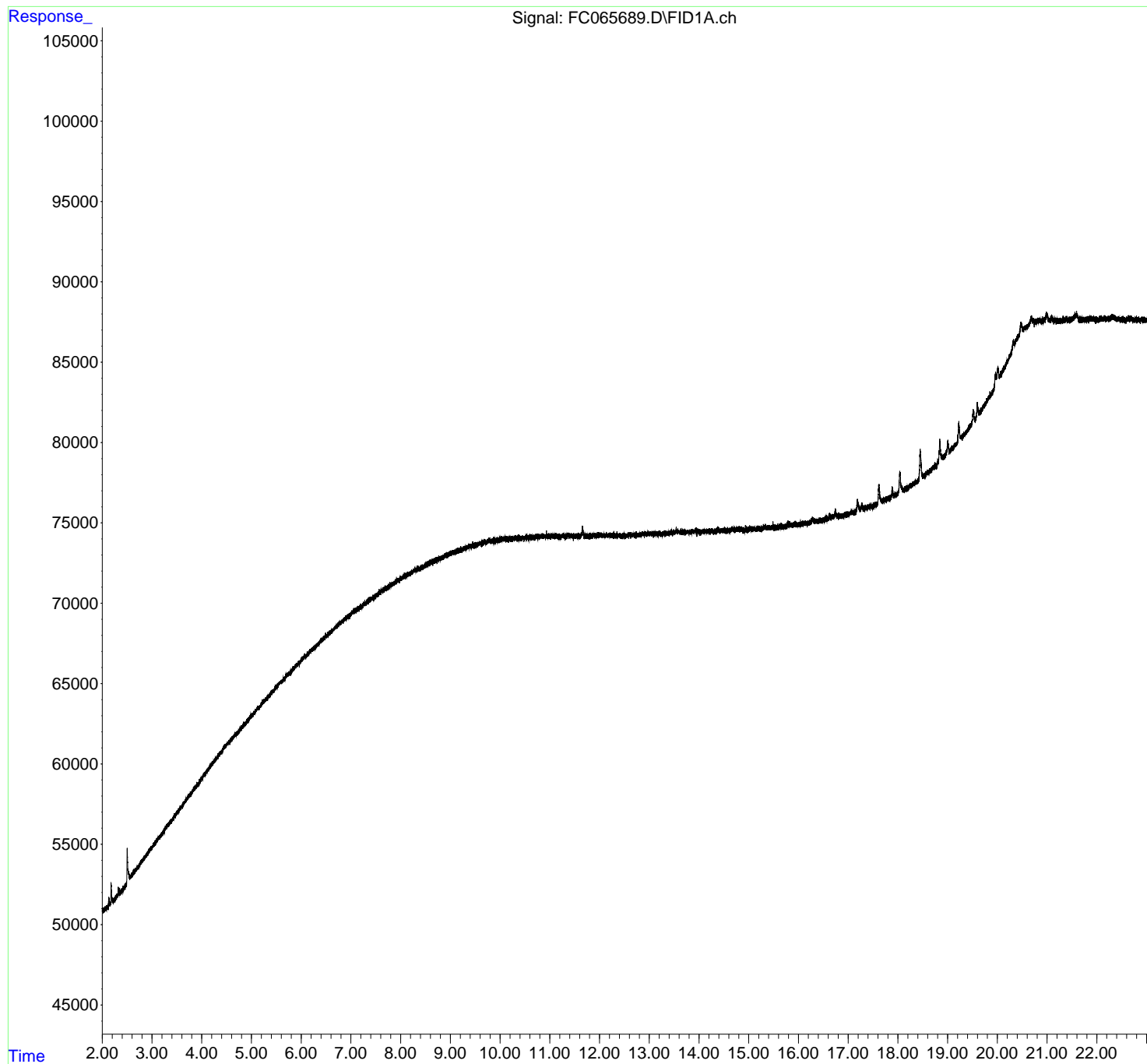
(f)=RT Delta > 1/2 Window

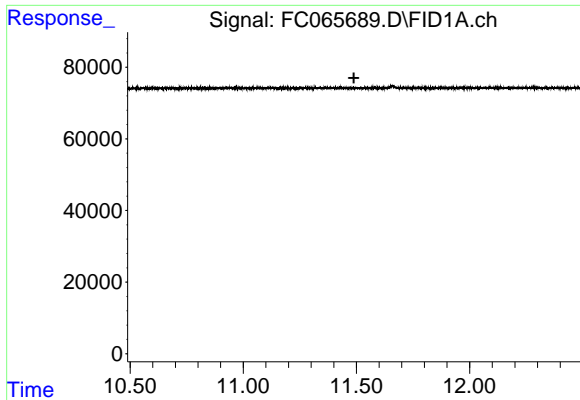
(m)=manual int.

Data Path : Z:\pestpcbsrv\HPCHEM1\FID\_C\Data\FC020924AL\  
Data File : FC065689.D  
Signal(s) : FID1A.ch  
Acq On : 09 Feb 2024 10:00  
Operator : YP/AJ  
Sample : I.BLK  
Misc :  
ALS Vial : 1 Sample Multiplier: 1

Integration File: autoint1.e  
Quant Time: Feb 10 02:47:27 2024  
Quant Method : Z:\pestpcbsrv\HPCHEM1\FID\_C\Method\Aliphatic EPH 020824.M  
Quant Title : GC Extractables  
QLast Update : Thu Feb 08 13:26:08 2024  
Response via : Initial Calibration  
Integrator: ChemStation

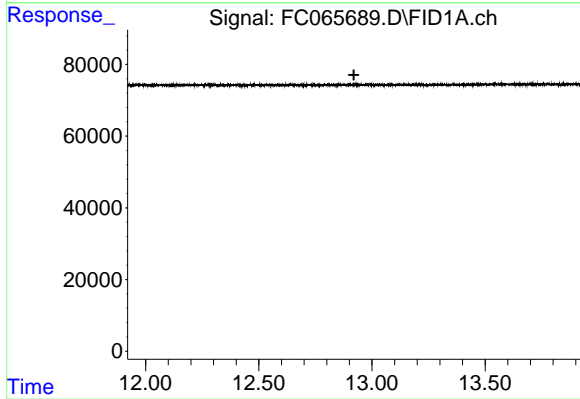
Volume Inj. : 1 ul  
Signal Phase : Rxi-1ms  
Signal Info : 20M x 0.18mm x 0.18um





#9 ortho-Terphenyl (SURR)

R.T.: 0.000 min  
Exp R.T. : 11.489 min  
Response: 0  
Conc: N.D.



#12 1-chlorooctadecane (SURR)

R.T.: 0.000 min  
Exp R.T. : 12.920 min  
Response: 0  
Conc: N.D.