

Data Path : Z:\pestpcbsrv\HPCHEM1\FID_C\Data\FC021025AL\
 Data File : FC068244.D
 Signal(s) : FID1A.ch
 Acq On : 10 Feb 2025 10:55
 Operator : YP/AJ
 Sample : Q1308-12DL 10X
 Misc :
 ALS Vial : 11 Sample Multiplier: 1

Instrument :
 FID_C
ClientSampleId :
 EX-11-TPH-13DL

Manual Integrations
APPROVED
 Reviewed By :Yogesh Patel 02/11/2025
 Supervised By :Ankita Jodhani 02/11/2025

Integration File: autoint1.e
 Quant Time: Feb 10 23:15:27 2025
 Quant Method : Z:\pestpcbsrv\HPCHEM1\FID_C\Method\Aliphatic EPH 012425.M
 Quant Title : GC Extractables
 QLast Update : Sat Jan 25 04:31:18 2025
 Response via : Initial Calibration
 Integrator: ChemStation

Volume Inj. : 1 ul
 Signal Phase : Rxi-1ms
 Signal Info : 20M x 0.18mm x 0.18um

Compound	R.T.	Response	Conc Units

System Monitoring Compounds			
12) S 1-chlorooctadecane (S...	12.841	814082	7.079 ug/mlm
Spiked Amount	50.000	Recovery =	14.16%
Target Compounds			

(f)=RT Delta > 1/2 Window

(m)=manual int.

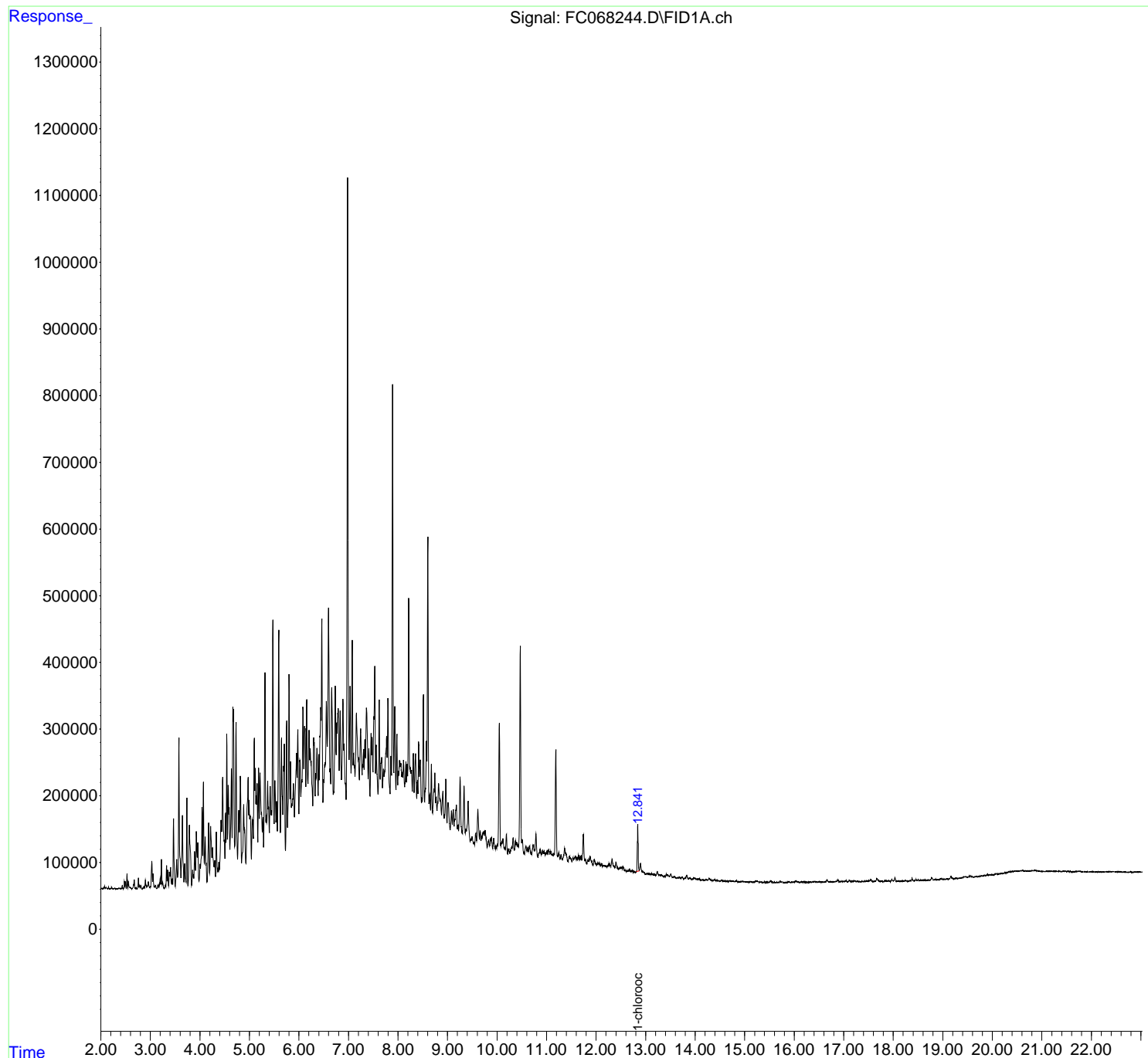
Data Path : Z:\pestpcbsrv\HPCHEM1\FID_C\Data\FC021025AL\
Data File : FC068244.D
Signal(s) : FID1A.ch
Acq On : 10 Feb 2025 10:55
Operator : YP/AJ
Sample : Q1308-12DL 10X
Misc :
ALS Vial : 11 Sample Multiplier: 1

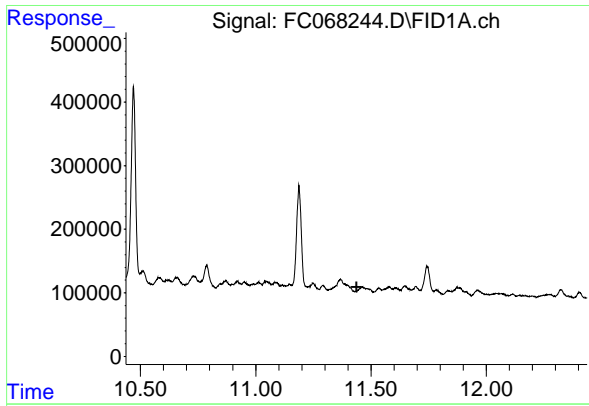
Instrument :
FID_C
ClientSampleId :
EX-11-TPH-13DL

Manual Integrations
APPROVED
Reviewed By :Yogesh Patel 02/11/2025
Supervised By :Ankita Jodhani 02/11/2025

Integration File: autoint1.e
Quant Time: Feb 10 23:15:27 2025
Quant Method : Z:\pestpcbsrv\HPCHEM1\FID_C\Method\Aliphatic EPH 012425.M
Quant Title : GC Extractables
QLast Update : Sat Jan 25 04:31:18 2025
Response via : Initial Calibration
Integrator: ChemStation

Volume Inj. : 1 ul
Signal Phase : Rxi-1ms
Signal Info : 20M x 0.18mm x 0.18um





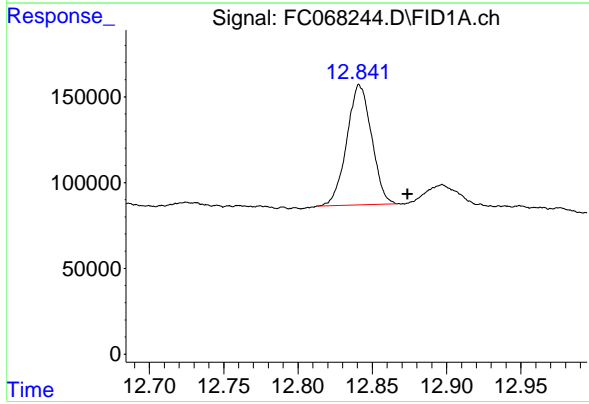
#9 ortho-Terphenyl (SURRE)

R.T.: 0.000 min
 Exp R.T.: 11.437 min
 Response: 0
 Conc: N.D.

Instrument : FID_C
 ClientSampleId : EX-11-TPH-13DL

Manual Integrations
 APPROVED

Reviewed By :Yogesh Patel 02/11/2025
 Supervised By :Ankita Jodhani 02/11/2025



#12 1-chlorooctadecane (SURRE)

R.T.: 12.841 min
 Delta R.T.: -0.033 min
 Response: 814082
 Conc: 7.08 ug/ml m