

Data Path : Z:\pestpcbsrv\HPCHEM1\FID_C\Data\FC021319AL\
 Data File : FC039155.D
 Signal(s) : FID1A.CH
 Acq On : 14 Feb 2019 1:23
 Operator : AJ\SJ
 Sample : K1343-21DL 5X
 Misc :
 ALS Vial : 23 Sample Multiplier: 1

Instrument :
 FID_C
 ClientSampleId :
 JC-02-021119-KDL

Integration File: autoint1.e
 Quant Time: Feb 14 03:05:34 2019
 Quant Method : Z:\pestpcbsrv\HPCHEM1\FID_C\Method\Alaphatic EPH 020619.M
 Quant Title : GC Extractables
 QLast Update : Thu Feb 07 03:09:34 2019
 Response via : Initial Calibration
 Integrator: ChemStation 6890 Scale Mode: Large solvent peaks clipped

Volume Inj. : 1 ul
 Signal Phase : Rxi-1ms
 Signal Info : 20M x 0.18mm x 0.18um

Compound	R.T.	Response	Conc Units

System Monitoring Compounds			
9) S ortho-Terphenyl (SURR)	11.223	925366	5.919 ug/ml
Spiked Amount	50.000	Recovery	= 11.84%
12) S 1-chlorooctadecane (S...	12.656	4401934	37.332 ug/ml
Spiked Amount	50.000	Recovery	= 74.66%
Target Compounds			
4) T n-Dodecane (C12)	6.132	88048	0.833 ug/ml
6) T n-Tetradecane (C14)	7.909	167155	1.535 ug/ml
7) T n-Hexadecane (C16)	9.497	209629	1.864 ug/ml
8) T n-Octadecane (C18)	10.928	171324	1.463 ug/ml
10) T n-Eicosane (C20)	12.230	121229	1.018 ug/ml
11) T n-Heneicosane (C21)	12.838	99138	0.842 ug/ml
13) T n-Docosane (C22)	13.421	82918	0.703 ug/ml
14) T n-Tetracosane (C24)	14.516	102291	0.867 ug/ml
15) T n-Hexacosane (C26)	15.531	100959	0.868 ug/ml
16) T n-Octacosane (C28)	16.477	140342	1.204 ug/ml
17) T n-Tricontane (C30)	17.361	128234	1.105 ug/ml
18) T n-Dotriacontane (C32)	18.190	120944	1.112 ug/ml
19) T n-Tetratriacontane (C34)	18.968	120179	1.298 ug/ml
20) T n-Hexatriacontane (C36)	19.648f	30286	0.381 ug/ml

(f)=RT Delta > 1/2 Window

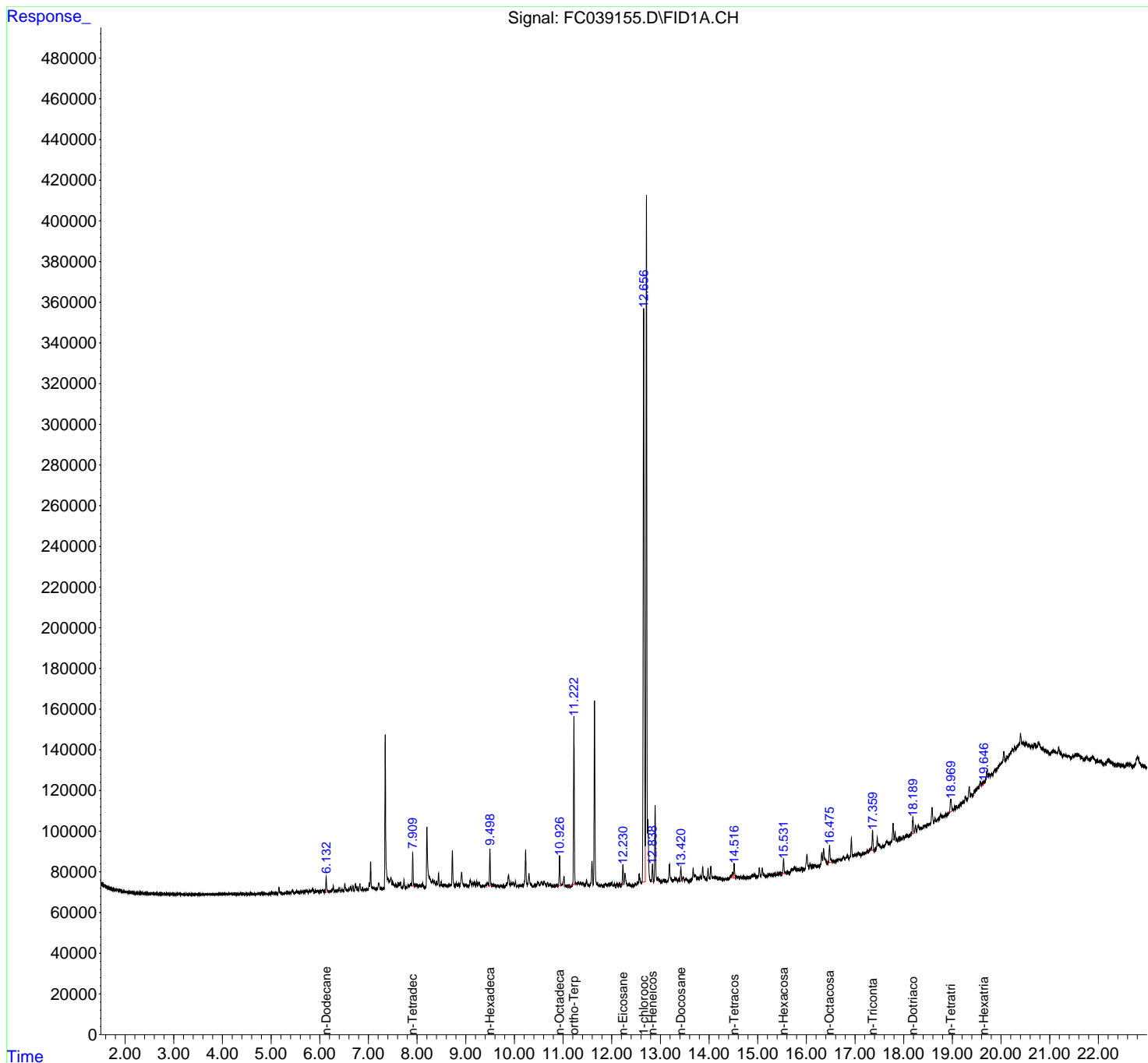
(m)=manual int.

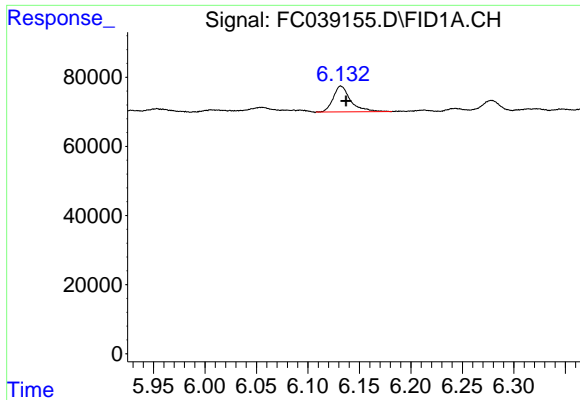
Data Path : Z:\pestpcbsrv\HPCHEM1\FID_C\Data\FC021319AL\
 Data File : FC039155.D
 Signal(s) : FID1A.CH
 Acq On : 14 Feb 2019 1:23
 Operator : AJ\SJ
 Sample : K1343-21DL 5X
 Misc :
 ALS Vial : 23 Sample Multiplier: 1

Instrument :
 FID_C
 ClientSampled :
 JC-02-021119-KDL

Integration File: autoint1.e
 Quant Time: Feb 14 03:05:34 2019
 Quant Method : Z:\pestpcbsrv\HPCHEM1\FID_C\Method\Aliphatic EPH 020619.M
 Quant Title : GC Extractables
 QLast Update : Thu Feb 07 03:09:34 2019
 Response via : Initial Calibration
 Integrator: ChemStation 6890 Scale Mode: Large solvent peaks clipped

Volume Inj. : 1 ul
 Signal Phase : Rxi-1ms
 Signal Info : 20M x 0.18mm x 0.18um

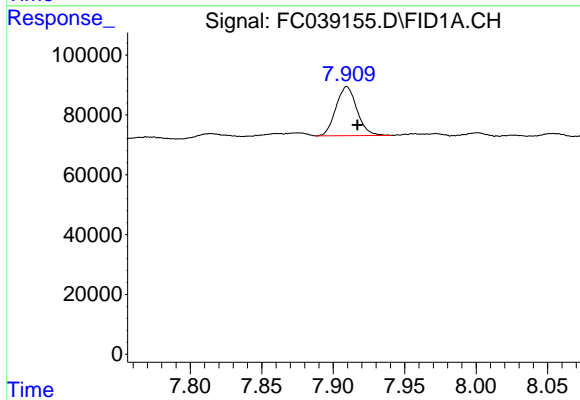




#4 n-Dodecane (C12)

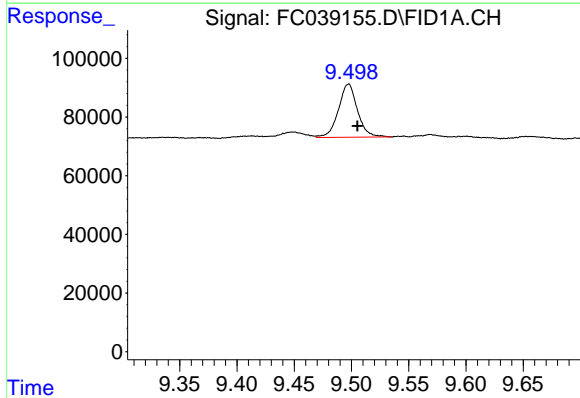
R.T.: 6.132 min
Delta R.T.: -0.005 min
Response: 88048
Conc: 0.83 ug/ml

Instrument :
FID_C
ClientSampleId :
JC-02-021119-KDL



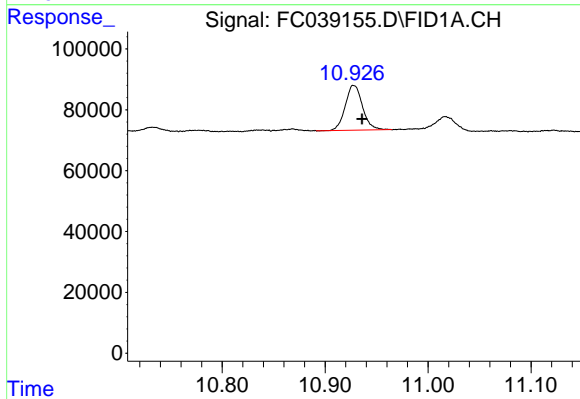
#6 n-Tetradecane (C14)

R.T.: 7.909 min
Delta R.T.: -0.008 min
Response: 167155
Conc: 1.54 ug/ml



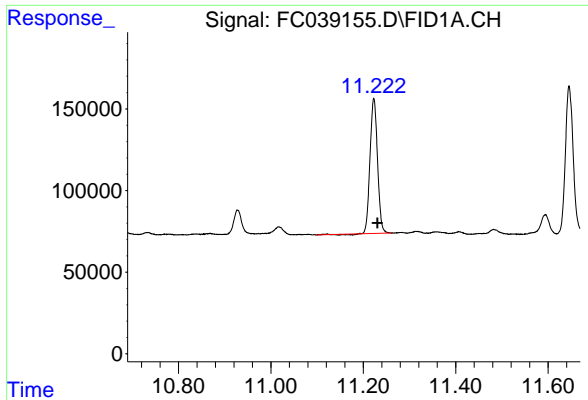
#7 n-Hexadecane (C16)

R.T.: 9.497 min
Delta R.T.: -0.008 min
Response: 209629
Conc: 1.86 ug/ml



#8 n-Octadecane (C18)

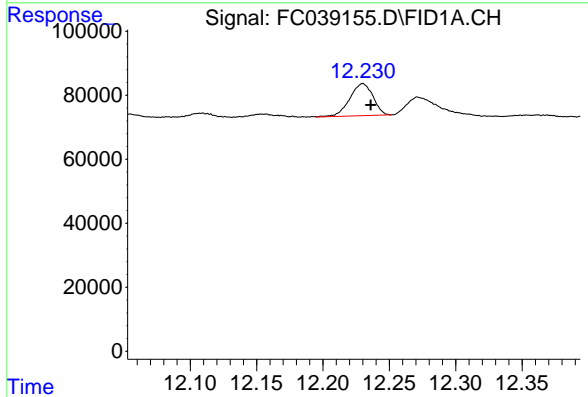
R.T.: 10.928 min
Delta R.T.: -0.008 min
Response: 171324
Conc: 1.46 ug/ml



#9 ortho-Terphenyl (SURR)

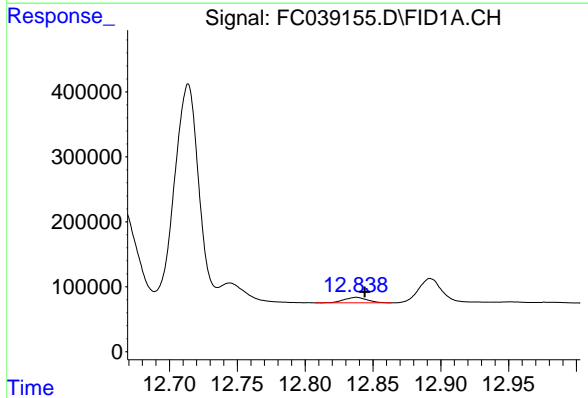
R.T.: 11.223 min
 Delta R.T.: -0.008 min
 Response: 925366
 Conc: 5.92 ug/ml

Instrument :
 FID_C
 ClientSampleId :
 JC-02-021119-KDL



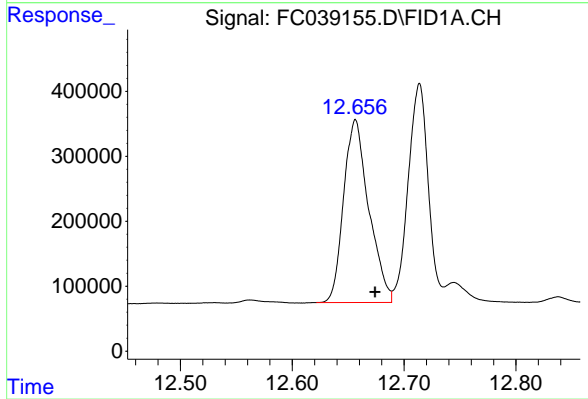
#10 n-Eicosane (C20)

R.T.: 12.230 min
 Delta R.T.: -0.006 min
 Response: 121229
 Conc: 1.02 ug/ml



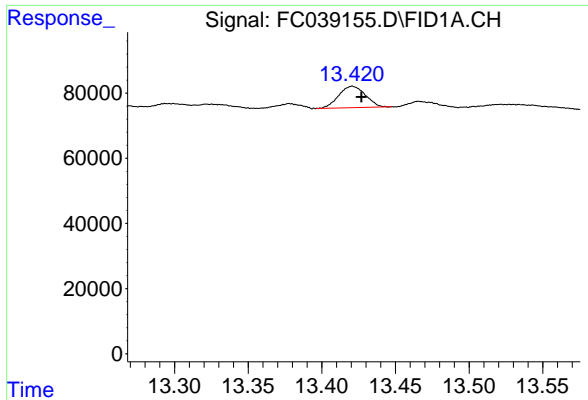
#11 n-Heneicosane (C21)

R.T.: 12.838 min
 Delta R.T.: -0.006 min
 Response: 99138
 Conc: 0.84 ug/ml



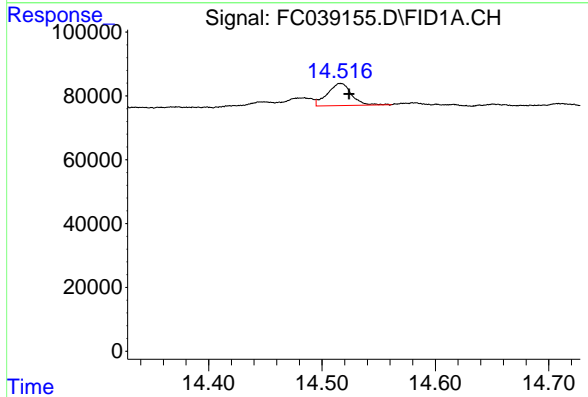
#12 1-chlorooctadecane (SURR)

R.T.: 12.656 min
 Delta R.T.: -0.018 min
 Response: 4401934
 Conc: 37.33 ug/ml

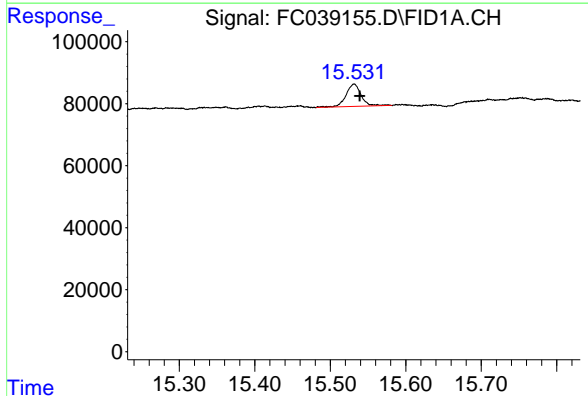


#13 n-Docosane (C22)
 R.T.: 13.421 min
 Delta R.T.: -0.006 min
 Response: 82918
 Conc: 0.70 ug/ml

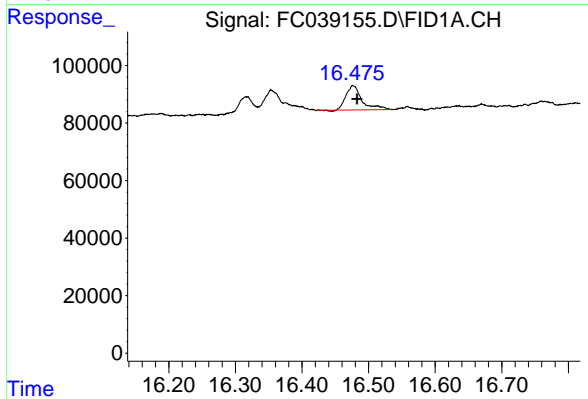
Instrument :
 FID_C
 ClientSampleId :
 JC-02-021119-KDL



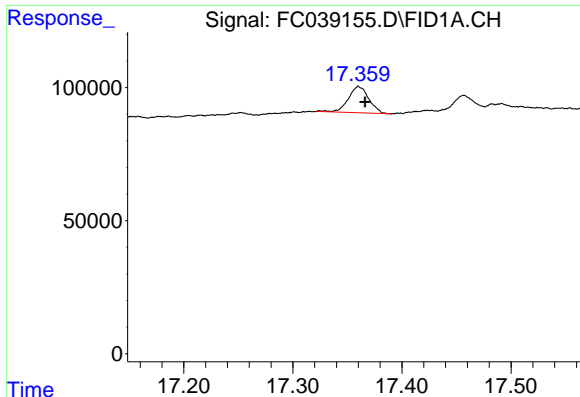
#14 n-Tetracosane (C24)
 R.T.: 14.516 min
 Delta R.T.: -0.008 min
 Response: 102291
 Conc: 0.87 ug/ml



#15 n-Hexacosane (C26)
 R.T.: 15.531 min
 Delta R.T.: -0.008 min
 Response: 100959
 Conc: 0.87 ug/ml



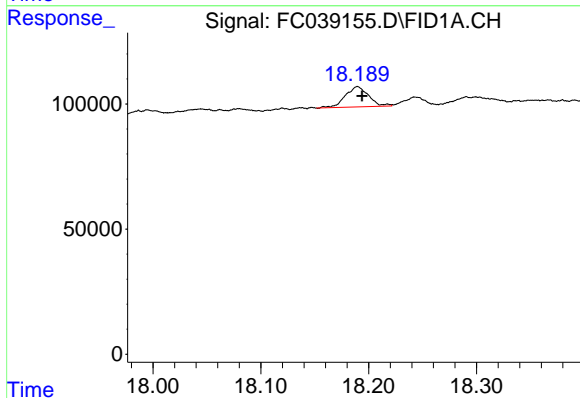
#16 n-Octacosane (C28)
 R.T.: 16.477 min
 Delta R.T.: -0.006 min
 Response: 140342
 Conc: 1.20 ug/ml



#17 n-Tricontane (C30)

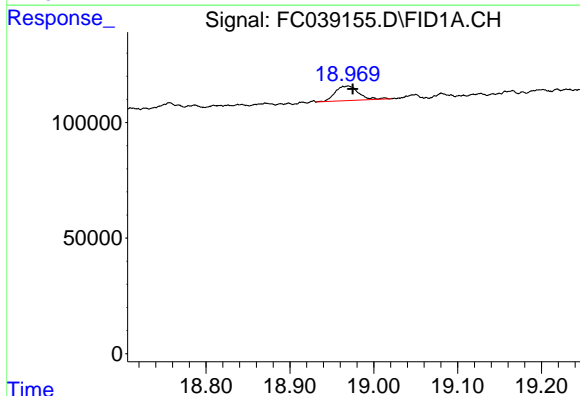
R.T.: 17.361 min
Delta R.T.: -0.005 min
Response: 128234
Conc: 1.10 ug/ml

Instrument :
FID_C
ClientSampleId :
JC-02-021119-KDL



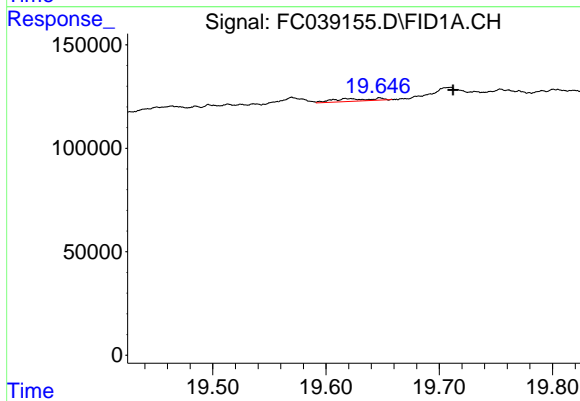
#18 n-Dotriacontane (C32)

R.T.: 18.190 min
Delta R.T.: -0.004 min
Response: 120944
Conc: 1.11 ug/ml



#19 n-Tetratriacontane (C34)

R.T.: 18.968 min
Delta R.T.: -0.007 min
Response: 120179
Conc: 1.30 ug/ml



#20 n-Hexatriacontane (C36)

R.T.: 19.648 min
Delta R.T.: -0.064 min
Response: 30286
Conc: 0.38 ug/ml