

Data Path : Z:\pestpcbsrv\HPCHEM1\FID_C\Data\FC021419AL\
 Data File : FC039194.D
 Signal(s) : FID1A.CH
 Acq On : 15 Feb 2019 8:30
 Operator : AJ\SJ
 Sample : K1350-07RE
 Misc :
 ALS Vial : 16 Sample Multiplier: 1

Instrument :
 FID_C
 ClientSampleId :
 EO-02-021319-BRE

Integration File: autoint1.e
 Quant Time: Feb 15 10:08:49 2019
 Quant Method : Z:\pestpcbsrv\HPCHEM1\FID_C\Method\Alaphatic EPH 020619.M
 Quant Title : GC Extractables
 QLast Update : Thu Feb 07 03:09:34 2019
 Response via : Initial Calibration
 Integrator: ChemStation 6890 Scale Mode: Large solvent peaks clipped

Volume Inj. : 1 ul
 Signal Phase : Rxi-1ms
 Signal Info : 20M x 0.18mm x 0.18um

Compound	R.T.	Response	Conc Units
System Monitoring Compounds			
9) S ortho-Terphenyl (SURR)	11.214	4153581	26.567 ug/ml
Spiked Amount	50.000	Recovery =	53.13%
12) S 1-chlorooctadecane (S...	12.671	51857672	439.801 ug/ml
Spiked Amount	50.000	Recovery =	879.60%

Target Compounds

(f)=RT Delta > 1/2 Window

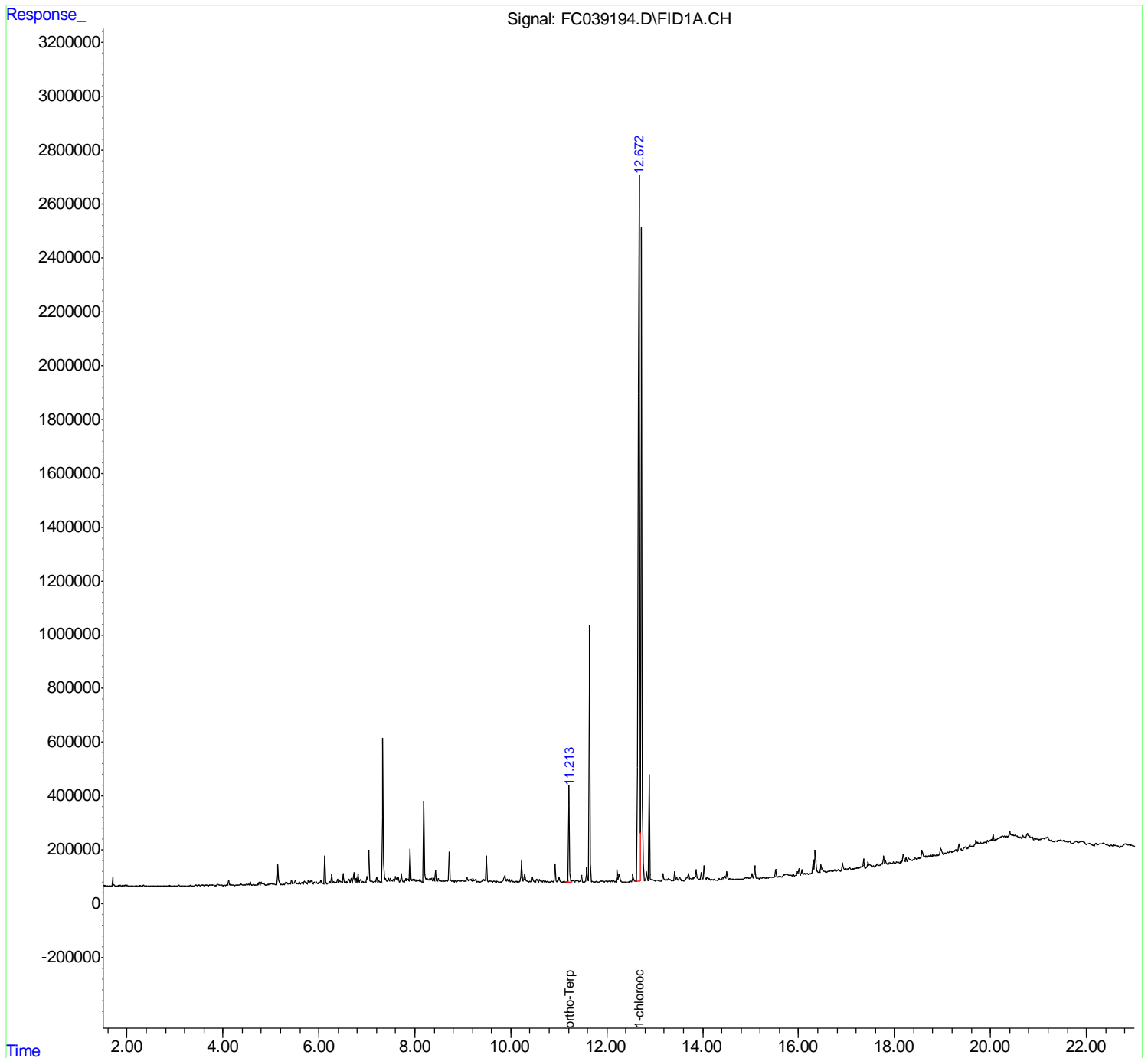
(m)=manual int.

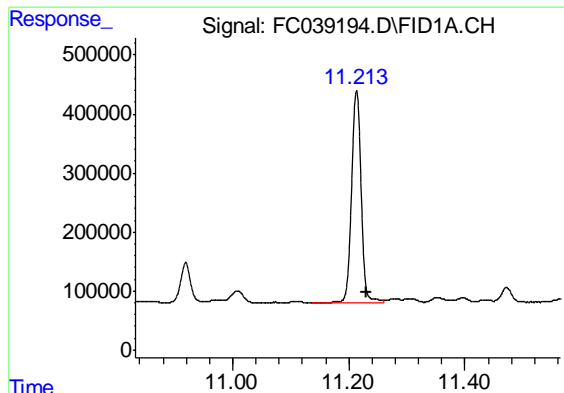
Data Path : Z:\pestpcbsrv\HPCHEM1\FID_C\Data\FC021419AL\
Data File : FC039194.D
Signal(s) : FID1A.CH
Acq On : 15 Feb 2019 8:30
Operator : AJ\SJ
Sample : K1350-07RE
Misc :
ALS Vial : 16 Sample Multiplier: 1

Instrument :
FID_C
ClientSampled :
EO-02-021319-BRE

Integration File: autoint1.e
Quant Time: Feb 15 10:08:49 2019
Quant Method : Z:\pestpcbsrv\HPCHEM1\FID_C\Method\Alaphatic EPH 020619.M
Quant Title : GC Extractables
QLast Update : Thu Feb 07 03:09:34 2019
Response via : Initial Calibration
Integrator: ChemStation 6890 Scale Mode: Large solvent peaks clipped

Volume Inj. : 1 ul
Signal Phase : Rxi-1ms
Signal Info : 20M x 0.18mm x 0.18um

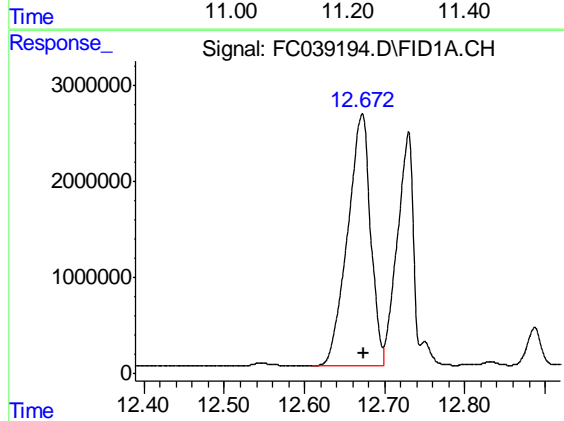




#9 ortho-Terphenyl (SURR)

R.T.: 11.214 min
Delta R.T.: -0.018 min
Response: 4153581
Conc: 26.57 ug/ml

Instrument :
FID_C
ClientSampleId :
EO-02-021319-BRE



#12 1-chlorooctadecane (SURR)

R.T.: 12.671 min
Delta R.T.: -0.003 min
Response: 51857672
Conc: 439.80 ug/ml