

Data Path : Z:\pestpcbsrv\HPCHEM1\FID_C\Data\FC021720AL\
 Data File : FC045860.D
 Signal(s) : FID1A.CH
 Acq On : 17 Feb 2020 23:24
 Operator : DD\AJ
 Sample : 20 PPM ALIPHATIC HC STD
 Misc :
 ALS Vial : 2 Sample Multiplier: 1

Integration File: sample.E
 Quant Time: Feb 18 00:50:53 2020
 Quant Method : Z:\pestpcbsrv\HPCHEM1\FID_C\Method\Alaphatic EPH 012120.M
 Quant Title : GC Extractables
 QLast Update : Wed Jan 22 04:15:47 2020
 Response via : Initial Calibration
 Integrator: ChemStation 6890 Scale Mode: Large solvent peaks clipped

Volume Inj. : 1 ul
 Signal Phase : Rxi-1ms
 Signal Info : 20M x 0.18mm x 0.18um

Compound	R.T.	Response	Conc Units

System Monitoring Compounds			
9) S ortho-Terphenyl (SURR)	11.760	2148961	19.549 ug/ml
Spiked Amount	50.000	Recovery	= 39.10%
12) S 1-chlorooctadecane (S...	13.179	1659729	19.089 ug/ml
Spiked Amount	50.000	Recovery	= 38.18%
Target Compounds			
1) T n-Nonane (C9)	3.528	2178018	22.518 ug/ml
2) T n-Decane (C10)	4.598	2190042	22.612 ug/ml
3) T A~Naphthalene (C11.7)	6.198	2352315	22.024 ug/ml
4) T n-Dodecane (C12)	6.611	2201495	22.519 ug/ml
5) T A~2-methylnaphthalene...	7.250	2339465	21.824 ug/ml
6) T n-Tetradecane (C14)	8.398	2176506	22.087 ug/ml
7) T n-Hexadecane (C16)	9.992	2146074	21.436 ug/ml
8) T n-Octadecane (C18)	11.429	2100421	20.622 ug/ml
10) T n-Eicosane (C20)	12.733	2030875	19.803 ug/ml
11) T n-Heneicosane (C21)	13.343	2005636	19.377 ug/ml
13) T n-Docosane (C22)	13.928	1957383	18.971 ug/ml
14) T n-Tetracosane (C24)	15.025	1902094	18.305 ug/ml
15) T n-Hexacosane (C26)	16.043	1838891	17.799 ug/ml
16) T n-Octacosane (C28)	16.991	1798114	17.592 ug/ml
17) T n-Tricontane (C30)	17.873	1746212	17.788 ug/ml
18) T n-Dotriacontane (C32)	18.703	1507852	18.121 ug/ml
19) T n-Tetratriacontane (C34)	19.483	1307807	18.480 ug/mlm
20) T n-Hexatriacontane (C36)	20.220	1221711	19.054 ug/mlm
21) T n-Octatriacontane (C38)	20.986	1108779	18.957 ug/mlm
22) T n-Tetracontane (C40)	21.955	1172596	19.877 ug/ml

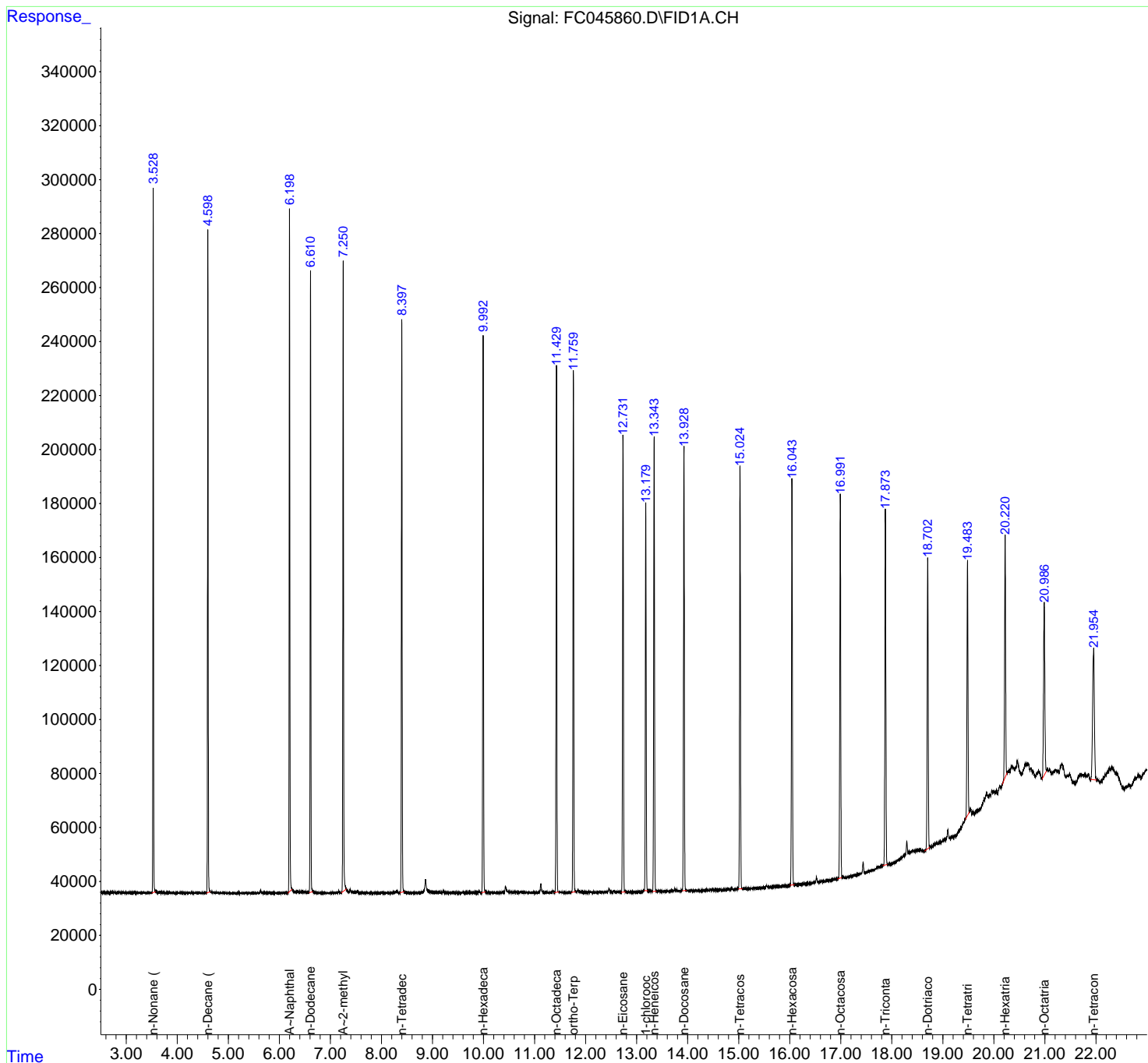
(f)=RT Delta > 1/2 Window

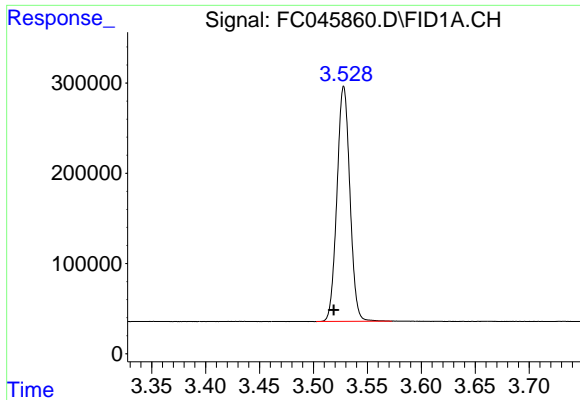
(m)=manual int.

Data Path : Z:\pestpcbsrv\HPCHEM1\FID_C\Data\FC021720AL\
 Data File : FC045860.D
 Signal(s) : FID1A.CH
 Acq On : 17 Feb 2020 23:24
 Operator : DD\AJ
 Sample : 20 PPM ALIPHATIC HC STD
 Misc :
 ALS Vial : 2 Sample Multiplier: 1

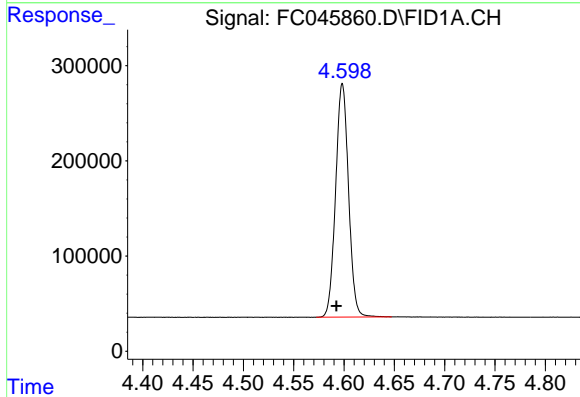
Integration File: sample.E
 Quant Time: Feb 18 00:50:53 2020
 Quant Method : Z:\pestpcbsrv\HPCHEM1\FID_C\Method\Aliphatic EPH 012120.M
 Quant Title : GC Extractables
 QLast Update : Wed Jan 22 04:15:47 2020
 Response via : Initial Calibration
 Integrator: ChemStation 6890 Scale Mode: Large solvent peaks clipped

Volume Inj. : 1 ul
 Signal Phase : Rxi-1ms
 Signal Info : 20M x 0.18mm x 0.18um

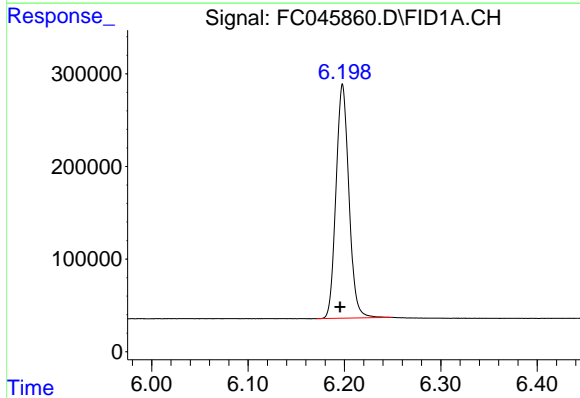




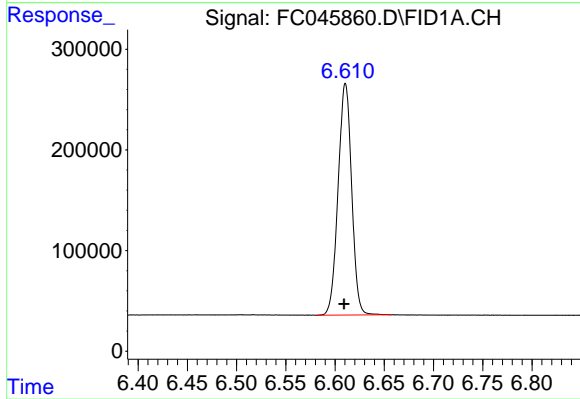
#1 n-Nonane (C9)
R.T.: 3.528 min
Delta R.T.: 0.009 min
Response: 2178018
Conc: 22.52 ug/ml



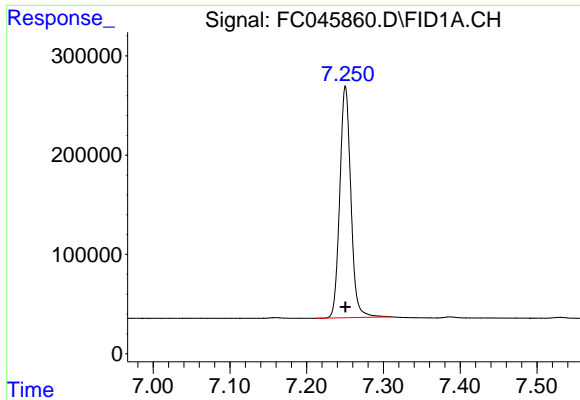
#2 n-Decane (C10)
R.T.: 4.598 min
Delta R.T.: 0.006 min
Response: 2190042
Conc: 22.61 ug/ml



#3 A~Naphthalene (C11.7)
R.T.: 6.198 min
Delta R.T.: 0.003 min
Response: 2352315
Conc: 22.02 ug/ml

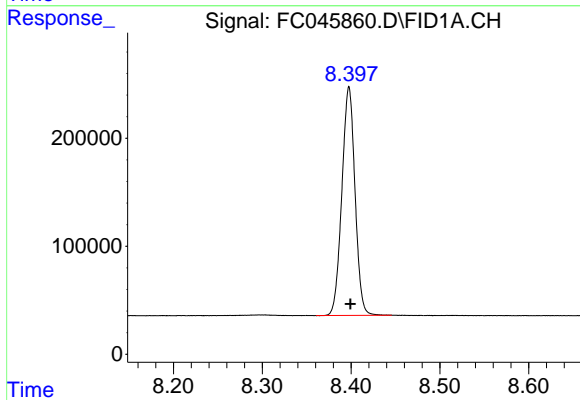


#4 n-Dodecane (C12)
R.T.: 6.611 min
Delta R.T.: 0.001 min
Response: 2201495
Conc: 22.52 ug/ml



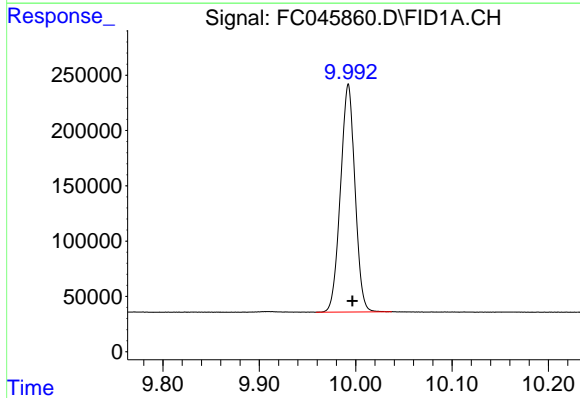
#5 A~2-methylnaphthalene (C12.89)

R.T.: 7.250 min
Delta R.T.: 0.000 min
Response: 2339465
Conc: 21.82 ug/ml



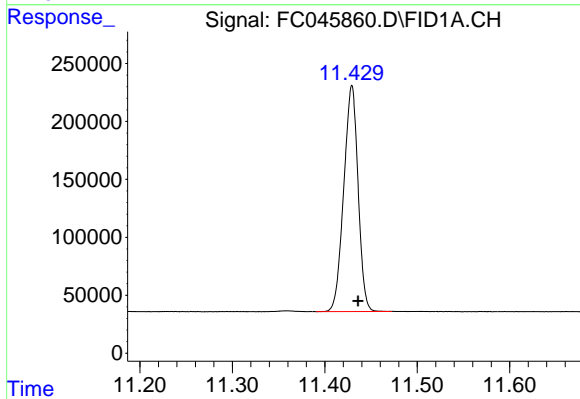
#6 n-Tetradecane (C14)

R.T.: 8.398 min
Delta R.T.: -0.002 min
Response: 2176506
Conc: 22.09 ug/ml



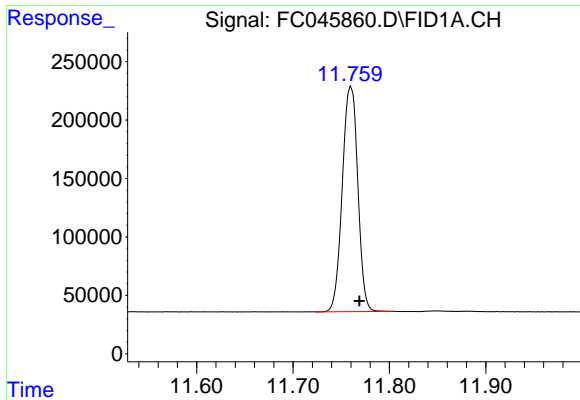
#7 n-Hexadecane (C16)

R.T.: 9.992 min
Delta R.T.: -0.004 min
Response: 2146074
Conc: 21.44 ug/ml



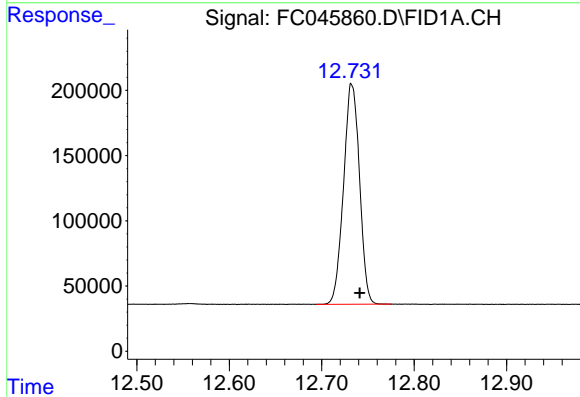
#8 n-Octadecane (C18)

R.T.: 11.429 min
Delta R.T.: -0.007 min
Response: 2100421
Conc: 20.62 ug/ml



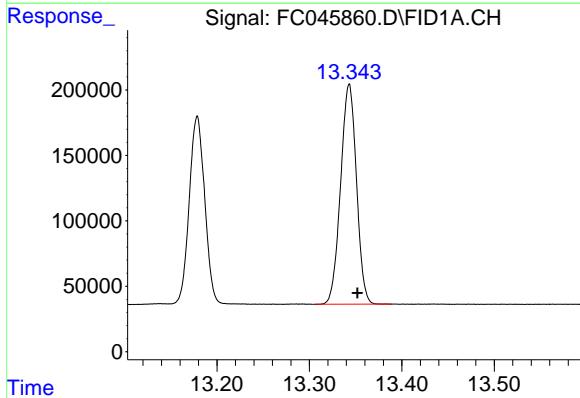
#9 ortho-Terphenyl (SURR)

R.T.: 11.760 min
 Delta R.T.: -0.009 min
 Response: 2148961
 Conc: 19.55 ug/ml



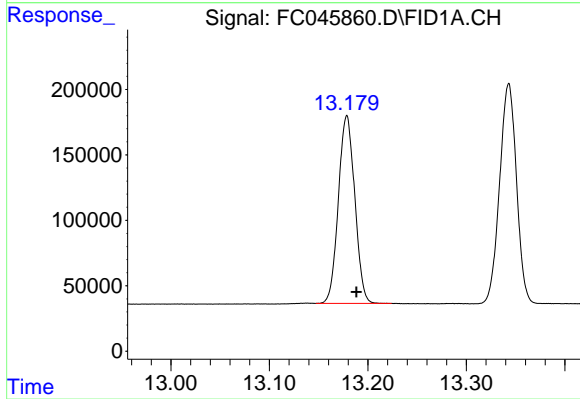
#10 n-Eicosane (C20)

R.T.: 12.733 min
 Delta R.T.: -0.009 min
 Response: 2030875
 Conc: 19.80 ug/ml



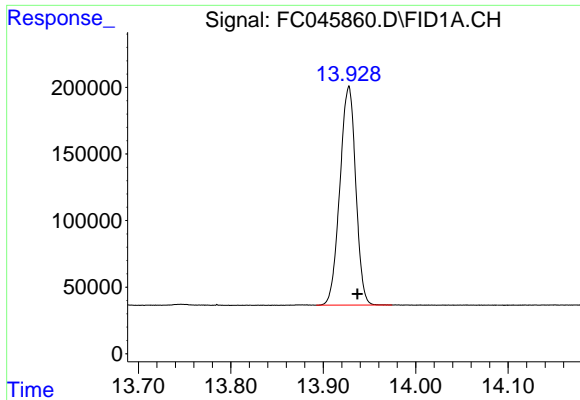
#11 n-Heneicosane (C21)

R.T.: 13.343 min
 Delta R.T.: -0.009 min
 Response: 2005636
 Conc: 19.38 ug/ml



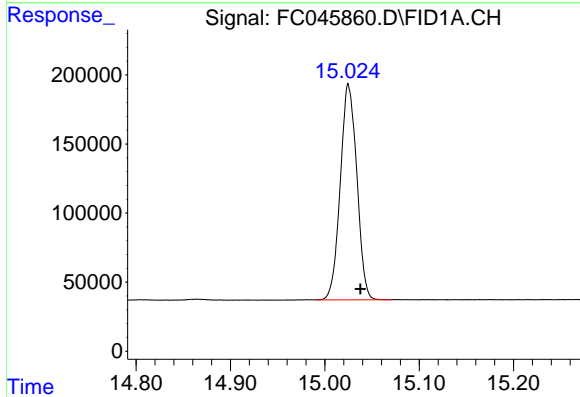
#12 1-chlorooctadecane (SURR)

R.T.: 13.179 min
 Delta R.T.: -0.010 min
 Response: 1659729
 Conc: 19.09 ug/ml



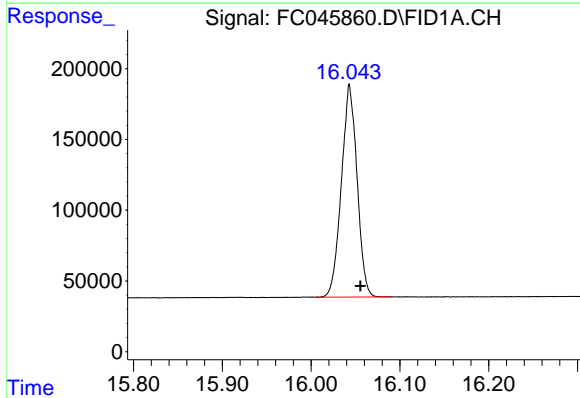
#13 n-Docosane (C22)

R.T.: 13.928 min
Delta R.T.: -0.009 min
Response: 1957383
Conc: 18.97 ug/ml



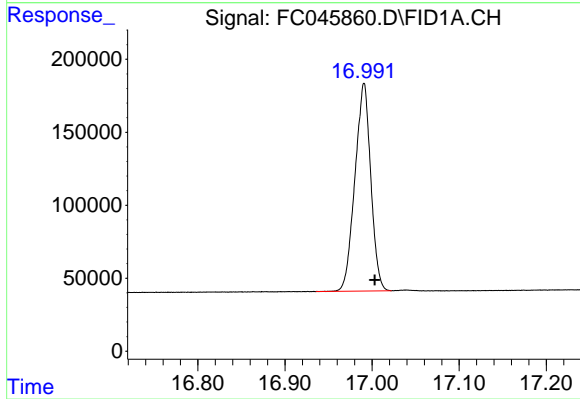
#14 n-Tetracosane (C24)

R.T.: 15.025 min
Delta R.T.: -0.013 min
Response: 1902094
Conc: 18.30 ug/ml



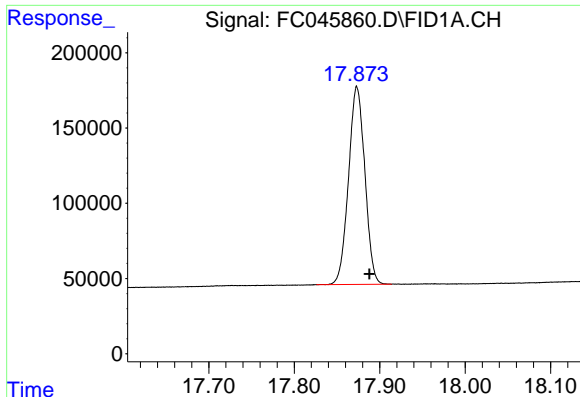
#15 n-Hexacosane (C26)

R.T.: 16.043 min
Delta R.T.: -0.012 min
Response: 1838891
Conc: 17.80 ug/ml



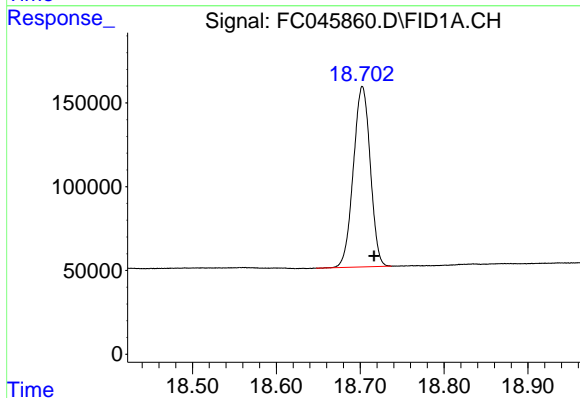
#16 n-Octacosane (C28)

R.T.: 16.991 min
Delta R.T.: -0.012 min
Response: 1798114
Conc: 17.59 ug/ml



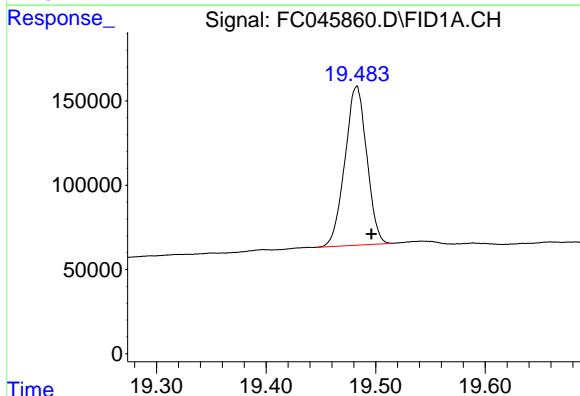
#17 n-Tricontane (C30)

R.T.: 17.873 min
Delta R.T.: -0.015 min
Response: 1746212
Conc: 17.79 ug/ml



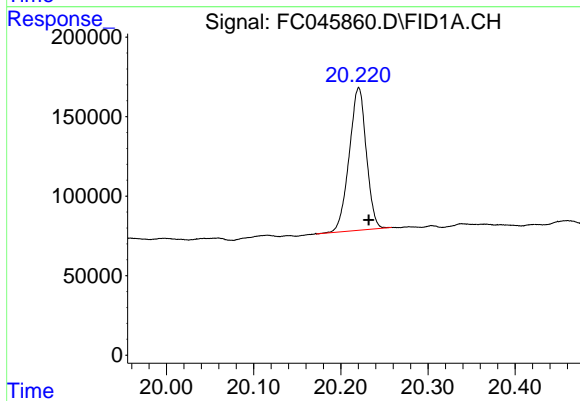
#18 n-Dotriacontane (C32)

R.T.: 18.703 min
Delta R.T.: -0.014 min
Response: 1507852
Conc: 18.12 ug/ml



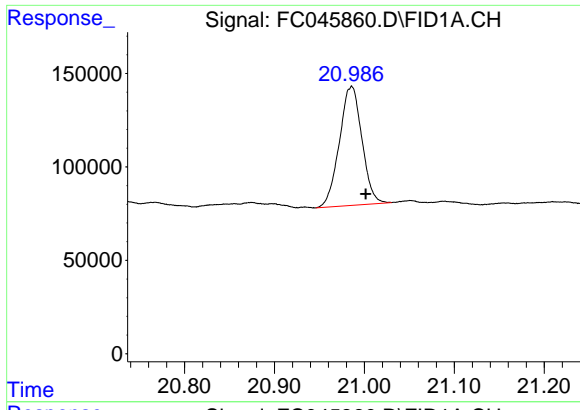
#19 n-Tetratriacontane (C34)

R.T.: 19.483 min
Delta R.T.: -0.013 min
Response: 1307807
Conc: 18.48 ug/ml m



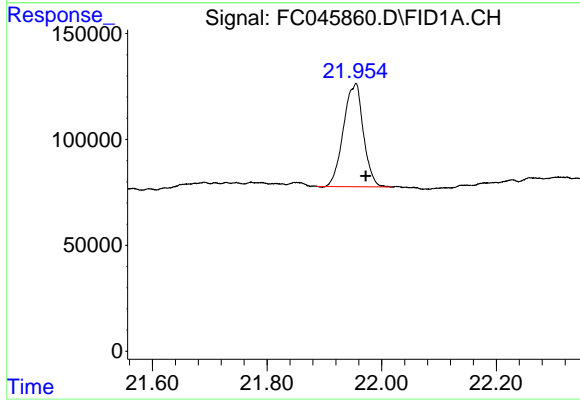
#20 n-Hexatriacontane (C36)

R.T.: 20.220 min
Delta R.T.: -0.012 min
Response: 1221711
Conc: 19.05 ug/ml m



#21 n-Octatriacontane (C38)

R.T.: 20.986 min
Delta R.T.: -0.016 min
Response: 1108779
Conc: 18.96 ug/ml m



#22 n-Tetracontane (C40)

R.T.: 21.955 min
Delta R.T.: -0.017 min
Response: 1172596
Conc: 19.88 ug/ml