

Data Path : Z:\pestpcbsrv\HPCHEM1\FID\_C\Data\FC021725AL\  
 Data File : FC068271.D  
 Signal(s) : FID1A.ch  
 Acq On : 17 Feb 2025 09:51  
 Operator : YP/AJ  
 Sample : 20 PPM ALIPHATIC HC STD  
 Misc :  
 ALS Vial : 3 Sample Multiplier: 1

**Instrument :**  
 FID\_C  
**ClientSampleId :**  
 20 PPM ALIPHATIC HC STD

**Manual Integrations**  
**APPROVED**

Reviewed By :Yogesh Patel 02/18/2025  
 Supervised By :Ankita Jodhani 02/18/2025

Integration File: autoint1.e  
 Quant Time: Feb 18 02:03:14 2025  
 Quant Method : Z:\pestpcbsrv\HPCHEM1\FID\_C\Method\Aliphatic EPH 021125.M  
 Quant Title : GC Extractables  
 QLast Update : Wed Feb 12 12:52:40 2025  
 Response via : Initial Calibration  
 Integrator: ChemStation

Volume Inj. : 1 ul  
 Signal Phase : Rxi-1ms  
 Signal Info : 20M x 0.18mm x 0.18um

Compound	R.T.	Response	Conc Units
-----			
System Monitoring Compounds			
9) S ortho-Terphenyl (SURR)	11.399	2855031	18.270 ug/ml
Spiked Amount	50.000	Recovery =	36.54%
12) S 1-chlorooctadecane (S...	12.841	2098206	18.245 ug/ml
Spiked Amount	50.000	Recovery =	36.49%
Target Compounds			
1) T n-Nonane (C9)	3.206	2593270	18.938 ug/ml
2) T n-Decane (C10)	4.263	2668964	19.224 ug/ml
3) T A~Naphthalene (C11.7)	5.831	2888252	19.239 ug/ml
4) T n-Dodecane (C12)	6.272	2650302	18.972 ug/ml
5) T A~2-methylnaphthalene...	6.883	2732463	19.024 ug/ml
6) T n-Tetradecane (C14)	8.060	2561455	18.768 ug/ml
7) T n-Hexadecane (C16)	9.657	2582540	18.586 ug/ml
8) T n-Octadecane (C18)	11.095	2590780	18.517 ug/ml
10) T n-Eicosane (C20)	12.400	2474487	18.494 ug/ml
11) T n-Heneicosane (C21)	13.011	2417320	18.405 ug/ml
13) T n-Docosane (C22)	13.596	2407922	18.589 ug/mlm
14) T n-Tetracosane (C24)	14.697	2413452	18.798 ug/ml
15) T n-Hexacosane (C26)	15.716	2383941	18.945 ug/ml
16) T n-Octacosane (C28)	16.665	2411899	19.284 ug/ml
17) T n-Tricontane (C30)	17.551	2562592	19.826 ug/ml
18) T n-Dotriacontane (C32)	18.383	2519933	20.158 ug/mlm
19) T n-Tetratriacontane (C34)	19.164	2189667	20.186 ug/ml
20) T n-Hexatriacontane (C36)	19.902	1842931	19.914 ug/ml
21) T n-Octatriacontane (C38)	20.615	1672825	19.522 ug/ml
22) T n-Tetracontane (C40)	21.469	1552898	19.205 ug/ml

(f)=RT Delta > 1/2 Window

(m)=manual int.

Data Path : Z:\pestpcbsrv\HPCHEM1\FID\_C\Data\FC021725AL\  
 Data File : FC068271.D  
 Signal(s) : FID1A.ch  
 Acq On : 17 Feb 2025 09:51  
 Operator : YP/AJ  
 Sample : 20 PPM ALIPHATIC HC STD  
 Misc :  
 ALS Vial : 3 Sample Multiplier: 1

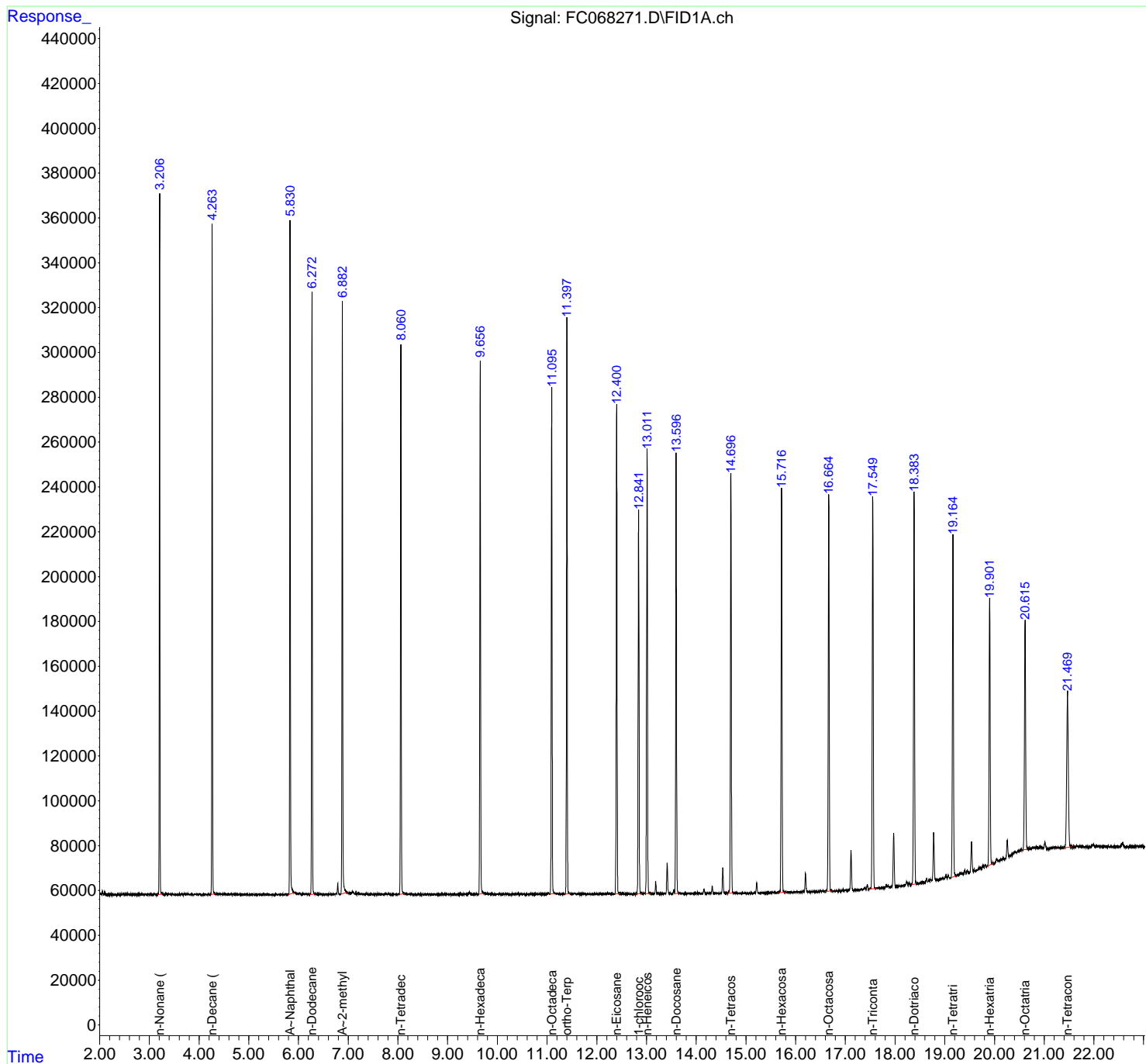
Instrument :  
 FID\_C  
 ClientSampleId :  
 20 PPM ALIPHATIC HC STD

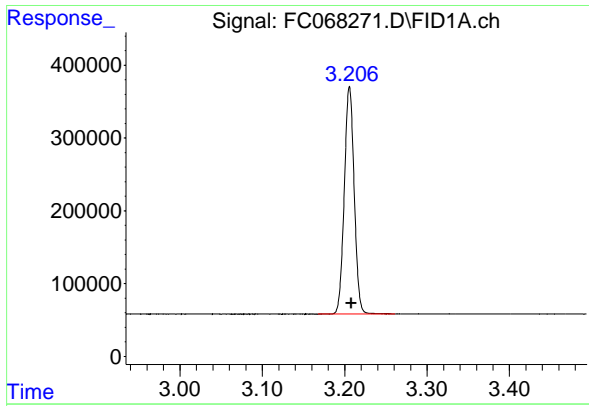
Manual Integrations  
 APPROVED

Reviewed By :Yogesh Patel 02/18/2025  
 Supervised By :Ankita Jodhani 02/18/2025

Integration File: autoint1.e  
 Quant Time: Feb 18 02:03:14 2025  
 Quant Method : Z:\pestpcbsrv\HPCHEM1\FID\_C\Method\Aliphatic EPH 021125.M  
 Quant Title : GC Extractables  
 QLast Update : Wed Feb 12 12:52:40 2025  
 Response via : Initial Calibration  
 Integrator: ChemStation

Volume Inj. : 1 ul  
 Signal Phase : Rxi-1ms  
 Signal Info : 20M x 0.18mm x 0.18um





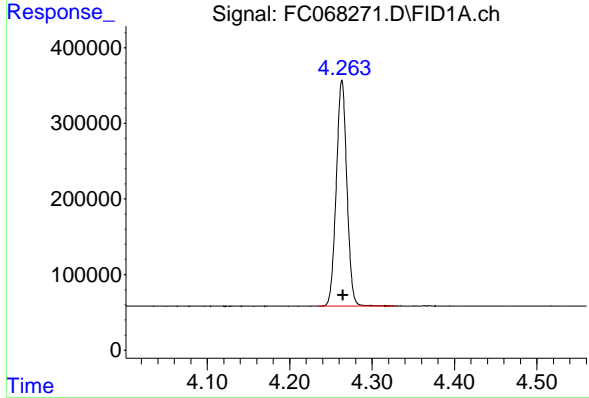
#1 n-Nonane (C9)

R.T.: 3.206 min  
 Delta R.T.: -0.002 min  
 Response: 2593270  
 Conc: 18.94 ug/ml

Instrument : FID\_C  
 Client Sample Id : 20 PPM ALIPHATIC HC STD

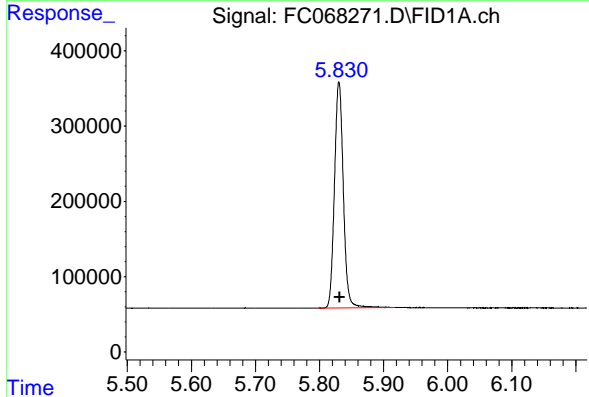
Manual Integrations  
 APPROVED

Reviewed By :Yogesh Patel 02/18/2025  
 Supervised By :Ankita Jodhani 02/18/2025



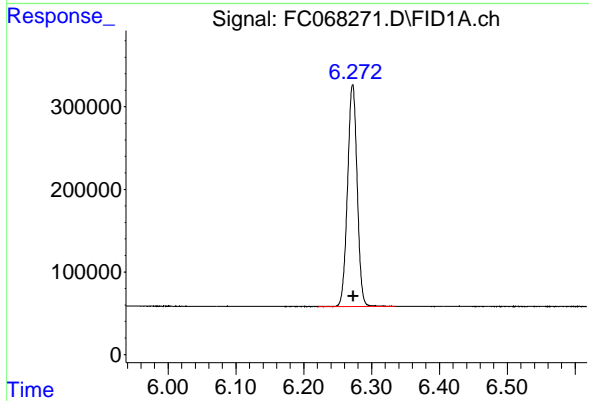
#2 n-Decane (C10)

R.T.: 4.263 min  
 Delta R.T.: -0.001 min  
 Response: 2668964  
 Conc: 19.22 ug/ml



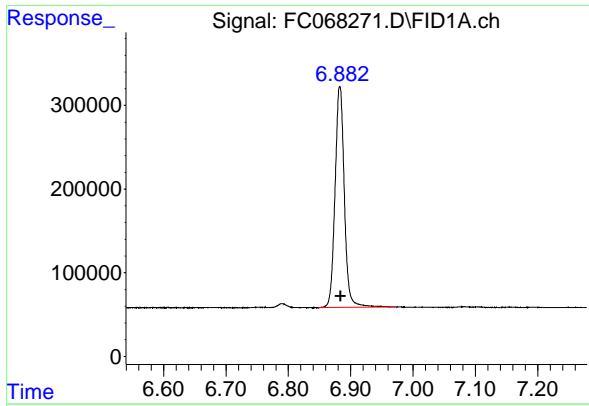
#3 A~Naphthalene (C11.7)

R.T.: 5.831 min  
 Delta R.T.: 0.000 min  
 Response: 2888252  
 Conc: 19.24 ug/ml



#4 n-Dodecane (C12)

R.T.: 6.272 min  
 Delta R.T.: -0.001 min  
 Response: 2650302  
 Conc: 18.97 ug/ml



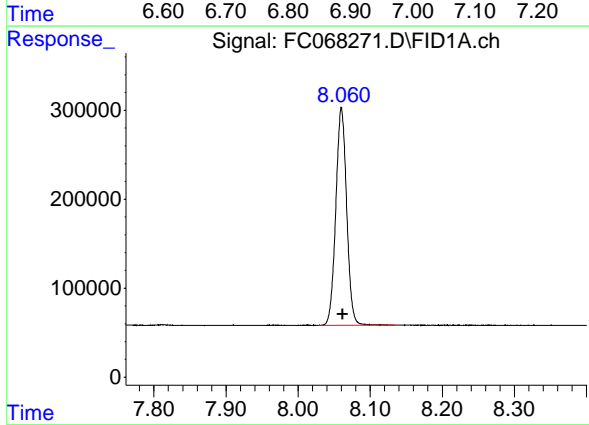
#5 A~2-methylnaphthalene (C12.89)

R.T.: 6.883 min  
 Delta R.T.: -0.001 min  
 Response: 2732463  
 Conc: 19.02 ug/ml

Instrument : FID\_C  
 Client Sample Id : 20 PPM ALIPHATIC HC STD

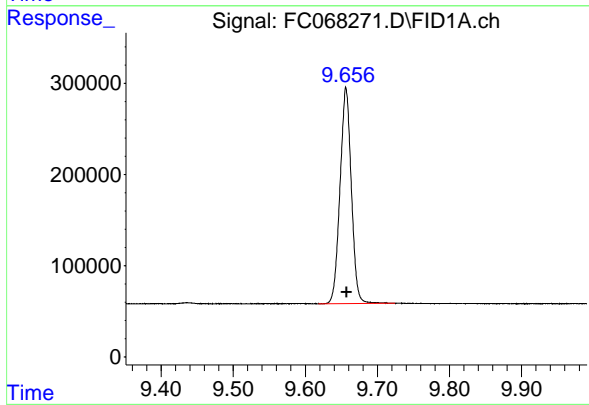
Manual Integrations  
 APPROVED

Reviewed By :Yogesh Patel 02/18/2025  
 Supervised By :Ankita Jodhani 02/18/2025



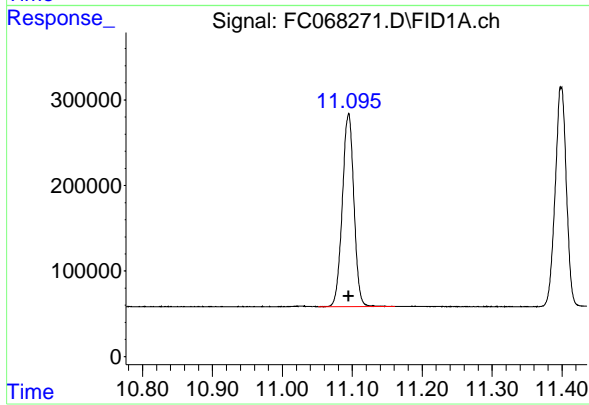
#6 n-Tetradecane (C14)

R.T.: 8.060 min  
 Delta R.T.: -0.001 min  
 Response: 2561455  
 Conc: 18.77 ug/ml



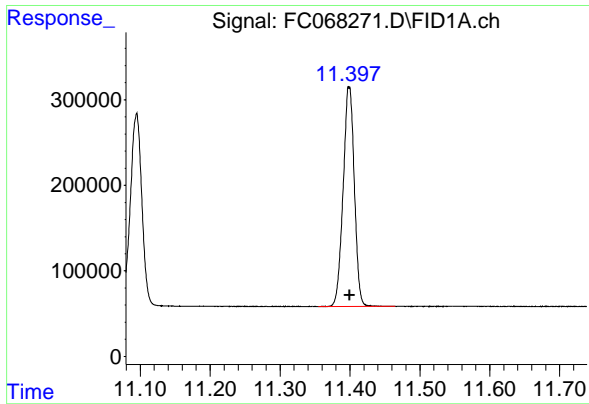
#7 n-Hexadecane (C16)

R.T.: 9.657 min  
 Delta R.T.: 0.000 min  
 Response: 2582540  
 Conc: 18.59 ug/ml



#8 n-Octadecane (C18)

R.T.: 11.095 min  
 Delta R.T.: 0.000 min  
 Response: 2590780  
 Conc: 18.52 ug/ml



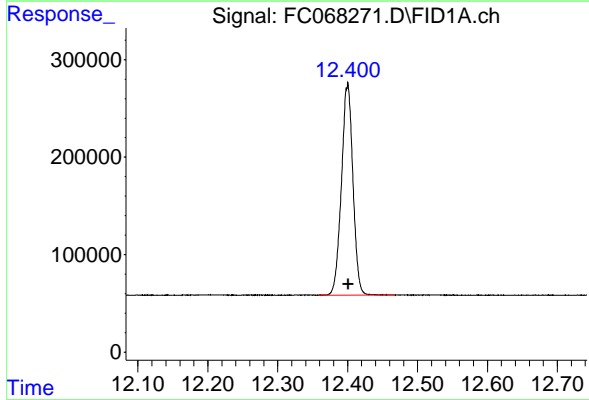
#9 ortho-Terphenyl (SURR)

R.T.: 11.399 min  
 Delta R.T.: 0.000 min  
 Response: 2855031  
 Conc: 18.27 ug/ml

Instrument : FID\_C  
 ClientSampleId : 20 PPM ALIPHATIC HC STD

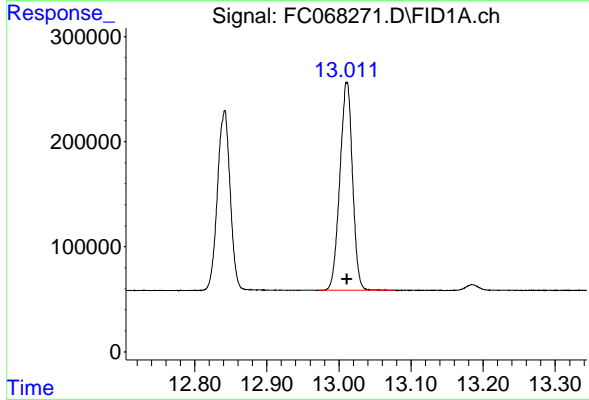
Manual Integrations  
 APPROVED

Reviewed By :Yogesh Patel 02/18/2025  
 Supervised By :Ankita Jodhani 02/18/2025



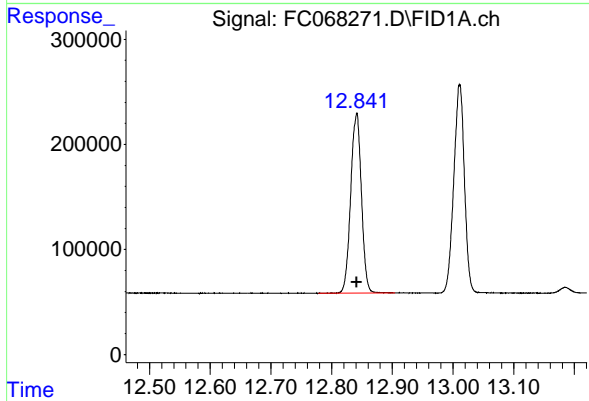
#10 n-Eicosane (C20)

R.T.: 12.400 min  
 Delta R.T.: 0.000 min  
 Response: 2474487  
 Conc: 18.49 ug/ml



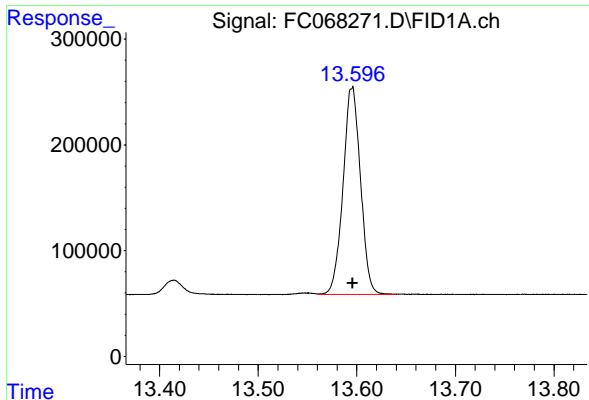
#11 n-Heneicosane (C21)

R.T.: 13.011 min  
 Delta R.T.: 0.000 min  
 Response: 2417320  
 Conc: 18.41 ug/ml



#12 1-chlorooctadecane (SURR)

R.T.: 12.841 min  
 Delta R.T.: 0.000 min  
 Response: 2098206  
 Conc: 18.24 ug/ml



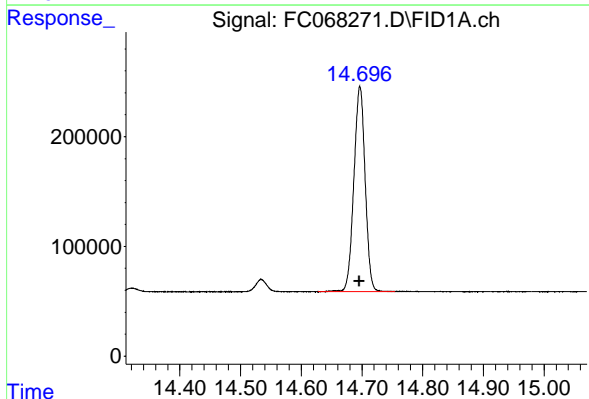
#13 n-Docosane (C22)

R.T.: 13.596 min  
 Delta R.T.: 0.000 min  
 Response: 2407922  
 Conc: 18.59 ug/ml

Instrument : FID\_C  
 Client Sample Id : 20 PPM ALIPHATIC HC STD

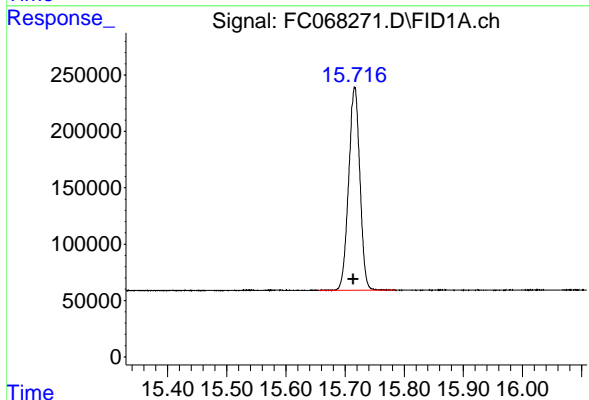
Manual Integrations  
 APPROVED

Reviewed By :Yogesh Patel 02/18/2025  
 Supervised By :Ankita Jodhani 02/18/2025



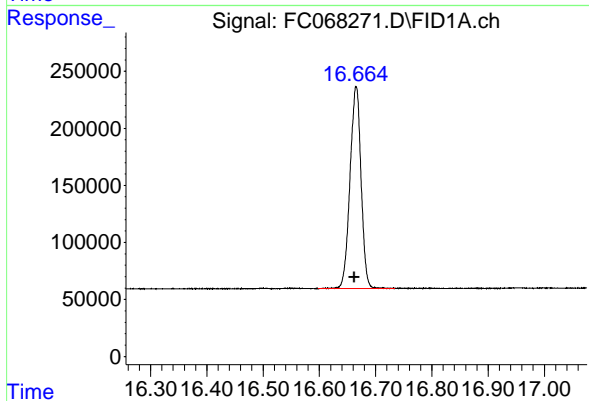
#14 n-Tetracosane (C24)

R.T.: 14.697 min  
 Delta R.T.: 0.000 min  
 Response: 2413452  
 Conc: 18.80 ug/ml



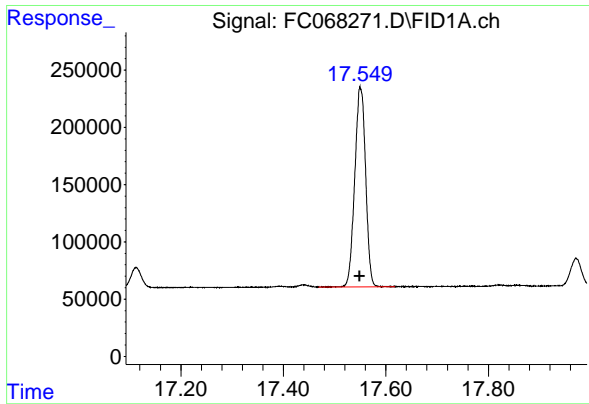
#15 n-Hexacosane (C26)

R.T.: 15.716 min  
 Delta R.T.: 0.002 min  
 Response: 2383941  
 Conc: 18.94 ug/ml



#16 n-Octacosane (C28)

R.T.: 16.665 min  
 Delta R.T.: 0.003 min  
 Response: 2411899  
 Conc: 19.28 ug/ml



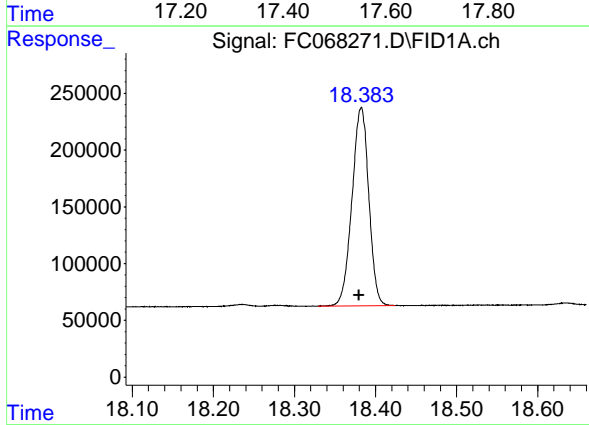
#17 n-Tricontane (C30)

R.T.: 17.551 min  
 Delta R.T.: 0.002 min  
 Response: 2562592  
 Conc: 19.83 ug/ml

Instrument : FID\_C  
 Client Sample Id : 20 PPM ALIPHATIC HC STD

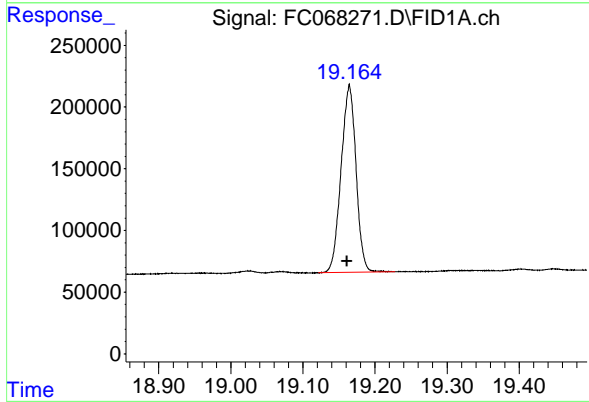
Manual Integrations  
 APPROVED

Reviewed By :Yogesh Patel 02/18/2025  
 Supervised By :Ankita Jodhani 02/18/2025



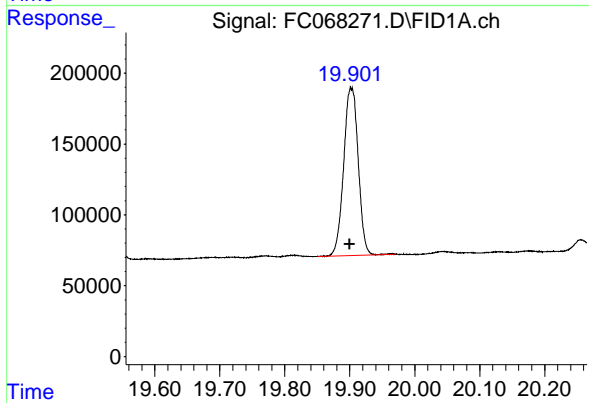
#18 n-Dotriacontane (C32)

R.T.: 18.383 min  
 Delta R.T.: 0.003 min  
 Response: 2519933  
 Conc: 20.16 ug/ml m



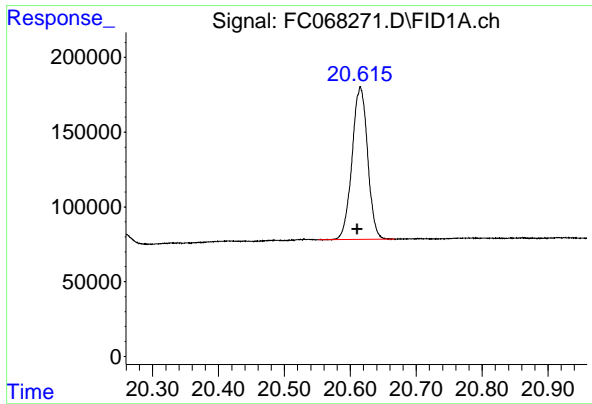
#19 n-Tetraatriacontane (C34)

R.T.: 19.164 min  
 Delta R.T.: 0.003 min  
 Response: 2189667  
 Conc: 20.19 ug/ml



#20 n-Hexatriacontane (C36)

R.T.: 19.902 min  
 Delta R.T.: 0.002 min  
 Response: 1842931  
 Conc: 19.91 ug/ml



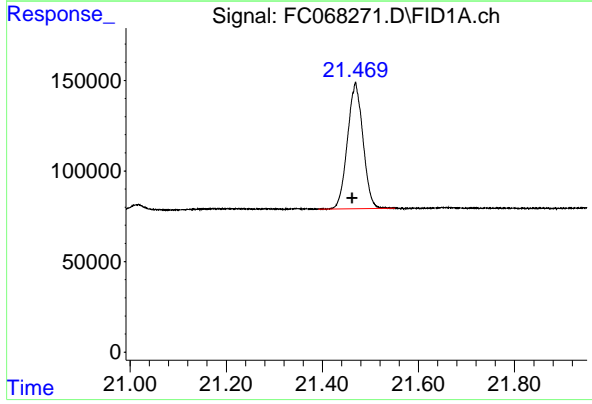
#21 n-Octatriacontane (C38)

R.T.: 20.615 min  
 Delta R.T.: 0.004 min  
 Response: 1672825  
 Conc: 19.52 ug/ml

Instrument : FID\_C  
 ClientSampleId : 20 PPM ALIPHATIC HC STD

Manual Integrations  
 APPROVED

Reviewed By :Yogesh Patel 02/18/2025  
 Supervised By :Ankita Jodhani 02/18/2025



#22 n-Tetracontane (C40)

R.T.: 21.469 min  
 Delta R.T.: 0.006 min  
 Response: 1552898  
 Conc: 19.20 ug/ml