

Data Path : Z:\pestpcbsrv\HPCHEM1\FID_C\Data\FC021822AL\
 Data File : FC058387.D
 Signal(s) : FID1A.CH
 Acq On : 18 Feb 2022 13:23
 Operator : YP\AJ
 Sample : N1572-01
 Misc :
 ALS Vial : 6 Sample Multiplier: 1

Instrument :
 FID_C
 ClientSampleId :
 PL-02-021622

Integration File: autoint1.e
 Quant Time: Feb 18 22:15:05 2022
 Quant Method : Z:\pestpcbsrv\HPCHEM1\FID_C\Method\Aliphatic EPH 021522.M
 Quant Title : GC Extractables
 QLast Update : Wed Feb 16 02:18:53 2022
 Response via : Initial Calibration
 Integrator: ChemStation 6890 Scale Mode: Large solvent peaks clipped

Volume Inj. : 1 ul
 Signal Phase : Rxi-1ms
 Signal Info : 20M x 0.18mm x 0.18um

Compound	R.T.	Response	Conc Units

System Monitoring Compounds			
9) S ortho-Terphenyl (SURR)	11.387	41870742	29.840 ug/ml
Spiked Amount	50.000	Recovery	= 59.68%
12) S 1-chlorooctadecane (S...	12.826	48475067	46.318 ug/ml
Spiked Amount	50.000	Recovery	= 92.64%

Target Compounds

(f)=RT Delta > 1/2 Window

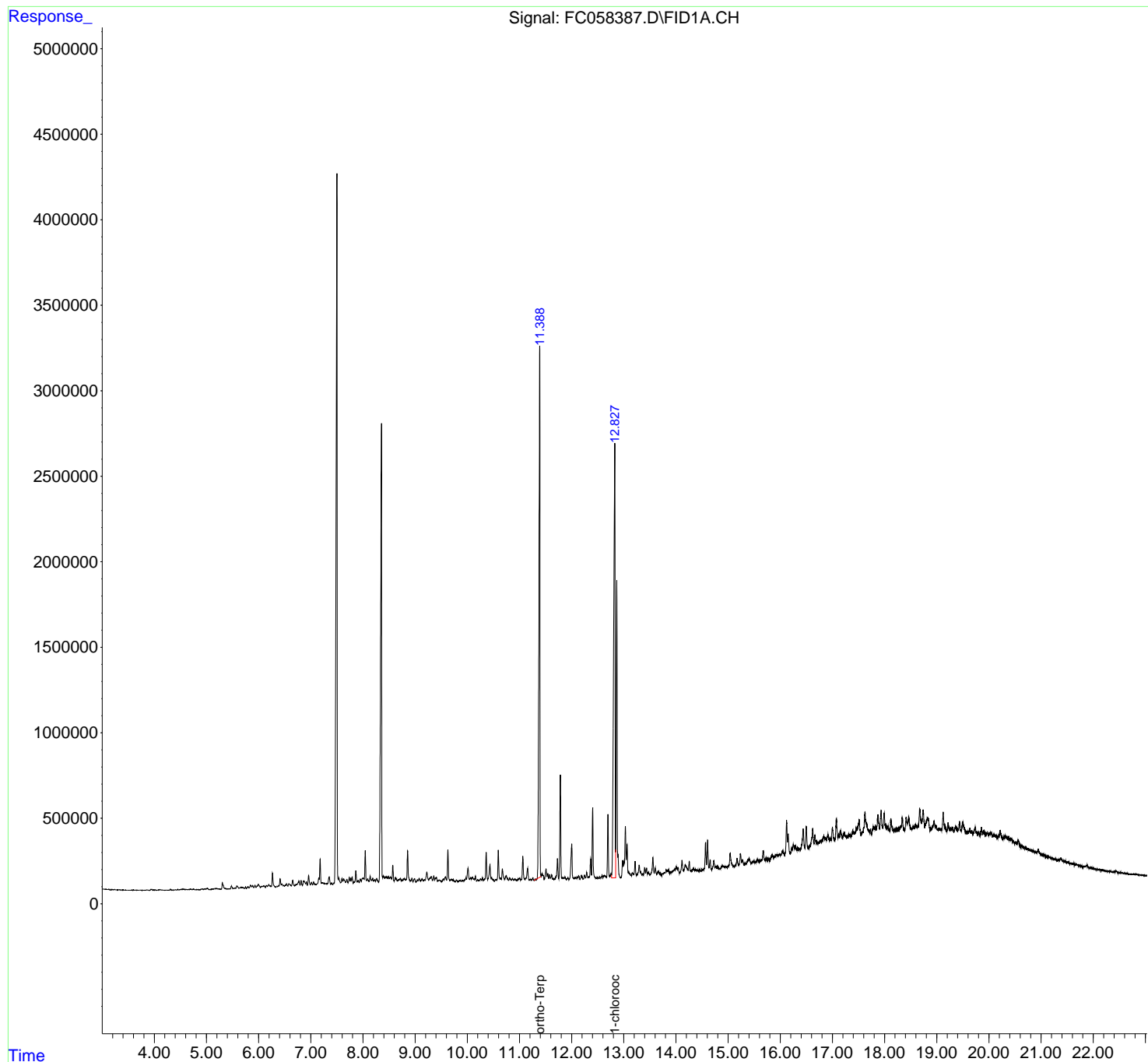
(m)=manual int.

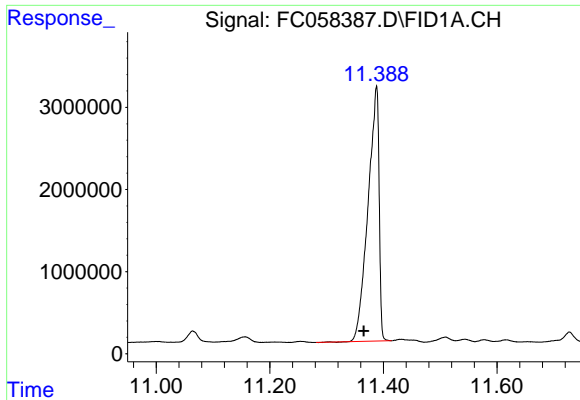
Data Path : Z:\pestpcbsrv\HPCHEM1\FID_C\Data\FC021822AL\
Data File : FC058387.D
Signal(s) : FID1A.CH
Acq On : 18 Feb 2022 13:23
Operator : YP\AJ
Sample : N1572-01
Misc :
ALS Vial : 6 Sample Multiplier: 1

Instrument :
FID_C
ClientSampleId :
PL-02-021622

Integration File: autoint1.e
Quant Time: Feb 18 22:15:05 2022
Quant Method : Z:\pestpcbsrv\HPCHEM1\FID_C\Method\Aliphatic EPH 021522.M
Quant Title : GC Extractables
QLast Update : Wed Feb 16 02:18:53 2022
Response via : Initial Calibration
Integrator: ChemStation 6890 Scale Mode: Large solvent peaks clipped

Volume Inj. : 1 ul
Signal Phase : Rxi-1ms
Signal Info : 20M x 0.18mm x 0.18um

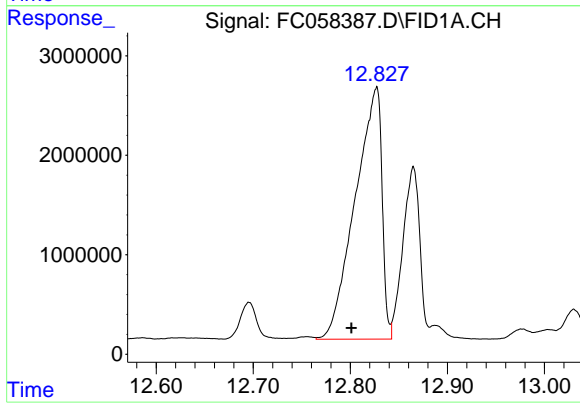




#9 ortho-Terphenyl (SURR)

R.T.: 11.387 min
Delta R.T.: 0.021 min
Response: 41870742
Conc: 29.84 ug/ml

Instrument :
FID_C
ClientSampleId :
PL-02-021622



#12 1-chlorooctadecane (SURR)

R.T.: 12.826 min
Delta R.T.: 0.024 min
Response: 48475067
Conc: 46.32 ug/ml