

Data Path : Z:\pestpcbsrv\HPCHEM1\FID_C\Data\FC022023AL\
Data File : FC062936.D
Signal(s) : FID1A.ch
Acq On : 20 Feb 2023 11:35
Operator : YP/AJ
Sample : I.BLK
Misc :
ALS Vial : 1 Sample Multiplier: 1

Instrument :
FID_C
ClientSampleId :
I.BLK

Integration File: autoint1.e
Quant Time: Feb 21 02:20:10 2023
Quant Method : Z:\pestpcbsrv\HPCHEM1\FID_C\Method\Aliphatic EPH 012623.M
Quant Title : GC Extractables
QLast Update : Fri Jan 27 04:11:29 2023
Response via : Initial Calibration
Integrator: ChemStation

Volume Inj. : 1 u1
Signal Phase : Rxi-1ms
Signal Info : 20M x 0.18mm x 0.18um

Compound	R.T.	Response	Conc Units
----------	------	----------	------------

System Monitoring Compounds

Target Compounds

(f)=RT Delta > 1/2 Window

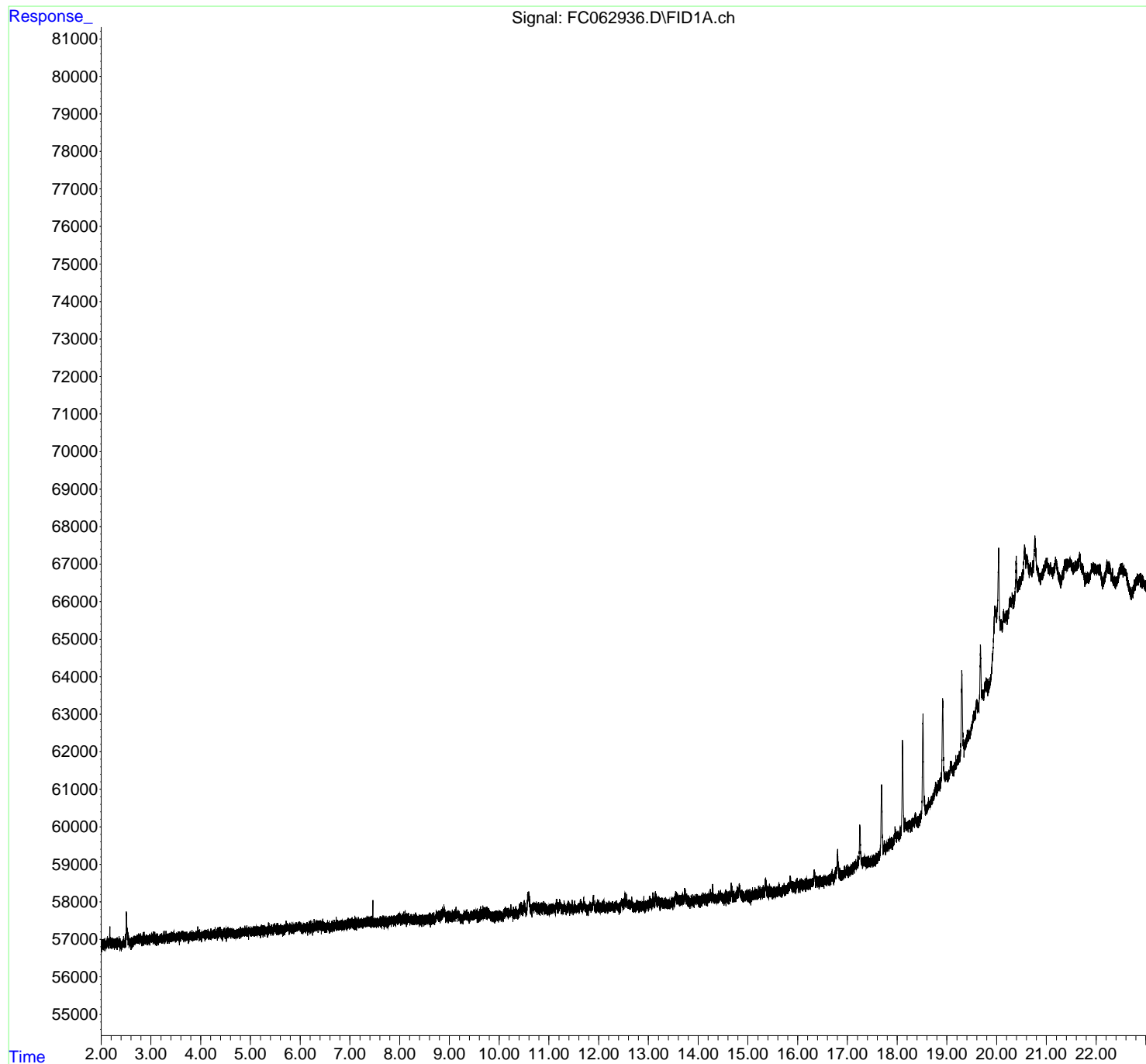
(m)=manual int.

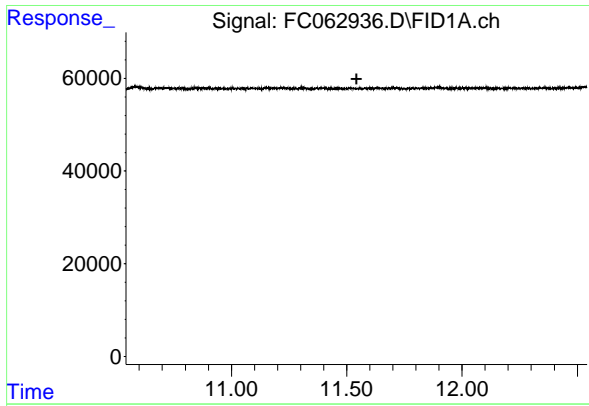
Data Path : Z:\pestpcbsrv\HPCHEM1\FID_C\Data\FC022023AL\
Data File : FC062936.D
Signal(s) : FID1A.ch
Acq On : 20 Feb 2023 11:35
Operator : YP/AJ
Sample : I.BLK
Misc :
ALS Vial : 1 Sample Multiplier: 1

Instrument :
FID_C
ClientSampleId :
I.BLK

Integration File: autoint1.e
Quant Time: Feb 21 02:20:10 2023
Quant Method : Z:\pestpcbsrv\HPCHEM1\FID_C\Method\Aliphatic EPH 012623.M
Quant Title : GC Extractables
QLast Update : Fri Jan 27 04:11:29 2023
Response via : Initial Calibration
Integrator: ChemStation

Volume Inj. : 1 ul
Signal Phase : Rxi-1ms
Signal Info : 20M x 0.18mm x 0.18um

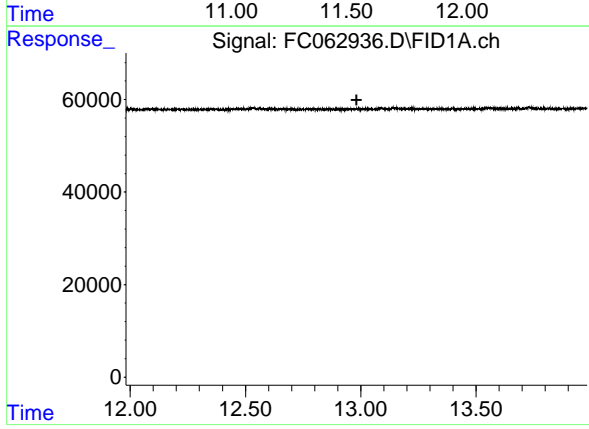




#9 ortho-Terphenyl (SURR)

R.T.: 0.000 min
Exp R.T. : 11.543 min
Response: 0
Conc: N.D.

Instrument :
FID_C
ClientSampleId :
I.BLK



#12 1-chlorooctadecane (SURR)

R.T.: 0.000 min
Exp R.T. : 12.982 min
Response: 0
Conc: N.D.