

Data Path : Z:\pestpcbsrv\HPCHEM1\FID_C\Data\FC022119AL\
 Data File : FC039333.D
 Signal(s) : FID1A.CH
 Acq On : 21 Feb 2019 21:36
 Operator : AJ\SJ
 Sample : K1344-01
 Misc :
 ALS Vial : 18 Sample Multiplier: 1

Integration File: sample.E
 Quant Time: Feb 22 03:25:10 2019
 Quant Method : Z:\pestpcbsrv\HPCHEM1\FID_C\Method\Alaphatic EPH 020619.M
 Quant Title : GC Extractables
 QLast Update : Thu Feb 07 03:09:34 2019
 Response via : Initial Calibration
 Integrator: ChemStation 6890 Scale Mode: Large solvent peaks clipped

Volume Inj. : 1 ul
 Signal Phase : Rxi-1ms
 Signal Info : 20M x 0.18mm x 0.18um

Compound	R.T.	Response	Conc Units

System Monitoring Compounds			
9) S ortho-Terphenyl (SURR)	11.187	3717824	23.779 ug/ml
Spiked Amount	50.000	Recovery	= 47.56%
12) S 1-chlorooctadecane (S...	12.635	28078324	238.130 ug/mlm
Spiked Amount	50.000	Recovery	= 476.26%

Target Compounds

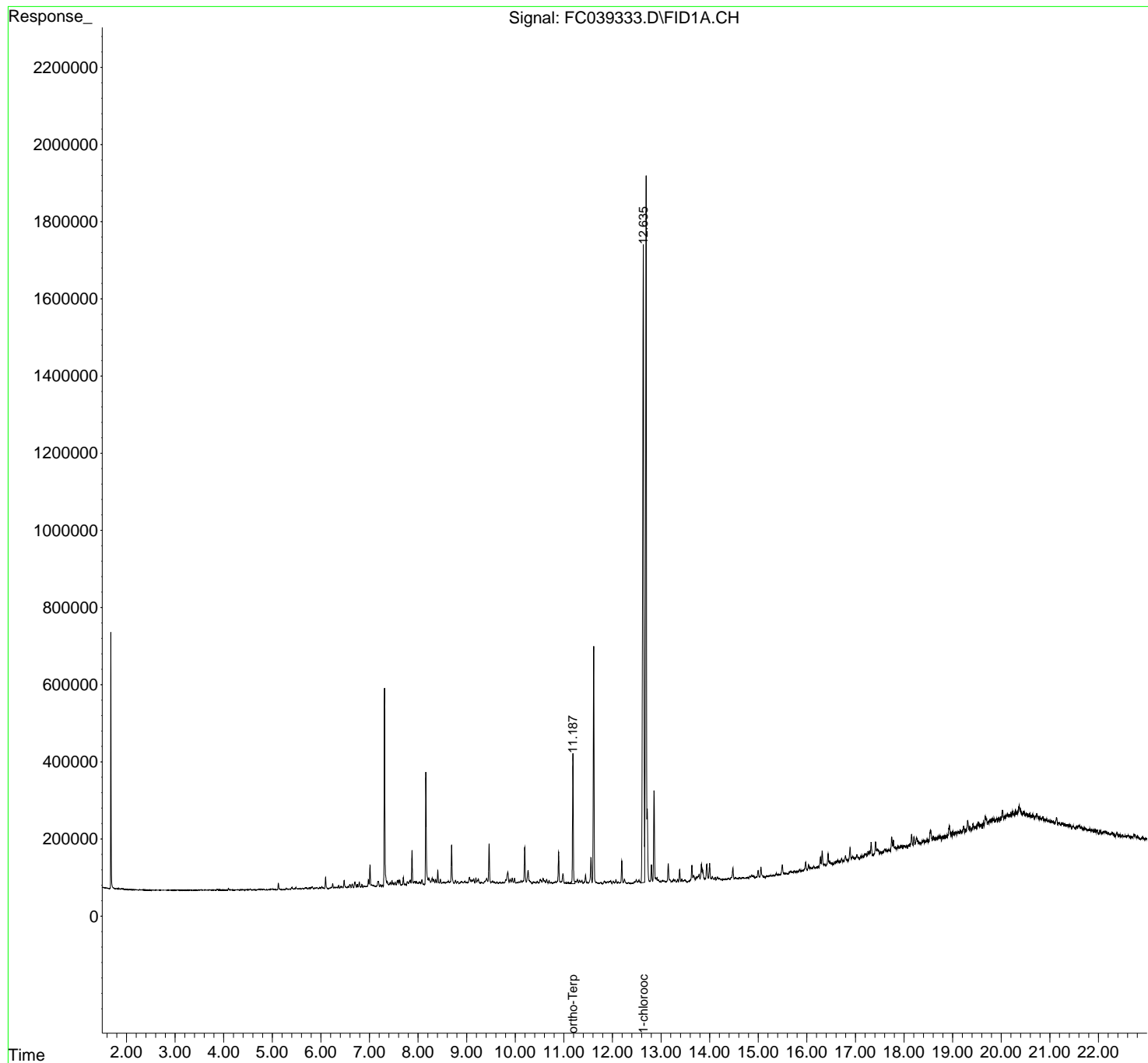
(f)=RT Delta > 1/2 Window

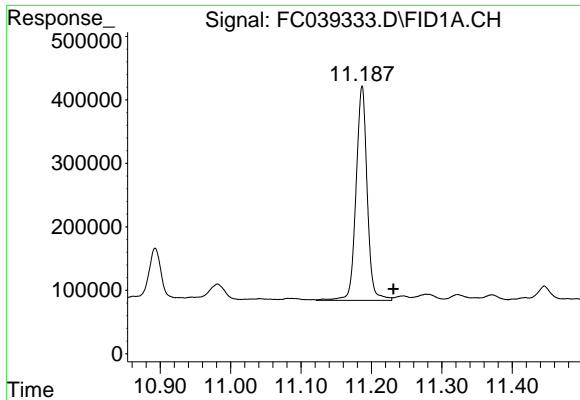
(m)=manual int.

Data Path : Z:\pestpcbsrv\HPCHEM1\FID_C\Data\FC022119AL\
Data File : FC039333.D
Signal(s) : FID1A.CH
Acq On : 21 Feb 2019 21:36
Operator : AJ\SJ
Sample : K1344-01
Misc :
ALS Vial : 18 Sample Multiplier: 1

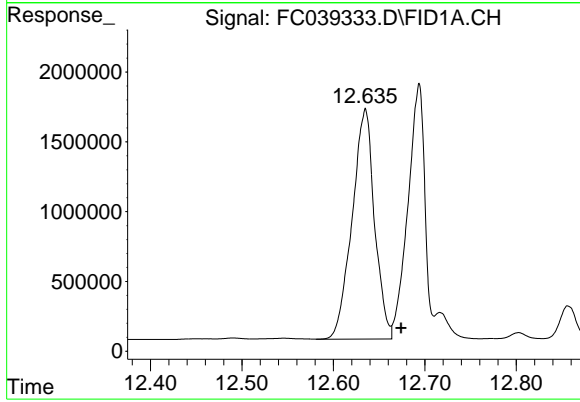
Integration File: sample.E
Quant Time: Feb 22 03:25:10 2019
Quant Method : Z:\pestpcbsrv\HPCHEM1\FID_C\Method\Alaphatic EPH 020619.M
Quant Title : GC Extractables
QLast Update : Thu Feb 07 03:09:34 2019
Response via : Initial Calibration
Integrator: ChemStation 6890 Scale Mode: Large solvent peaks clipped

Volume Inj. : 1 ul
Signal Phase : Rxi-1ms
Signal Info : 20M x 0.18mm x 0.18um





#9 ortho-Terphenyl (SURR)
R.T.: 11.187 min
Delta R.T.: -0.044 min
Response: 3717824
Conc: 23.78 ug/ml



#12 1-chlorooctadecane (SURR)
R.T.: 12.635 min
Delta R.T.: -0.039 min
Response: 28078324
Conc: 238.13 ug/ml m