

Data Path : Z:\pestpcbsrv\HPCHEM1\FID_C\Data\FC022124AL\
 Data File : FC065807.D
 Signal(s) : FID1A.ch
 Acq On : 21 Feb 2024 18:02
 Operator : YP/AJ
 Sample : P1537-11
 Misc :
 ALS Vial : 9 Sample Multiplier: 1

Instrument :
 FID_C
 ClientSampleId :

Integration File: autoint1.e
 Quant Time: Feb 22 03:33:03 2024
 Quant Method : Z:\pestpcbsrv\HPCHEM1\FID_C\Method\Aliphatic EPH 020824.M
 Quant Title : GC Extractables
 QLast Update : Thu Feb 08 13:26:08 2024
 Response via : Initial Calibration
 Integrator: ChemStation

Volume Inj. : 1 ul
 Signal Phase : Rxi-1ms
 Signal Info : 20M x 0.18mm x 0.18um

Compound	R.T.	Response	Conc Units

System Monitoring Compounds			
9) S ortho-Terphenyl (SURR)	11.499	6137385	35.780 ug/ml
Spiked Amount	50.000	Recovery	= 71.56%
12) S 1-chlorooctadecane (S...	12.929	4801663	38.154 ug/ml
Spiked Amount	50.000	Recovery	= 76.31%
Target Compounds			
6) T n-Tetradecane (C14)	8.154	14518	0.098 ug/ml
10) T n-Eicosane (C20)	12.485	40910	0.272 ug/ml
13) T n-Docosane (C22)	13.610f	104137	0.702 ug/ml
14) T n-Tetracosane (C24)	14.783	529359	3.560 ug/ml
16) T n-Octacosane (C28)	16.690	441082	3.006 ug/ml
17) T n-Tricontane (C30)	17.616	69132	0.461 ug/ml
18) T n-Dotriacontane (C32)	18.444	135015	0.913 ug/ml
19) T n-Tetratriacontane (C34)	19.228	161154	1.112 ug/ml
20) T n-Hexatriacontane (C36)	19.961	379971	2.677 ug/ml
21) T n-Octatriacontane (C38)	20.675	791519	5.592 ug/ml
22) T n-Tetracontane (C40)	21.551	62446	0.448 ug/ml

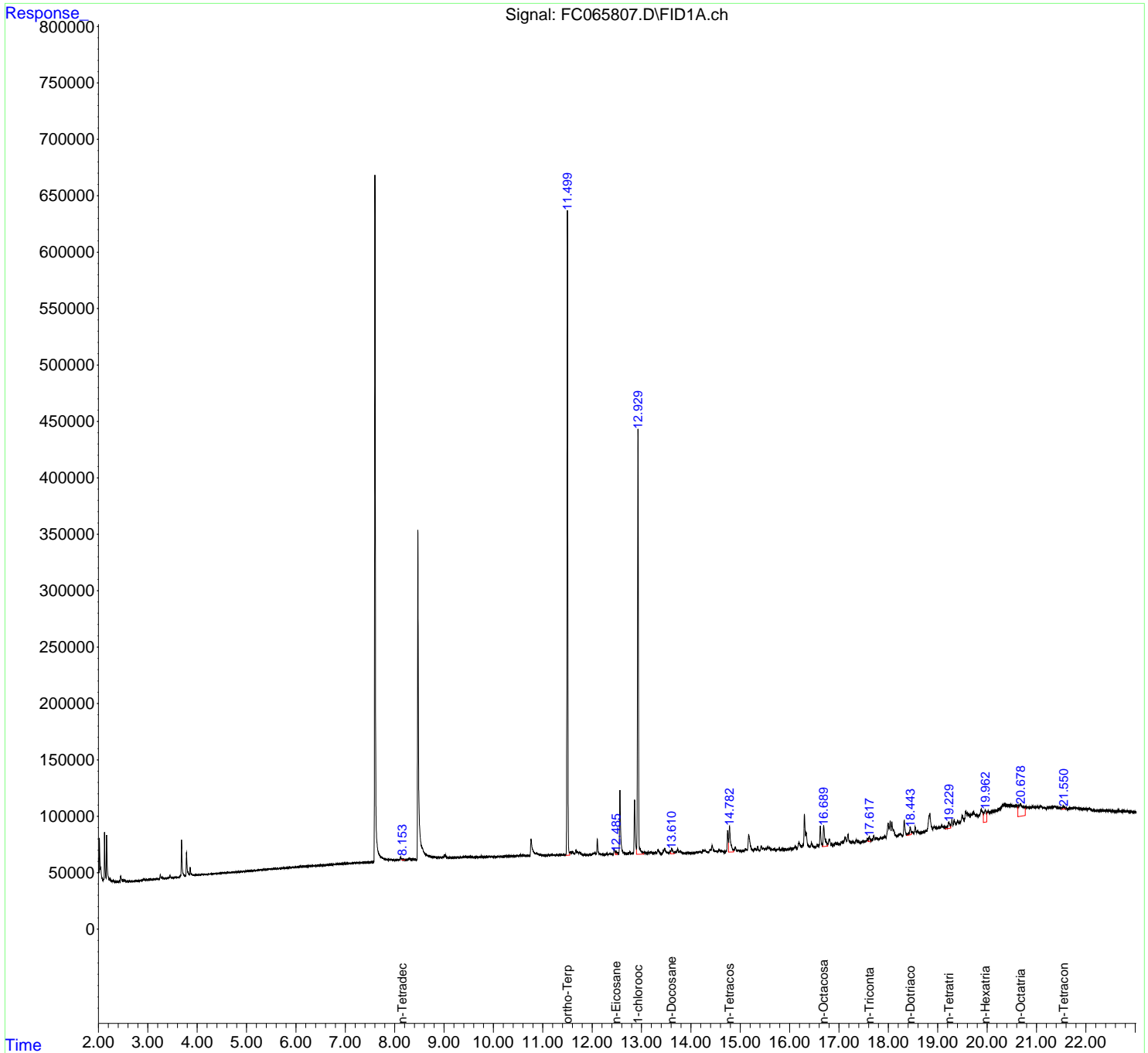
(f)=RT Delta > 1/2 Window (m)=manual int.

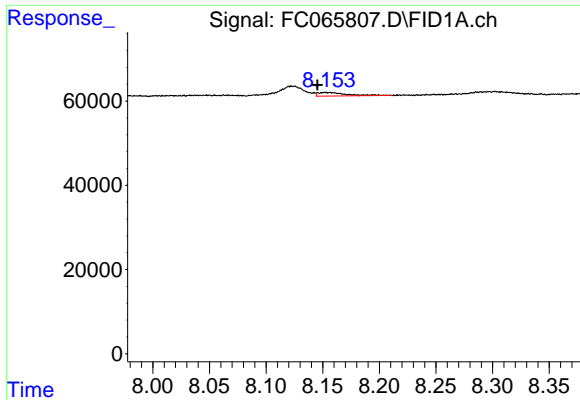
Data Path : Z:\pestpcbsrv\HPCHEM1\FID_C\Data\FC022124AL\
 Data File : FC065807.D
 Signal(s) : FID1A.ch
 Acq On : 21 Feb 2024 18:02
 Operator : YP/AJ
 Sample : P1537-11
 Misc :
 ALS Vial : 9 Sample Multiplier: 1

Instrument :
 FID_C
 ClientSampleId :

Integration File: autoint1.e
 Quant Time: Feb 22 03:33:03 2024
 Quant Method : Z:\pestpcbsrv\HPCHEM1\FID_C\Method\Aliphatic EPH 020824.M
 Quant Title : GC Extractables
 QLast Update : Thu Feb 08 13:26:08 2024
 Response via : Initial Calibration
 Integrator: ChemStation

Volume Inj. : 1 ul
 Signal Phase : Rxi-1ms
 Signal Info : 20M x 0.18mm x 0.18um

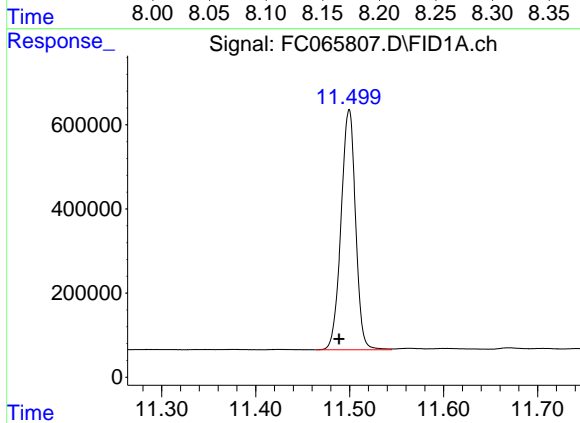




#6 n-Tetradecane (C14)

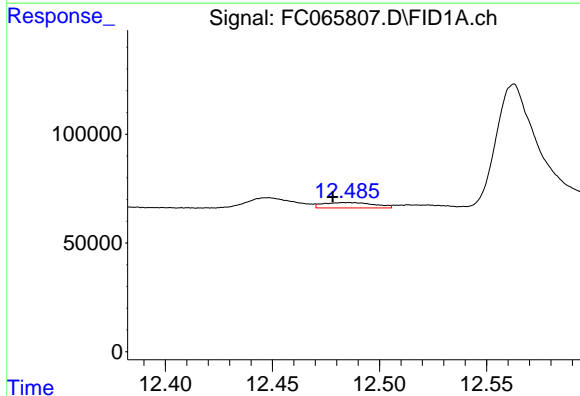
R.T.: 8.154 min
 Delta R.T.: 0.009 min
 Response: 14518
 Conc: 0.10 ug/ml

Instrument :
 FID_C
 ClientSampleId :



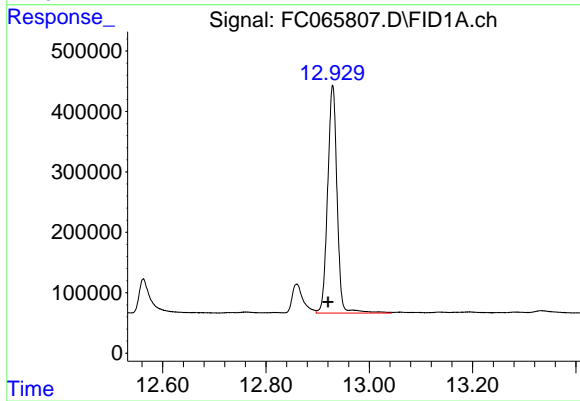
#9 ortho-Terphenyl (SURR)

R.T.: 11.499 min
 Delta R.T.: 0.011 min
 Response: 6137385
 Conc: 35.78 ug/ml



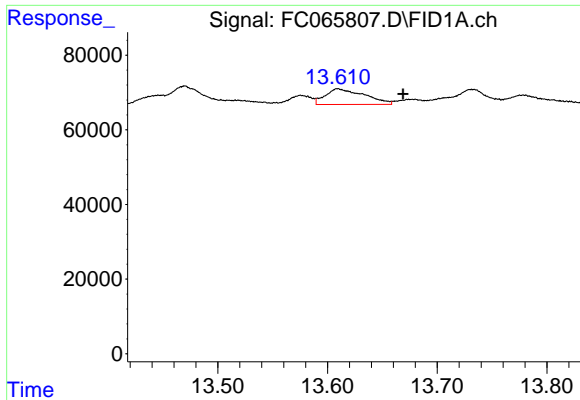
#10 n-Eicosane (C20)

R.T.: 12.485 min
 Delta R.T.: 0.007 min
 Response: 40910
 Conc: 0.27 ug/ml



#12 1-chlorooctadecane (SURR)

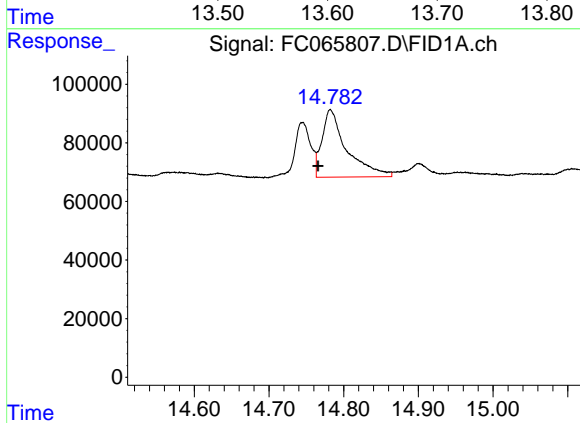
R.T.: 12.929 min
 Delta R.T.: 0.009 min
 Response: 4801663
 Conc: 38.15 ug/ml



#13 n-Docosane (C22)

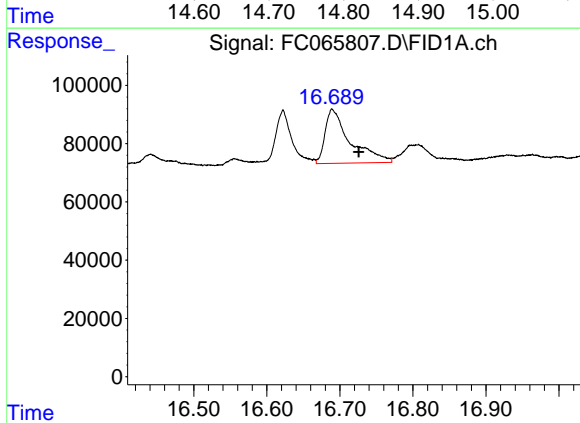
R.T.: 13.610 min
 Delta R.T.: -0.059 min
 Response: 104137
 Conc: 0.70 ug/ml

Instrument :
 FID_C
 ClientSampleId :



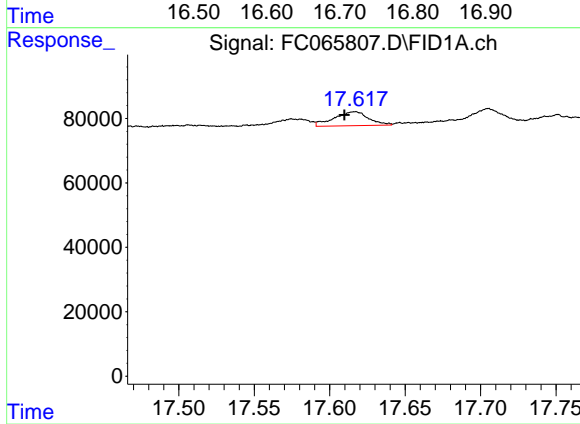
#14 n-Tetracosane (C24)

R.T.: 14.783 min
 Delta R.T.: 0.017 min
 Response: 529359
 Conc: 3.56 ug/ml



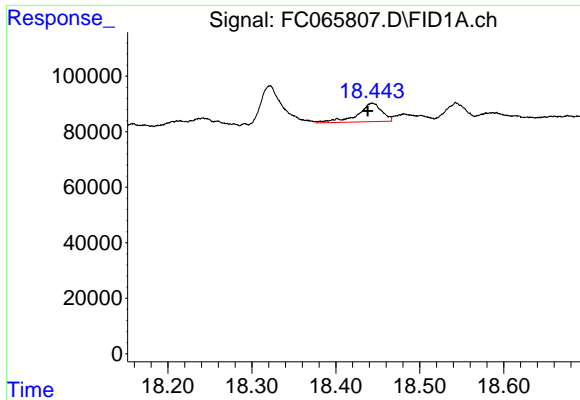
#16 n-Octacosane (C28)

R.T.: 16.690 min
 Delta R.T.: -0.036 min
 Response: 441082
 Conc: 3.01 ug/ml



#17 n-Tricontane (C30)

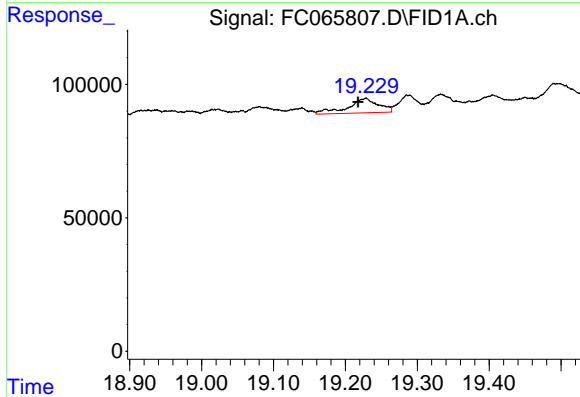
R.T.: 17.616 min
 Delta R.T.: 0.007 min
 Response: 69132
 Conc: 0.46 ug/ml



#18 n-Dotriacontane (C32)

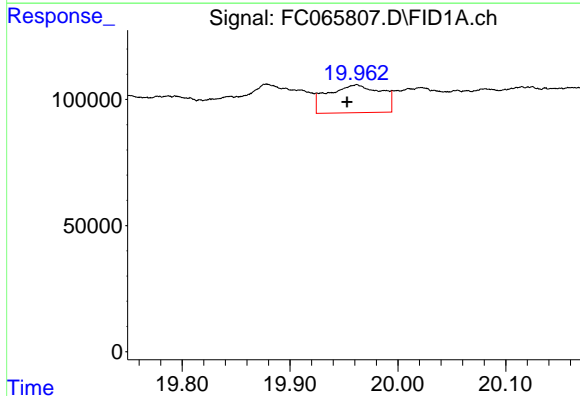
R.T.: 18.444 min
 Delta R.T.: 0.005 min
 Response: 135015
 Conc: 0.91 ug/ml

Instrument :
 FID_C
 ClientSampleId :



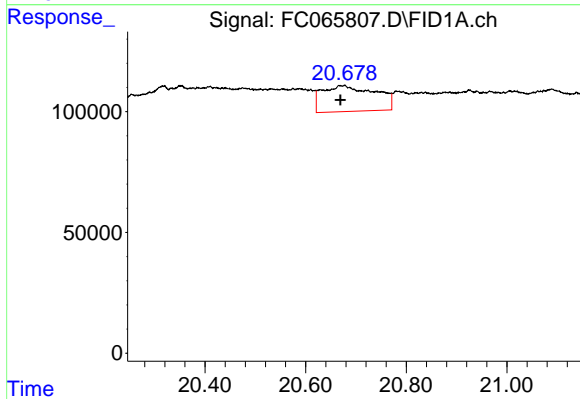
#19 n-Tetraatriacontane (C34)

R.T.: 19.228 min
 Delta R.T.: 0.010 min
 Response: 161154
 Conc: 1.11 ug/ml



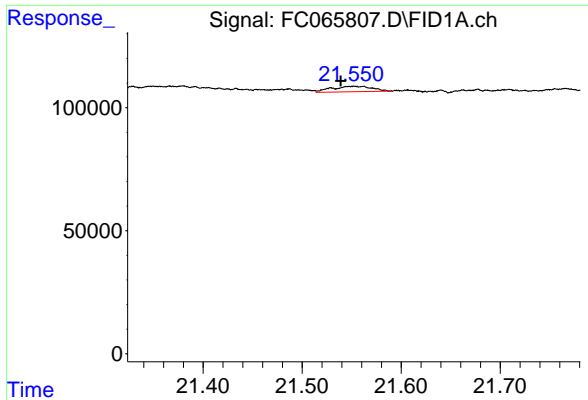
#20 n-Hexatriacontane (C36)

R.T.: 19.961 min
 Delta R.T.: 0.008 min
 Response: 379971
 Conc: 2.68 ug/ml



#21 n-Octatriacontane (C38)

R.T.: 20.675 min
 Delta R.T.: 0.006 min
 Response: 791519
 Conc: 5.59 ug/ml



#22 n-Tetracontane (C40)

R.T.: 21.551 min
Delta R.T.: 0.012 min
Response: 62446
Conc: 0.45 ug/ml

Instrument :
FID_C
ClientSampleId :