

Data Path : Z:\pestpcbsrv\HPCHEM1\FID\_C\Data\FC022219AL\  
Data File : FC039369.D  
Signal(s) : FID1A.CH  
Acq On : 22 Feb 2019 22:04  
Operator : AJ\SJ  
Sample : K1537-04DL 50X  
Misc :  
ALS Vial : 13 Sample Multiplier: 1

Instrument :  
FID\_C  
ClientSampleId :  
DRUM-1-2DL

Integration File: sample.E  
Quant Time: Feb 23 02:38:18 2019  
Quant Method : Z:\pestpcbsrv\HPCHEM1\FID\_C\Method\Alaphatic EPH 022219.M  
Quant Title : GC Extractables  
QLast Update : Sat Feb 23 02:09:53 2019  
Response via : Initial Calibration  
Integrator: ChemStation 6890 Scale Mode: Large solvent peaks clipped

Volume Inj. : 1 ul  
Signal Phase : Rxi-1ms  
Signal Info : 20M x 0.18mm x 0.18um

Compound	R.T.	Response	Conc Units
----------	------	----------	------------

-----  
System Monitoring Compounds

Target Compounds  
-----

(f)=RT Delta > 1/2 Window

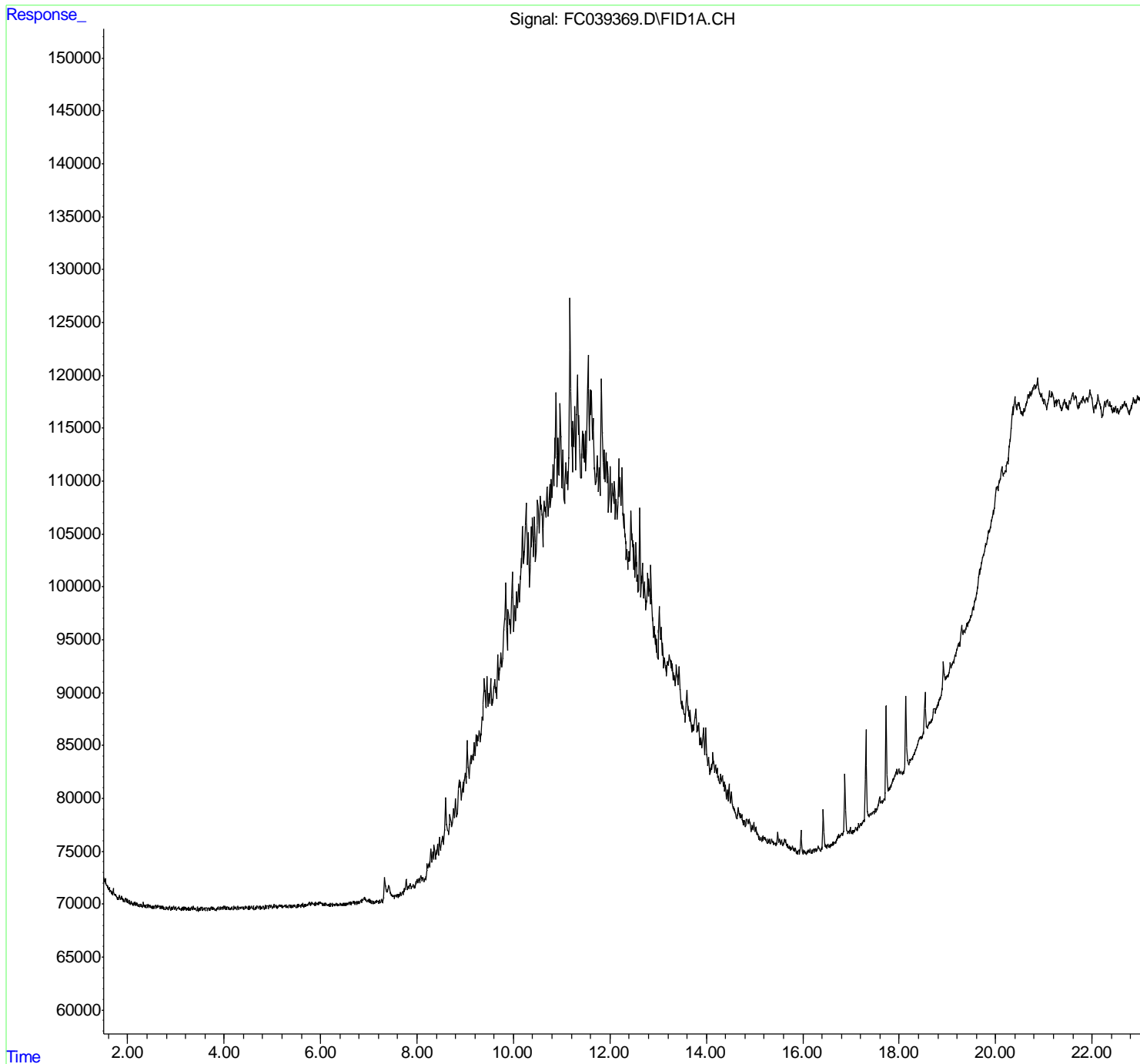
(m)=manual int.

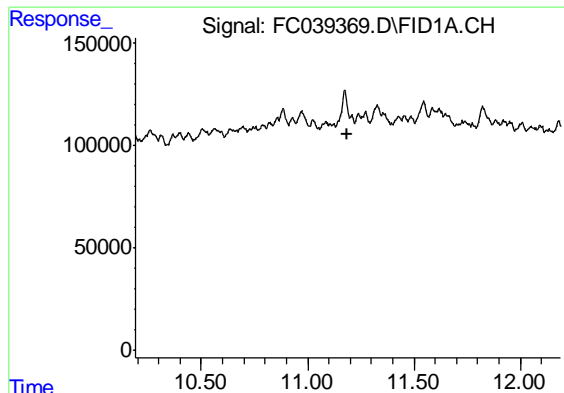
Data Path : Z:\pestpcbsrv\HPCHEM1\FID\_C\Data\FC022219AL\  
Data File : FC039369.D  
Signal(s) : FID1A.CH  
Acq On : 22 Feb 2019 22:04  
Operator : AJ\SJ  
Sample : K1537-04DL 50X  
Misc :  
ALS Vial : 13 Sample Multiplier: 1

Instrument :  
FID\_C  
ClientSampleId :  
DRUM-1-2DL

Integration File: sample.E  
Quant Time: Feb 23 02:38:18 2019  
Quant Method : Z:\pestpcbsrv\HPCHEM1\FID\_C\Method\Alaphatic EPH 022219.M  
Quant Title : GC Extractables  
QLast Update : Sat Feb 23 02:09:53 2019  
Response via : Initial Calibration  
Integrator: ChemStation 6890 Scale Mode: Large solvent peaks clipped

Volume Inj. : 1 ul  
Signal Phase : Rxi-1ms  
Signal Info : 20M x 0.18mm x 0.18um

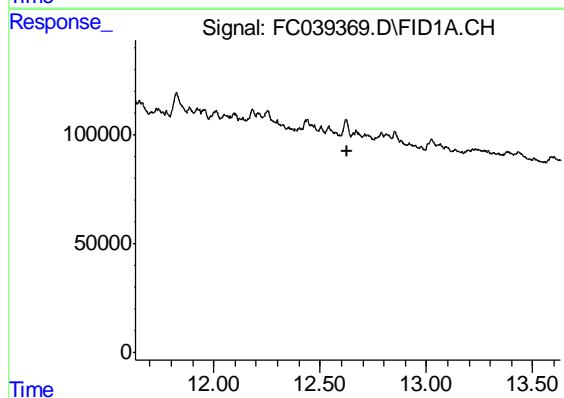




#9 ortho-Terphenyl (SURR)

R.T.: 0.000 min  
Exp R.T. : 11.190 min  
Response: 0  
Conc: N.D.

Instrument :  
FID\_C  
ClientSampleId :  
DRUM-1-2DL



#12 1-chlorooctadecane (SURR)

R.T.: 0.000 min  
Exp R.T. : 12.631 min  
Response: 0  
Conc: N.D.