

Data Path : Z:\pestpcbsrv\HPCHEM1\FID_C\Data\FC022420AL\
 Data File : FC045918.D
 Signal(s) : FID1A.CH
 Acq On : 24 Feb 2020 13:07
 Operator : DD\AJ
 Sample : L1635-02MS
 Misc :
 ALS Vial : 7 Sample Multiplier: 1

Instrument :
 FID_C
 ClientSampled :

Integration File: autoint1.e
 Quant Time: Feb 25 00:41:43 2020
 Quant Method : Z:\pestpcbsrv\HPCHEM1\FID_C\Method\Alaphatic EPH 022120.M
 Quant Title : GC Extractables
 QLast Update : Sat Feb 22 03:16:45 2020
 Response via : Initial Calibration
 Integrator: ChemStation 6890 Scale Mode: Large solvent peaks clipped

Volume Inj. : 1 ul
 Signal Phase : Rxi-1ms
 Signal Info : 20M x 0.18mm x 0.18um

Compound	R.T.	Response	Conc Units

System Monitoring Compounds			
12) S 1-chlorooctadecane (S... Spiked Amount 50.000	13.182	3615315 Recovery =	40.300 ug/ml 80.60%
Target Compounds			
1) T n-Nonane (C9)	3.532	2238630	22.208 ug/ml
2) T n-Decane (C10)	4.602	2809636	27.856 ug/ml
3) T A~Naphthalene (C11.7)	6.202	627513	5.651 ug/ml
4) T n-Dodecane (C12)	6.614	3266159	32.015 ug/ml
5) T A~2-methylnaphthalene...	7.255	405609	3.646 ug/ml
6) T n-Tetradecane (C14)	8.401	3738190	36.517 ug/ml
7) T n-Hexadecane (C16)	9.995	4119548	39.788 ug/ml
8) T n-Octadecane (C18)	11.431	4344281	41.326 ug/ml
10) T n-Eicosane (C20)	12.735	4363353	41.276 ug/ml
11) T n-Heneicosane (C21)	13.345	4366553	40.939 ug/ml
13) T n-Docosane (C22)	13.929	4378915	41.210 ug/ml
14) T n-Tetracosane (C24)	15.029	4348334	40.628 ug/ml
15) T n-Hexacosane (C26)	16.045	4270739	40.182 ug/ml
16) T n-Octacosane (C28)	16.991	4249209	40.586 ug/ml
17) T n-Tricontane (C30)	17.875	4186066	41.540 ug/ml
18) T n-Dotriacontane (C32)	18.704	3960666	46.278 ug/ml
19) T n-Tetratriacontane (C34)	19.483	3735523	51.469 ug/ml
20) T n-Hexatriacontane (C36)	20.219	3339528	49.381 ug/ml
21) T n-Octatriacontane (C38)	20.987	2949906	48.805 ug/ml
22) T n-Tetracontane (C40)	21.951	2873340	45.702 ug/ml

(f)=RT Delta > 1/2 Window

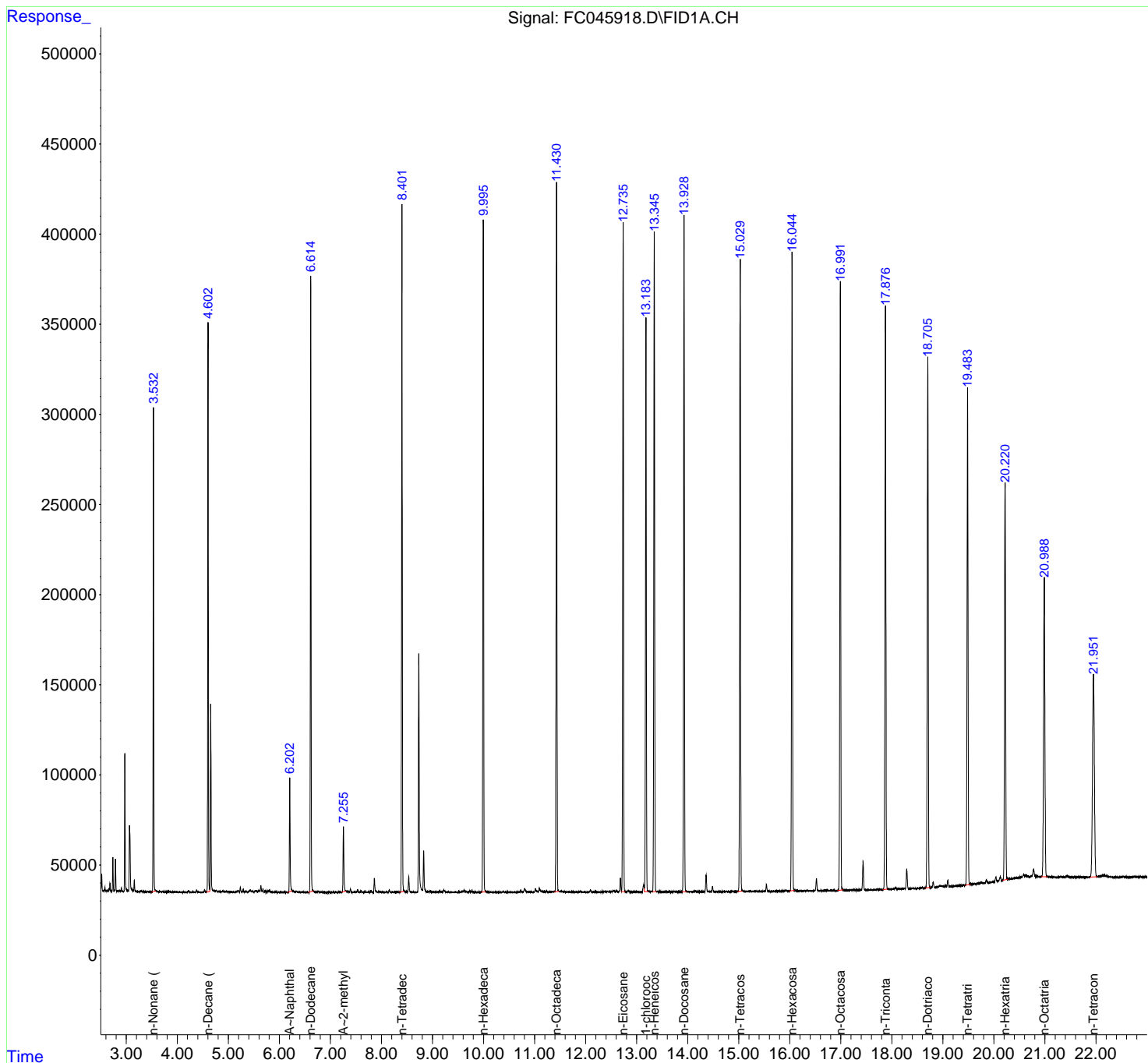
(m)=manual int.

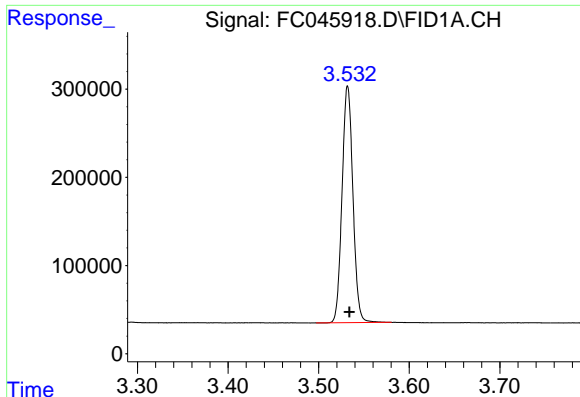
Data Path : Z:\pestpcbsrv\HPCHEM1\FID_C\Data\FC022420AL\
 Data File : FC045918.D
 Signal(s) : FID1A.CH
 Acq On : 24 Feb 2020 13:07
 Operator : DD\AJ
 Sample : L1635-02MS
 Misc :
 ALS Vial : 7 Sample Multiplier: 1

Instrument :
 FID_C
 ClientSampled :

Integration File: autoint1.e
 Quant Time: Feb 25 00:41:43 2020
 Quant Method : Z:\pestpcbsrv\HPCHEM1\FID_C\Method\Aliphatic EPH 022120.M
 Quant Title : GC Extractables
 QLast Update : Sat Feb 22 03:16:45 2020
 Response via : Initial Calibration
 Integrator: ChemStation 6890 Scale Mode: Large solvent peaks clipped

Volume Inj. : 1 ul
 Signal Phase : Rxi-1ms
 Signal Info : 20M x 0.18mm x 0.18um

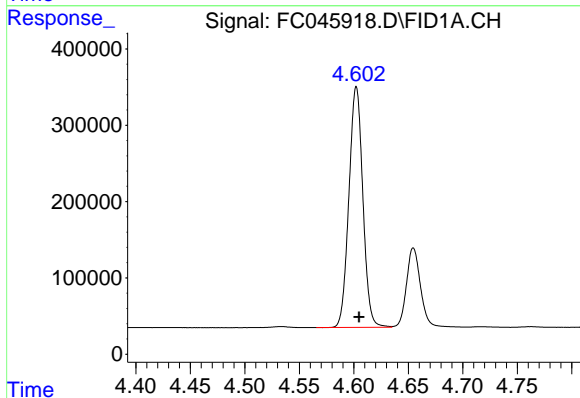




#1 n-Nonane (C9)

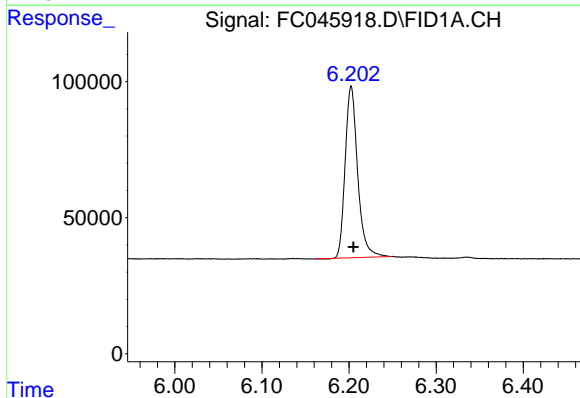
R.T.: 3.532 min
 Delta R.T.: -0.002 min
 Response: 2238630
 Conc: 22.21 ug/ml

Instrument :
 FID_C
 ClientSampled :



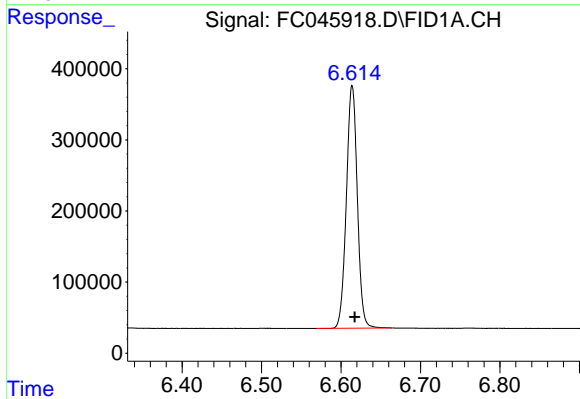
#2 n-Decane (C10)

R.T.: 4.602 min
 Delta R.T.: -0.002 min
 Response: 2809636
 Conc: 27.86 ug/ml



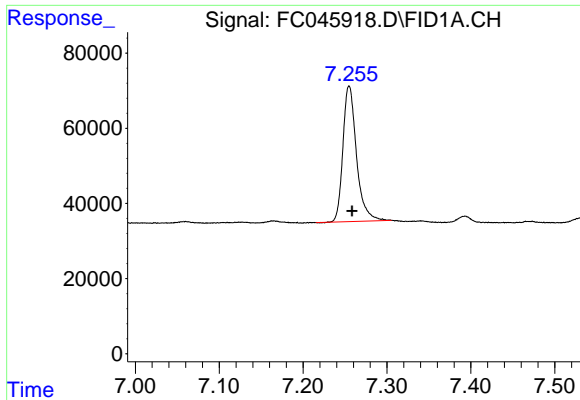
#3 A~Naphthalene (C11.7)

R.T.: 6.202 min
 Delta R.T.: -0.003 min
 Response: 627513
 Conc: 5.65 ug/ml



#4 n-Dodecane (C12)

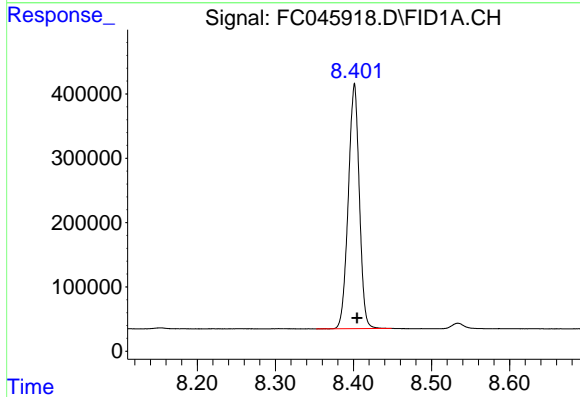
R.T.: 6.614 min
 Delta R.T.: -0.003 min
 Response: 3266159
 Conc: 32.01 ug/ml



#5 A~2-methylnaphthalene (C12.89)

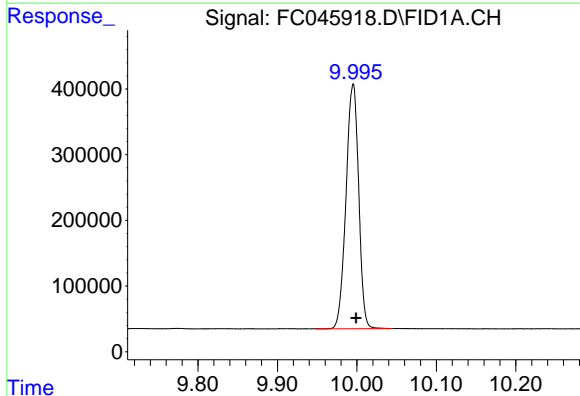
R.T.: 7.255 min
 Delta R.T.: -0.004 min
 Response: 405609
 Conc: 3.65 ug/ml

Instrument :
 FID_C
 ClientSampled :



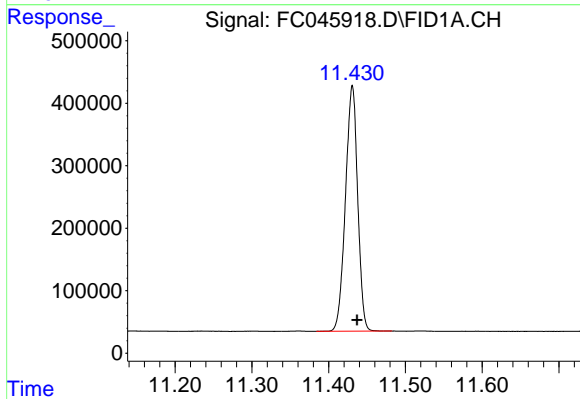
#6 n-Tetradecane (C14)

R.T.: 8.401 min
 Delta R.T.: -0.003 min
 Response: 3738190
 Conc: 36.52 ug/ml



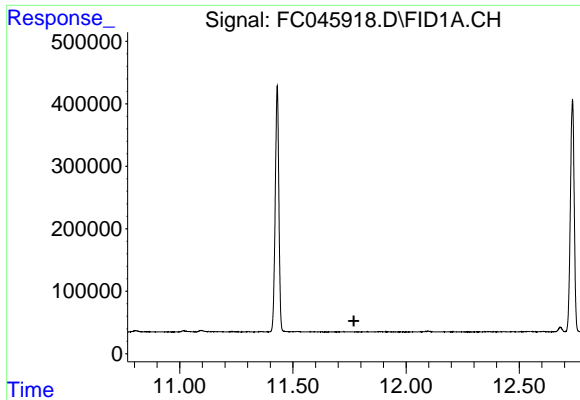
#7 n-Hexadecane (C16)

R.T.: 9.995 min
 Delta R.T.: -0.004 min
 Response: 4119548
 Conc: 39.79 ug/ml



#8 n-Octadecane (C18)

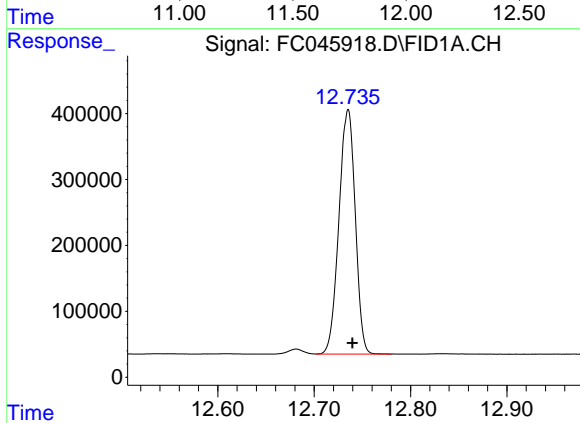
R.T.: 11.431 min
 Delta R.T.: -0.006 min
 Response: 4344281
 Conc: 41.33 ug/ml



#9 ortho-Terphenyl (SURR)

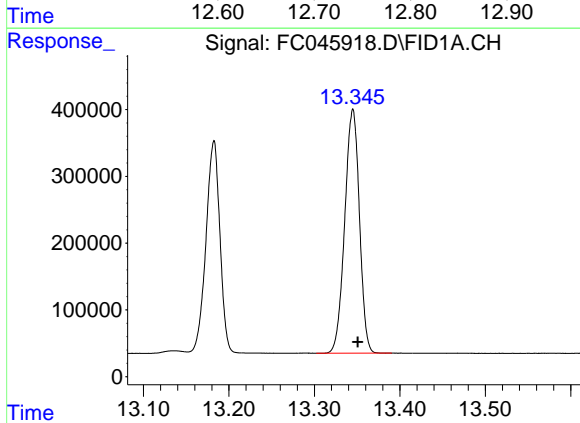
R.T.: 0.000 min
 Exp R.T.: 11.770 min
 Response: 0
 Conc: N.D.

Instrument :
 FID_C
 ClientSampled :



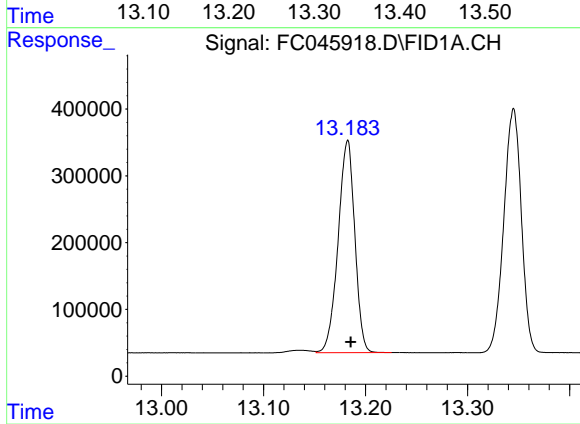
#10 n-Eicosane (C20)

R.T.: 12.735 min
 Delta R.T.: -0.004 min
 Response: 4363353
 Conc: 41.28 ug/ml



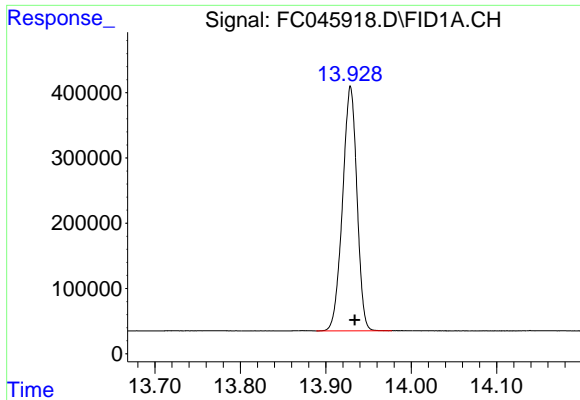
#11 n-Heneicosane (C21)

R.T.: 13.345 min
 Delta R.T.: -0.006 min
 Response: 4366553
 Conc: 40.94 ug/ml



#12 1-chlorooctadecane (SURR)

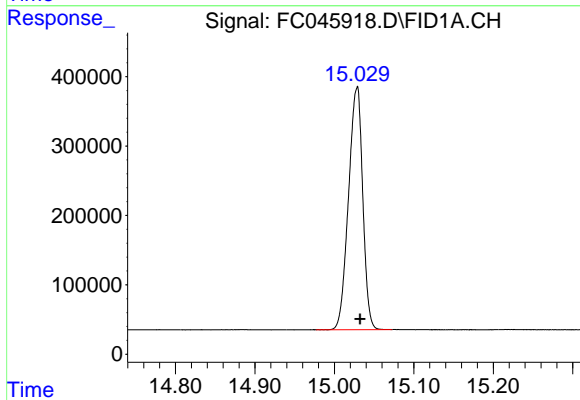
R.T.: 13.182 min
 Delta R.T.: -0.003 min
 Response: 3615315
 Conc: 40.30 ug/ml



#13 n-Docosane (C22)

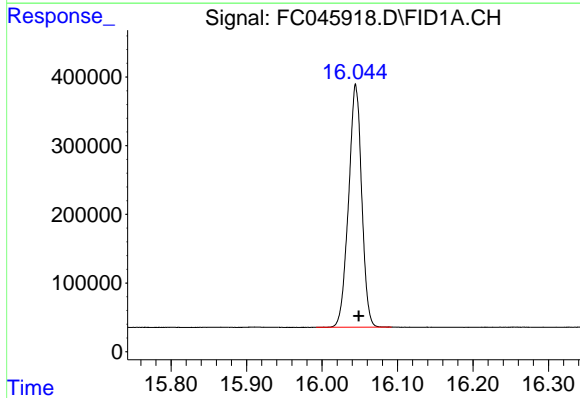
R.T.: 13.929 min
Delta R.T.: -0.005 min
Response: 4378915
Conc: 41.21 ug/ml

Instrument :
FID_C
ClientSampled :



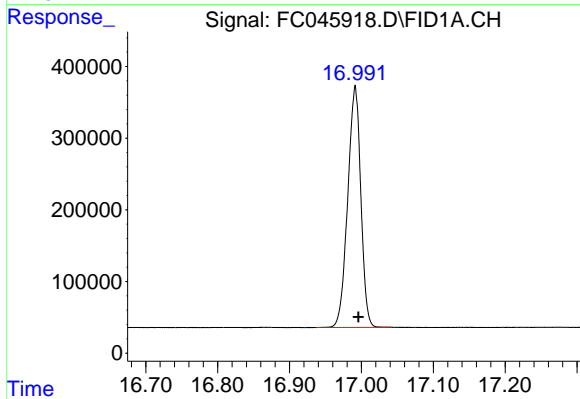
#14 n-Tetracosane (C24)

R.T.: 15.029 min
Delta R.T.: -0.004 min
Response: 4348334
Conc: 40.63 ug/ml



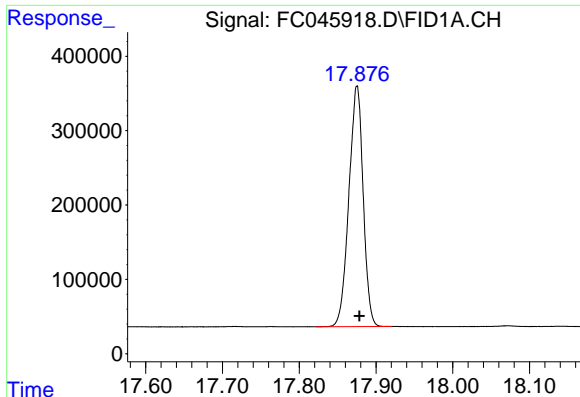
#15 n-Hexacosane (C26)

R.T.: 16.045 min
Delta R.T.: -0.004 min
Response: 4270739
Conc: 40.18 ug/ml



#16 n-Octacosane (C28)

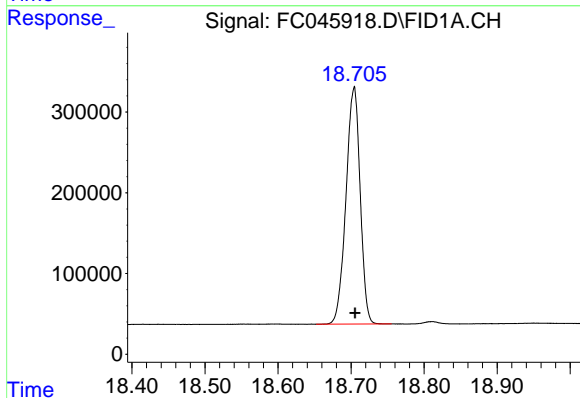
R.T.: 16.991 min
Delta R.T.: -0.004 min
Response: 4249209
Conc: 40.59 ug/ml



#17 n-Tricontane (C30)

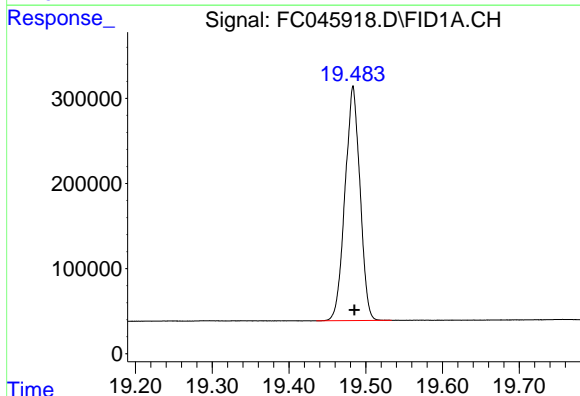
R.T.: 17.875 min
Delta R.T.: -0.003 min
Response: 4186066
Conc: 41.54 ug/ml

Instrument :
FID_C
ClientSampled :



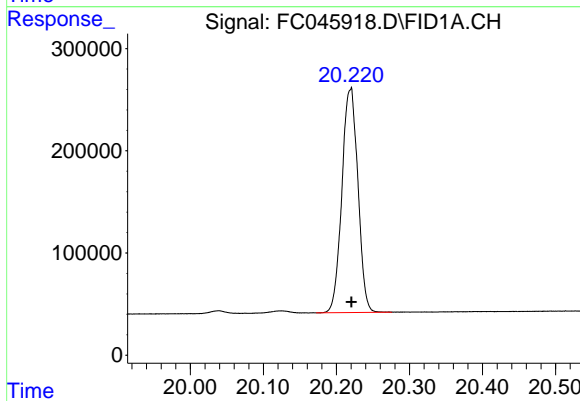
#18 n-Dotriacontane (C32)

R.T.: 18.704 min
Delta R.T.: -0.001 min
Response: 3960666
Conc: 46.28 ug/ml



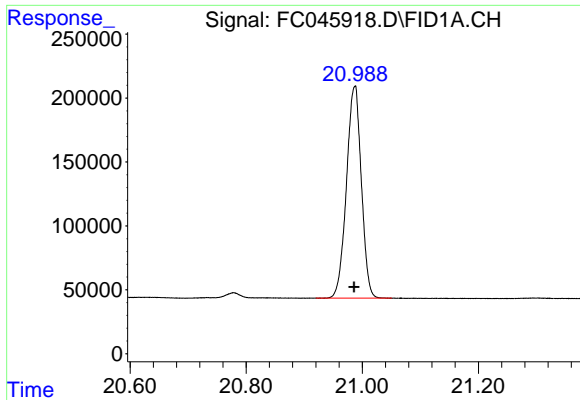
#19 n-Tetratriacontane (C34)

R.T.: 19.483 min
Delta R.T.: -0.002 min
Response: 3735523
Conc: 51.47 ug/ml



#20 n-Hexatriacontane (C36)

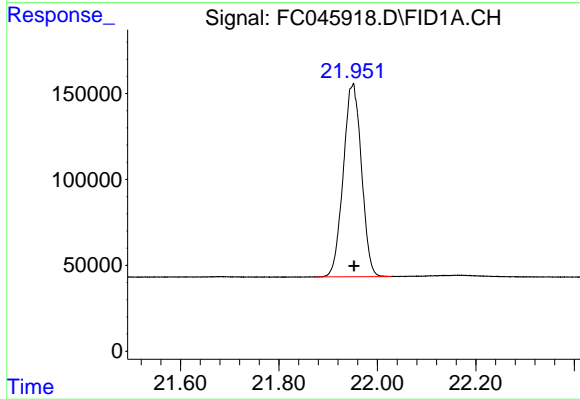
R.T.: 20.219 min
Delta R.T.: -0.001 min
Response: 3339528
Conc: 49.38 ug/ml



#21 n-Octatriacontane (C38)

R.T.: 20.987 min
Delta R.T.: 0.001 min
Response: 2949906
Conc: 48.81 ug/ml

Instrument :
FID_C
ClientSampleId :



#22 n-Tetracontane (C40)

R.T.: 21.951 min
Delta R.T.: -0.002 min
Response: 2873340
Conc: 45.70 ug/ml