

Data Path : Z:\pestpcbsrv\HPCHEM1\FID_C\Data\FC022723AL\
Data File : FC063037.D
Signal(s) : FID1A.ch
Acq On : 27 Feb 2023 21:25
Operator : YP/AJ
Sample : I.BLK
Misc :
ALS Vial : 1 Sample Multiplier: 1

Integration File: autoint1.e
Quant Time: Feb 28 03:20:36 2023
Quant Method : Z:\pestpcbsrv\HPCHEM1\FID_C\Method\Aliphatic EPH 022223.M
Quant Title : GC Extractables
QLast Update : Wed Feb 22 04:36:00 2023
Response via : Initial Calibration
Integrator: ChemStation

Volume Inj. : 1 u1
Signal Phase : Rxi-1ms
Signal Info : 20M x 0.18mm x 0.18um

Compound	R.T.	Response	Conc Units

System Monitoring Compounds			
Target Compounds			

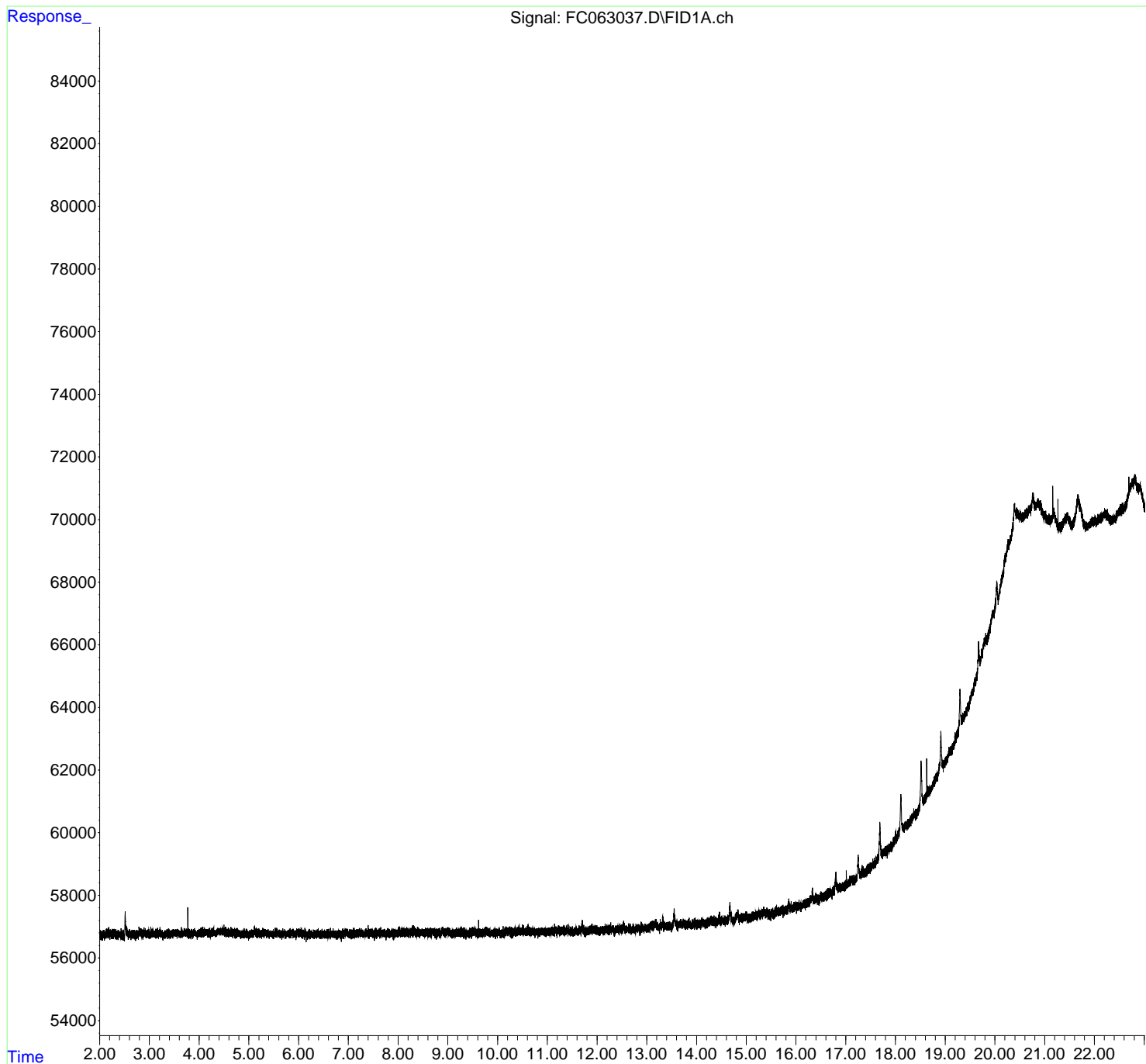
(f)=RT Delta > 1/2 Window

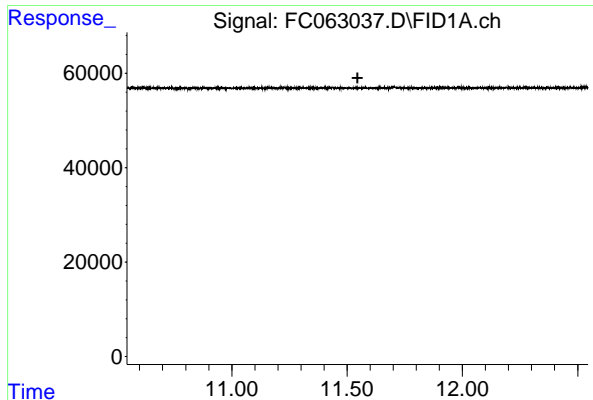
(m)=manual int.

Data Path : Z:\pestpcbsrv\HPCHEM1\FID_C\Data\FC022723AL\
Data File : FC063037.D
Signal(s) : FID1A.ch
Acq On : 27 Feb 2023 21:25
Operator : YP/AJ
Sample : I.BLK
Misc :
ALS Vial : 1 Sample Multiplier: 1

Integration File: autoint1.e
Quant Time: Feb 28 03:20:36 2023
Quant Method : Z:\pestpcbsrv\HPCHEM1\FID_C\Method\Aliphatic EPH 022223.M
Quant Title : GC Extractables
QLast Update : Wed Feb 22 04:36:00 2023
Response via : Initial Calibration
Integrator: ChemStation

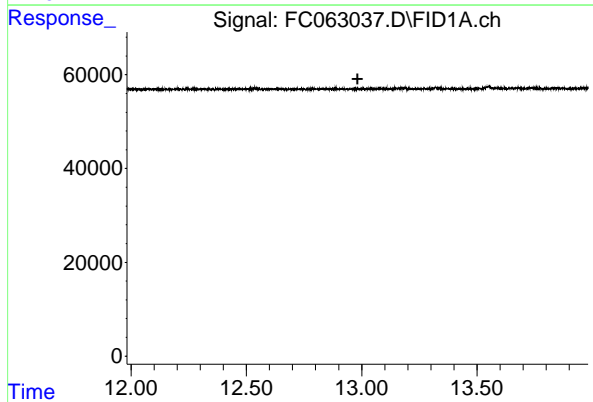
Volume Inj. : 1 ul
Signal Phase : Rxi-1ms
Signal Info : 20M x 0.18mm x 0.18um





#9 ortho-Terphenyl (SURR)

R.T.: 0.000 min
Exp R.T. : 11.545 min
Response: 0
Conc: N.D.



#12 1-chlorooctadecane (SURR)

R.T.: 0.000 min
Exp R.T. : 12.982 min
Response: 0
Conc: N.D.