

Data Path : Z:\pestpcbsrv\HPCHEM1\FID_C\Data\FC022724AL\
 Data File : FC065890.D
 Signal(s) : FID1A.ch
 Acq On : 27 Feb 2024 14:13
 Operator : YP/AJ
 Sample : I.BLK
 Misc :
 ALS Vial : 1 Sample Multiplier: 1

Instrument :
 FID_C
 ClientSampleId :
 I.BLK

Integration File: autoint1.e
 Quant Time: Feb 28 01:08:31 2024
 Quant Method : Z:\pestpcbsrv\HPCHEM1\FID_C\Method\Aliphatic EPH 020824.M
 Quant Title : GC Extractables
 QLast Update : Thu Feb 08 13:26:08 2024
 Response via : Initial Calibration
 Integrator: ChemStation

Volume Inj. : 1 ul
 Signal Phase : Rxi-1ms
 Signal Info : 20M x 0.18mm x 0.18um

Compound	R.T.	Response	Conc Units

System Monitoring Compounds			
Target Compounds			

(f)=RT Delta > 1/2 Window

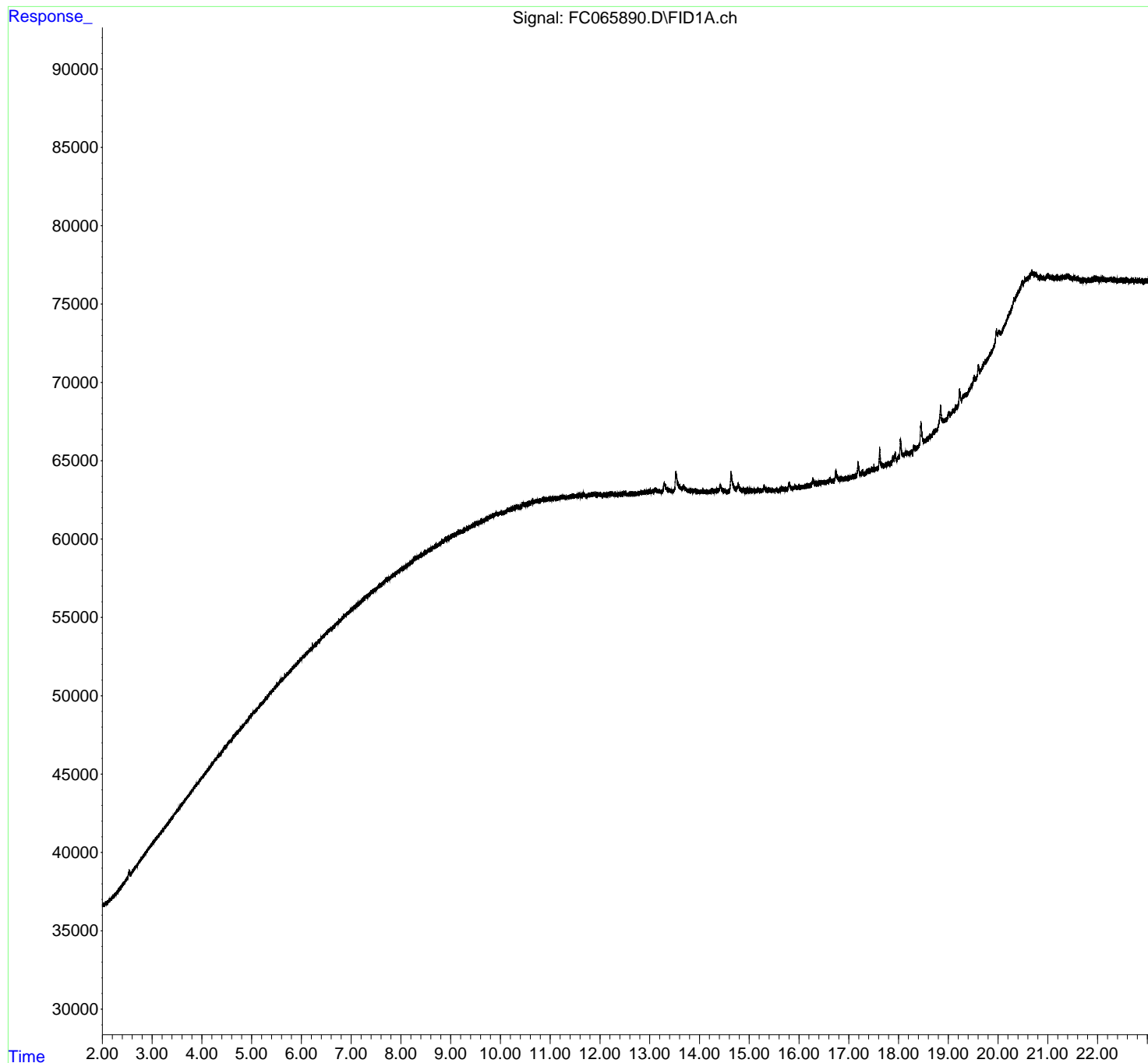
(m)=manual int.

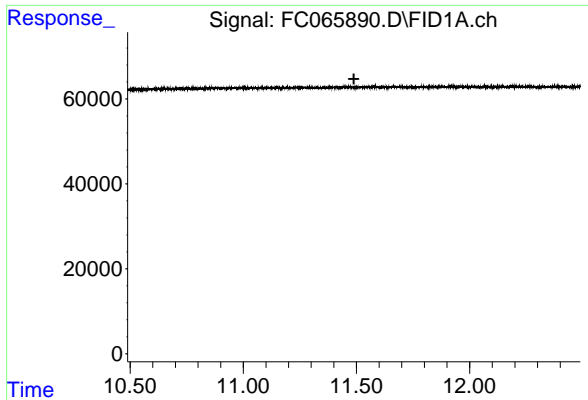
Data Path : Z:\pestpcbsrv\HPCHEM1\FID_C\Data\FC022724AL\
Data File : FC065890.D
Signal(s) : FID1A.ch
Acq On : 27 Feb 2024 14:13
Operator : YP/AJ
Sample : I.BLK
Misc :
ALS Vial : 1 Sample Multiplier: 1

Instrument :
FID_C
ClientSampleId :
I.BLK

Integration File: autoint1.e
Quant Time: Feb 28 01:08:31 2024
Quant Method : Z:\pestpcbsrv\HPCHEM1\FID_C\Method\Aliphatic EPH 020824.M
Quant Title : GC Extractables
QLast Update : Thu Feb 08 13:26:08 2024
Response via : Initial Calibration
Integrator: ChemStation

Volume Inj. : 1 ul
Signal Phase : Rxi-1ms
Signal Info : 20M x 0.18mm x 0.18um

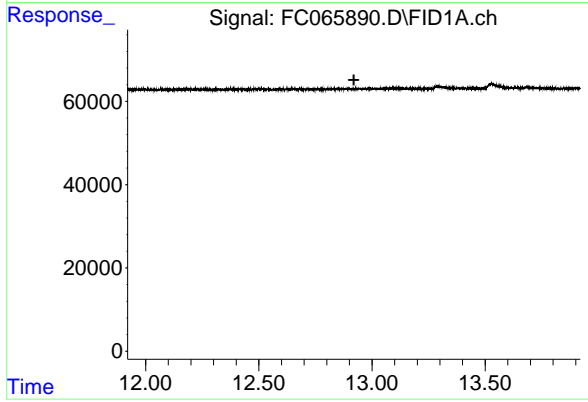




#9 ortho-Terphenyl (SURR)

R.T.: 0.000 min
 Exp R.T. : 11.489 min
 Response: 0
 Conc: N.D.

Instrument : FID_C
 ClientSampleId : I.BLK



#12 1-chlorooctadecane (SURR)

R.T.: 0.000 min
 Exp R.T. : 12.920 min
 Response: 0
 Conc: N.D.