

Data Path : Z:\pestpcbsrv\HPCHEM1\FID_C\Data\FC022819AL\
 Data File : FC039493.D
 Signal(s) : FID1A.CH
 Acq On : 28 Feb 2019 22:16
 Operator : AJ\SJ
 Sample : K1647-03MSD
 Misc :
 ALS Vial : 14 Sample Multiplier: 1

Integration File: sample.E
 Quant Time: Mar 01 03:45:36 2019
 Quant Method : Z:\pestpcbsrv\HPCHEM1\FID_C\Method\Alaphatic EPH 022219.M
 Quant Title : GC Extractables
 QLast Update : Mon Feb 25 18:21:16 2019
 Response via : Initial Calibration
 Integrator: ChemStation 6890 Scale Mode: Large solvent peaks clipped

Volume Inj. : 1 ul
 Signal Phase : Rxi-1ms
 Signal Info : 20M x 0.18mm x 0.18um

Compound	R.T.	Response	Conc Units
System Monitoring Compounds			
9) S ortho-Terphenyl (SURR)	11.167	4575302	27.201 ug/ml
Spiked Amount	50.000	Recovery =	54.40%
12) S 1-chlorooctadecane (S...)	12.614	3589977	28.460 ug/mlm
Spiked Amount	50.000	Recovery =	56.92%
Target Compounds			
1) T n-Nonane (C9)	3.040	3331933	27.761 ug/ml
2) T n-Decane (C10)	4.086	3886994	32.265 ug/ml
3) T A~Naphthalene (C11.7)	5.634	4541140	34.898 ug/ml
4) T n-Dodecane (C12)	6.082	4438869	35.928 ug/ml
5) T A~2-methylnaphthalene...	6.680	4655392	35.898 ug/ml
6) T n-Tetradecane (C14)	7.861	4791401	37.619 ug/ml
7) T n-Hexadecane (C16)	9.446	4714226	36.378 ug/ml
8) T n-Octadecane (C18)	10.877	4727475	35.143 ug/ml
10) T n-Eicosane (C20)	12.178	4756695	36.479 ug/ml
11) T n-Heneicosane (C21)	12.785	4898114	38.622 ug/ml
13) T n-Docosane (C22)	13.368	4748044	37.693 ug/mlm
14) T n-Tetracosane (C24)	14.465	4606674	36.858 ug/mlm
15) T n-Hexacosane (C26)	15.482	4895104	39.244 ug/mlm
16) T n-Octacosane (C28)	16.429	5103416	38.184 ug/mlm
17) T n-Tricontane (C30)	17.312	4843272	33.002 ug/mlm
18) T n-Dotriacontane (C32)	18.140	4800662	35.736 ug/mlm
19) T n-Tetratriacontane (C34)	18.917	5043444	44.340 ug/mlm
20) T n-Hexatriacontane (C36)	19.652	3729177	38.665 ug/mlm
21) T n-Octatriacontane (C38)	20.346	3510879	38.238 ug/mlm
22) T n-Tetracontane (C40)	21.110	3581578	39.463 ug/mlm

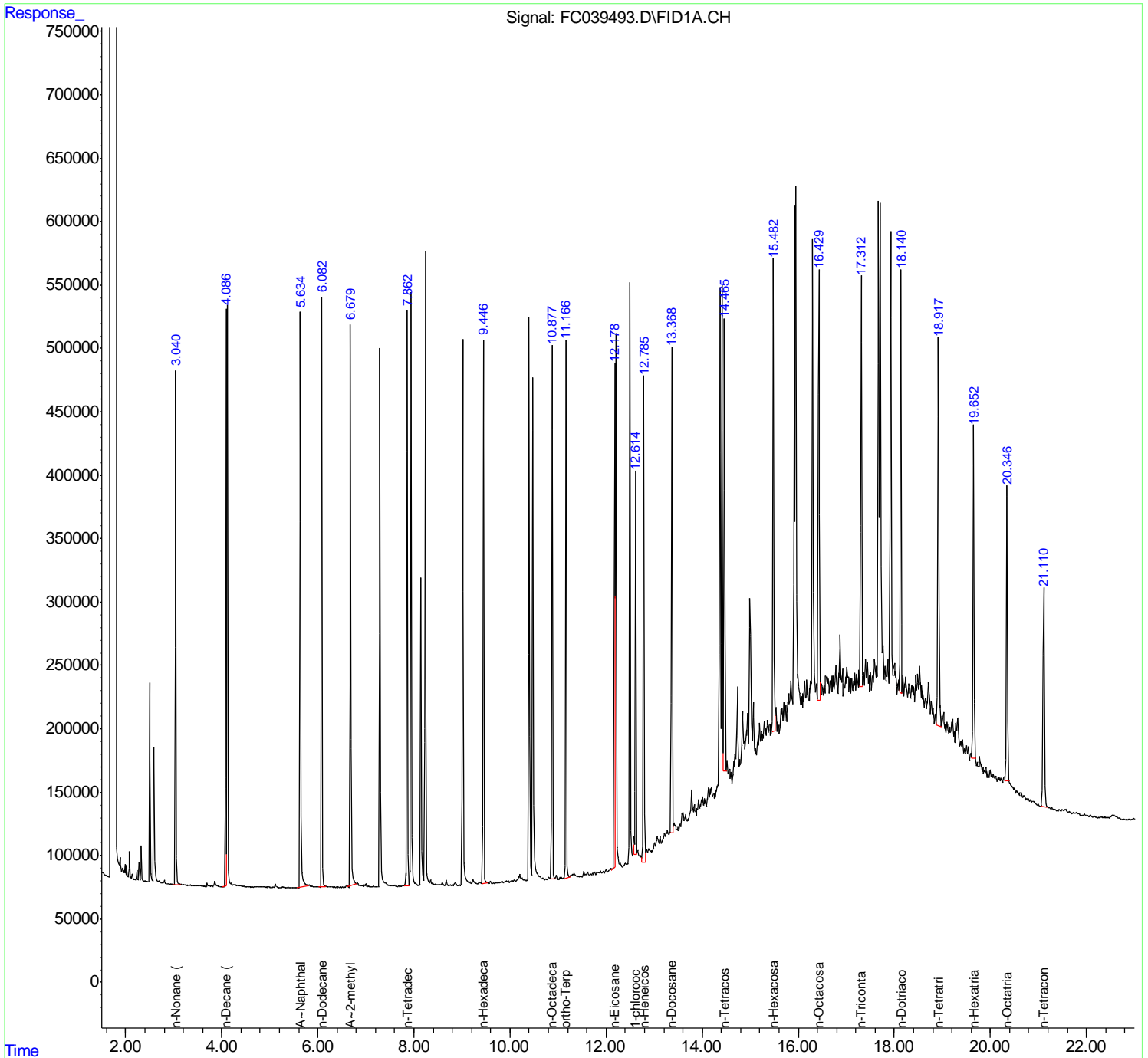
(f)=RT Delta > 1/2 Window

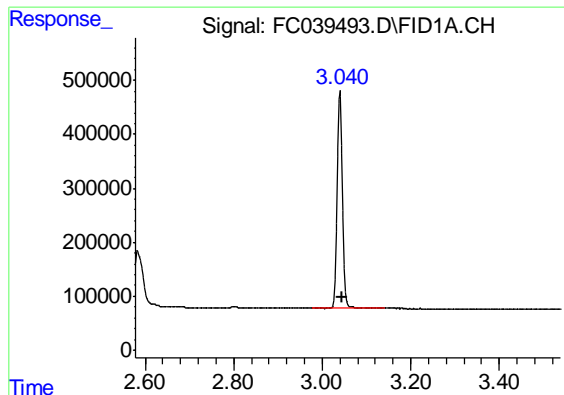
(m)=manual int.

Data Path : Z:\pestpcbsrv\HPCHEM1\FID_C\Data\FC022819AL\
 Data File : FC039493.D
 Signal(s) : FID1A.CH
 Acq On : 28 Feb 2019 22:16
 Operator : AJ\SJ
 Sample : K1647-03MSD
 Misc :
 ALS Vial : 14 Sample Multiplier: 1

Integration File: sample.E
 Quant Time: Mar 01 03:45:36 2019
 Quant Method : Z:\pestpcbsrv\HPCHEM1\FID_C\Method\Aliphatic EPH 022219.M
 Quant Title : GC Extractables
 QLast Update : Mon Feb 25 18:21:16 2019
 Response via : Initial Calibration
 Integrator: ChemStation 6890 Scale Mode: Large solvent peaks clipped

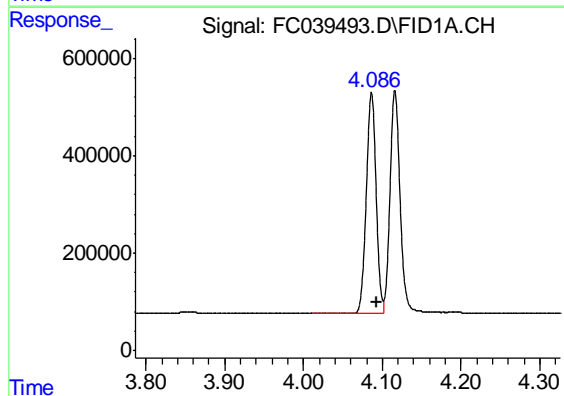
Volume Inj. : 1 ul
 Signal Phase : Rxi-1ms
 Signal Info : 20M x 0.18mm x 0.18um





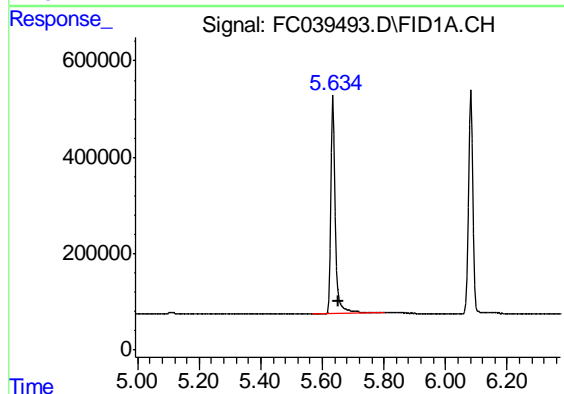
#1 n-Nonane (C9)

R.T.: 3.040 min
Delta R.T.: -0.005 min
Response: 3331933
Conc: 27.76 ug/ml



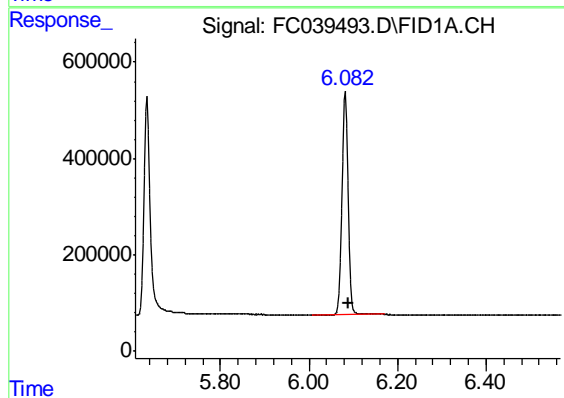
#2 n-Decane (C10)

R.T.: 4.086 min
Delta R.T.: -0.007 min
Response: 3886994
Conc: 32.26 ug/ml



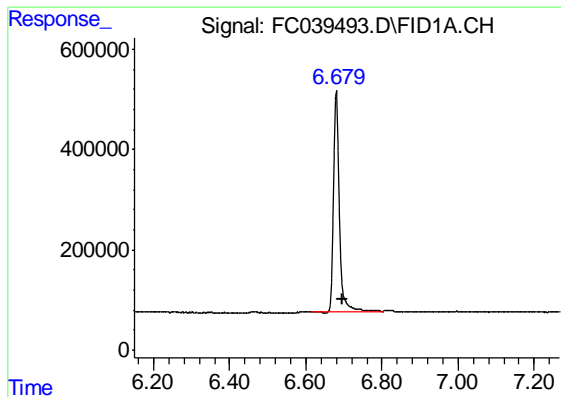
#3 A-Naphthalene (C11.7)

R.T.: 5.634 min
Delta R.T.: -0.017 min
Response: 4541140
Conc: 34.90 ug/ml



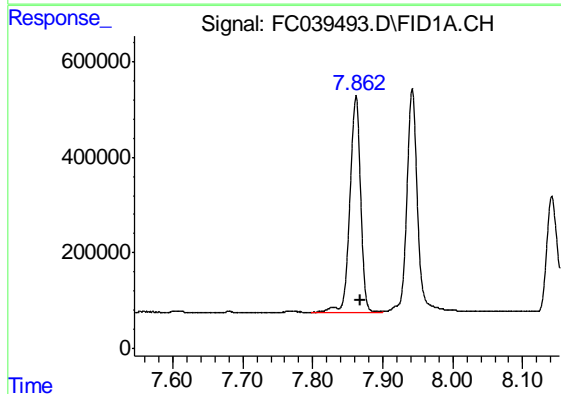
#4 n-Dodecane (C12)

R.T.: 6.082 min
Delta R.T.: -0.008 min
Response: 4438869
Conc: 35.93 ug/ml



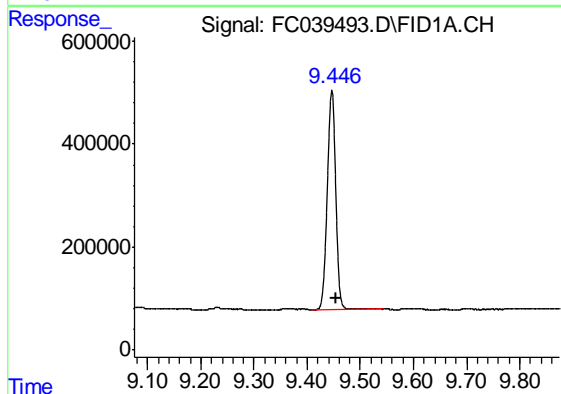
#5 A~2-methylnaphthalene (C12.89)

R.T.: 6.680 min
Delta R.T.: -0.017 min
Response: 4655392
Conc: 35.90 ug/ml



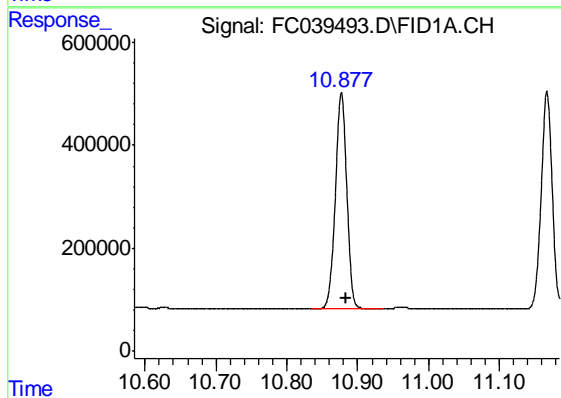
#6 n-Tetradecane (C14)

R.T.: 7.861 min
Delta R.T.: -0.007 min
Response: 4791401
Conc: 37.62 ug/ml



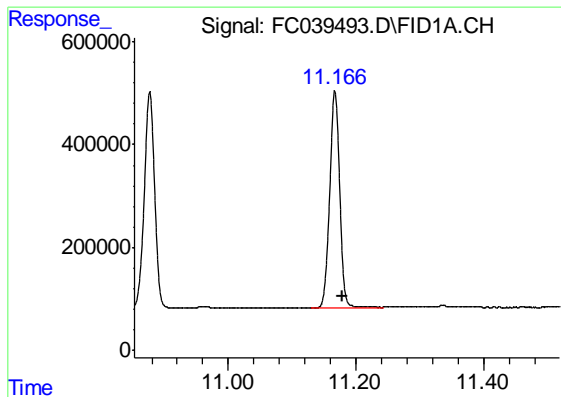
#7 n-Hexadecane (C16)

R.T.: 9.446 min
Delta R.T.: -0.008 min
Response: 4714226
Conc: 36.38 ug/ml



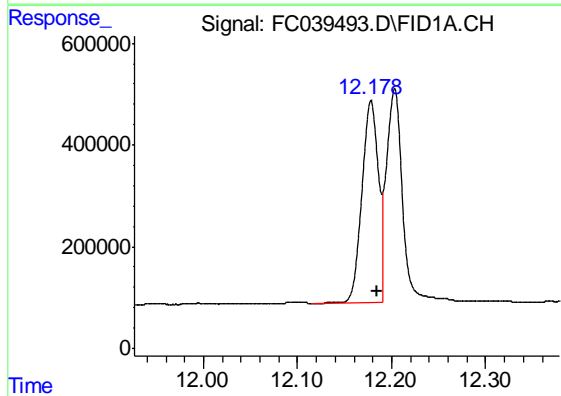
#8 n-Octadecane (C18)

R.T.: 10.877 min
Delta R.T.: -0.008 min
Response: 4727475
Conc: 35.14 ug/ml



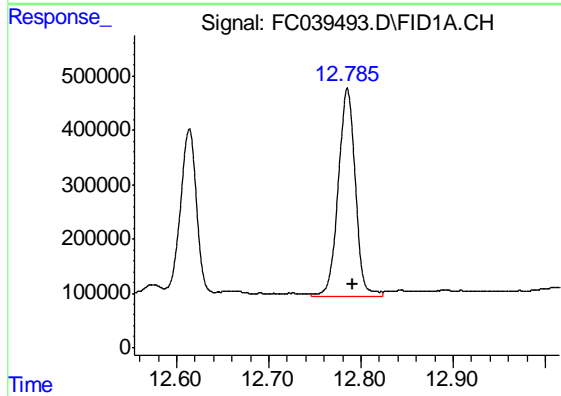
#9 ortho-Terphenyl (SURR)

R.T.: 11.167 min
Delta R.T.: -0.011 min
Response: 4575302
Conc: 27.20 ug/ml



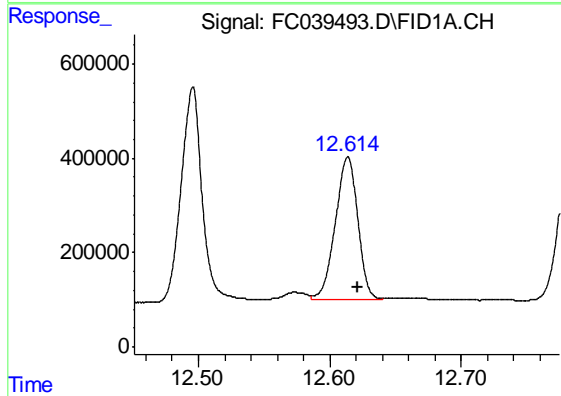
#10 n-Eicosane (C20)

R.T.: 12.178 min
Delta R.T.: -0.006 min
Response: 4756695
Conc: 36.48 ug/ml



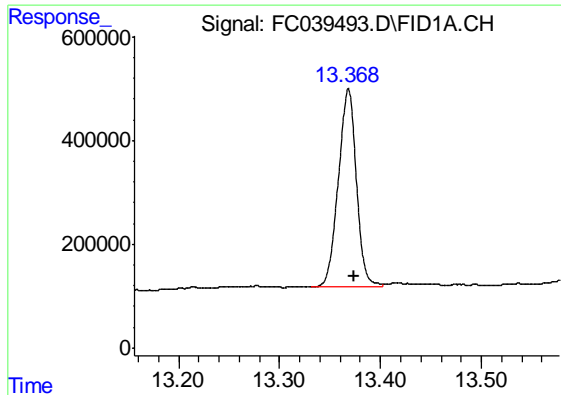
#11 n-Heneicosane (C21)

R.T.: 12.785 min
Delta R.T.: -0.006 min
Response: 4898114
Conc: 38.62 ug/ml

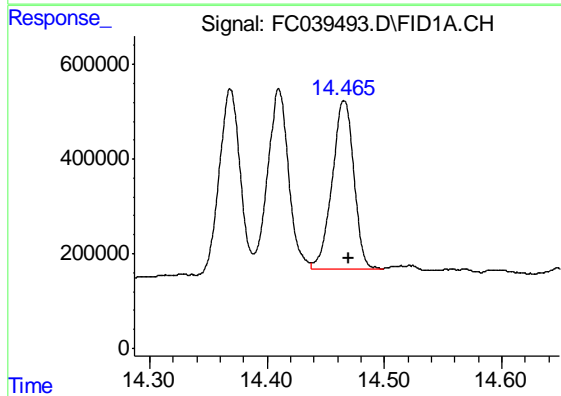


#12 1-chlorooctadecane (SURR)

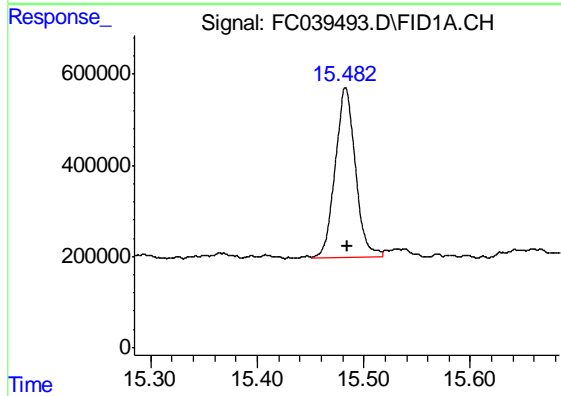
R.T.: 12.614 min
Delta R.T.: -0.008 min
Response: 3589977
Conc: 28.46 ug/ml m



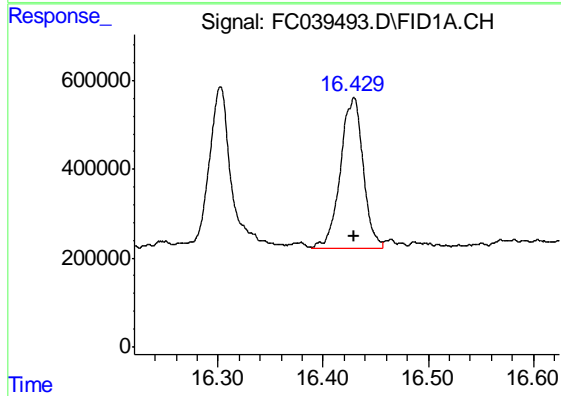
#13 n-Docosane (C22)
R.T.: 13.368 min
Delta R.T.: -0.006 min
Response: 4748044
Conc: 37.69 ug/ml m



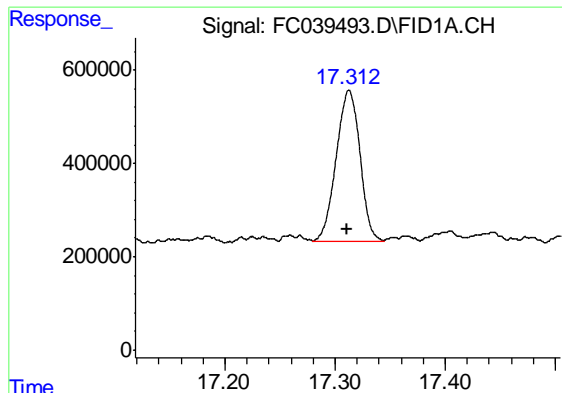
#14 n-Tetracosane (C24)
R.T.: 14.465 min
Delta R.T.: -0.005 min
Response: 4606674
Conc: 36.86 ug/ml m



#15 n-Hexacosane (C26)
R.T.: 15.482 min
Delta R.T.: -0.003 min
Response: 4895104
Conc: 39.24 ug/ml m

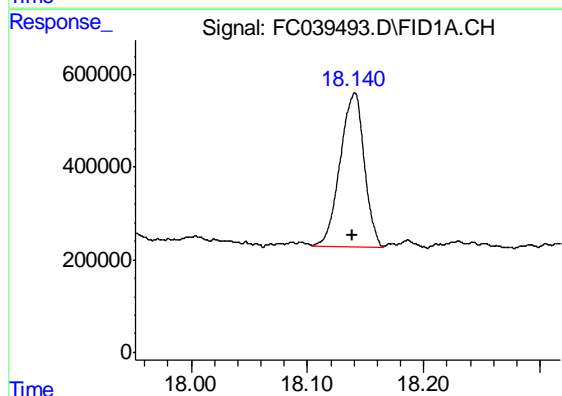


#16 n-Octacosane (C28)
R.T.: 16.429 min
Delta R.T.: 0.000 min
Response: 5103416
Conc: 38.18 ug/ml m



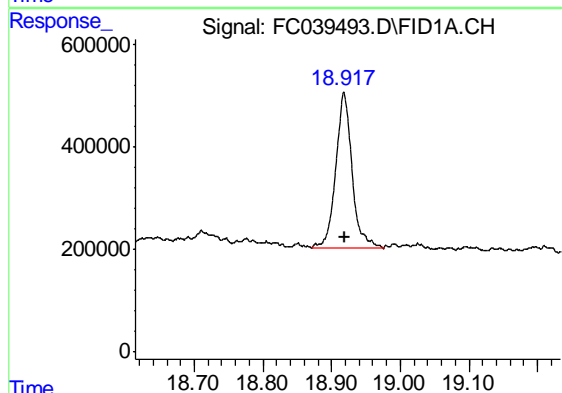
#17 n-Tricontane (C30)

R.T.: 17.312 min
Delta R.T.: 0.000 min
Response: 4843272
Conc: 33.00 ug/ml m



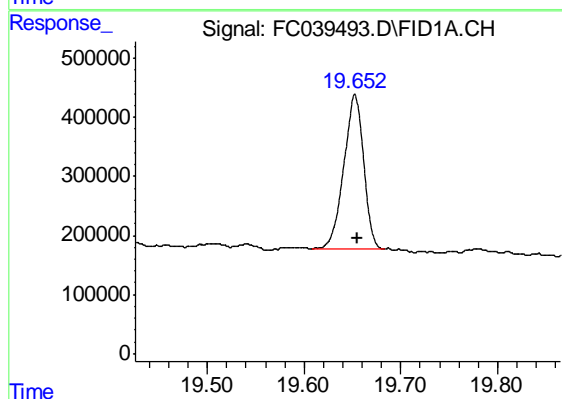
#18 n-Dotriacontane (C32)

R.T.: 18.140 min
Delta R.T.: 0.000 min
Response: 4800662
Conc: 35.74 ug/ml m



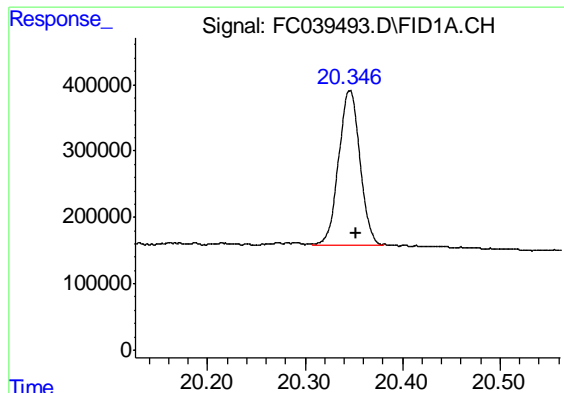
#19 n-Tetratriacontane (C34)

R.T.: 18.917 min
Delta R.T.: -0.001 min
Response: 5043444
Conc: 44.34 ug/ml m



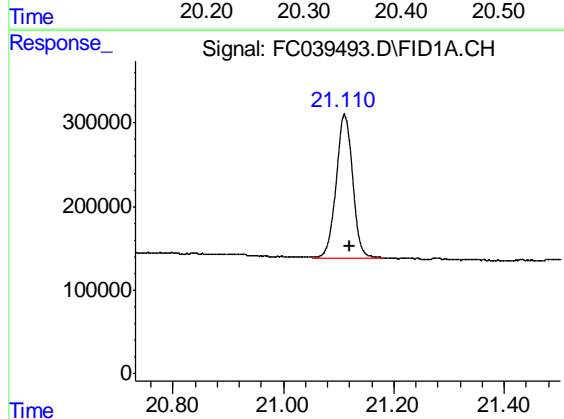
#20 n-Hexatriacontane (C36)

R.T.: 19.652 min
Delta R.T.: -0.003 min
Response: 3729177
Conc: 38.67 ug/ml m



#21 n-Octatriacontane (C38)

R.T.: 20.346 min
Delta R.T.: -0.007 min
Response: 3510879
Conc: 38.24 ug/ml m



#22 n-Tetracontane (C40)

R.T.: 21.110 min
Delta R.T.: -0.011 min
Response: 3581578
Conc: 39.46 ug/ml m