

Data Path : Z:\pestpcbsrv\HPCHEM1\FID_C\Data\FC022820AL\
 Data File : FC046010.D
 Signal(s) : FID1A.CH
 Acq On : 28 Feb 2020 21:10
 Operator : DD\AJ
 Sample : L1718-11
 Misc :
 ALS Vial : 12 Sample Multiplier: 1

Integration File: autoint1.e
 Quant Time: Feb 28 23:24:54 2020
 Quant Method : Z:\pestpcbsrv\HPCHEM1\FID_C\Method\Alaphatic EPH 022120.M
 Quant Title : GC Extractables
 QLast Update : Sat Feb 22 03:16:45 2020
 Response via : Initial Calibration
 Integrator: ChemStation 6890 Scale Mode: Large solvent peaks clipped

Volume Inj. : 1 ul
 Signal Phase : Rxi-1ms
 Signal Info : 20M x 0.18mm x 0.18um

Compound	R.T.	Response	Conc Units

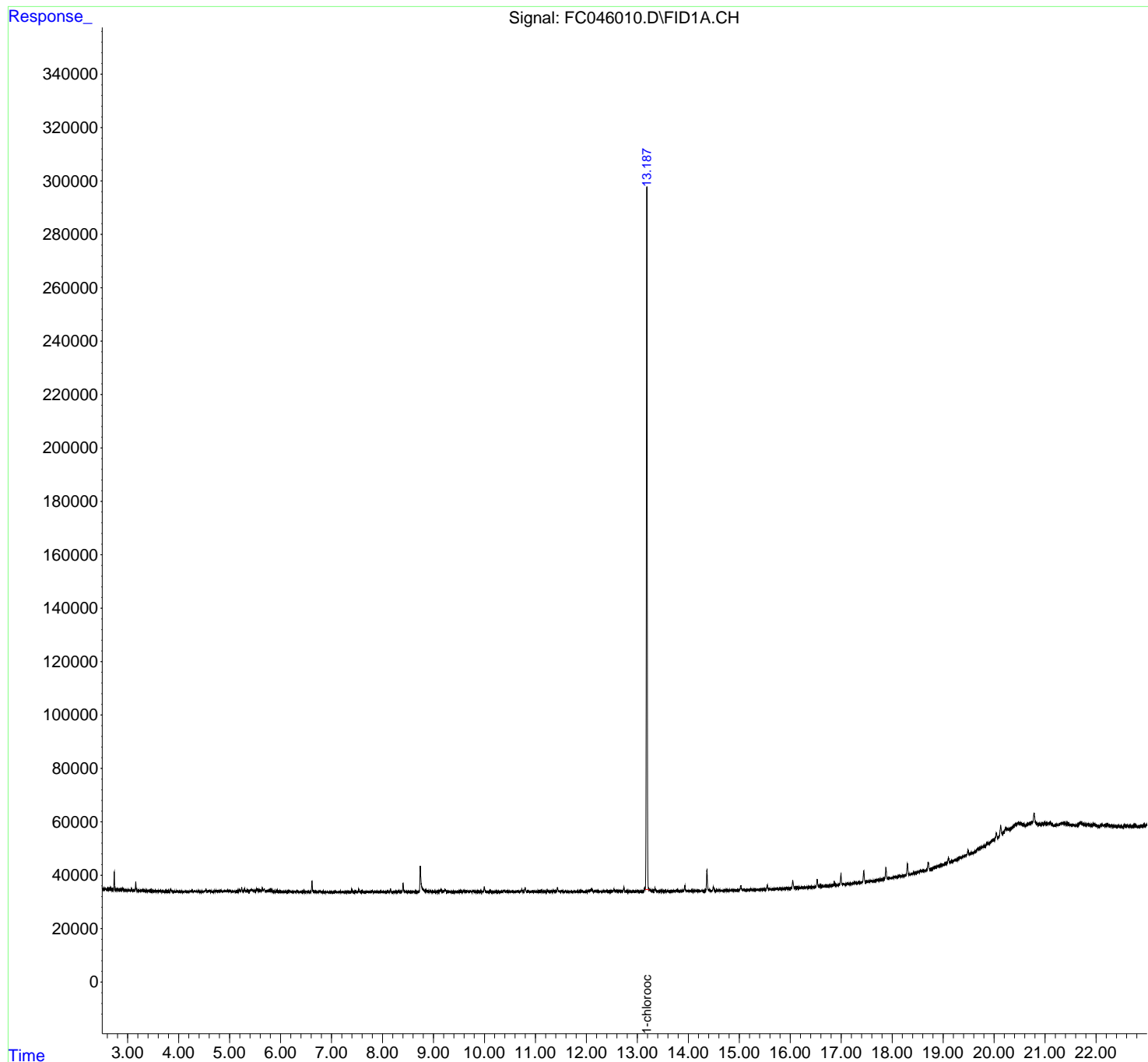
System Monitoring Compounds			
12) S 1-chlorooctadecane (S...	13.187	3097735	34.531 ug/ml
Spiked Amount	50.000	Recovery	= 69.06%
Target Compounds			

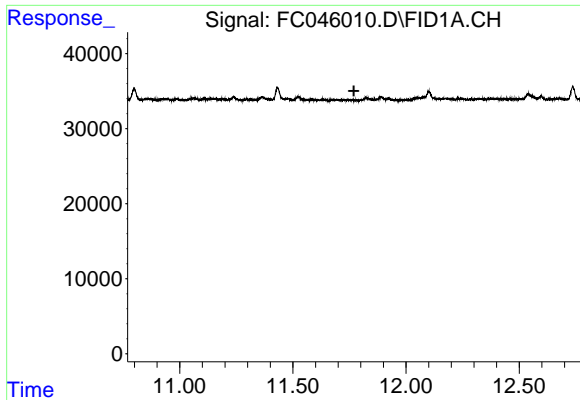
(f)=RT Delta > 1/2 Window		(m)=manual int.	

Data Path : Z:\pestpcbsrv\HPCHEM1\FID_C\Data\FC022820AL\
Data File : FC046010.D
Signal(s) : FID1A.CH
Acq On : 28 Feb 2020 21:10
Operator : DD\AJ
Sample : L1718-11
Misc :
ALS Vial : 12 Sample Multiplier: 1

Integration File: autoint1.e
Quant Time: Feb 28 23:24:54 2020
Quant Method : Z:\pestpcbsrv\HPCHEM1\FID_C\Method\Alaphatic EPH 022120.M
Quant Title : GC Extractables
QLast Update : Sat Feb 22 03:16:45 2020
Response via : Initial Calibration
Integrator: ChemStation 6890 Scale Mode: Large solvent peaks clipped

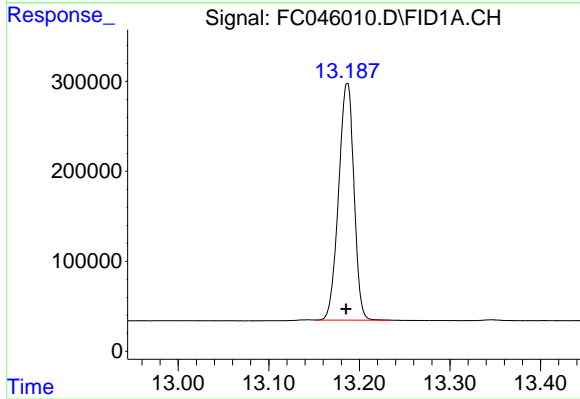
Volume Inj. : 1 ul
Signal Phase : Rxi-1ms
Signal Info : 20M x 0.18mm x 0.18um





#9 ortho-Terphenyl (SURR)

R.T.: 0.000 min
Exp R.T. : 11.770 min
Response: 0
Conc: N.D.



#12 1-chlorooctadecane (SURR)

R.T.: 13.187 min
Delta R.T.: 0.001 min
Response: 3097735
Conc: 34.53 ug/ml