

Data Path : Z:\pestpcbsrv\HPCHEM1\FID_C\Data\FC022924AL\
 Data File : FC065940.D
 Signal(s) : FID1A.ch
 Acq On : 01 Mar 2024 06:37
 Operator : YP/AJ
 Sample : P1620-22
 Misc :
 ALS Vial : 31 Sample Multiplier: 1

Integration File: autoint1.e
 Quant Time: Mar 01 07:28:11 2024
 Quant Method : Z:\pestpcbsrv\HPCHEM1\FID_C\Method\Aliphatic EPH 020824.M
 Quant Title : GC Extractables
 QLast Update : Thu Feb 08 13:26:08 2024
 Response via : Initial Calibration
 Integrator: ChemStation

Volume Inj. : 1 ul
 Signal Phase : Rxi-1ms
 Signal Info : 20M x 0.18mm x 0.18um

Compound	R.T.	Response	Conc Units

System Monitoring Compounds			
9) S ortho-Terphenyl (SURR)	11.494	6537778	38.114 ug/ml
Spiked Amount	50.000	Recovery	= 76.23%
12) S 1-chlorooctadecane (S...	12.924	5283948	41.986 ug/ml
Spiked Amount	50.000	Recovery	= 83.97%

Target Compounds

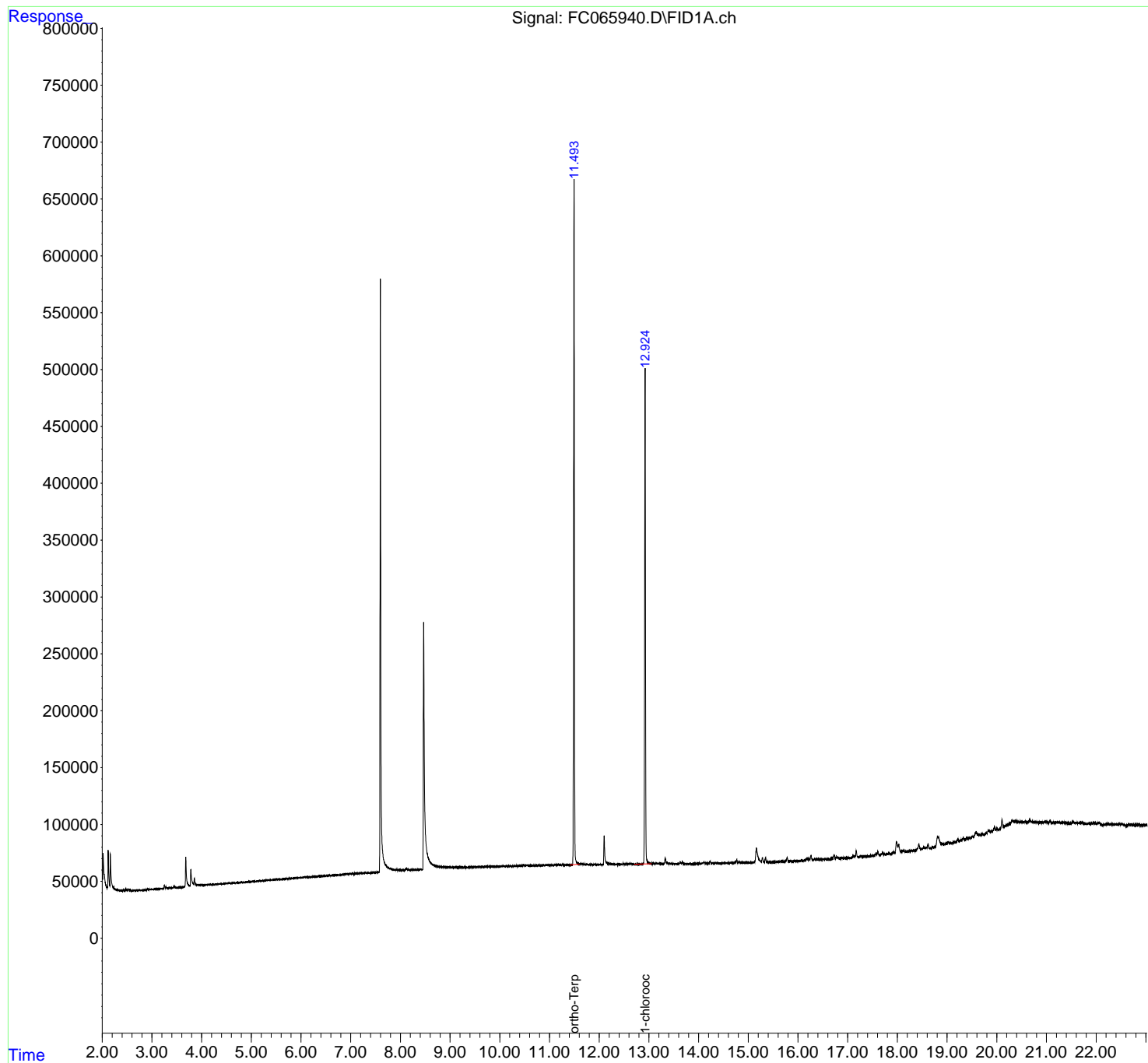
(f)=RT Delta > 1/2 Window

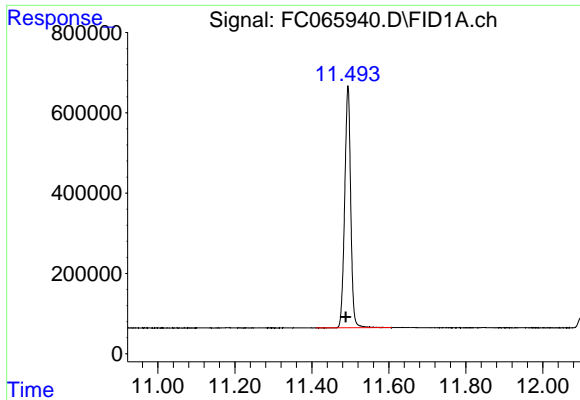
(m)=manual int.

Data Path : Z:\pestpcbsrv\HPCHEM1\FID_C\Data\FC022924AL\
Data File : FC065940.D
Signal(s) : FID1A.ch
Acq On : 01 Mar 2024 06:37
Operator : YP/AJ
Sample : P1620-22
Misc :
ALS Vial : 31 Sample Multiplier: 1

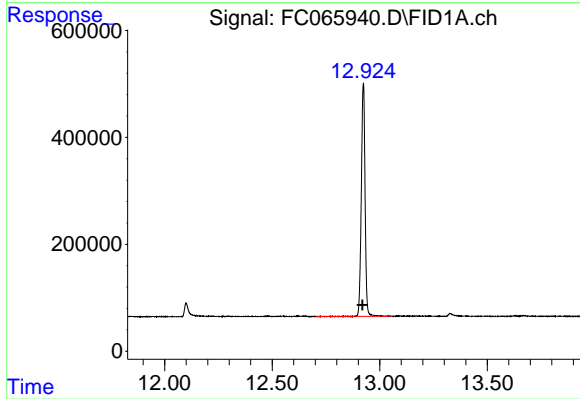
Integration File: autoint1.e
Quant Time: Mar 01 07:28:11 2024
Quant Method : Z:\pestpcbsrv\HPCHEM1\FID_C\Method\Aliphatic EPH 020824.M
Quant Title : GC Extractables
QLast Update : Thu Feb 08 13:26:08 2024
Response via : Initial Calibration
Integrator: ChemStation

Volume Inj. : 1 ul
Signal Phase : Rxi-1ms
Signal Info : 20M x 0.18mm x 0.18um





#9 ortho-Terphenyl (SURR)
R.T.: 11.494 min
Delta R.T.: 0.005 min
Response: 6537778
Conc: 38.11 ug/ml



#12 1-chlorooctadecane (SURR)
R.T.: 12.924 min
Delta R.T.: 0.003 min
Response: 5283948
Conc: 41.99 ug/ml