

Data Path : Z:\pestpcbsrv\HPCHEM1\FID_C\Data\FC030122AL\
 Data File : FC058513.D
 Signal(s) : FID1A.CH
 Acq On : 01 Mar 2022 15:04
 Operator : UA/NP
 Sample : PB143009BL
 Misc :
 ALS Vial : 3 Sample Multiplier: 1

Instrument :
 FID_C
 ClientSampleId :
 PB143009BL

Integration File: autoint1.e
 Quant Time: Mar 02 00:08:23 2022
 Quant Method : Z:\pestpcbsrv\HPCHEM1\FID_C\Method\Aliphatic EPH 022322.M
 Quant Title : GC Extractables
 QLast Update : Wed Feb 23 17:15:11 2022
 Response via : Initial Calibration
 Integrator: ChemStation 6890 Scale Mode: Large solvent peaks clipped

Volume Inj. : 1 ul
 Signal Phase : Rxi-1ms
 Signal Info : 20M x 0.18mm x 0.18um

Compound	R.T.	Response	Conc Units

System Monitoring Compounds			
9) S ortho-Terphenyl (SURR)	11.394	5723550	39.296 ug/ml
Spiked Amount	50.000	Recovery	= 78.59%
12) S 1-chlorooctadecane (S...	12.828	4523317	39.906 ug/ml
Spiked Amount	50.000	Recovery	= 79.81%

Target Compounds

(f)=RT Delta > 1/2 Window

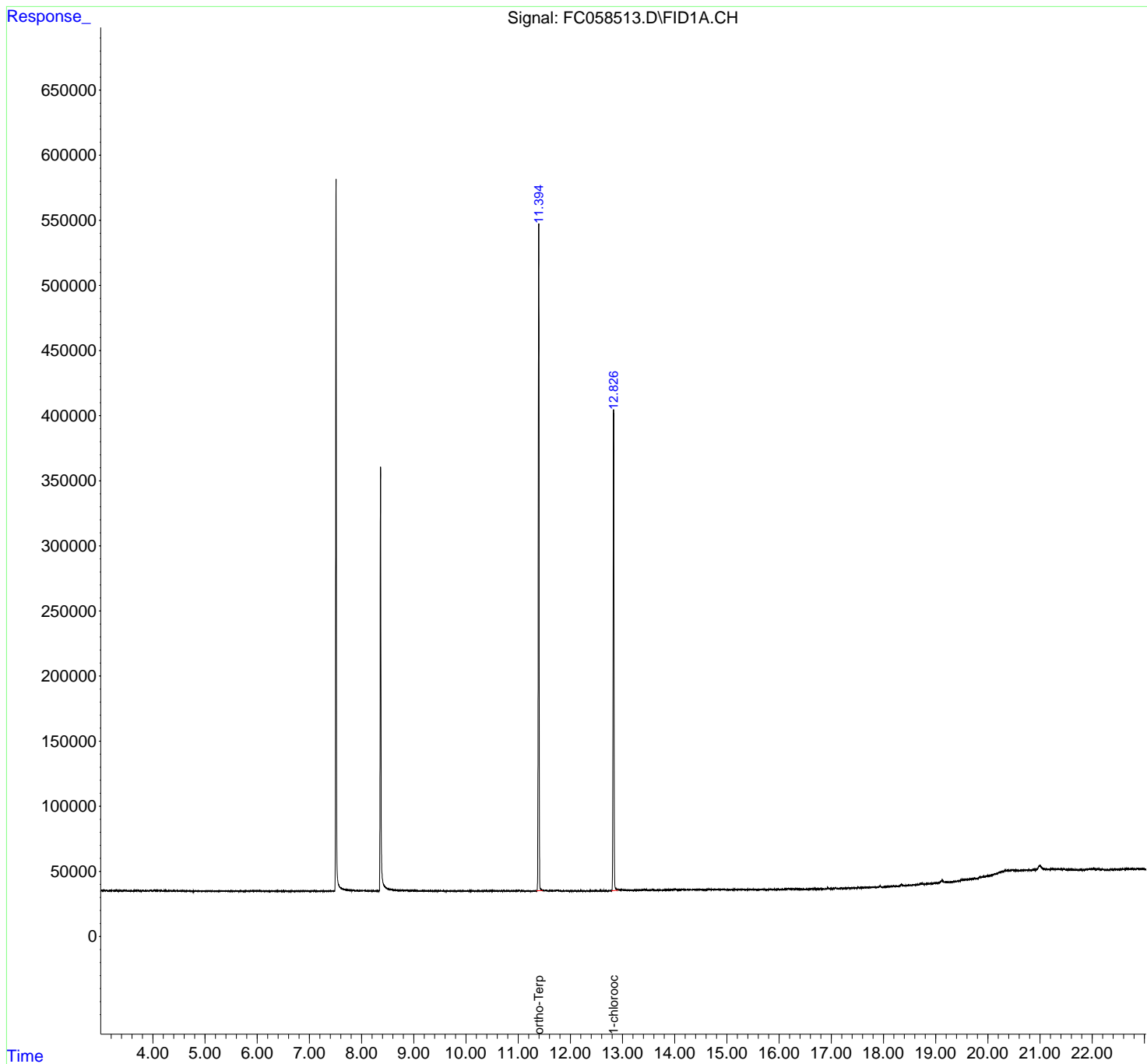
(m)=manual int.

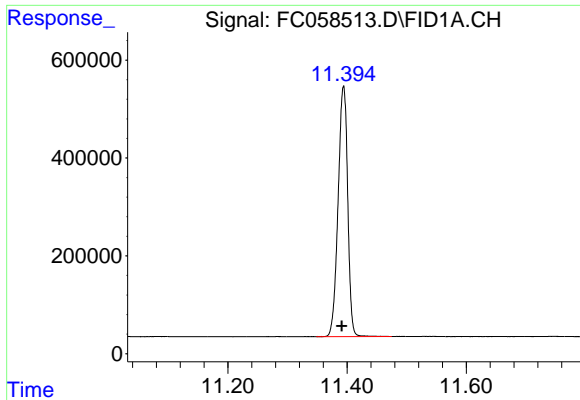
Data Path : Z:\pestpcbsrv\HPCHEM1\FID_C\Data\FC030122AL\
 Data File : FC058513.D
 Signal(s) : FID1A.CH
 Acq On : 01 Mar 2022 15:04
 Operator : UA/NP
 Sample : PB143009BL
 Misc :
 ALS Vial : 3 Sample Multiplier: 1

Instrument :
 FID_C
 ClientSampleId :
 PB143009BL

Integration File: autoint1.e
 Quant Time: Mar 02 00:08:23 2022
 Quant Method : Z:\pestpcbsrv\HPCHEM1\FID_C\Method\Aliphatic EPH 022322.M
 Quant Title : GC Extractables
 QLast Update : Wed Feb 23 17:15:11 2022
 Response via : Initial Calibration
 Integrator: ChemStation 6890 Scale Mode: Large solvent peaks clipped

Volume Inj. : 1 ul
 Signal Phase : Rxi-1ms
 Signal Info : 20M x 0.18mm x 0.18um

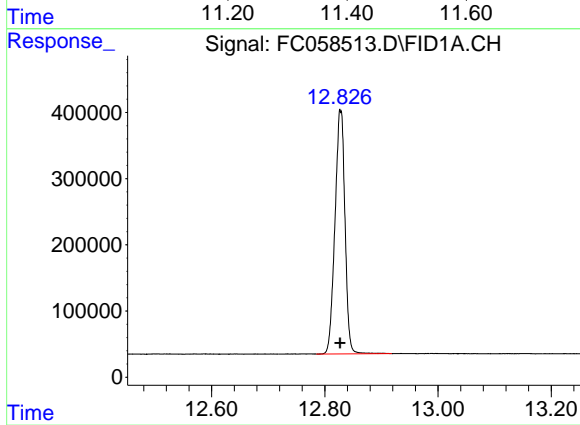




#9 ortho-Terphenyl (SURR)

R.T.: 11.394 min
Delta R.T.: 0.003 min
Response: 5723550
Conc: 39.30 ug/ml

Instrument :
FID_C
ClientSampleId :
PB143009BL



#12 1-chlorooctadecane (SURR)

R.T.: 12.828 min
Delta R.T.: 0.000 min
Response: 4523317
Conc: 39.91 ug/ml