

Data Path : Z:\pestpcbsrv\HPCHEM1\FID_C\Data\FC030320AL\
 Data File : FC046063.D
 Signal(s) : FID1A.CH
 Acq On : 03 Mar 2020 14:29
 Operator : DD\AJ
 Sample : PB127236BL
 Misc :
 ALS Vial : 5 Sample Multiplier: 1

Integration File: autoint1.e
 Quant Time: Mar 04 00:59:48 2020
 Quant Method : Z:\pestpcbsrv\HPCHEM1\FID_C\Method\Alaphatic EPH 022120.M
 Quant Title : GC Extractables
 QLast Update : Sat Feb 22 03:16:45 2020
 Response via : Initial Calibration
 Integrator: ChemStation 6890 Scale Mode: Large solvent peaks clipped

Volume Inj. : 1 ul
 Signal Phase : Rxi-1ms
 Signal Info : 20M x 0.18mm x 0.18um

Compound	R.T.	Response	Conc Units

System Monitoring Compounds			
9) S ortho-Terphenyl (SURR)	11.769	5604831	49.131 ug/ml
Spiked Amount	50.000	Recovery	= 98.26%
12) S 1-chlorooctadecane (S...	13.188	4500967	50.173 ug/ml
Spiked Amount	50.000	Recovery	= 100.35%

Target Compounds

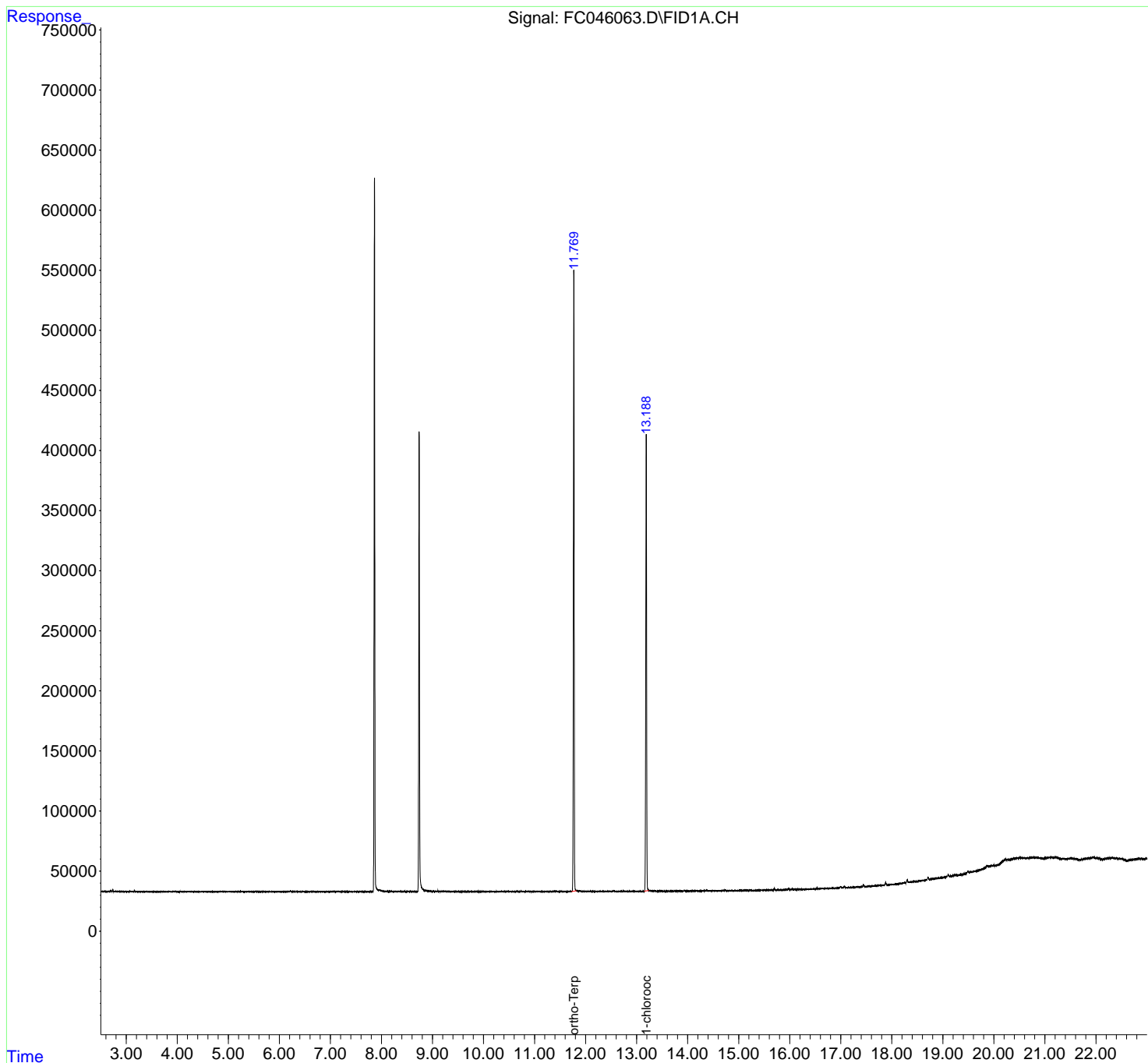
(f)=RT Delta > 1/2 Window

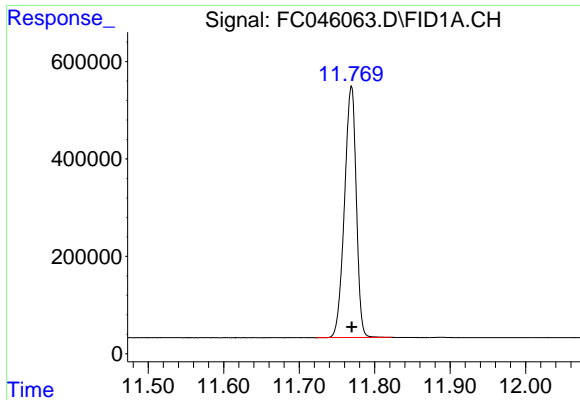
(m)=manual int.

Data Path : Z:\pestpcbsrv\HPCHEM1\FID_C\Data\FC030320AL\
Data File : FC046063.D
Signal(s) : FID1A.CH
Acq On : 03 Mar 2020 14:29
Operator : DD\AJ
Sample : PB127236BL
Misc :
ALS Vial : 5 Sample Multiplier: 1

Integration File: autoint1.e
Quant Time: Mar 04 00:59:48 2020
Quant Method : Z:\pestpcbsrv\HPCHEM1\FID_C\Method\Alaphatic EPH 022120.M
Quant Title : GC Extractables
QLast Update : Sat Feb 22 03:16:45 2020
Response via : Initial Calibration
Integrator: ChemStation 6890 Scale Mode: Large solvent peaks clipped

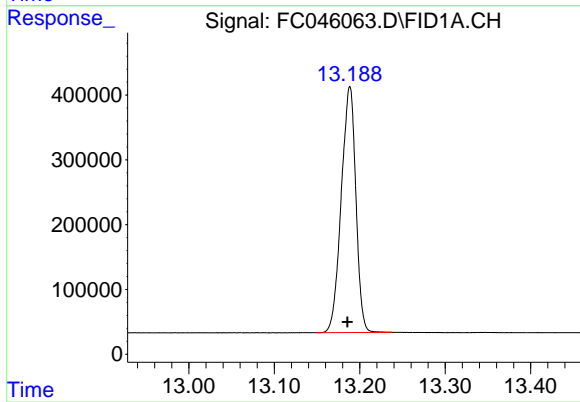
Volume Inj. : 1 ul
Signal Phase : Rxi-1ms
Signal Info : 20M x 0.18mm x 0.18um





#9 ortho-Terphenyl (SURR)

R.T.: 11.769 min
Delta R.T.: 0.000 min
Response: 5604831
Conc: 49.13 ug/ml



#12 1-chlorooctadecane (SURR)

R.T.: 13.188 min
Delta R.T.: 0.003 min
Response: 4500967
Conc: 50.17 ug/ml