

Data Path : Z:\pestpcbsrv\HPCHEM1\FID_C\Data\FC030322AL\
 Data File : FC058572.D
 Signal(s) : FID1A.CH
 Acq On : 04 Mar 2022 00:47
 Operator : UA/NP
 Sample : 20 PPM ALIPHATIC HC STD
 Misc :
 ALS Vial : 2 Sample Multiplier: 1

Instrument :
 FID_C
 ClientSampleId :
 20 PPM ALIPHATIC HC STD

Manual Integrations
 APPROVED

Reviewed By :Yogesh Patel 03/04/2022
 Supervised By :Ankita Jodhani 03/04/2022

Integration File: sample.E
 Quant Time: Mar 04 01:26:29 2022
 Quant Method : Z:\pestpcbsrv\HPCHEM1\FID_C\Method\Aliphatic EPH 022322.M
 Quant Title : GC Extractables
 QLast Update : Wed Feb 23 17:15:11 2022
 Response via : Initial Calibration
 Integrator: ChemStation 6890 Scale Mode: Large solvent peaks clipped

Volume Inj. : 1 ul
 Signal Phase : Rxi-1ms
 Signal Info : 20M x 0.18mm x 0.18um

Compound	R.T.	Response	Conc Units

System Monitoring Compounds			
9) S ortho-Terphenyl (SURR)	11.392	2717983	18.661 ug/ml
Spiked Amount	50.000	Recovery	= 37.32%
12) S 1-chlorooctadecane (S...	12.825	2098948	18.517 ug/ml
Spiked Amount	50.000	Recovery	= 37.03%
Target Compounds			
1) T n-Nonane (C9)	3.248	2410412	20.044 ug/ml
2) T n-Decane (C10)	4.298	2414561	20.291 ug/ml
3) T A~Naphthalene (C11.7)	5.857	2591917	19.971 ug/ml
4) T n-Dodecane (C12)	6.292	2476660	20.133 ug/ml
5) T A~2-methylnaphthalene...	6.902	2633730	20.202 ug/ml
6) T n-Tetradecane (C14)	8.069	2515936	20.078 ug/ml
7) T n-Hexadecane (C16)	9.656	2544355	19.757 ug/ml
8) T n-Octadecane (C18)	11.086	2544130	19.333 ug/ml
10) T n-Eicosane (C20)	12.386	2483372	18.885 ug/ml
11) T n-Heneicosane (C21)	12.993	2455936	18.583 ug/ml
13) T n-Docosane (C22)	13.576	2458728	18.860 ug/ml
14) T n-Tetracosane (C24)	14.671	2458758	19.040 ug/ml
15) T n-Hexacosane (C26)	15.685	2389464	19.316 ug/ml
16) T n-Octacosane (C28)	16.630	2428959	20.406 ug/ml
17) T n-Tricontane (C30)	17.513	2476587	22.002 ug/ml
18) T n-Dotriacontane (C32)	18.341	2393756	22.261 ug/ml
19) T n-Tetratriacontane (C34)	19.121	2173559	22.433 ug/ml
20) T n-Hexatriacontane (C36)	19.856	2013734	22.321 ug/ml
21) T n-Octatriacontane (C38)	20.560	1891399	21.734 ug/mlm
22) T n-Tetracontane (C40)	21.385	1862337	22.193 ug/ml

(f)=RT Delta > 1/2 Window

(m)=manual int.

Data Path : Z:\pestpcbsrv\HPCHEM1\FID_C\Data\FC030322AL\
 Data File : FC058572.D
 Signal(s) : FID1A.CH
 Acq On : 04 Mar 2022 00:47
 Operator : UA/NP
 Sample : 20 PPM ALIPHATIC HC STD
 Misc :
 ALS Vial : 2 Sample Multiplier: 1

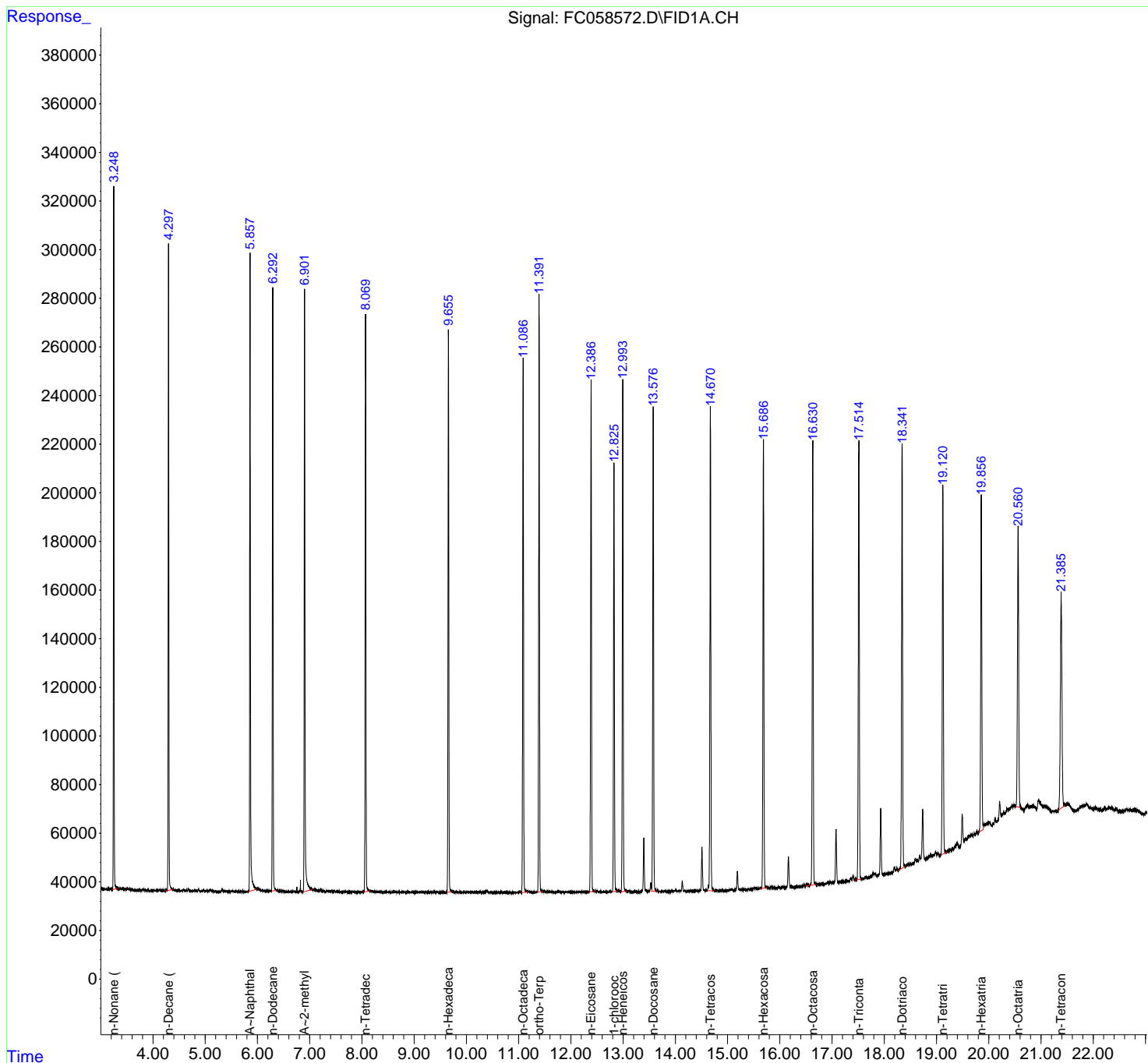
Instrument :
 FID_C
 ClientSampleId :
 20 PPM ALIPHATIC HC STD

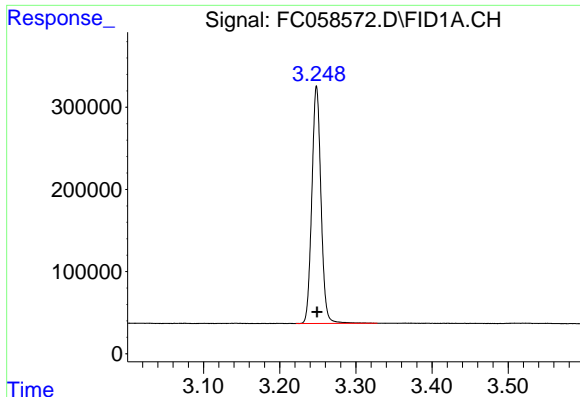
Manual Integrations
APPROVED

Reviewed By :Yogesh Patel 03/04/2022
 Supervised By :Ankita Jodhani 03/04/2022

Integration File: sample.E
 Quant Time: Mar 04 01:26:29 2022
 Quant Method : Z:\pestpcbsrv\HPCHEM1\FID_C\Method\Aliphatic EPH 022322.M
 Quant Title : GC Extractables
 QLast Update : Wed Feb 23 17:15:11 2022
 Response via : Initial Calibration
 Integrator: ChemStation 6890 Scale Mode: Large solvent peaks clipped

Volume Inj. : 1 ul
 Signal Phase : Rxi-1ms
 Signal Info : 20M x 0.18mm x 0.18um





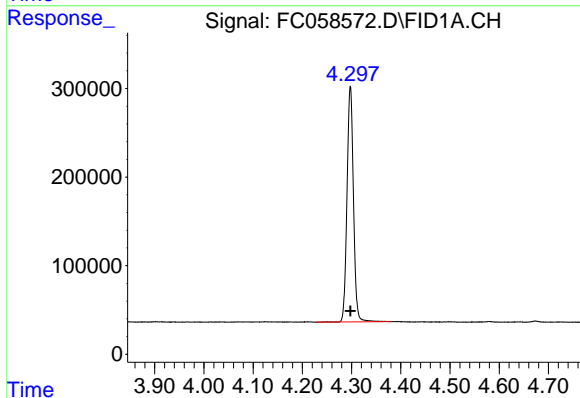
#1 n-Nonane (C9)

R.T.: 3.248 min
 Delta R.T.: 0.000 min
 Response: 2410412
 Conc: 20.04 ug/ml

Instrument :
 FID_C
 ClientSampleId :
 20 PPM ALIPHATIC HC STD

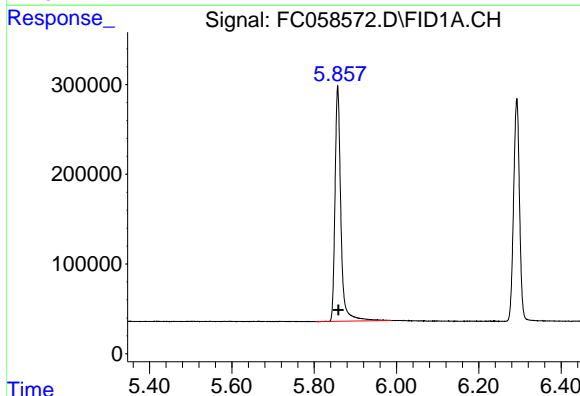
Manual Integrations
 APPROVED

Reviewed By :Yogesh Patel 03/04/2022
 Supervised By :Ankita Jodhani 03/04/2022



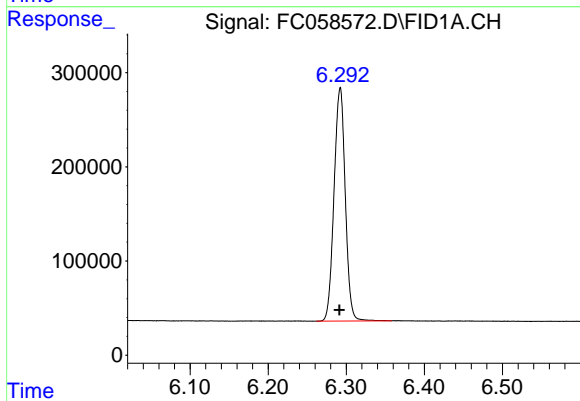
#2 n-Decane (C10)

R.T.: 4.298 min
 Delta R.T.: 0.000 min
 Response: 2414561
 Conc: 20.29 ug/ml



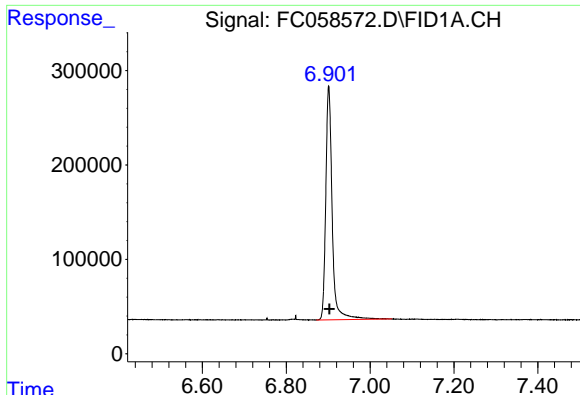
#3 A~Naphthalene (C11.7)

R.T.: 5.857 min
 Delta R.T.: -0.002 min
 Response: 2591917
 Conc: 19.97 ug/ml



#4 n-Dodecane (C12)

R.T.: 6.292 min
 Delta R.T.: 0.000 min
 Response: 2476660
 Conc: 20.13 ug/ml



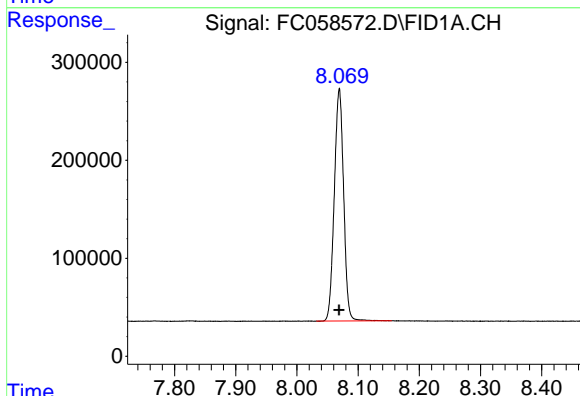
#5 A~2-methylnaphthalene (C12.89)

R.T.: 6.902 min
 Delta R.T.: -0.001 min
 Response: 2633730
 Conc: 20.20 ug/ml

Instrument : FID_C
 ClientSampleId : 20 PPM ALIPHATIC HC STD

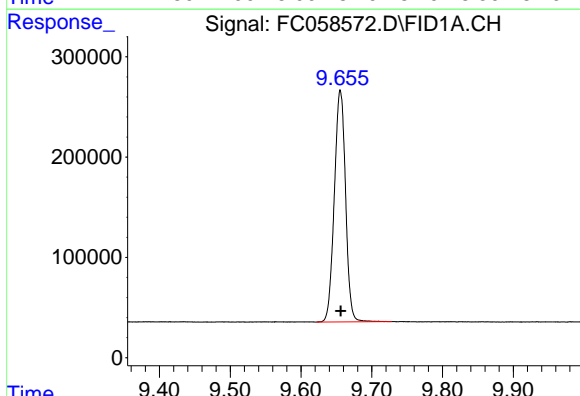
Manual Integrations
 APPROVED

Reviewed By :Yogesh Patel 03/04/2022
 Supervised By :Ankita Jodhani 03/04/2022



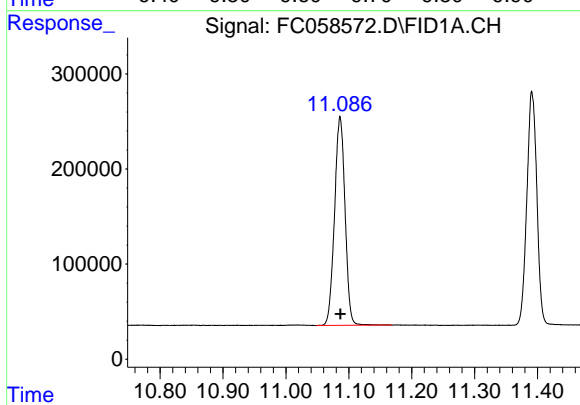
#6 n-Tetradecane (C14)

R.T.: 8.069 min
 Delta R.T.: 0.000 min
 Response: 2515936
 Conc: 20.08 ug/ml



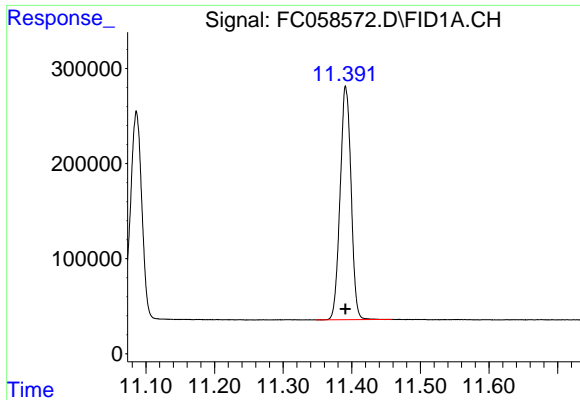
#7 n-Hexadecane (C16)

R.T.: 9.656 min
 Delta R.T.: 0.000 min
 Response: 2544355
 Conc: 19.76 ug/ml



#8 n-Octadecane (C18)

R.T.: 11.086 min
 Delta R.T.: 0.000 min
 Response: 2544130
 Conc: 19.33 ug/ml



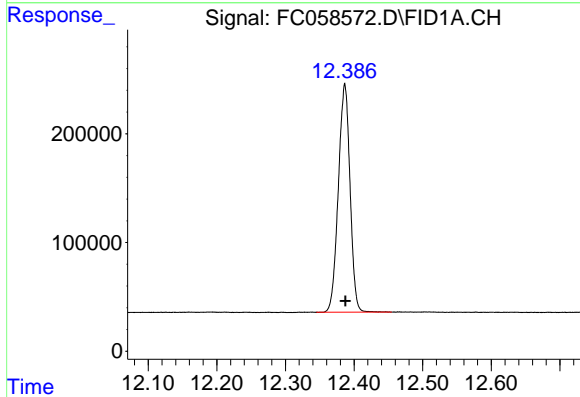
#9 ortho-Terphenyl (SURR)

R.T.: 11.392 min
 Delta R.T.: 0.000 min
 Response: 2717983
 Conc: 18.66 ug/ml

Instrument : FID_C
 ClientSampleId : 20 PPM ALIPHATIC HC STD

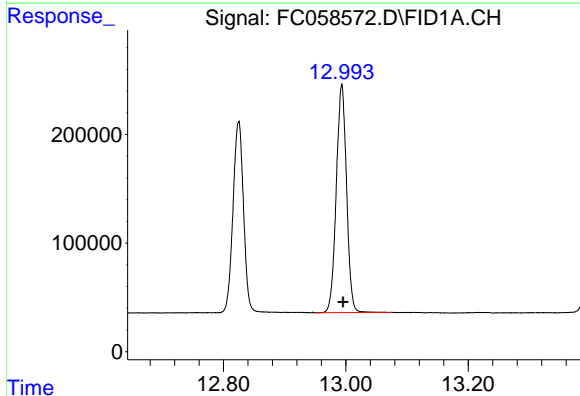
Manual Integrations
 APPROVED

Reviewed By :Yogesh Patel 03/04/2022
 Supervised By :Ankita Jodhani 03/04/2022



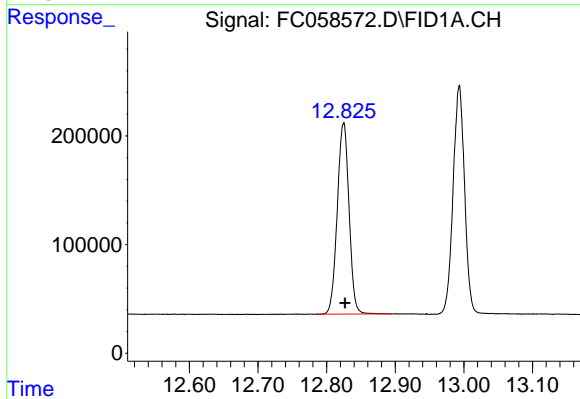
#10 n-Eicosane (C20)

R.T.: 12.386 min
 Delta R.T.: -0.001 min
 Response: 2483372
 Conc: 18.89 ug/ml



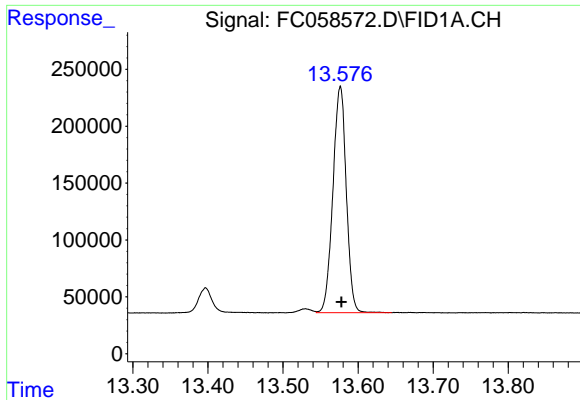
#11 n-Heneicosane (C21)

R.T.: 12.993 min
 Delta R.T.: -0.002 min
 Response: 2455936
 Conc: 18.58 ug/ml



#12 1-chlorooctadecane (SURR)

R.T.: 12.825 min
 Delta R.T.: -0.002 min
 Response: 2098948
 Conc: 18.52 ug/ml



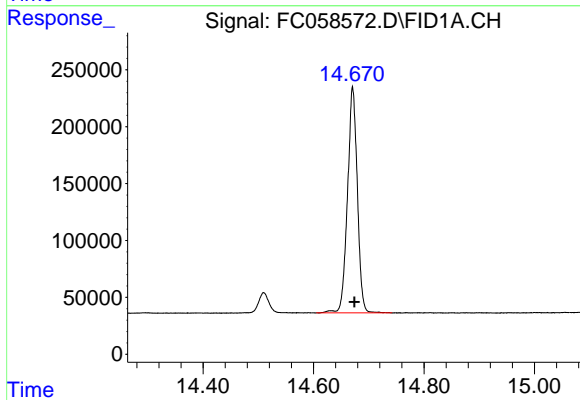
#13 n-Docosane (C22)

R.T.: 13.576 min
Delta R.T.: -0.002 min
Response: 2458728
Conc: 18.86 ug/ml

Instrument :
FID_C
ClientSampleId :
20 PPM ALIPHATIC HC STD

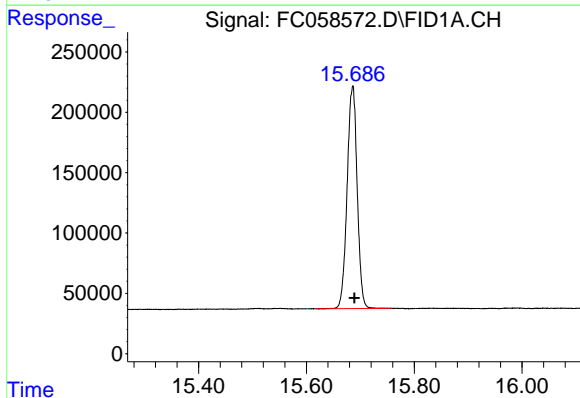
Manual Integrations
APPROVED

Reviewed By :Yogesh Patel 03/04/2022
Supervised By :Ankita Jodhani 03/04/2022



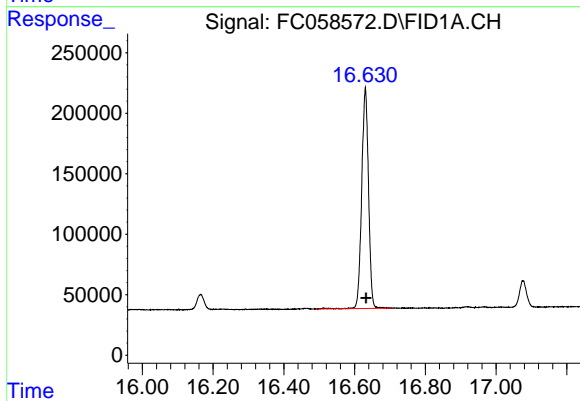
#14 n-Tetracosane (C24)

R.T.: 14.671 min
Delta R.T.: -0.003 min
Response: 2458758
Conc: 19.04 ug/ml



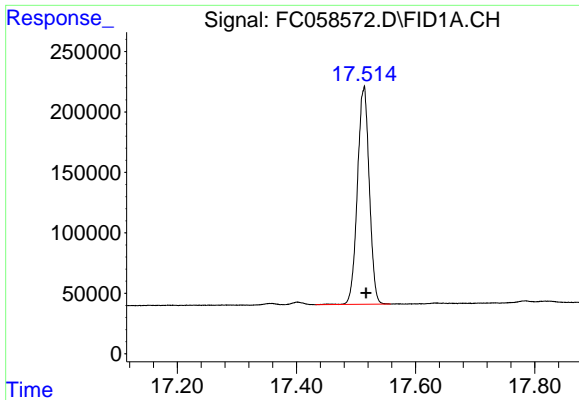
#15 n-Hexacosane (C26)

R.T.: 15.685 min
Delta R.T.: -0.004 min
Response: 2389464
Conc: 19.32 ug/ml



#16 n-Octacosane (C28)

R.T.: 16.630 min
Delta R.T.: -0.003 min
Response: 2428959
Conc: 20.41 ug/ml



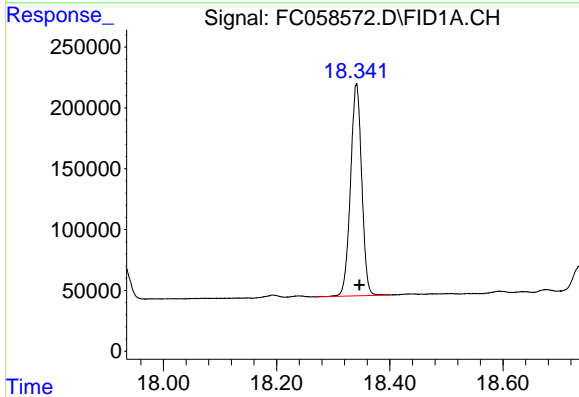
#17 n-Tricontane (C30)

R.T.: 17.513 min
 Delta R.T.: -0.004 min
 Response: 2476587
 Conc: 22.00 ug/ml

Instrument : FID_C
 Client Sample Id : 20 PPM ALIPHATIC HC STD

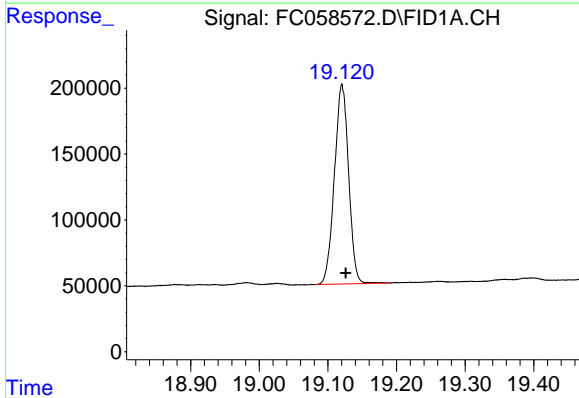
Manual Integrations
 APPROVED

Reviewed By :Yogesh Patel 03/04/2022
 Supervised By :Ankita Jodhani 03/04/2022



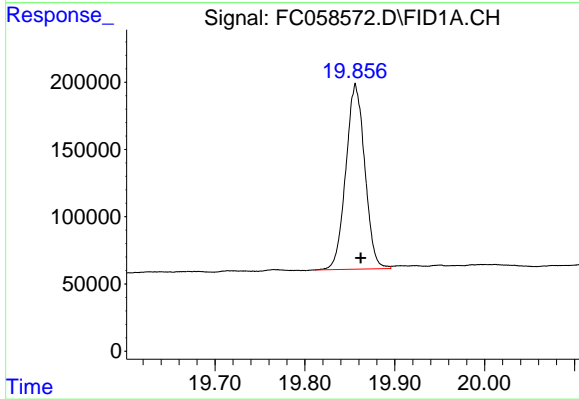
#18 n-Dotriacontane (C32)

R.T.: 18.341 min
 Delta R.T.: -0.005 min
 Response: 2393756
 Conc: 22.26 ug/ml



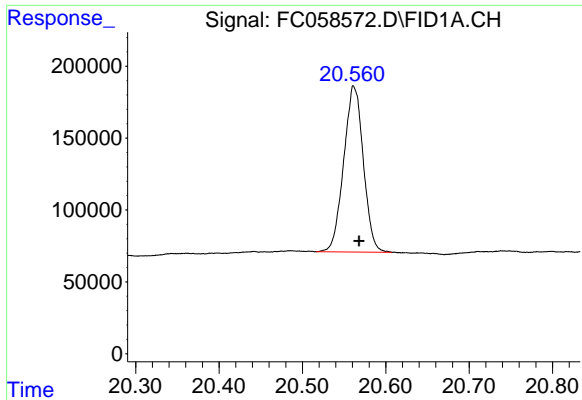
#19 n-Tetratriacontane (C34)

R.T.: 19.121 min
 Delta R.T.: -0.005 min
 Response: 2173559
 Conc: 22.43 ug/ml



#20 n-Hexatriacontane (C36)

R.T.: 19.856 min
 Delta R.T.: -0.006 min
 Response: 2013734
 Conc: 22.32 ug/ml



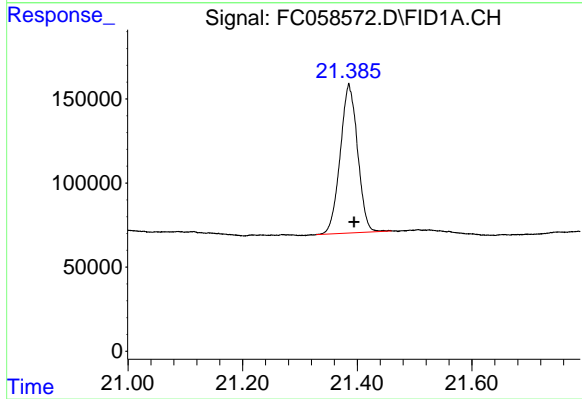
#21 n-Octatriacontane (C38)

R.T.: 20.560 min
Delta R.T.: -0.008 min
Response: 1891399
Conc: 21.73 ug/ml

Instrument :
FID_C
ClientSampleId :
20 PPM ALIPHATIC HC STD

Manual Integrations
APPROVED

Reviewed By :Yogesh Patel 03/04/2022
Supervised By :Ankita Jodhani 03/04/2022



#22 n-Tetracontane (C40)

R.T.: 21.385 min
Delta R.T.: -0.009 min
Response: 1862337
Conc: 22.19 ug/ml