

Data Path : Z:\pestpcbsrv\HPCHEM1\FID_C\Data\FC030425AL\
 Data File : FC068355.D
 Signal(s) : FID1A.ch
 Acq On : 04 Mar 2025 18:06
 Operator : YP/AJ
 Sample : Q1480-25
 Misc :
 ALS Vial : 14 Sample Multiplier: 1

Instrument :
 FID_C
 ClientSampleId :

Integration File: autoint1.e
 Quant Time: Mar 05 04:33:42 2025
 Quant Method : Z:\pestpcbsrv\HPCHEM1\FID_C\Method\Aliphatic EPH 021125.M
 Quant Title : GC Extractables
 QLast Update : Wed Mar 05 03:08:52 2025
 Response via : Initial Calibration
 Integrator: ChemStation

Volume Inj. : 1 ul
 Signal Phase : Rxi-1ms
 Signal Info : 20M x 0.18mm x 0.18um

Compound	R.T.	Response	Conc Units

System Monitoring Compounds			
9) S ortho-Terphenyl (SURR)	11.392	5358234	34.920 ug/ml
Spiked Amount	50.000	Recovery	= 69.84%
12) S 1-chlorooctadecane (S...	12.834	3876733	34.468 ug/ml
Spiked Amount	50.000	Recovery	= 68.94%

Target Compounds

(f)=RT Delta > 1/2 Window

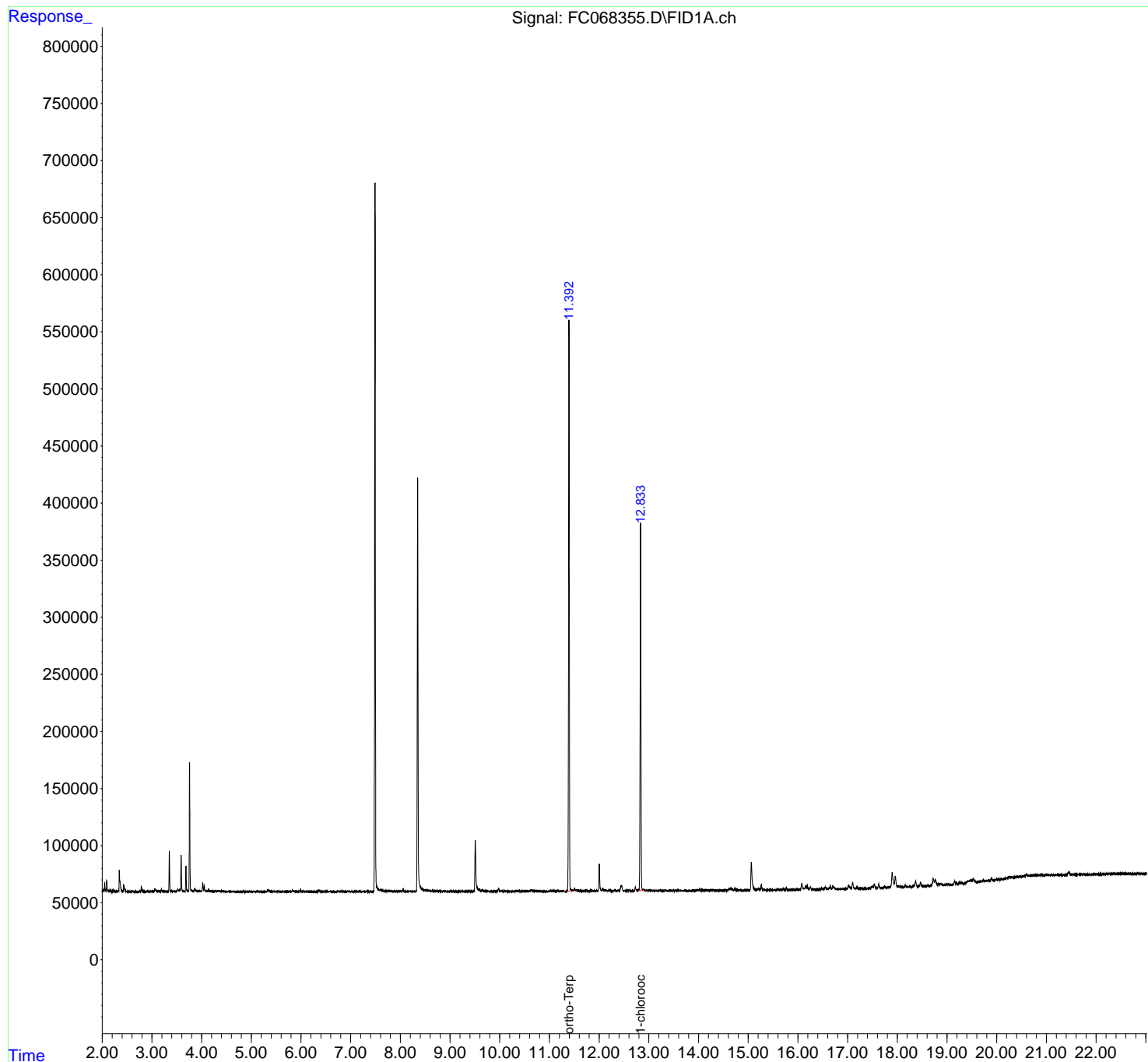
(m)=manual int.

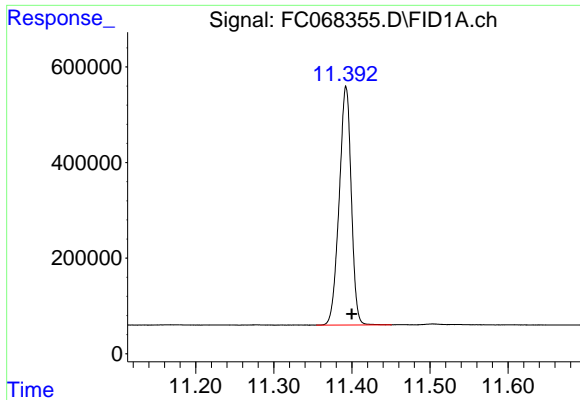
Data Path : Z:\pestpcbsrv\HPCHEM1\FID_C\Data\FC030425AL\
 Data File : FC068355.D
 Signal(s) : FID1A.ch
 Acq On : 04 Mar 2025 18:06
 Operator : YP/AJ
 Sample : Q1480-25
 Misc :
 ALS Vial : 14 Sample Multiplier: 1

Instrument :
 FID_C
 ClientSampleId :

Integration File: autoint1.e
 Quant Time: Mar 05 04:33:42 2025
 Quant Method : Z:\pestpcbsrv\HPCHEM1\FID_C\Method\Aliphatic EPH 021125.M
 Quant Title : GC Extractables
 QLast Update : Wed Mar 05 03:08:52 2025
 Response via : Initial Calibration
 Integrator: ChemStation

Volume Inj. : 1 ul
 Signal Phase : Rxi-1ms
 Signal Info : 20M x 0.18mm x 0.18um

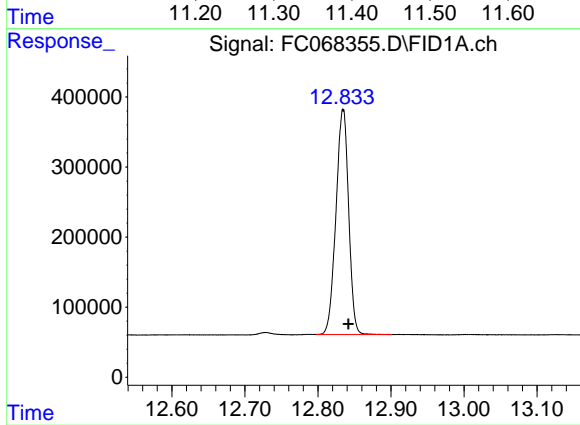




#9 ortho-Terphenyl (SURR)

R.T.: 11.392 min
Delta R.T.: -0.007 min
Response: 5358234
Conc: 34.92 ug/ml

Instrument :
FID_C
ClientSampleId :



#12 1-chlorooctadecane (SURR)

R.T.: 12.834 min
Delta R.T.: -0.007 min
Response: 3876733
Conc: 34.47 ug/ml