

Data Path : Z:\pestpcbsrv\HPCHEM1\FID_C\Data\FC030521AL\
 Data File : FC052255.D
 Signal(s) : FID1A.CH
 Acq On : 05 Mar 2021 17:56
 Operator : DD\AJ
 Sample : M1565-02
 Misc :
 ALS Vial : 7 Sample Multiplier: 1

Integration File: autoint1.e
 Quant Time: Mar 06 00:00:08 2021
 Quant Method : Z:\pestpcbsrv\HPCHEM1\FID_C\Method\Alaphatic EPH 030321.M
 Quant Title : GC Extractables
 QLast Update : Thu Mar 04 03:56:17 2021
 Response via : Initial Calibration
 Integrator: ChemStation 6890 Scale Mode: Large solvent peaks clipped

Volume Inj. : 1 ul
 Signal Phase : Rxi-1ms
 Signal Info : 20M x 0.18mm x 0.18um

Compound	R.T.	Response	Conc Units

System Monitoring Compounds			
9) S ortho-Terphenyl (SURR)	11.621	4218781	31.990 ug/ml
Spiked Amount	50.000	Recovery	= 63.98%
12) S 1-chlorooctadecane (S...	13.060	4683796	45.037 ug/ml
Spiked Amount	50.000	Recovery	= 90.07%
Target Compounds			
3) T A~Naphthalene (C11.7)	6.017	792651	5.970 ug/ml
5) T A~2-methylnaphthalene...	7.076	557992	4.111 ug/ml
6) T n-Tetradecane (C14)	8.204	214589	1.770 ug/ml
7) T n-Hexadecane (C16)	9.865	722412	6.038 ug/ml
8) T n-Octadecane (C18)	11.245f	90961	0.735 ug/ml
10) T n-Eicosane (C20)	12.599	350418	2.844 ug/ml
11) T n-Heneicosane (C21)	13.239	748528	6.132 ug/ml
13) T n-Docosane (C22)	13.841	1159020	9.633 ug/ml
14) T n-Tetracosane (C24)	14.906	4561330	39.125 ug/ml
15) T n-Hexacosane (C26)	15.953	349007	3.177 ug/ml
16) T n-Octacosane (C28)	16.903	1343484	13.107 ug/ml
17) T n-Tricontane (C30)	17.778	992571	10.544 ug/ml
18) T n-Dotriacontane (C32)	18.609	503149	5.893 ug/ml
19) T n-Tetratriacontane (C34)	19.392	357441	4.610 ug/ml
20) T n-Hexatriacontane (C36)	20.132	105265	1.465 ug/ml

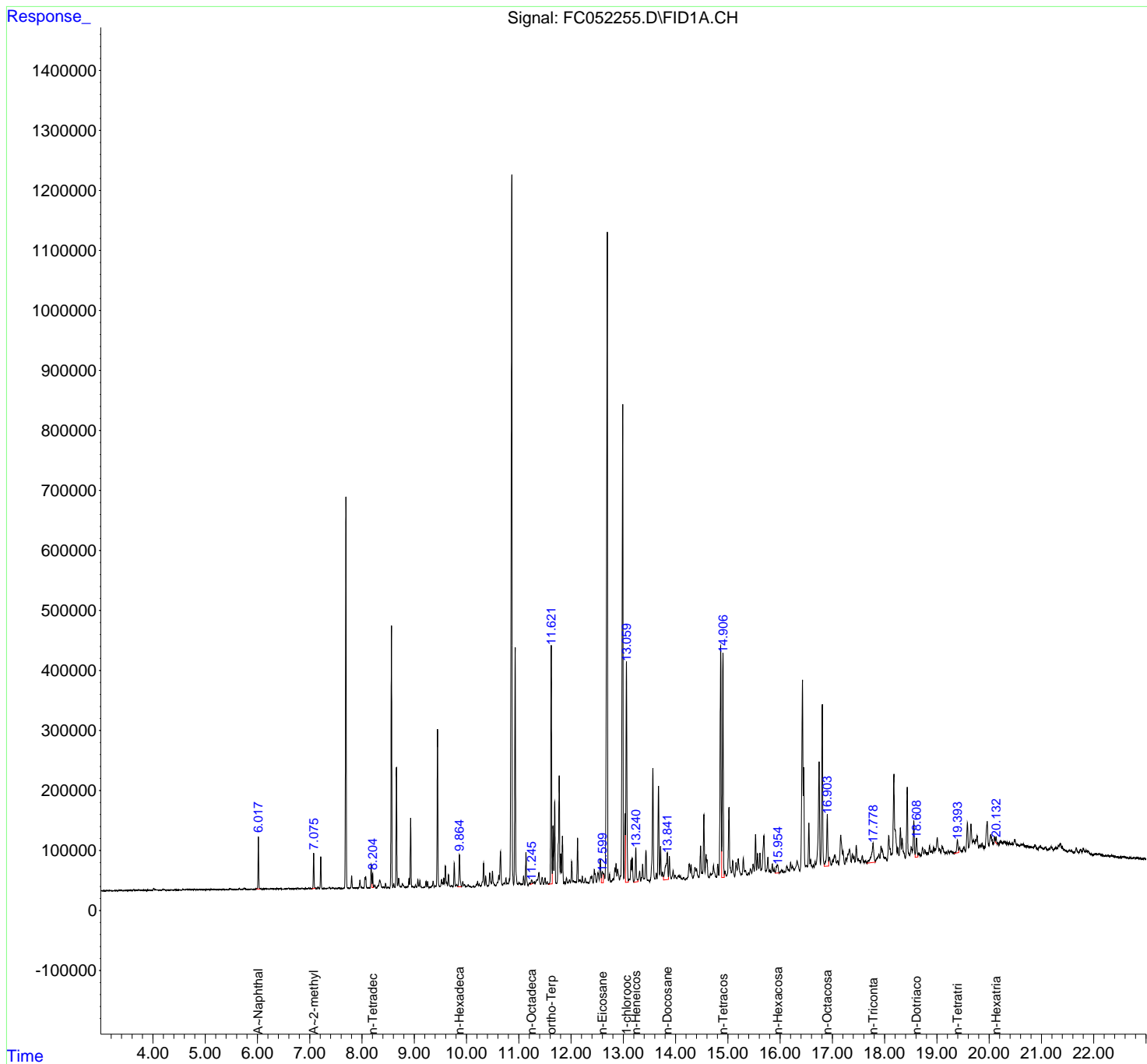
(f)=RT Delta > 1/2 Window

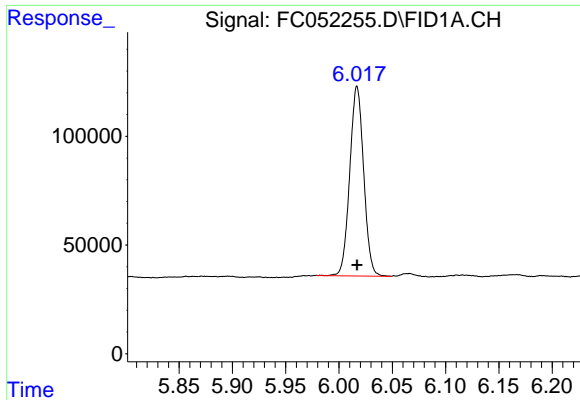
(m)=manual int.

Data Path : Z:\pestpcbsrv\HPCHEM1\FID_C\Data\FC030521AL\
 Data File : FC052255.D
 Signal(s) : FID1A.CH
 Acq On : 05 Mar 2021 17:56
 Operator : DD\AJ
 Sample : M1565-02
 Misc :
 ALS Vial : 7 Sample Multiplier: 1

Integration File: autoint1.e
 Quant Time: Mar 06 00:00:08 2021
 Quant Method : Z:\pestpcbsrv\HPCHEM1\FID_C\Method\Aliphatic EPH 030321.M
 Quant Title : GC Extractables
 QLast Update : Thu Mar 04 03:56:17 2021
 Response via : Initial Calibration
 Integrator: ChemStation 6890 Scale Mode: Large solvent peaks clipped

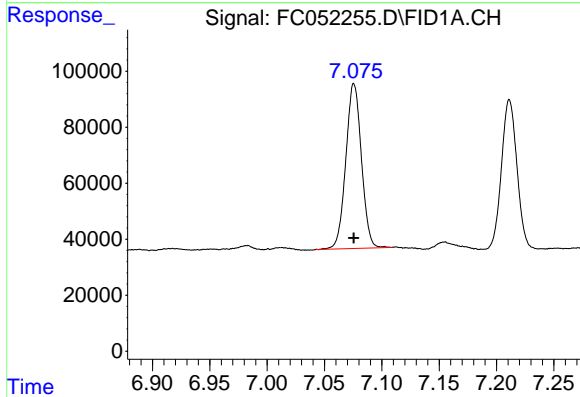
Volume Inj. : 1 ul
 Signal Phase : Rxi-1ms
 Signal Info : 20M x 0.18mm x 0.18um





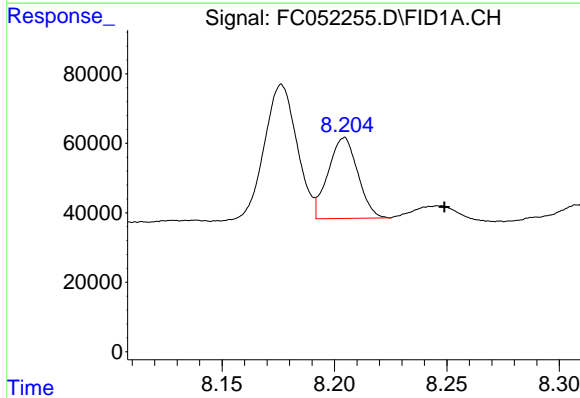
#3 A~Naphthalene (C11.7)

R.T.: 6.017 min
Delta R.T.: 0.000 min
Response: 792651
Conc: 5.97 ug/ml



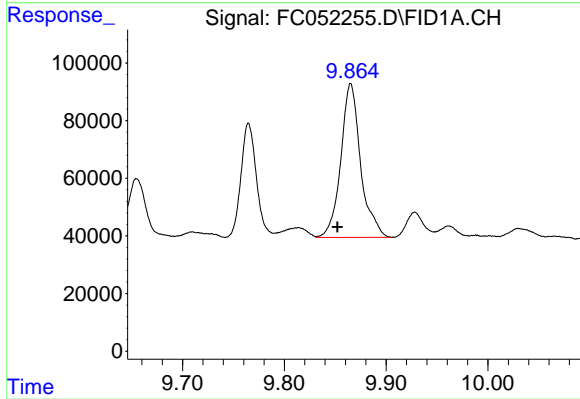
#5 A~2-methylnaphthalene (C12.89)

R.T.: 7.076 min
Delta R.T.: 0.000 min
Response: 557992
Conc: 4.11 ug/ml



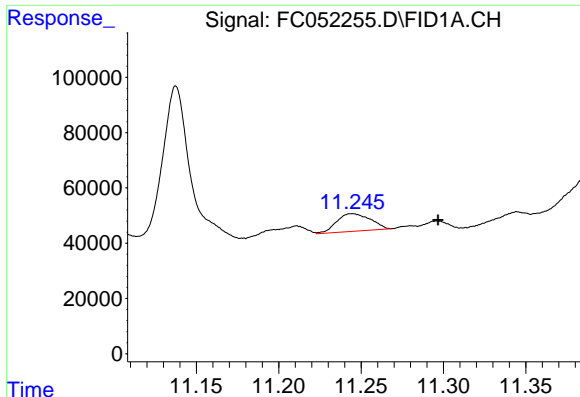
#6 n-Tetradecane (C14)

R.T.: 8.204 min
Delta R.T.: -0.045 min
Response: 214589
Conc: 1.77 ug/ml

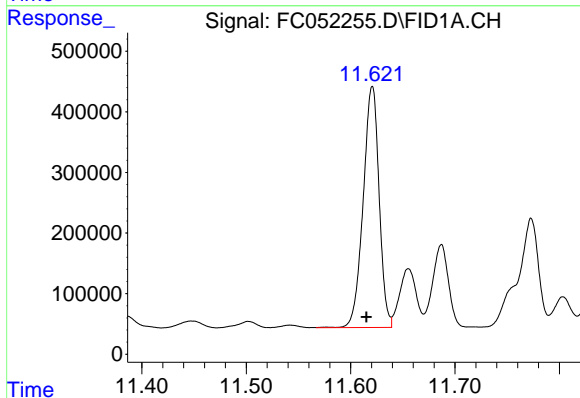


#7 n-Hexadecane (C16)

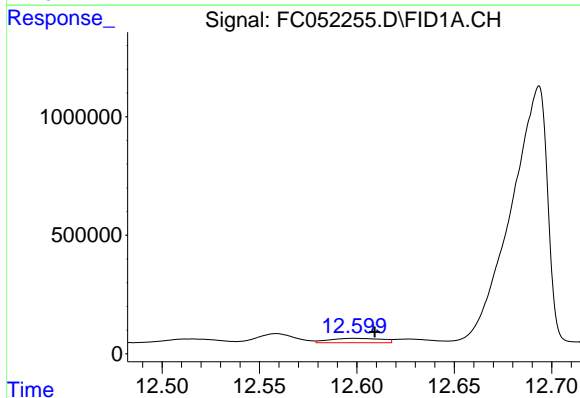
R.T.: 9.865 min
Delta R.T.: 0.013 min
Response: 722412
Conc: 6.04 ug/ml



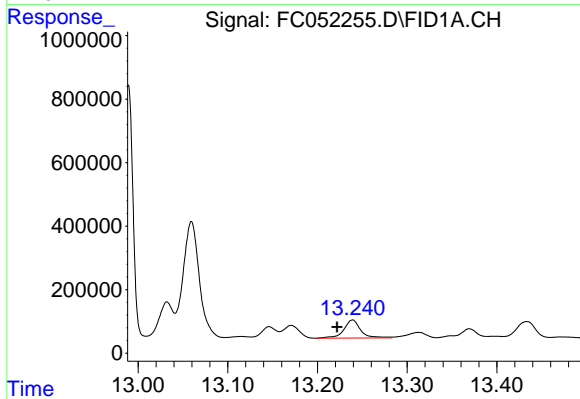
#8 n-Octadecane (C18)
 R.T.: 11.245 min
 Delta R.T.: -0.052 min
 Response: 90961
 Conc: 0.73 ug/ml



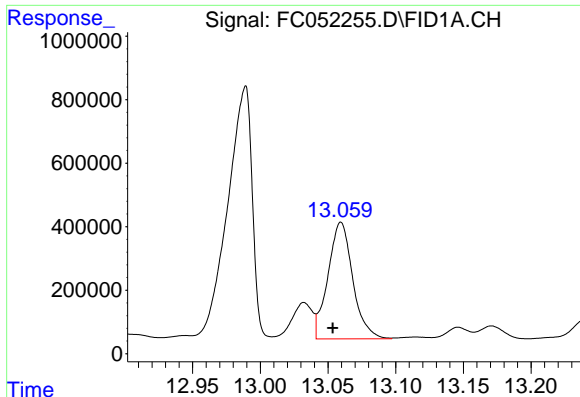
#9 ortho-Terphenyl (SURR)
 R.T.: 11.621 min
 Delta R.T.: 0.006 min
 Response: 4218781
 Conc: 31.99 ug/ml



#10 n-Eicosane (C20)
 R.T.: 12.599 min
 Delta R.T.: -0.010 min
 Response: 350418
 Conc: 2.84 ug/ml

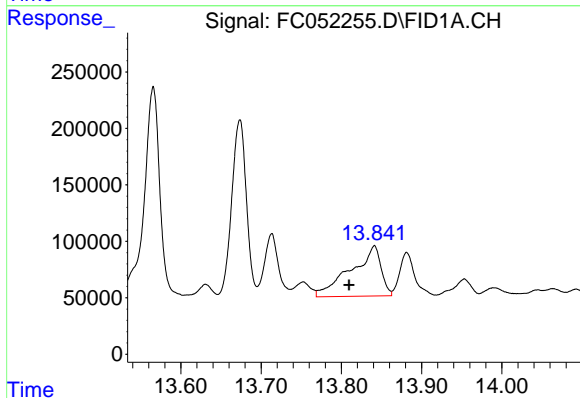


#11 n-Heneicosane (C21)
 R.T.: 13.239 min
 Delta R.T.: 0.018 min
 Response: 748528
 Conc: 6.13 ug/ml



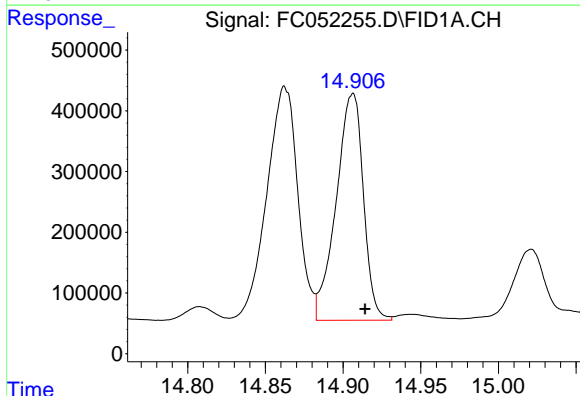
#12 1-chlorooctadecane (SURR)

R.T.: 13.060 min
 Delta R.T.: 0.006 min
 Response: 4683796
 Conc: 45.04 ug/ml



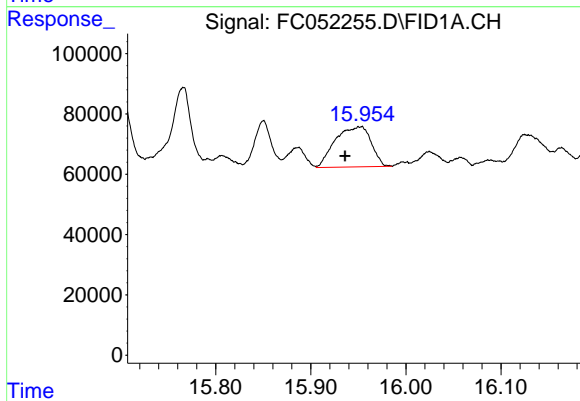
#13 n-Docosane (C22)

R.T.: 13.841 min
 Delta R.T.: 0.032 min
 Response: 1159020
 Conc: 9.63 ug/ml



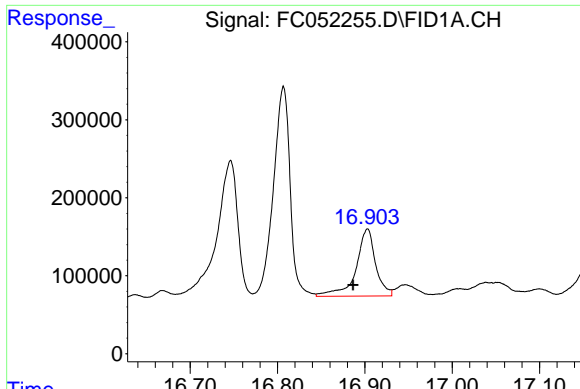
#14 n-Tetracosane (C24)

R.T.: 14.906 min
 Delta R.T.: -0.008 min
 Response: 4561330
 Conc: 39.12 ug/ml



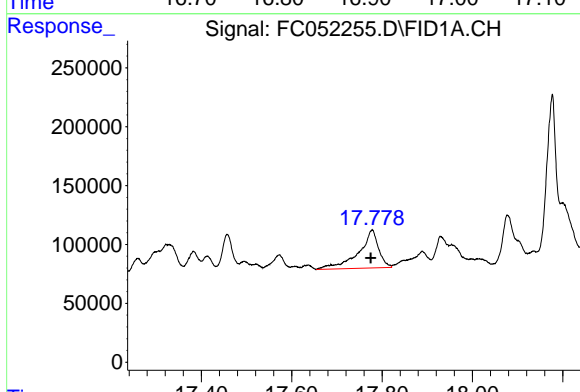
#15 n-Hexacosane (C26)

R.T.: 15.953 min
 Delta R.T.: 0.017 min
 Response: 349007
 Conc: 3.18 ug/ml



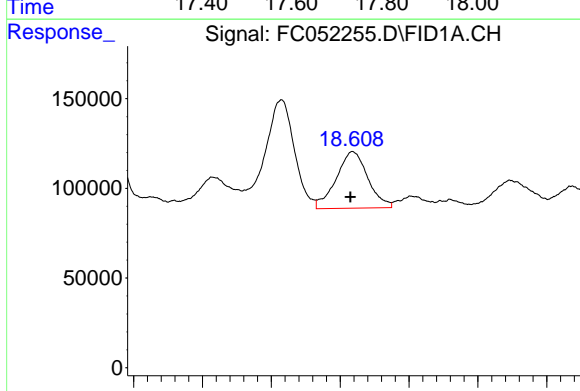
#16 n-Octacosane (C28)

R.T.: 16.903 min
Delta R.T.: 0.017 min
Response: 1343484
Conc: 13.11 ug/ml



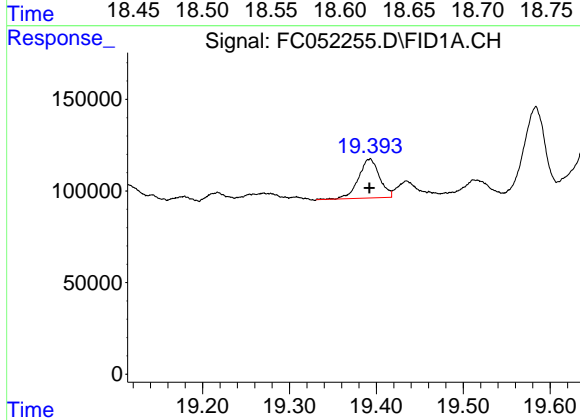
#17 n-Tricontane (C30)

R.T.: 17.778 min
Delta R.T.: 0.004 min
Response: 992571
Conc: 10.54 ug/ml



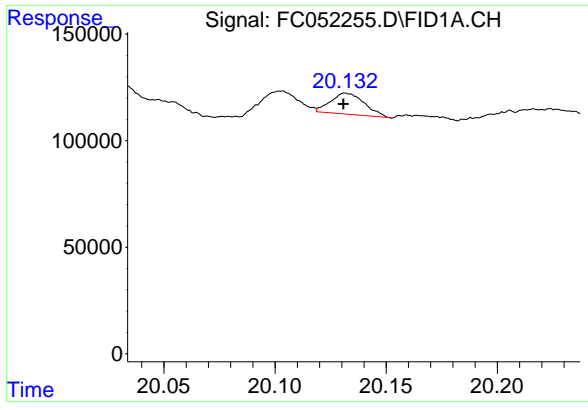
#18 n-Dotriacontane (C32)

R.T.: 18.609 min
Delta R.T.: 0.002 min
Response: 503149
Conc: 5.89 ug/ml



#19 n-Tetratriacontane (C34)

R.T.: 19.392 min
Delta R.T.: 0.000 min
Response: 357441
Conc: 4.61 ug/ml



#20 n-Hexatriacontane (C36)

R.T.: 20.132 min
Delta R.T.: 0.001 min
Response: 105265
Conc: 1.46 ug/ml