

Data Path : Z:\pestpcbsrv\HPCHEM1\FID_C\Data\FC030619AL\
 Data File : FC039654.D
 Signal(s) : FID1A.CH
 Acq On : 06 Mar 2019 19:13
 Operator : AJ\SJ
 Sample : K1753-09D
 Misc :
 ALS Vial : 12 Sample Multiplier: 1

Integration File: autoint1.e
 Quant Time: Mar 07 02:29:19 2019
 Quant Method : Z:\pestpcbsrv\HPCHEM1\FID_C\Method\Alaphatic EPH 022219.M
 Quant Title : GC Extractables
 QLast Update : Mon Feb 25 18:21:16 2019
 Response via : Initial Calibration
 Integrator: ChemStation 6890 Scale Mode: Large solvent peaks clipped

Volume Inj. : 1 ul
 Signal Phase : Rxi-1ms
 Signal Info : 20M x 0.18mm x 0.18um

Compound	R.T.	Response	Conc Units

System Monitoring Compounds			
9) S ortho-Terphenyl (SURR)	11.155	3010938	17.901 ug/ml
Spiked Amount	50.000	Recovery	= 35.80%
12) S 1-chlorooctadecane (S...	12.601	2146246	17.015 ug/ml
Spiked Amount	50.000	Recovery	= 34.03%
Target Compounds			
16) T n-Octacosane (C28)	16.407	52083	0.390 ug/ml
17) T n-Tricontane (C30)	17.290	145961	0.995 ug/ml
18) T n-Dotriacontane (C32)	18.117	99636	0.742 ug/ml
19) T n-Tetratriacontane (C34)	18.898	104328	0.917 ug/ml
21) T n-Octatriacontane (C38)	20.335	163300	1.779 ug/ml

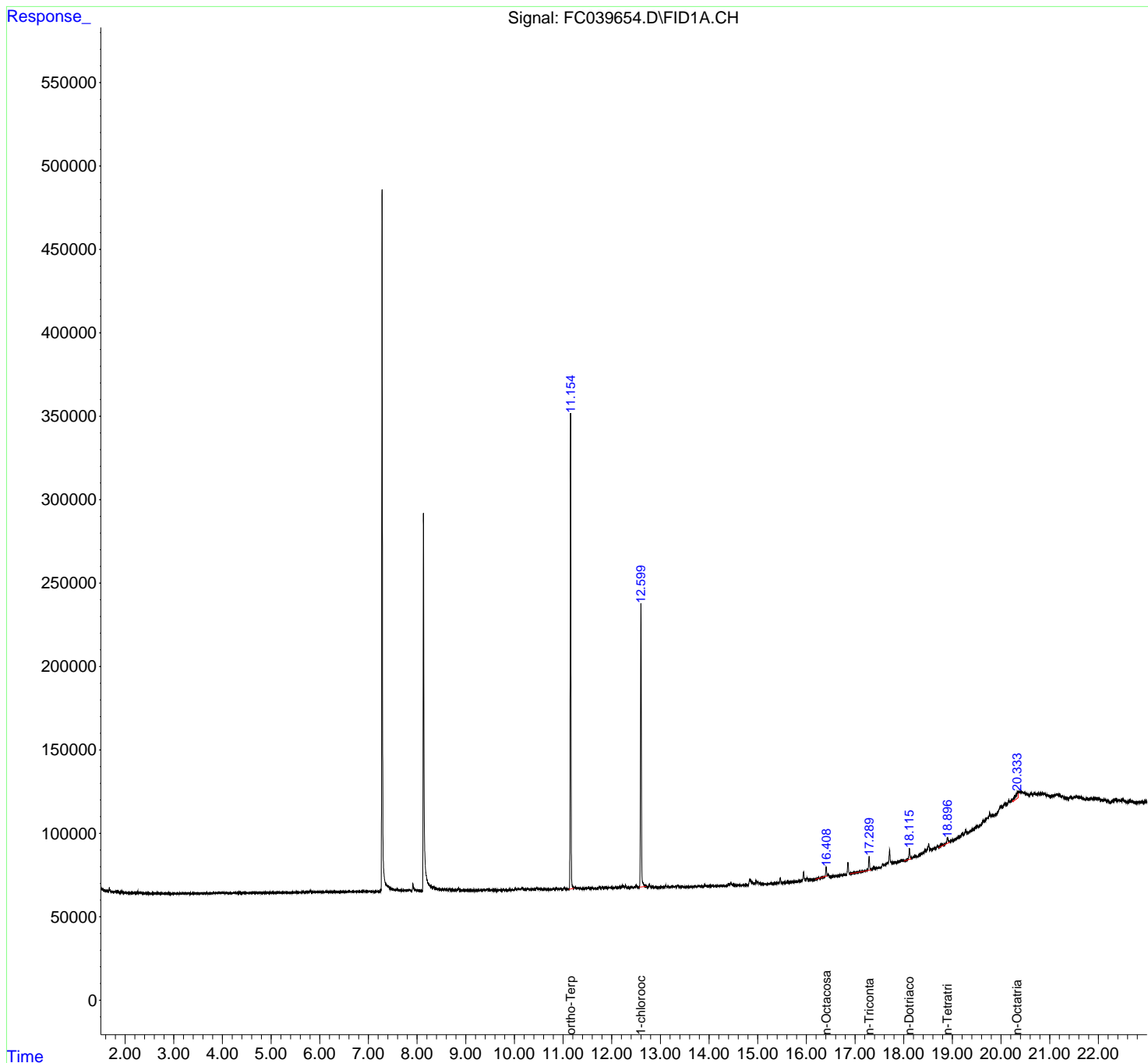
(f)=RT Delta > 1/2 Window

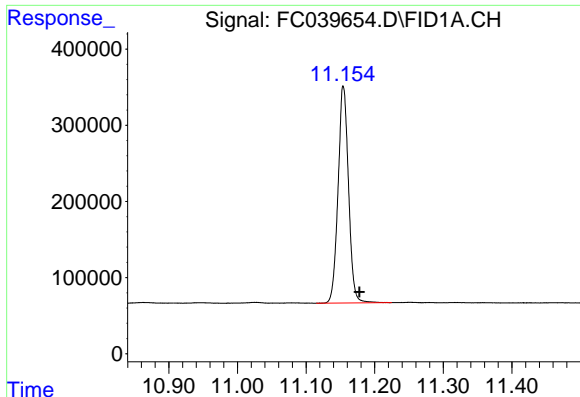
(m)=manual int.

Data Path : Z:\pestpcbsrv\HPCHEM1\FID_C\Data\FC030619AL\
Data File : FC039654.D
Signal(s) : FID1A.CH
Acq On : 06 Mar 2019 19:13
Operator : AJ\SJ
Sample : K1753-09D
Misc :
ALS Vial : 12 Sample Multiplier: 1

Integration File: autoint1.e
Quant Time: Mar 07 02:29:19 2019
Quant Method : Z:\pestpcbsrv\HPCHEM1\FID_C\Method\Alaphatic EPH 022219.M
Quant Title : GC Extractables
QLast Update : Mon Feb 25 18:21:16 2019
Response via : Initial Calibration
Integrator: ChemStation 6890 Scale Mode: Large solvent peaks clipped

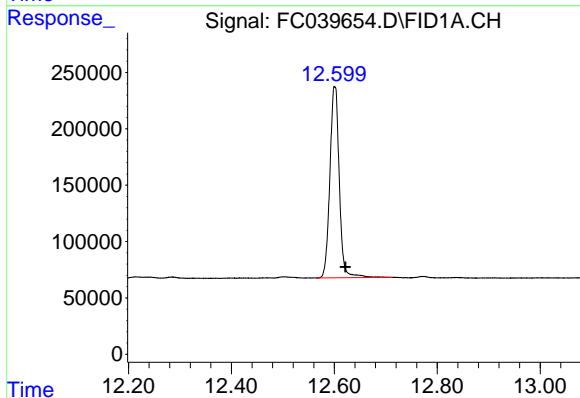
Volume Inj. : 1 ul
Signal Phase : Rxi-1ms
Signal Info : 20M x 0.18mm x 0.18um





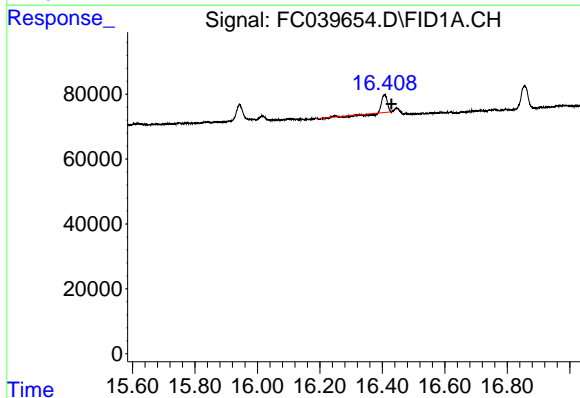
#9 ortho-Terphenyl (SURR)

R.T.: 11.155 min
 Delta R.T.: -0.023 min
 Response: 3010938
 Conc: 17.90 ug/ml



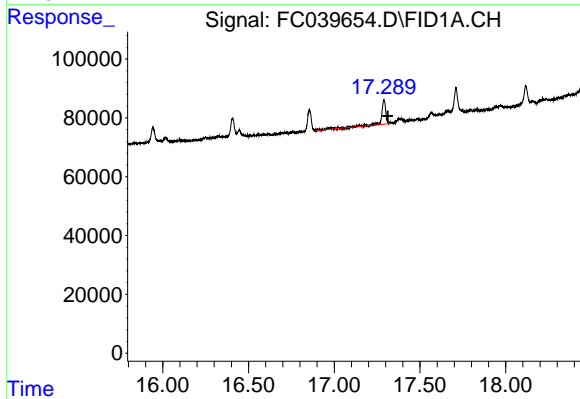
#12 1-chlorooctadecane (SURR)

R.T.: 12.601 min
 Delta R.T.: -0.021 min
 Response: 2146246
 Conc: 17.01 ug/ml



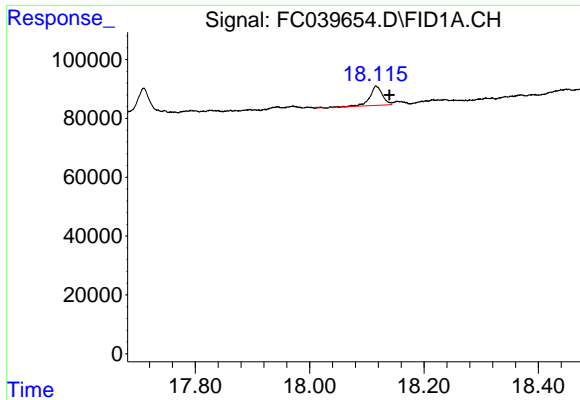
#16 n-Octacosane (C28)

R.T.: 16.407 min
 Delta R.T.: -0.022 min
 Response: 52083
 Conc: 0.39 ug/ml



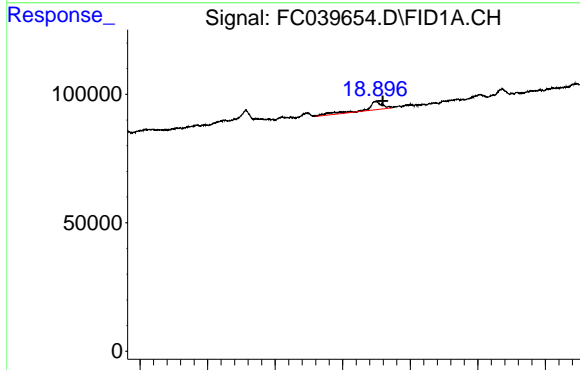
#17 n-Tricontane (C30)

R.T.: 17.290 min
 Delta R.T.: -0.021 min
 Response: 145961
 Conc: 0.99 ug/ml



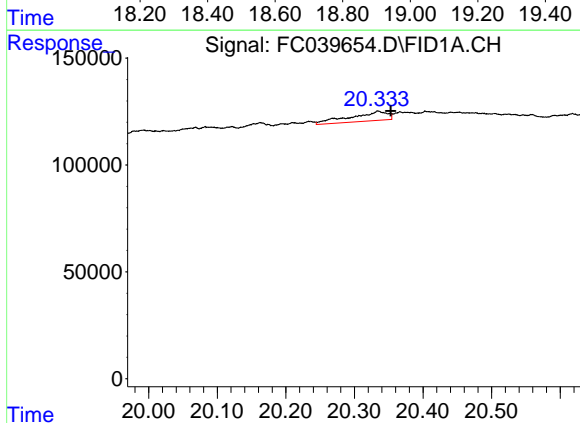
#18 n-Dotriacontane (C32)

R.T.: 18.117 min
 Delta R.T.: -0.022 min
 Response: 99636
 Conc: 0.74 ug/ml



#19 n-Tetraatriacontane (C34)

R.T.: 18.898 min
 Delta R.T.: -0.021 min
 Response: 104328
 Conc: 0.92 ug/ml



#21 n-Octatriacontane (C38)

R.T.: 20.335 min
 Delta R.T.: -0.018 min
 Response: 163300
 Conc: 1.78 ug/ml