

Data Path : Z:\pestpcbsrv\HPCHEM1\FID\_C\Data\FC030722AL\  
Data File : FC058591.D  
Signal(s) : FID1A.CH  
Acq On : 07 Mar 2022 10:38  
Operator : UA/NP  
Sample : I.BLK  
Misc :  
ALS Vial : 1 Sample Multiplier: 1

Instrument :  
FID\_C  
ClientSampleId :

Integration File: autoint1.e  
Quant Time: Mar 08 02:22:18 2022  
Quant Method : Z:\pestpcbsrv\HPCHEM1\FID\_C\Method\Aliphatic EPH 022322.M  
Quant Title : GC Extractables  
QLast Update : Wed Feb 23 17:15:11 2022  
Response via : Initial Calibration  
Integrator: ChemStation 6890 Scale Mode: Large solvent peaks clipped

Volume Inj. : 1 ul  
Signal Phase : Rxi-1ms  
Signal Info : 20M x 0.18mm x 0.18um

Compound	R.T.	Response	Conc Units
-----			
System Monitoring Compounds			
Target Compounds			
21) T n-Octatriacontane (C38)	20.498f	39667	0.456 ug/ml

(f)=RT Delta > 1/2 Window

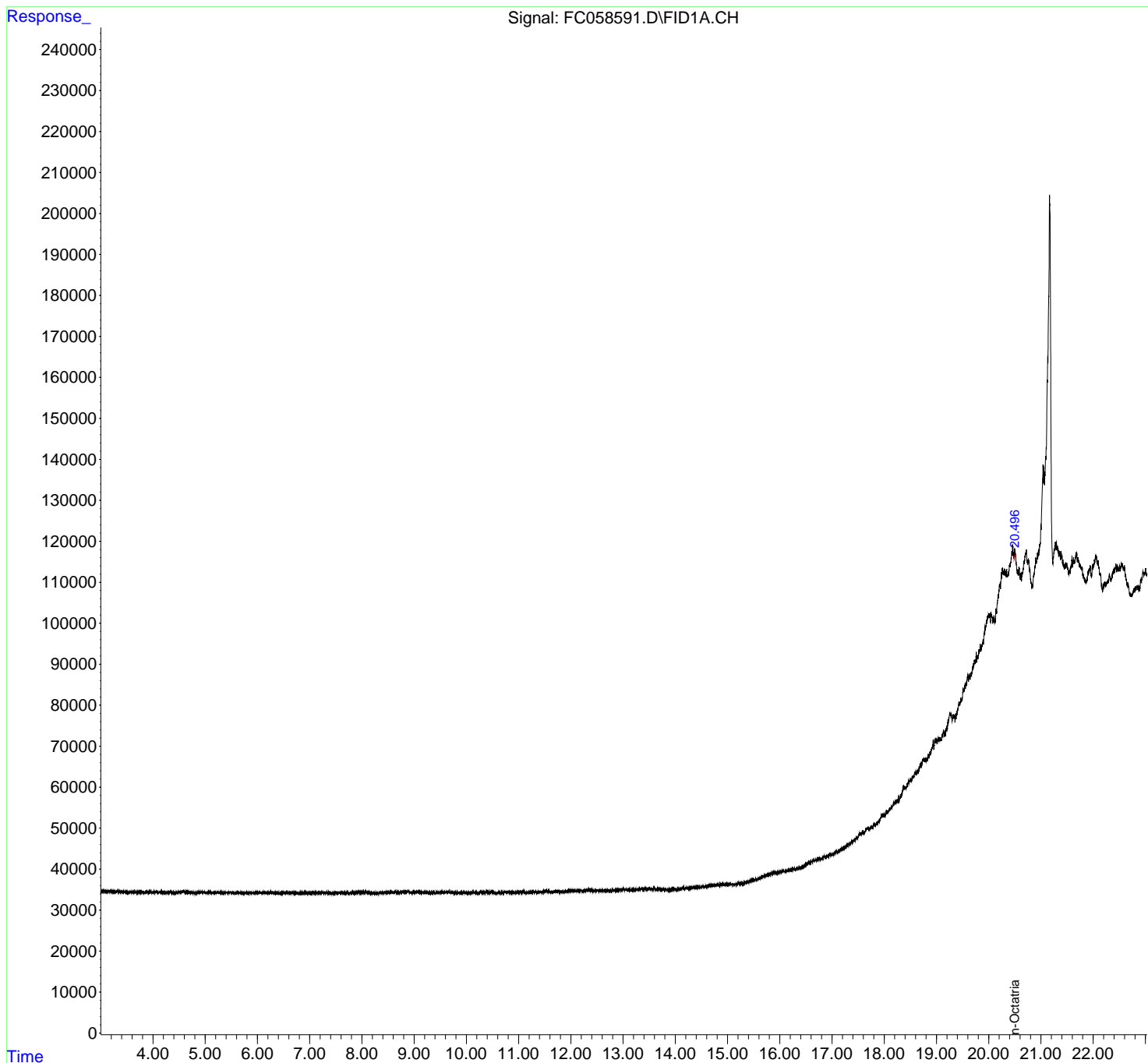
(m)=manual int.

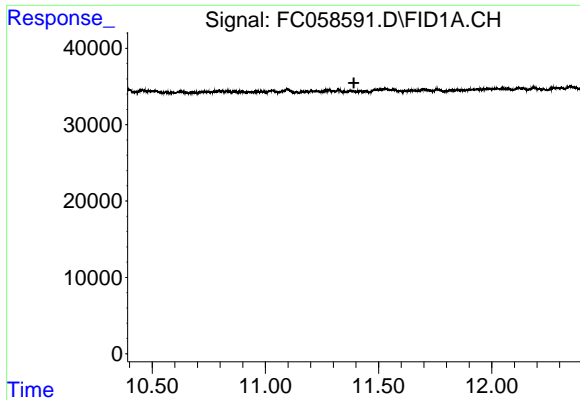
Data Path : Z:\pestpcbsrv\HPCHEM1\FID\_C\Data\FC030722AL\  
Data File : FC058591.D  
Signal(s) : FID1A.CH  
Acq On : 07 Mar 2022 10:38  
Operator : UA/NP  
Sample : I.BLK  
Misc :  
ALS Vial : 1 Sample Multiplier: 1

Instrument :  
FID\_C  
ClientSampleId :

Integration File: autoint1.e  
Quant Time: Mar 08 02:22:18 2022  
Quant Method : Z:\pestpcbsrv\HPCHEM1\FID\_C\Method\Aliphatic EPH 022322.M  
Quant Title : GC Extractables  
QLast Update : Wed Feb 23 17:15:11 2022  
Response via : Initial Calibration  
Integrator: ChemStation 6890 Scale Mode: Large solvent peaks clipped

Volume Inj. : 1 ul  
Signal Phase : Rxi-1ms  
Signal Info : 20M x 0.18mm x 0.18um

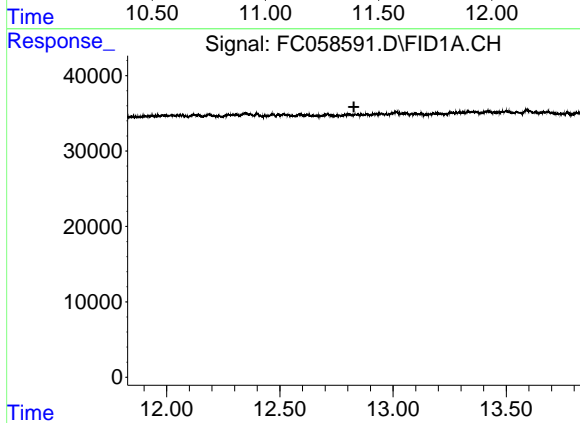




#9 ortho-Terphenyl (SURR)

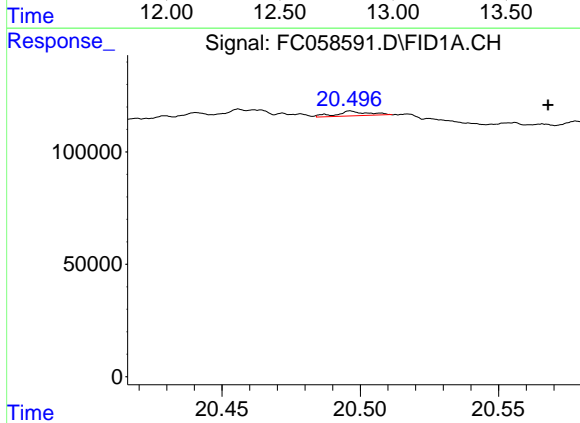
R.T.: 0.000 min  
 Exp R.T.: 11.391 min  
 Response: 0  
 Conc: N.D.

Instrument :  
 FID\_C  
 ClientSampleId :



#12 1-chlorooctadecane (SURR)

R.T.: 0.000 min  
 Exp R.T.: 12.827 min  
 Response: 0  
 Conc: N.D.



#21 n-Octatriacontane (C38)

R.T.: 20.498 min  
 Delta R.T.: -0.070 min  
 Response: 39667  
 Conc: 0.46 ug/ml