

Data Path : Z:\pestpcbsrv\HPCHEM1\FID_C\Data\FC030821AL\
 Data File : FC052316.D
 Signal(s) : FID1A.CH
 Acq On : 09 Mar 2021 2:03
 Operator : DD\AJ
 Sample : M1582-03
 Misc :
 ALS Vial : 26 Sample Multiplier: 1

Instrument :
 FID_C
 ClientSampleId :

Integration File: autoint1.e
 Quant Time: Mar 09 03:00:15 2021
 Quant Method : Z:\pestpcbsrv\HPCHEM1\FID_C\Method\Alaphatic EPH 030321.M
 Quant Title : GC Extractables
 QLast Update : Thu Mar 04 03:56:17 2021
 Response via : Initial Calibration
 Integrator: ChemStation 6890 Scale Mode: Large solvent peaks clipped

Volume Inj. : 1 ul
 Signal Phase : Rxi-1ms
 Signal Info : 20M x 0.18mm x 0.18um

Compound	R.T.	Response	Conc Units

System Monitoring Compounds			
9) S ortho-Terphenyl (SURR)	11.611	4088689	31.004 ug/ml
Spiked Amount	50.000	Recovery	= 62.01%
12) S 1-chlorooctadecane (S...	13.049	3306724	31.795 ug/ml
Spiked Amount	50.000	Recovery	= 63.59%
Target Compounds			
16) T n-Octacosane (C28)	16.934	211060	2.059 ug/ml

(f)=RT Delta > 1/2 Window

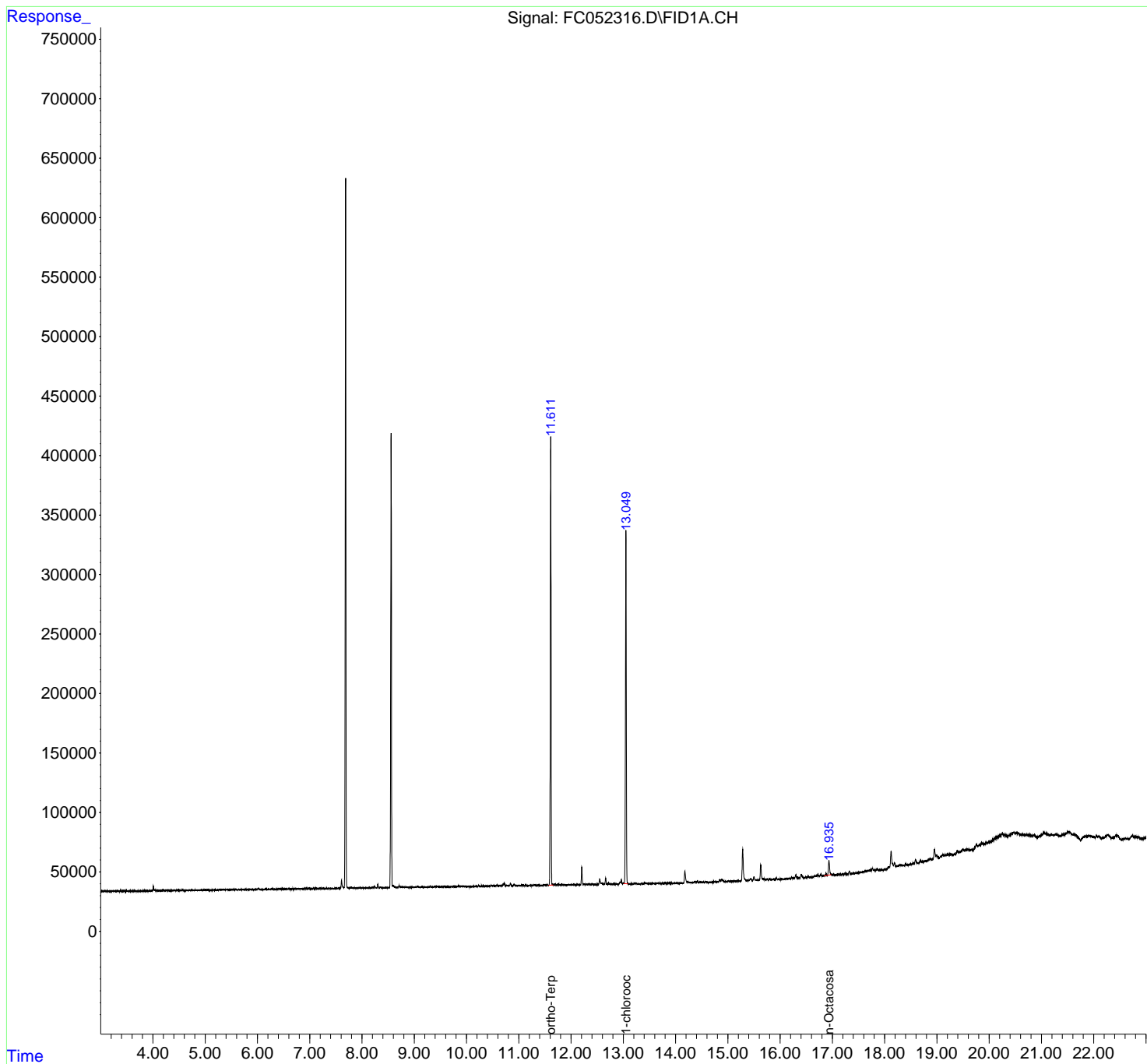
(m)=manual int.

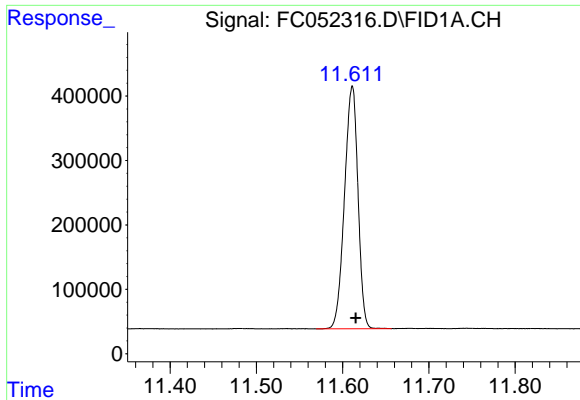
Data Path : Z:\pestpcbsrv\HPCHEM1\FID_C\Data\FC030821AL\
Data File : FC052316.D
Signal(s) : FID1A.CH
Acq On : 09 Mar 2021 2:03
Operator : DD\AJ
Sample : M1582-03
Misc :
ALS Vial : 26 Sample Multiplier: 1

Instrument :
FID_C
ClientSampleId :

Integration File: autoint1.e
Quant Time: Mar 09 03:00:15 2021
Quant Method : Z:\pestpcbsrv\HPCHEM1\FID_C\Method\Alaphatic EPH 030321.M
Quant Title : GC Extractables
QLast Update : Thu Mar 04 03:56:17 2021
Response via : Initial Calibration
Integrator: ChemStation 6890 Scale Mode: Large solvent peaks clipped

Volume Inj. : 1 ul
Signal Phase : Rxi-1ms
Signal Info : 20M x 0.18mm x 0.18um

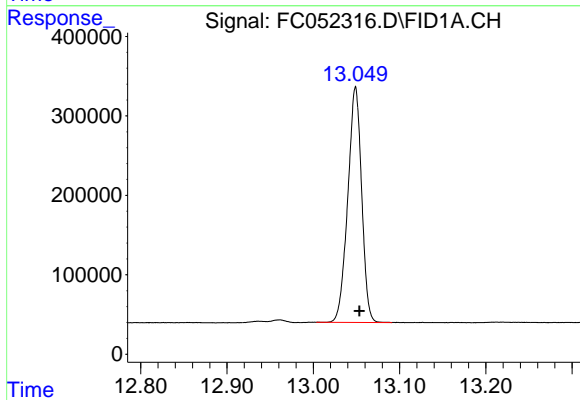




#9 ortho-Terphenyl (SURR)

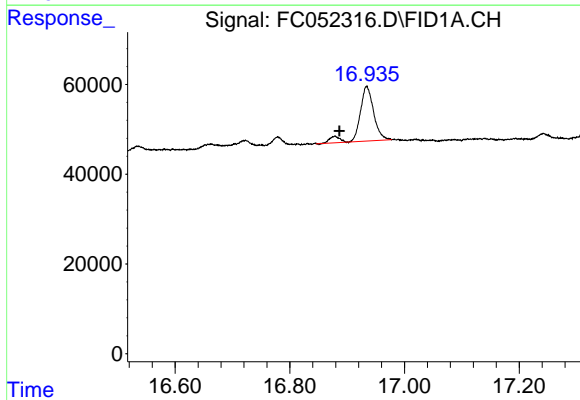
R.T.: 11.611 min
Delta R.T.: -0.004 min
Response: 4088689
Conc: 31.00 ug/ml

Instrument :
FID_C
ClientSampleId :



#12 1-chlorooctadecane (SURR)

R.T.: 13.049 min
Delta R.T.: -0.005 min
Response: 3306724
Conc: 31.80 ug/ml



#16 n-Octacosane (C28)

R.T.: 16.934 min
Delta R.T.: 0.048 min
Response: 211060
Conc: 2.06 ug/ml