

Data Path : Z:\pestpcbsrv\HPCHEM1\FID\_C\Data\FC030821AL\  
 Data File : FC052301.D  
 Signal(s) : FID1A.CH  
 Acq On : 08 Mar 2021 16:28  
 Operator : DD\AJ  
 Sample : M1565-07RE  
 Misc :  
 ALS Vial : 13 Sample Multiplier: 1

Instrument :  
 FID\_C  
 ClientSampleId :  
 TP-4RE

Integration File: autoint1.e  
 Quant Time: Mar 09 02:57:04 2021  
 Quant Method : Z:\pestpcbsrv\HPCHEM1\FID\_C\Method\Alaphatic EPH 030321.M  
 Quant Title : GC Extractables  
 QLast Update : Thu Mar 04 03:56:17 2021  
 Response via : Initial Calibration  
 Integrator: ChemStation 6890 Scale Mode: Large solvent peaks clipped

Volume Inj. : 1 ul  
 Signal Phase : Rxi-1ms  
 Signal Info : 20M x 0.18mm x 0.18um

Compound	R.T.	Response	Conc Units
-----			
System Monitoring Compounds			
9) S ortho-Terphenyl (SURR)	11.612	2859504	21.683 ug/ml
Spiked Amount	50.000	Recovery	= 43.37%
12) S 1-chlorooctadecane (S...	13.048	1987403	19.110 ug/ml
Spiked Amount	50.000	Recovery	= 38.22%

Target Compounds

-----

(f)=RT Delta > 1/2 Window

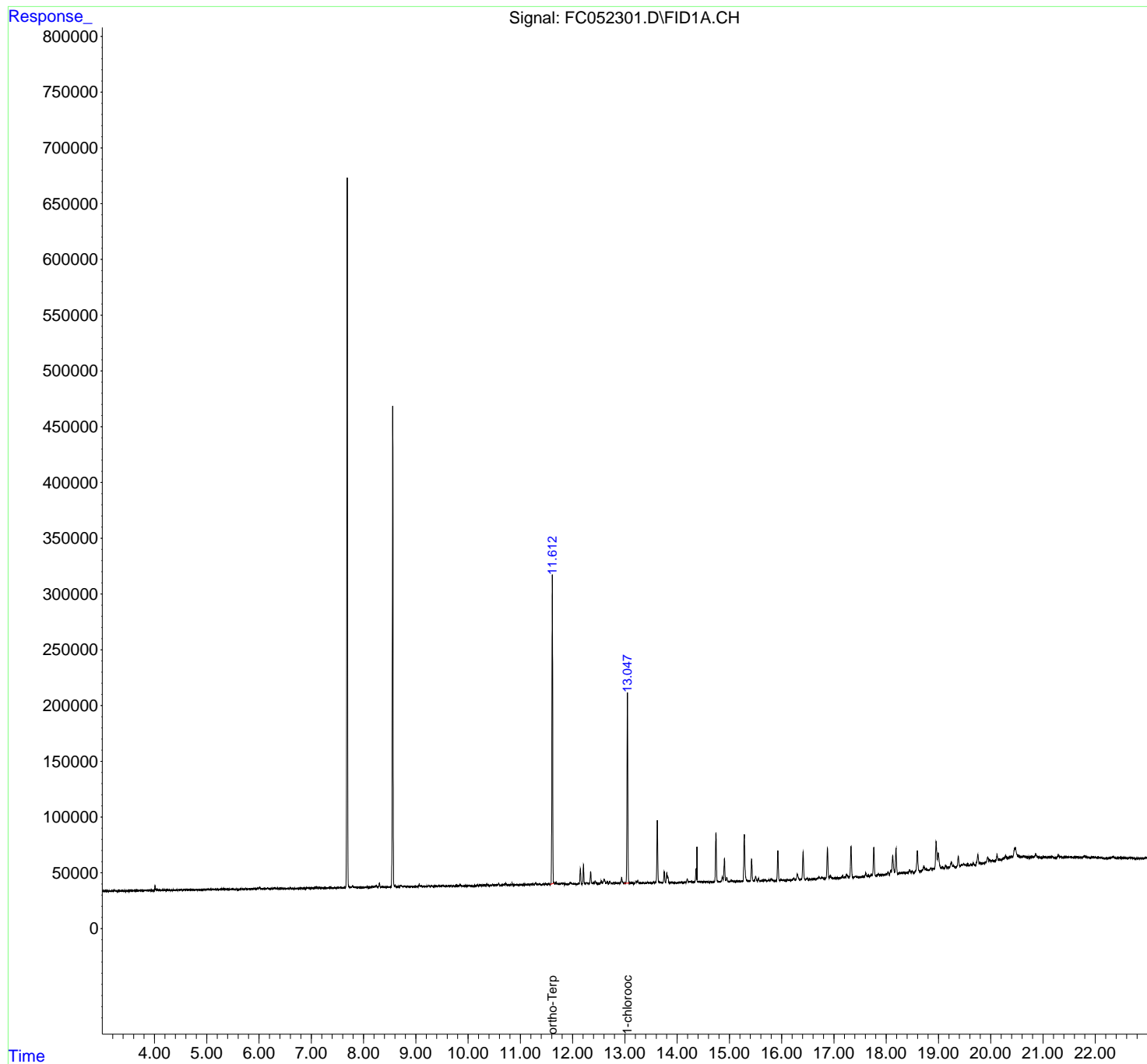
(m)=manual int.

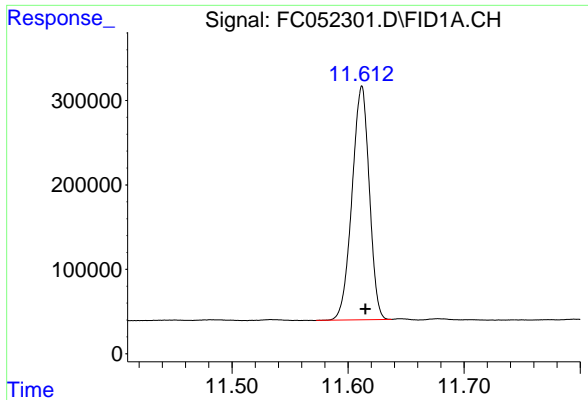
Data Path : Z:\pestpcbsrv\HPCHEM1\FID\_C\Data\FC030821AL\  
Data File : FC052301.D  
Signal(s) : FID1A.CH  
Acq On : 08 Mar 2021 16:28  
Operator : DD\AJ  
Sample : M1565-07RE  
Misc :  
ALS Vial : 13 Sample Multiplier: 1

Instrument :  
FID\_C  
ClientSampleId :  
TP-4RE

Integration File: autoint1.e  
Quant Time: Mar 09 02:57:04 2021  
Quant Method : Z:\pestpcbsrv\HPCHEM1\FID\_C\Method\Alaphatic EPH 030321.M  
Quant Title : GC Extractables  
QLast Update : Thu Mar 04 03:56:17 2021  
Response via : Initial Calibration  
Integrator: ChemStation 6890 Scale Mode: Large solvent peaks clipped

Volume Inj. : 1 ul  
Signal Phase : Rxi-1ms  
Signal Info : 20M x 0.18mm x 0.18um

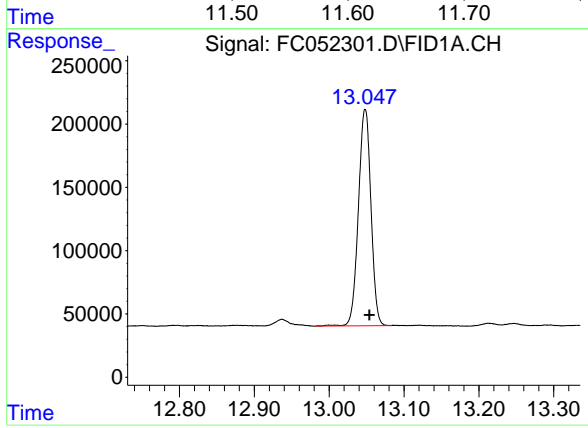




#9 ortho-Terphenyl (SURR)

R.T.: 11.612 min  
Delta R.T.: -0.003 min  
Response: 2859504  
Conc: 21.68 ug/ml

Instrument :  
FID\_C  
ClientSampled :  
TP-4RE



#12 1-chlorooctadecane (SURR)

R.T.: 13.048 min  
Delta R.T.: -0.005 min  
Response: 1987403  
Conc: 19.11 ug/ml