

Data Path : Z:\pestpcbsrv\HPCHEM1\FID\_C\Data\FC030920AL\  
 Data File : FC046209.D  
 Signal(s) : FID1A.CH  
 Acq On : 09 Mar 2020 19:09  
 Operator : DD\AJ  
 Sample : L1824-01MS  
 Misc :  
 ALS Vial : 7 Sample Multiplier: 1

Instrument :  
 FID\_C  
 ClientSampleId :  
 INDIAN-ISLAND-(1)MS

Integration File: autoint1.e  
 Quant Time: Mar 10 08:45:17 2020  
 Quant Method : Z:\pestpcbsrv\HPCHEM1\FID\_C\Method\Alaphatic EPH 022120.M  
 Quant Title : GC Extractables  
 QLast Update : Sat Feb 22 03:16:45 2020  
 Response via : Initial Calibration  
 Integrator: ChemStation 6890 Scale Mode: Large solvent peaks clipped

Volume Inj. : 1 ul  
 Signal Phase : Rxi-1ms  
 Signal Info : 20M x 0.18mm x 0.18um

Compound	R.T.	Response	Conc Units
-----			
System Monitoring Compounds			
12) S 1-chlorooctadecane (S...	13.181	2257673	25.166 ug/ml
Spiked Amount 50.000		Recovery =	50.33%
Target Compounds			
1) T n-Nonane (C9)	3.538	2253846	22.359 ug/ml
2) T n-Decane (C10)	4.608	2779651	27.559 ug/ml
4) T n-Dodecane (C12)	6.617	3172488	31.097 ug/ml
6) T n-Tetradecane (C14)	8.402	3439099	33.596 ug/ml
7) T n-Hexadecane (C16)	9.995	3474196	33.555 ug/ml
8) T n-Octadecane (C18)	11.431	3519129	33.476 ug/ml
10) T n-Eicosane (C20)	12.735	3398826	32.152 ug/ml
11) T n-Heneicosane (C21)	13.344	3334760	31.266 ug/ml
13) T n-Docosane (C22)	13.928	3313776	31.186 ug/ml
14) T n-Tetracosane (C24)	15.025	3212345	30.014 ug/ml
15) T n-Hexacosane (C26)	16.042	3092491	29.096 ug/ml
16) T n-Octacosane (C28)	16.987	3048456	29.117 ug/ml
17) T n-Tricontane (C30)	17.871	3038682	30.154 ug/ml
18) T n-Dotriacontane (C32)	18.700	2922682	34.150 ug/ml
19) T n-Tetratriacontane (C34)	19.479	2813318	38.762 ug/ml
20) T n-Hexatriacontane (C36)	20.216	2605682	38.529 ug/ml
21) T n-Octatriacontane (C38)	20.980	2360611	39.056 ug/ml
22) T n-Tetracontane (C40)	21.941	2327728	37.024 ug/ml
-----			

(f)=RT Delta > 1/2 Window

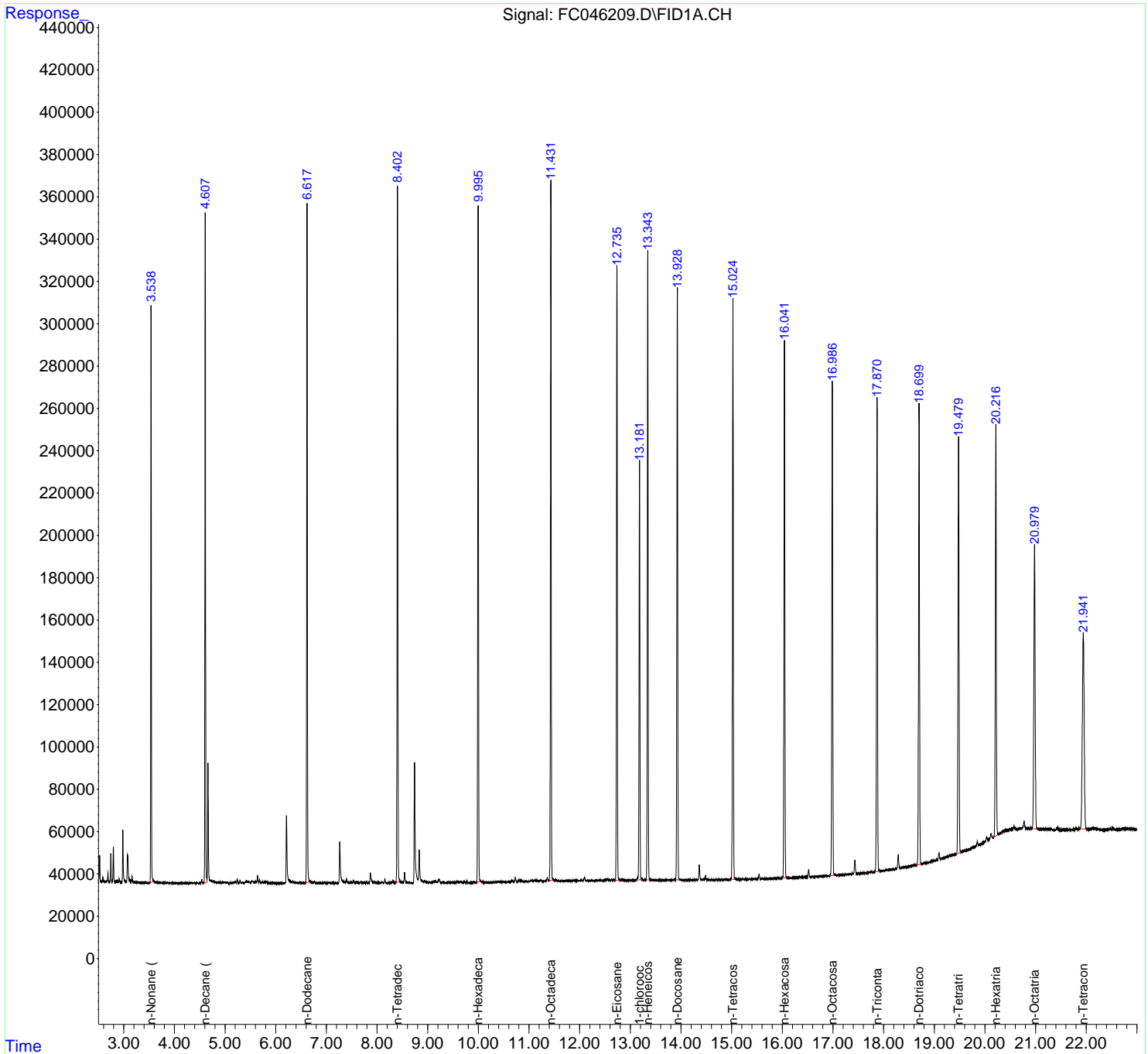
(m)=manual int.

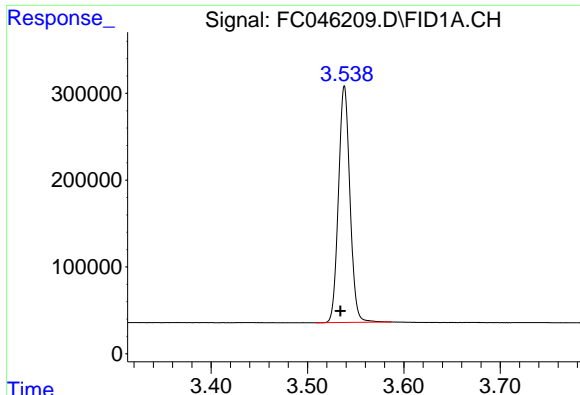
Data Path : Z:\pestpcbsrv\HPCHEM1\FID\_C\Data\FC030920AL\  
 Data File : FC046209.D  
 Signal(s) : FID1A.CH  
 Acq On : 09 Mar 2020 19:09  
 Operator : DD\AJ  
 Sample : L1824-01MS  
 Misc :  
 ALS Vial : 7 Sample Multiplier: 1

**Instrument :**  
 FID\_C  
**Client Sampled :**  
 INDIAN-ISLAND-(1)MS

Integration File: autoint1.e  
 Quant Time: Mar 10 08:45:17 2020  
 Quant Method : Z:\pestpcbsrv\HPCHEM1\FID\_C\Method\Aliphatic EPH 022120.M  
 Quant Title : GC Extractables  
 QLast Update : Sat Feb 22 03:16:45 2020  
 Response via : Initial Calibration  
 Integrator: ChemStation 6890 Scale Mode: Large solvent peaks clipped

Volume Inj. : 1 ul  
 Signal Phase : Rxi-1ms  
 Signal Info : 20M x 0.18mm x 0.18um

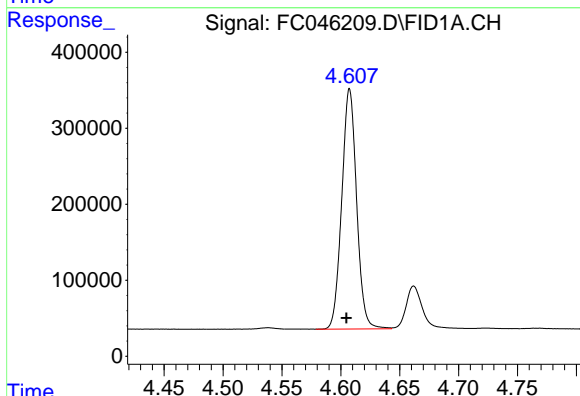




#1 n-Nonane (C9)

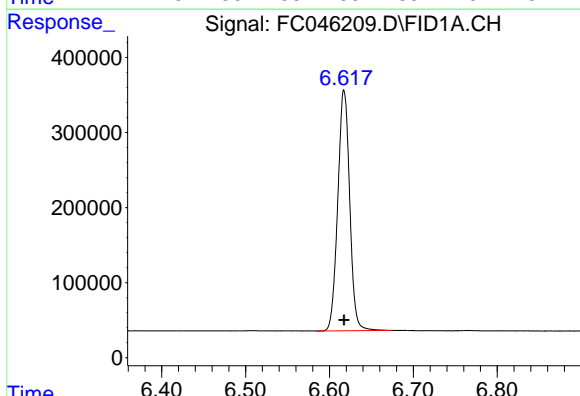
R.T.: 3.538 min  
 Delta R.T.: 0.004 min  
 Response: 2253846  
 Conc: 22.36 ug/ml

Instrument :  
 FID\_C  
 ClientSampleId :  
 INDIAN-ISLAND-(1)MS



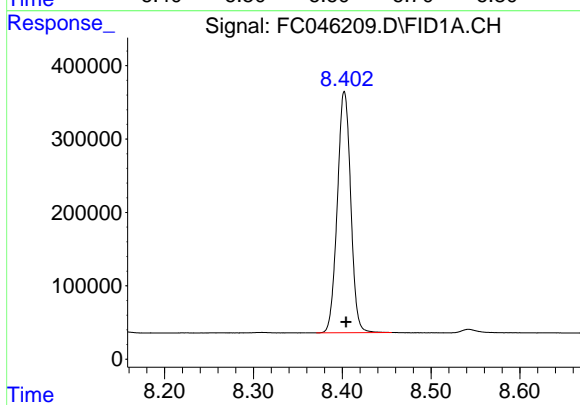
#2 n-Decane (C10)

R.T.: 4.608 min  
 Delta R.T.: 0.003 min  
 Response: 2779651  
 Conc: 27.56 ug/ml



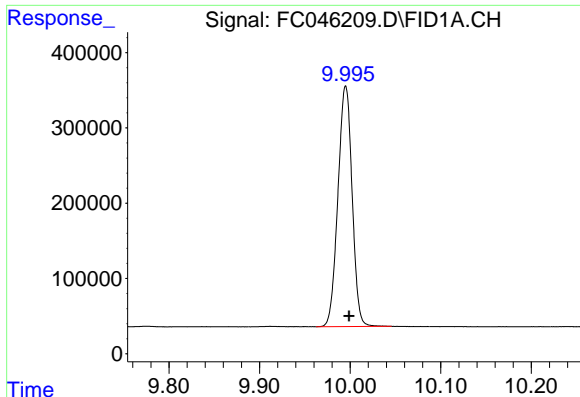
#4 n-Dodecane (C12)

R.T.: 6.617 min  
 Delta R.T.: 0.000 min  
 Response: 3172488  
 Conc: 31.10 ug/ml



#6 n-Tetradecane (C14)

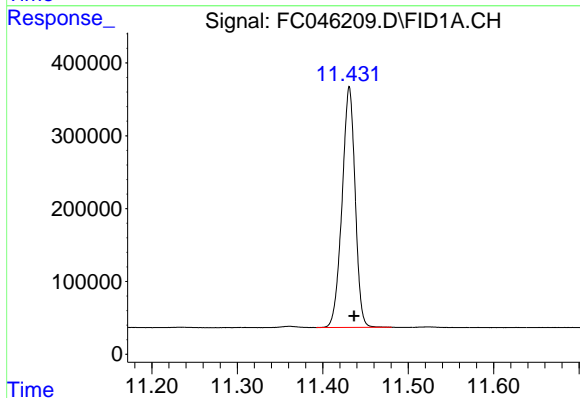
R.T.: 8.402 min  
 Delta R.T.: -0.002 min  
 Response: 3439099  
 Conc: 33.60 ug/ml



#7 n-Hexadecane (C16)

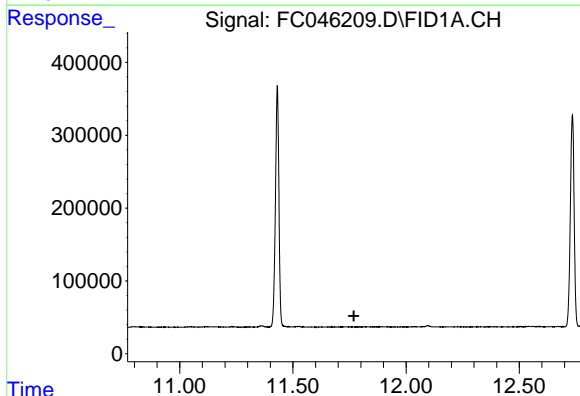
R.T.: 9.995 min  
 Delta R.T.: -0.004 min  
 Response: 3474196  
 Conc: 33.56 ug/ml

Instrument :  
 FID\_C  
 ClientSampleId :  
 INDIAN-ISLAND-(1)MS



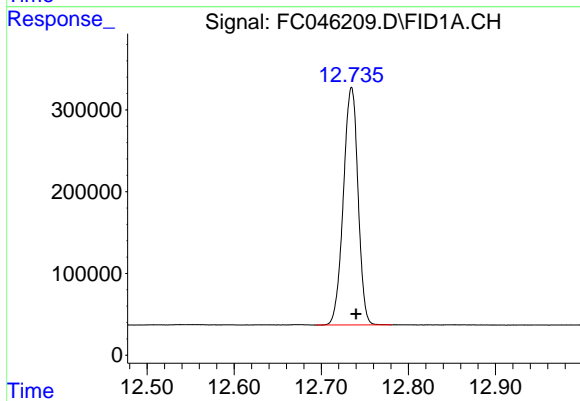
#8 n-Octadecane (C18)

R.T.: 11.431 min  
 Delta R.T.: -0.006 min  
 Response: 3519129  
 Conc: 33.48 ug/ml



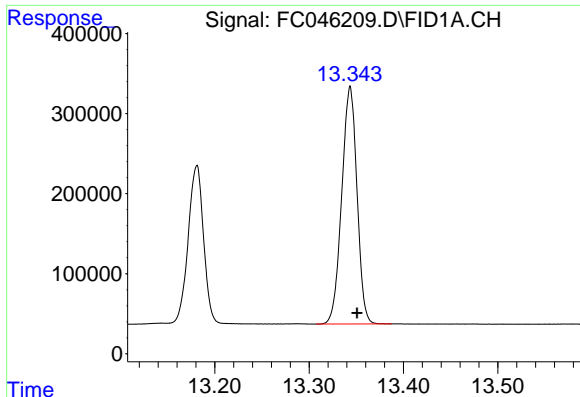
#9 ortho-Terphenyl (SURRE)

R.T.: 0.000 min  
 Exp R.T. : 11.770 min  
 Response: 0  
 Conc: N.D.



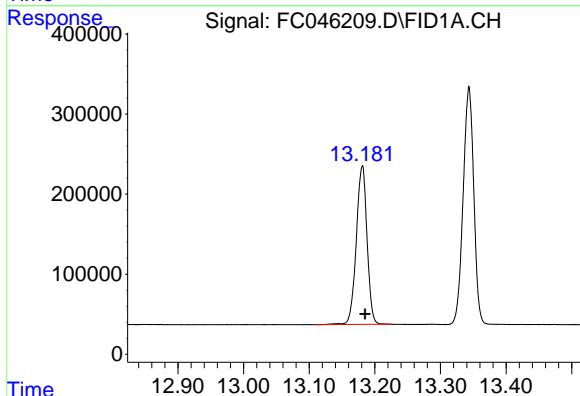
#10 n-Eicosane (C20)

R.T.: 12.735 min  
 Delta R.T.: -0.005 min  
 Response: 3398826  
 Conc: 32.15 ug/ml

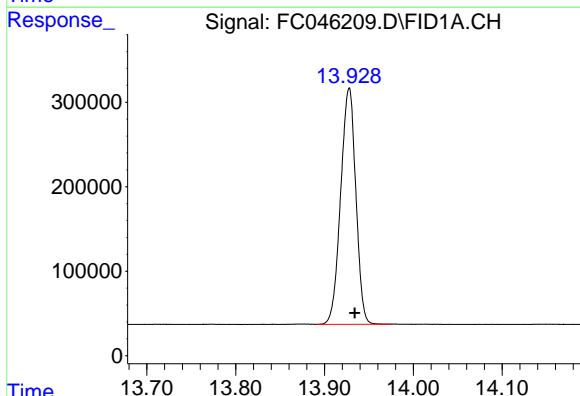


#11 n-Heneicosane (C21)  
 R.T.: 13.344 min  
 Delta R.T.: -0.007 min  
 Response: 3334760  
 Conc: 31.27 ug/ml

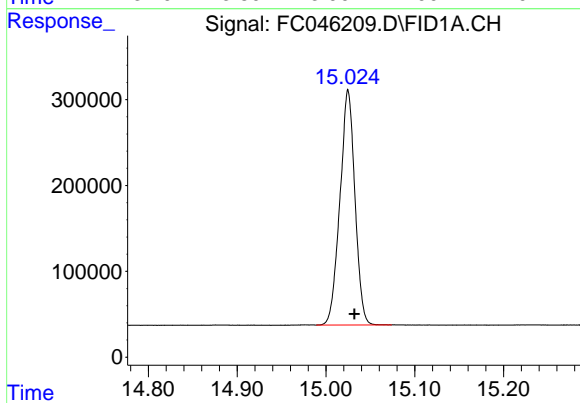
Instrument :  
 FID\_C  
 ClientSampleId :  
 INDIAN-ISLAND-(1)MS



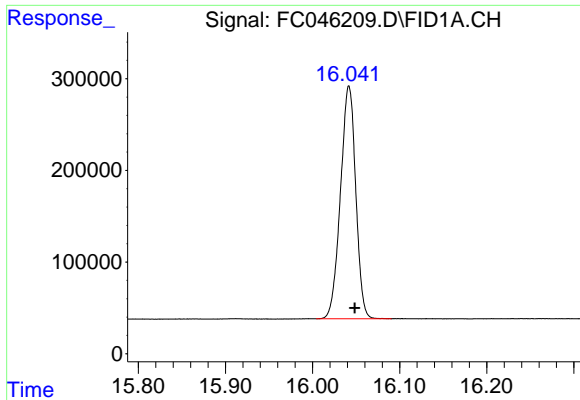
#12 1-chlorooctadecane (SURR)  
 R.T.: 13.181 min  
 Delta R.T.: -0.004 min  
 Response: 2257673  
 Conc: 25.17 ug/ml



#13 n-Docosane (C22)  
 R.T.: 13.928 min  
 Delta R.T.: -0.006 min  
 Response: 3313776  
 Conc: 31.19 ug/ml

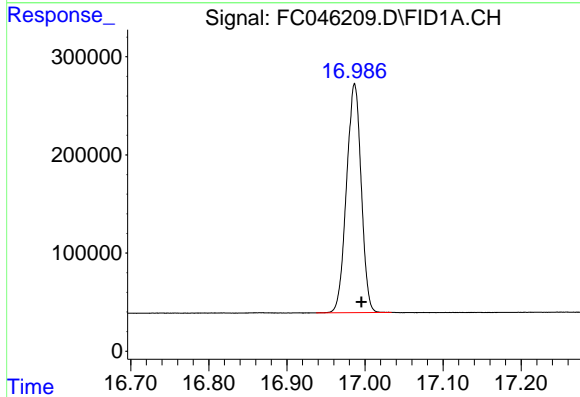


#14 n-Tetracosane (C24)  
 R.T.: 15.025 min  
 Delta R.T.: -0.007 min  
 Response: 3212345  
 Conc: 30.01 ug/ml

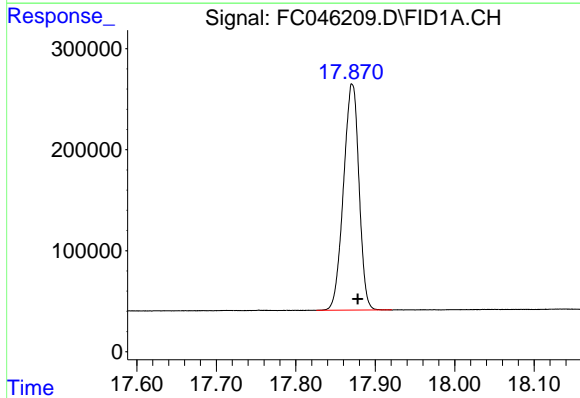


#15 n-Hexacosane (C26)  
 R.T.: 16.042 min  
 Delta R.T.: -0.007 min  
 Response: 3092491  
 Conc: 29.10 ug/ml

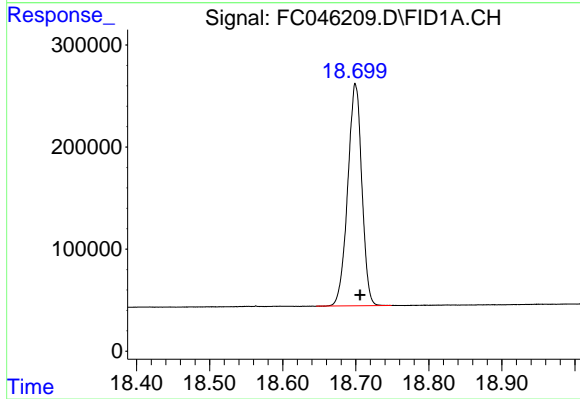
Instrument :  
 FID\_C  
 ClientSampleId :  
 INDIAN-ISLAND-(1)MS



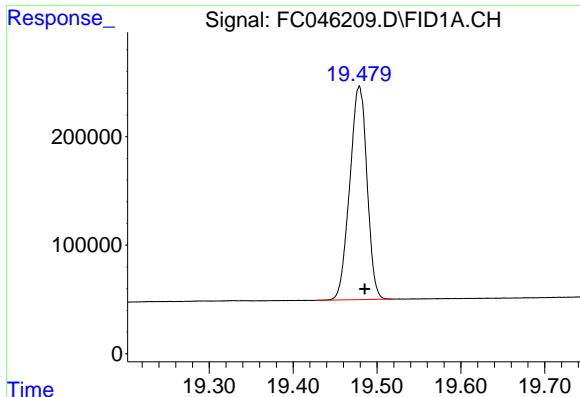
#16 n-Octacosane (C28)  
 R.T.: 16.987 min  
 Delta R.T.: -0.009 min  
 Response: 3048456  
 Conc: 29.12 ug/ml



#17 n-Tricontane (C30)  
 R.T.: 17.871 min  
 Delta R.T.: -0.007 min  
 Response: 3038682  
 Conc: 30.15 ug/ml



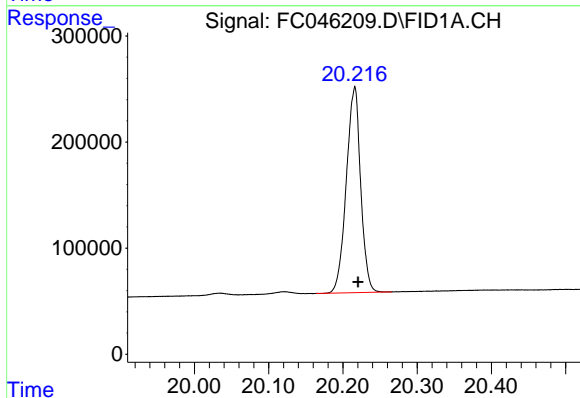
#18 n-Dotriacontane (C32)  
 R.T.: 18.700 min  
 Delta R.T.: -0.006 min  
 Response: 2922682  
 Conc: 34.15 ug/ml



#19 n-Tetracontane (C34)

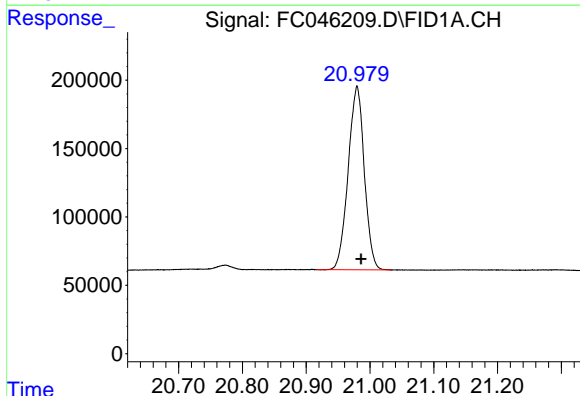
R.T.: 19.479 min  
Delta R.T.: -0.006 min  
Response: 2813318  
Conc: 38.76 ug/ml

Instrument :  
FID\_C  
ClientSampleId :  
INDIAN-ISLAND-(1)MS



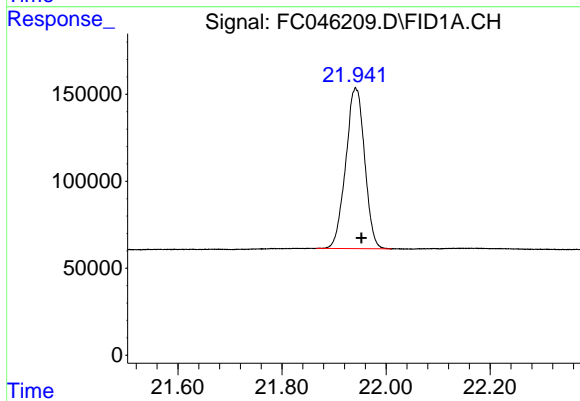
#20 n-Hexatriacontane (C36)

R.T.: 20.216 min  
Delta R.T.: -0.005 min  
Response: 2605682  
Conc: 38.53 ug/ml



#21 n-Octatriacontane (C38)

R.T.: 20.980 min  
Delta R.T.: -0.006 min  
Response: 2360611  
Conc: 39.06 ug/ml



#22 n-Tetracontane (C40)

R.T.: 21.941 min  
Delta R.T.: -0.012 min  
Response: 2327728  
Conc: 37.02 ug/ml