

Data Path : Z:\pestpcbsrv\HPCHEM1\FID_C\Data\FC030923AL\
 Data File : FC063140.D
 Signal(s) : FID1A.ch
 Acq On : 10 Mar 2023 04:49
 Operator : YP/AJ
 Sample : 01830-04
 Misc :
 ALS Vial : 21 Sample Multiplier: 1

Instrument :
 FID_C
 ClientSampleId :
 B-4

Integration File: autoint1.e
 Quant Time: Mar 10 05:26:53 2023
 Quant Method : Z:\pestpcbsrv\HPCHEM1\FID_C\Method\Aliphatic EPH 022223.M
 Quant Title : GC Extractables
 QLast Update : Wed Feb 22 04:36:00 2023
 Response via : Initial Calibration
 Integrator: ChemStation

Volume Inj. : 1 ul
 Signal Phase : Rxi-1ms
 Signal Info : 20M x 0.18mm x 0.18um

Compound	R.T.	Response	Conc Units

System Monitoring Compounds			
12) S 1-chlorooctadecane (S...	12.974	4426572	45.378 ug/ml
Spiked Amount	50.000	Recovery	= 90.76%

Target Compounds

(f)=RT Delta > 1/2 Window

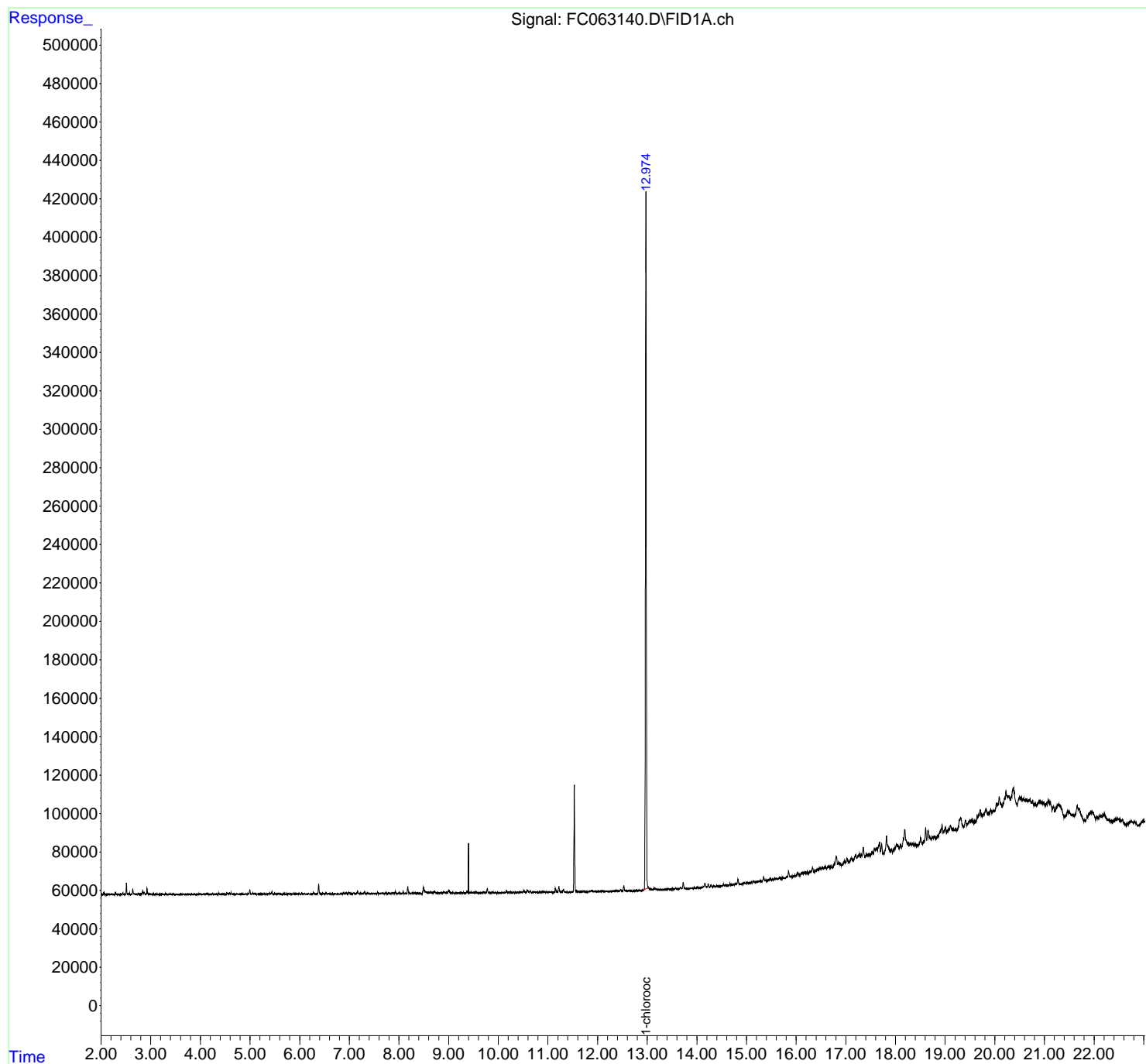
(m)=manual int.

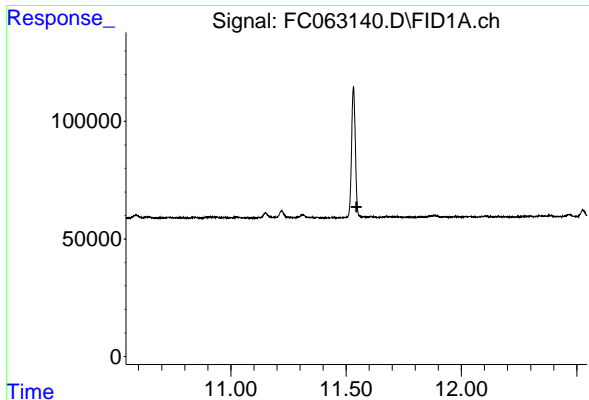
Data Path : Z:\pestpcbsrv\HPCHEM1\FID_C\Data\FC030923AL\
 Data File : FC063140.D
 Signal(s) : FID1A.ch
 Acq On : 10 Mar 2023 04:49
 Operator : YP/AJ
 Sample : 01830-04
 Misc :
 ALS Vial : 21 Sample Multiplier: 1

Instrument :
 FID_C
 ClientSampleId :
 B-4

Integration File: autoint1.e
 Quant Time: Mar 10 05:26:53 2023
 Quant Method : Z:\pestpcbsrv\HPCHEM1\FID_C\Method\Aliphatic EPH 022223.M
 Quant Title : GC Extractables
 QLast Update : Wed Feb 22 04:36:00 2023
 Response via : Initial Calibration
 Integrator: ChemStation

Volume Inj. : 1 ul
 Signal Phase : Rxi-1ms
 Signal Info : 20M x 0.18mm x 0.18um

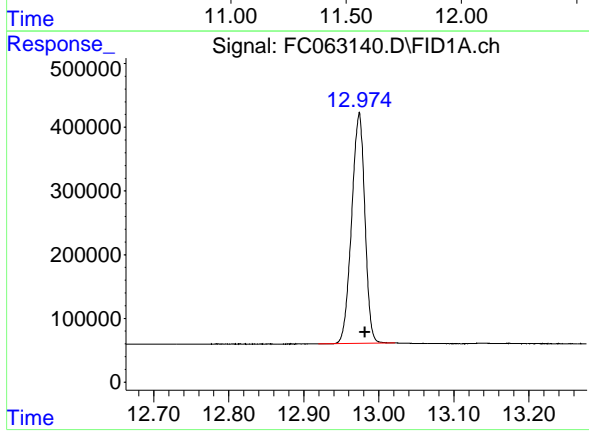




#9 ortho-Terphenyl (SURR)

R.T.: 0.000 min
Exp R.T.: 11.545 min
Response: 0
Conc: N.D.

Instrument :
FID_C
ClientSampleId :
B-4



#12 1-chlorooctadecane (SURR)

R.T.: 12.974 min
Delta R.T.: -0.008 min
Response: 4426572
Conc: 45.38 ug/ml