

Data Path : Z:\pestpcbsrv\HPCHEM1\FID_C\Data\FC030923AL\
 Data File : FC063142.D
 Signal(s) : FID1A.ch
 Acq On : 10 Mar 2023 08:11
 Operator : YP/AJ
 Sample : 01830-06
 Misc :
 ALS Vial : 23 Sample Multiplier: 1

Instrument :
 FID_C
 ClientSampleId :
 B-6

Integration File: autoint1.e
 Quant Time: Mar 10 09:49:43 2023
 Quant Method : Z:\pestpcbsrv\HPCHEM1\FID_C\Method\Aliphatic EPH 022223.M
 Quant Title : GC Extractables
 QLast Update : Wed Feb 22 04:36:00 2023
 Response via : Initial Calibration
 Integrator: ChemStation

Volume Inj. : 1 ul
 Signal Phase : Rxi-1ms
 Signal Info : 20M x 0.18mm x 0.18um

Compound	R.T.	Response	Conc Units
System Monitoring Compounds			
12) S 1-chlorooctadecane (S...	12.976	3827367	39.236 ug/ml
Spiked Amount	50.000	Recovery	= 78.47%

Target Compounds

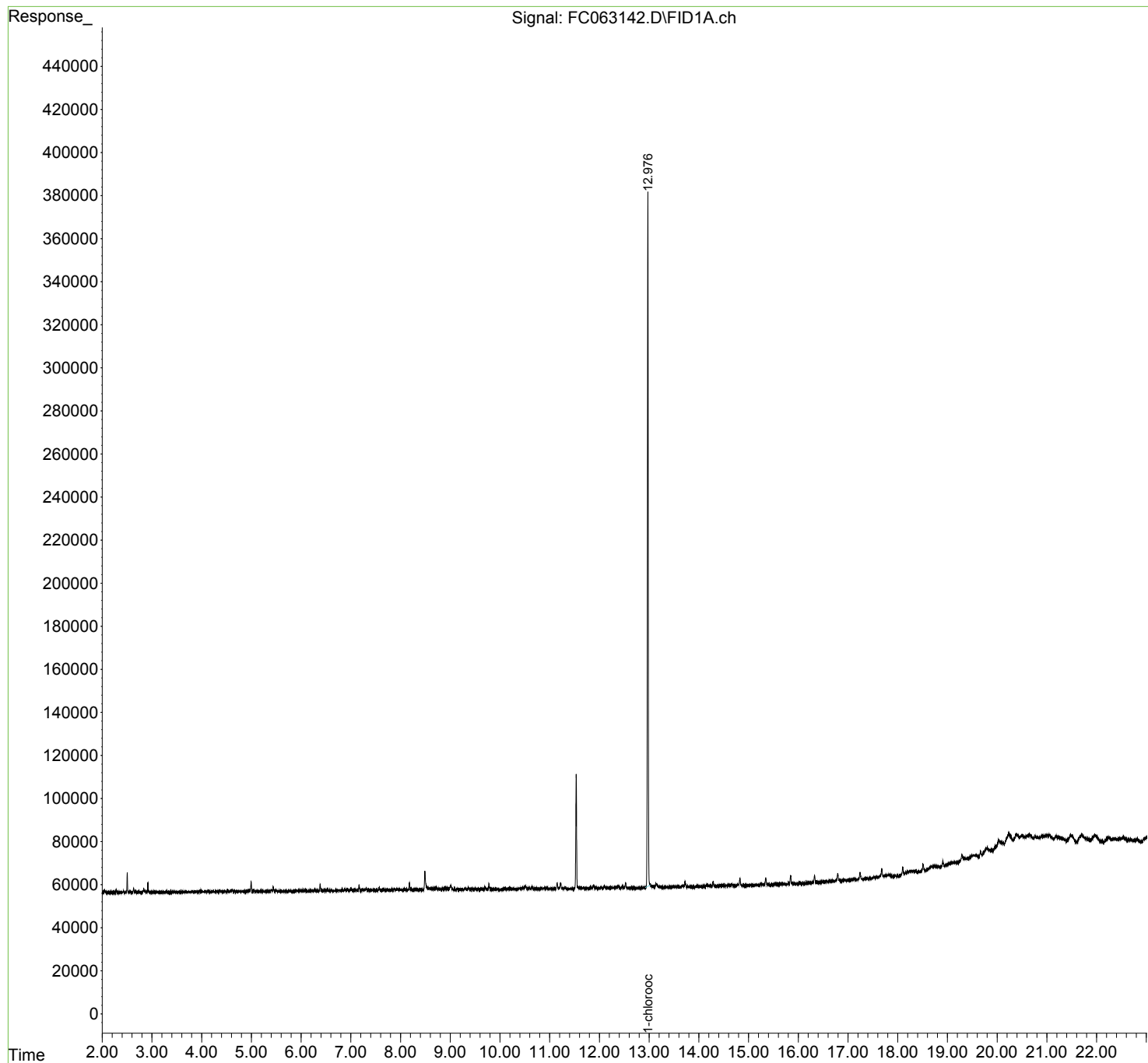
(f)=RT Delta > 1/2 Window (m)=manual int.

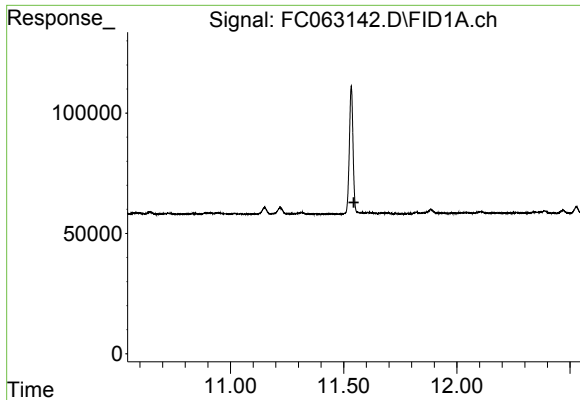
Data Path : Z:\pestpcbsrv\HPCHEM1\FID_C\Data\FC030923AL\
Data File : FC063142.D
Signal(s) : FID1A.ch
Acq On : 10 Mar 2023 08:11
Operator : YP/AJ
Sample : 01830-06
Misc :
ALS Vial : 23 Sample Multiplier: 1

Instrument :
FID_C
ClientSampleId :
B-6

Integration File: autoint1.e
Quant Time: Mar 10 09:49:43 2023
Quant Method : Z:\pestpcbsrv\HPCHEM1\FID_C\Method\Aliphatic EPH 022223.M
Quant Title : GC Extractables
QLast Update : Wed Feb 22 04:36:00 2023
Response via : Initial Calibration
Integrator: ChemStation

Volume Inj. : 1 ul
Signal Phase : Rxi-1ms
Signal Info : 20M x 0.18mm x 0.18um

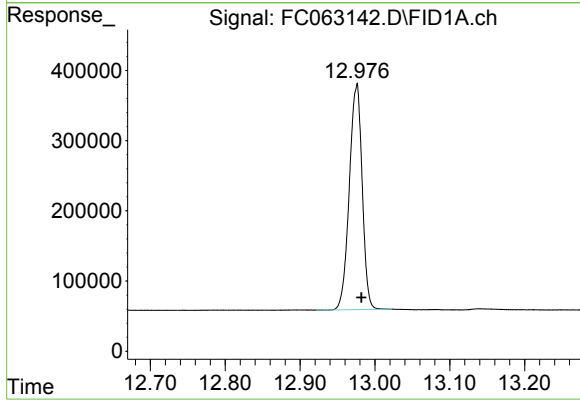




#9 ortho-Terphenyl (SURR)

R.T.: 0.000 min
 Exp R.T.: 11.545 min
 Response: 0
 Conc: N.D.

Instrument :
 FID_C
 ClientSampleId :
 B-6



#12 1-chlorooctadecane (SURR)

R.T.: 12.976 min
 Delta R.T.: -0.006 min
 Response: 3827367
 Conc: 39.24 ug/ml