

Data Path : Z:\pestpcbsrv\HPCHEM1\FID_C\Data\FC031022AL\
 Data File : FC058683.D
 Signal(s) : FID1A.CH
 Acq On : 10 Mar 2022 23:42
 Operator : UA/NP
 Sample : I.BLK
 Misc :
 ALS Vial : 1 Sample Multiplier: 1

Instrument :
 FID_C
 ClientSampleId :

Integration File: autoint1.e
 Quant Time: Mar 11 01:25:48 2022
 Quant Method : Z:\pestpcbsrv\HPCHEM1\FID_C\Method\Aliphatic EPH 022322.M
 Quant Title : GC Extractables
 QLast Update : Wed Feb 23 17:15:11 2022
 Response via : Initial Calibration
 Integrator: ChemStation 6890 Scale Mode: Large solvent peaks clipped

Volume Inj. : 1 ul
 Signal Phase : Rxi-1ms
 Signal Info : 20M x 0.18mm x 0.18um

Compound	R.T.	Response	Conc Units

System Monitoring Compounds			
Target Compounds			
17) T n-Tricontane (C30)	17.533	56886	0.505 ug/ml
18) T n-Dotriacontane (C32)	18.348	172634	1.605 ug/ml
19) T n-Tetratriacontane (C34)	19.103	107882	1.113 ug/ml

(f)=RT Delta > 1/2 Window

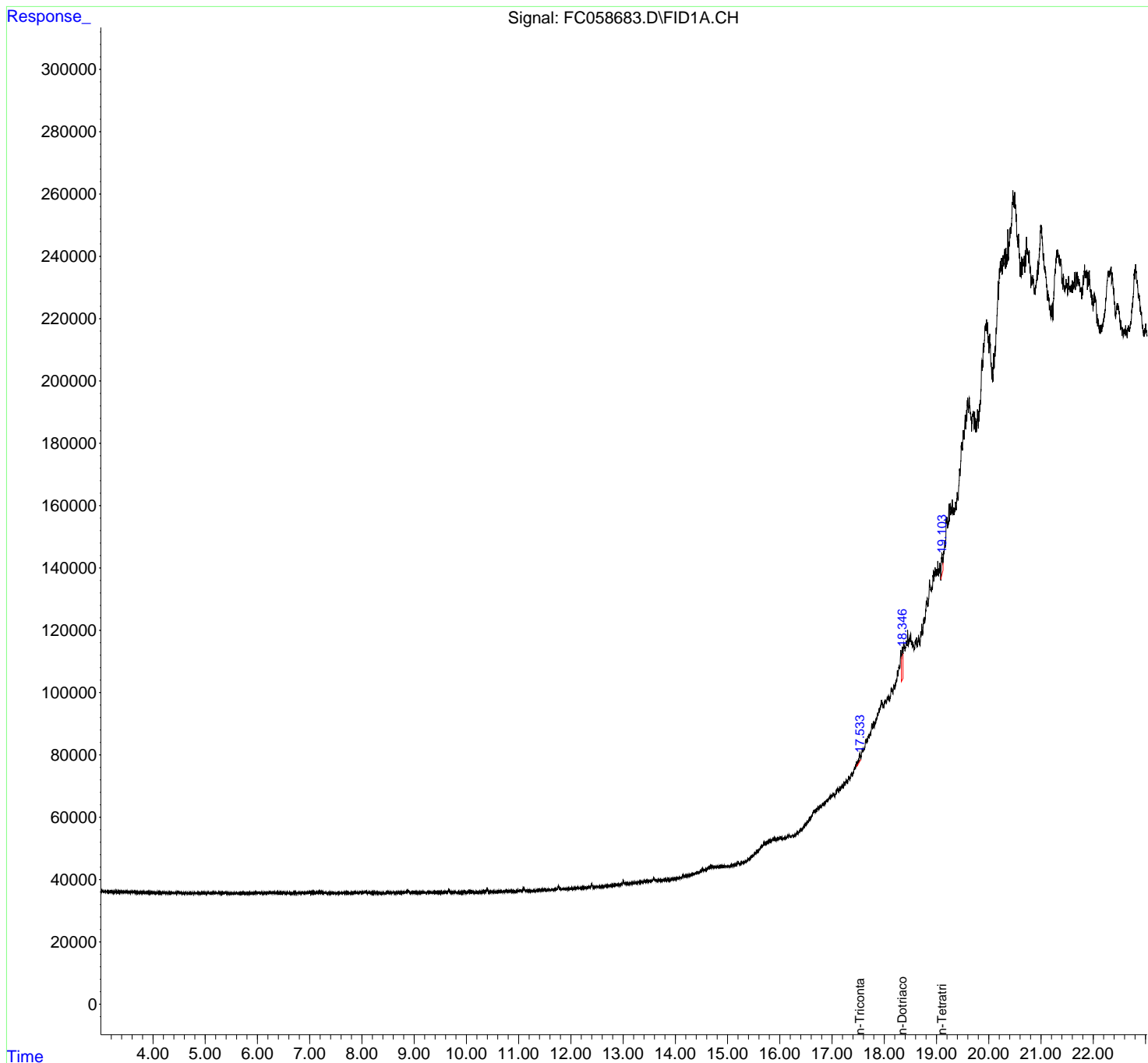
(m)=manual int.

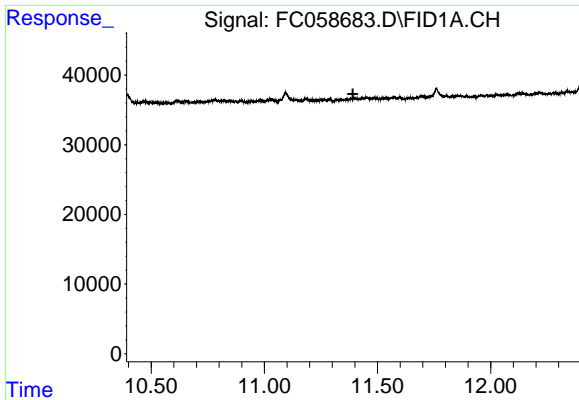
Data Path : Z:\pestpcbsrv\HPCHEM1\FID_C\Data\FC031022AL\
Data File : FC058683.D
Signal(s) : FID1A.CH
Acq On : 10 Mar 2022 23:42
Operator : UA/NP
Sample : I.BLK
Misc :
ALS Vial : 1 Sample Multiplier: 1

Instrument :
FID_C
ClientSampleId :

Integration File: autoint1.e
Quant Time: Mar 11 01:25:48 2022
Quant Method : Z:\pestpcbsrv\HPCHEM1\FID_C\Method\Aliphatic EPH 022322.M
Quant Title : GC Extractables
QLast Update : Wed Feb 23 17:15:11 2022
Response via : Initial Calibration
Integrator: ChemStation 6890 Scale Mode: Large solvent peaks clipped

Volume Inj. : 1 ul
Signal Phase : Rxi-1ms
Signal Info : 20M x 0.18mm x 0.18um

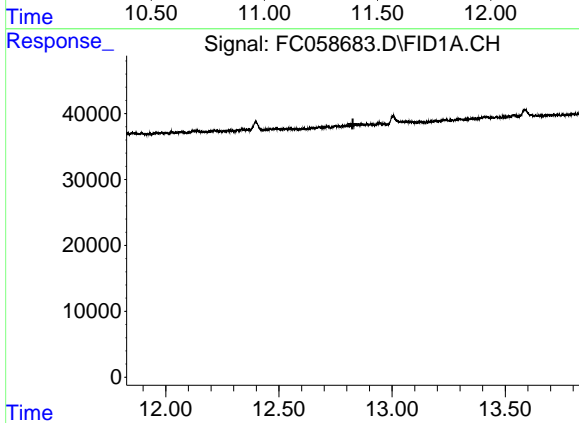




#9 ortho-Terphenyl (SURR)

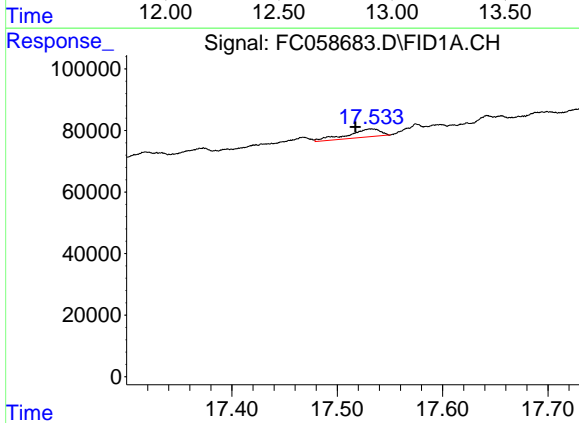
R.T.: 0.000 min
 Exp R.T. : 11.391 min
 Response: 0
 Conc: N.D.

Instrument :
 FID_C
 ClientSampleId :



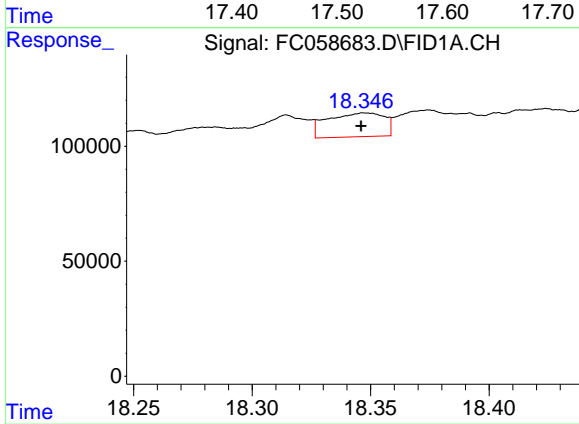
#12 1-chlorooctadecane (SURR)

R.T.: 0.000 min
 Exp R.T. : 12.827 min
 Response: 0
 Conc: N.D.



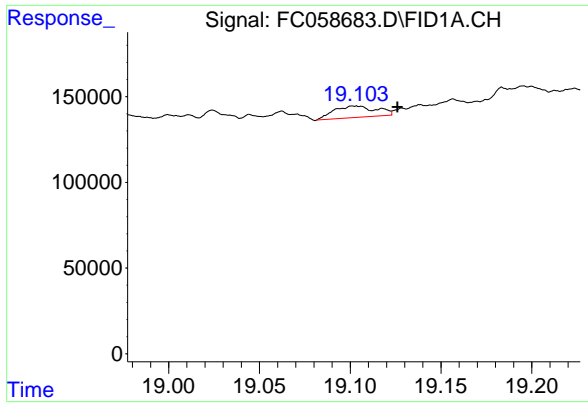
#17 n-Tricontane (C30)

R.T.: 17.533 min
 Delta R.T.: 0.015 min
 Response: 56886
 Conc: 0.51 ug/ml



#18 n-Dotriacontane (C32)

R.T.: 18.348 min
 Delta R.T.: 0.002 min
 Response: 172634
 Conc: 1.61 ug/ml



#19 n-Tetratriacontane (C34)

R.T.: 19.103 min
Delta R.T.: -0.023 min
Response: 107882
Conc: 1.11 ug/ml

Instrument :
FID_C
ClientSampleId :