

Data Path : Z:\pestpcbsrv\HPCHEM1\FID_C\Data\FC031022AL\
 Data File : FC058673.D
 Signal(s) : FID1A.CH
 Acq On : 10 Mar 2022 17:05
 Operator : UA/NP
 Sample : N1845-10
 Misc :
 ALS Vial : 10 Sample Multiplier: 1

Instrument :
 FID_C
ClientSampleId :
 SAMPLE-10

Manual Integrations
APPROVED
 Reviewed By :Yogesh Patel 03/11/2022
 Supervised By :Ankita Jodhani 03/11/2022

Integration File: sample.E
 Quant Time: Mar 11 01:23:38 2022
 Quant Method : Z:\pestpcbsrv\HPCHEM1\FID_C\Method\Aliphatic EPH 022322.M
 Quant Title : GC Extractables
 QLast Update : Wed Feb 23 17:15:11 2022
 Response via : Initial Calibration
 Integrator: ChemStation 6890 Scale Mode: Large solvent peaks clipped

Volume Inj. : 1 ul
 Signal Phase : Rxi-1ms
 Signal Info : 20M x 0.18mm x 0.18um

Compound	R.T.	Response	Conc Units

System Monitoring Compounds			
9) S ortho-Terphenyl (SURR)	11.399	4277576	29.368 ug/mlm
Spiked Amount	50.000	Recovery	= 58.74%
12) S 1-chlorooctadecane (S...	12.831	3360738	29.649 ug/ml
Spiked Amount	50.000	Recovery	= 59.30%

Target Compounds

(f)=RT Delta > 1/2 Window

(m)=manual int.

Data Path : Z:\pestpcbsrv\HPCHEM1\FID_C\Data\FC031022AL\
 Data File : FC058673.D
 Signal(s) : FID1A.CH
 Acq On : 10 Mar 2022 17:05
 Operator : UA/NP
 Sample : N1845-10
 Misc :
 ALS Vial : 10 Sample Multiplier: 1

Instrument :

FID_C

ClientSampleId :

SAMPLE-10

Manual Integrations

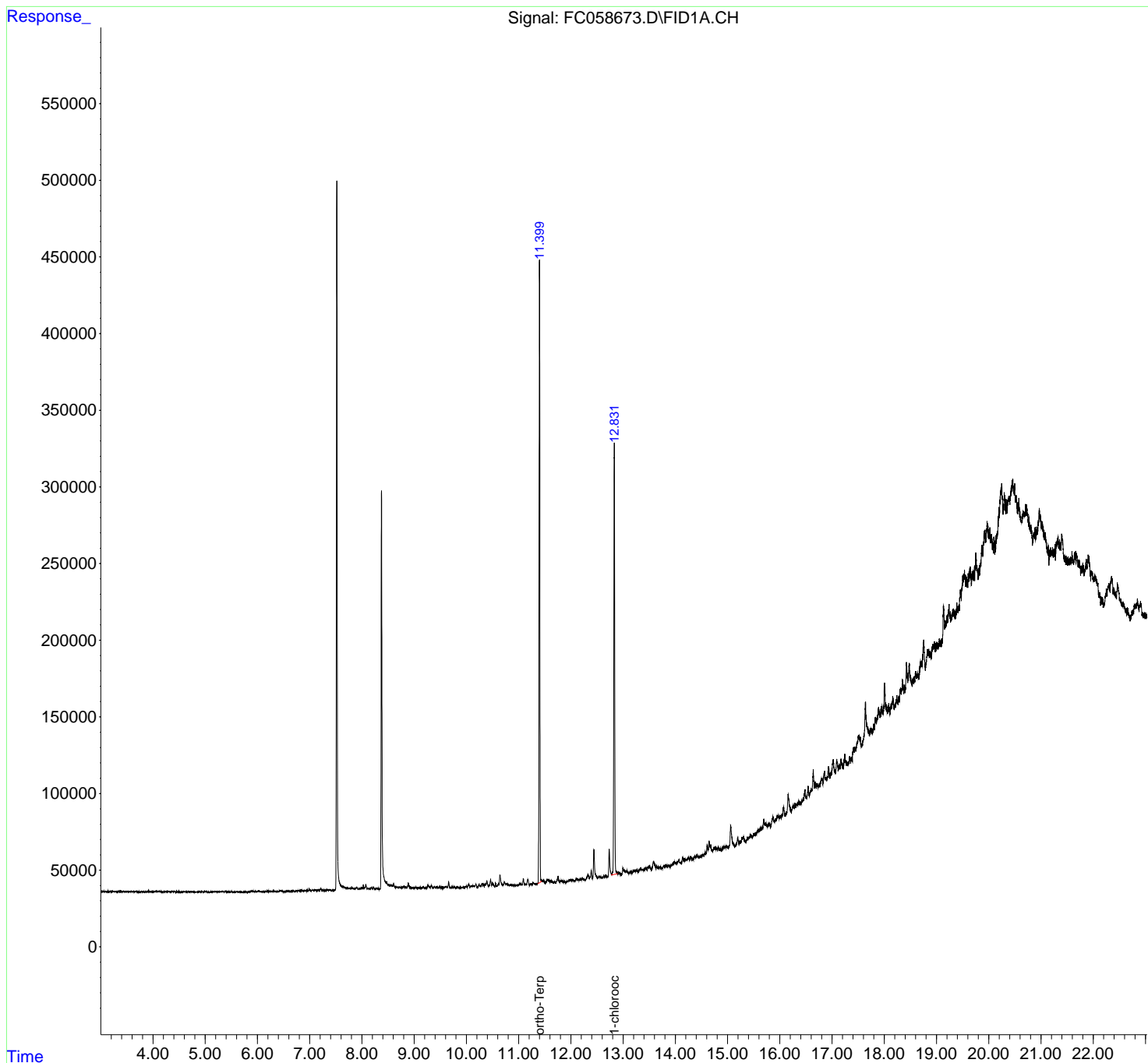
APPROVED

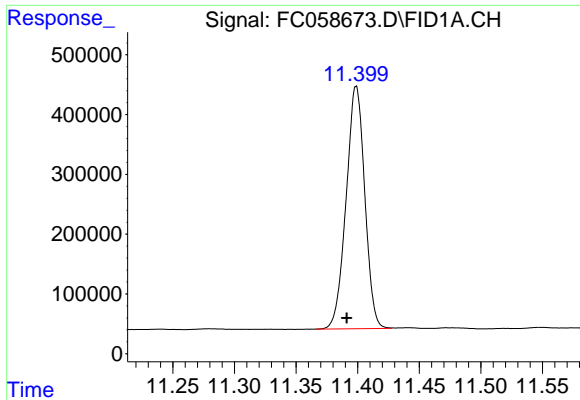
Reviewed By :Yogesh Patel 03/11/2022

Supervised By :Ankita Jodhani 03/11/2022

Integration File: sample.E
 Quant Time: Mar 11 01:23:38 2022
 Quant Method : Z:\pestpcbsrv\HPCHEM1\FID_C\Method\Aliphatic EPH 022322.M
 Quant Title : GC Extractables
 QLast Update : Wed Feb 23 17:15:11 2022
 Response via : Initial Calibration
 Integrator: ChemStation 6890 Scale Mode: Large solvent peaks clipped

Volume Inj. : 1 ul
 Signal Phase : Rxi-1ms
 Signal Info : 20M x 0.18mm x 0.18um





#9 ortho-Terphenyl (SURR)

R.T.: 11.399 min
Delta R.T.: 0.008 min
Response: 4277576
Conc: 29.37 ug/ml

Instrument :

FID_C

ClientSampleId :

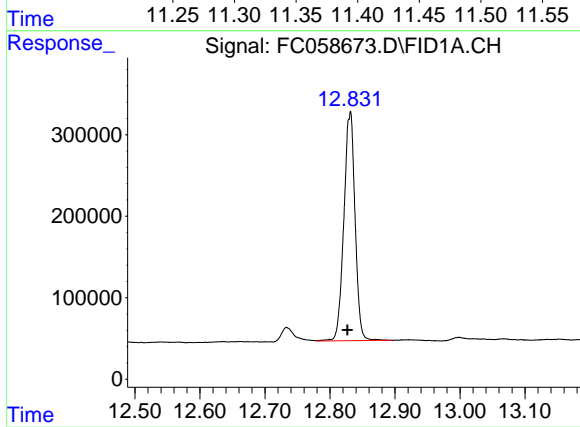
SAMPLE-10

Manual Integrations

APPROVED

Reviewed By :Yogesh Patel 03/11/2022

Supervised By :Ankita Jodhani 03/11/2022



#12 1-chlorooctadecane (SURR)

R.T.: 12.831 min
Delta R.T.: 0.004 min
Response: 3360738
Conc: 29.65 ug/ml