

Data Path : Z:\pestpcbsrv\HPCHEM1\FID_C\Data\FC031119AL\
 Data File : FC039725.D
 Signal(s) : FID1A.CH
 Acq On : 11 Mar 2019 18:14
 Operator : AJ\SJ
 Sample : K1807-09
 Misc :
 ALS Vial : 14 Sample Multiplier: 1

Integration File: autoint1.e
 Quant Time: Mar 12 03:25:44 2019
 Quant Method : Z:\pestpcbsrv\HPCHEM1\FID_C\Method\Alaphatic EPH 022219.M
 Quant Title : GC Extractables
 QLast Update : Mon Feb 25 18:21:16 2019
 Response via : Initial Calibration
 Integrator: ChemStation 6890 Scale Mode: Large solvent peaks clipped

Volume Inj. : 1 ul
 Signal Phase : Rxi-1ms
 Signal Info : 20M x 0.18mm x 0.18um

Compound	R.T.	Response	Conc Units

System Monitoring Compounds			
9) S ortho-Terphenyl (SURR)	11.149	2700616	16.056 ug/ml
Spiked Amount	50.000	Recovery	= 32.11%
12) S 1-chlorooctadecane (S...	12.597	2083900	16.520 ug/ml
Spiked Amount	50.000	Recovery	= 33.04%

Target Compounds

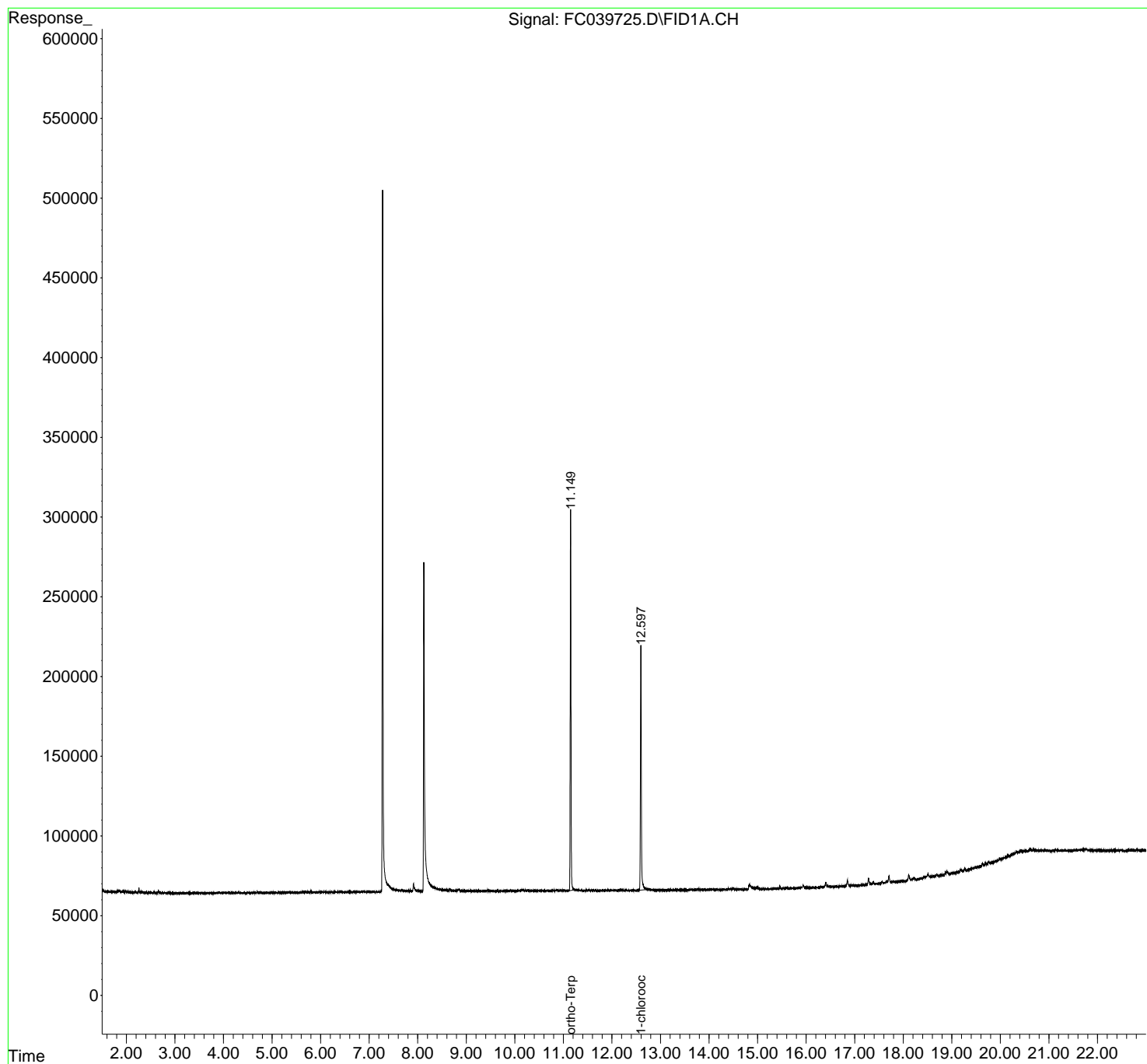
(f)=RT Delta > 1/2 Window

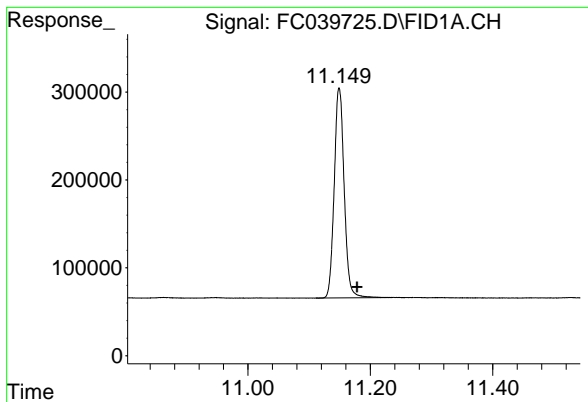
(m)=manual int.

Data Path : Z:\pestpcbsrv\HPCHEM1\FID_C\Data\FC031119AL\
 Data File : FC039725.D
 Signal(s) : FID1A.CH
 Acq On : 11 Mar 2019 18:14
 Operator : AJ\SJ
 Sample : K1807-09
 Misc :
 ALS Vial : 14 Sample Multiplier: 1

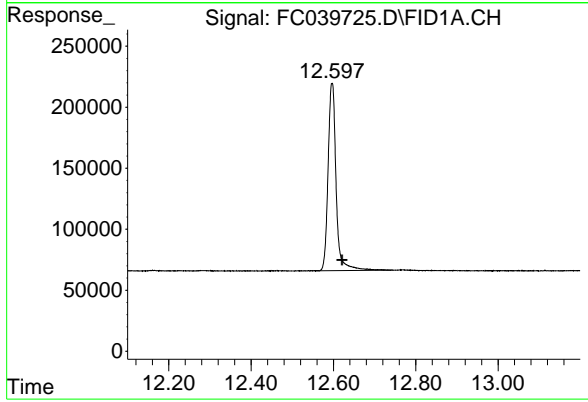
Integration File: autoint1.e
 Quant Time: Mar 12 03:25:44 2019
 Quant Method : Z:\pestpcbsrv\HPCHEM1\FID_C\Method\Alaphatic EPH 022219.M
 Quant Title : GC Extractables
 QLast Update : Mon Feb 25 18:21:16 2019
 Response via : Initial Calibration
 Integrator: ChemStation 6890 Scale Mode: Large solvent peaks clipped

Volume Inj. : 1 ul
 Signal Phase : Rxi-1ms
 Signal Info : 20M x 0.18mm x 0.18um





#9 ortho-Terphenyl (SURR)
R.T.: 11.149 min
Delta R.T.: -0.029 min
Response: 2700616
Conc: 16.06 ug/ml



#12 1-chlorooctadecane (SURR)
R.T.: 12.597 min
Delta R.T.: -0.025 min
Response: 2083900
Conc: 16.52 ug/ml