

Data Path : Z:\pestpcbsrv\HPCHEM1\FID_C\Data\FC031122AL\
 Data File : FC058705.D
 Signal(s) : FID1A.CH
 Acq On : 11 Mar 2022 22:09
 Operator : UA/NP
 Sample : 20 PPM ALIPHATIC HC STD
 Misc :
 ALS Vial : 2 Sample Multiplier: 1

Instrument :
 FID_C
 ClientSampleId :
 20 PPM ALIPHATIC HC STD

Manual Integrations
 APPROVED

Reviewed By :Yogesh Patel 03/14/2022
 Supervised By :Ankita Jodhani 03/14/2022

Integration File: autoint1.e
 Quant Time: Mar 12 01:50:37 2022
 Quant Method : Z:\pestpcbsrv\HPCHEM1\FID_C\Method\Aliphatic EPH 022322.M
 Quant Title : GC Extractables
 QLast Update : Wed Feb 23 17:15:11 2022
 Response via : Initial Calibration
 Integrator: ChemStation 6890 Scale Mode: Large solvent peaks clipped

Volume Inj. : 1 ul
 Signal Phase : Rxi-1ms
 Signal Info : 20M x 0.18mm x 0.18um

Compound	R.T.	Response	Conc Units

System Monitoring Compounds			
9) S ortho-Terphenyl (SURR)	11.398	2702891	18.557 ug/ml
Spiked Amount	50.000	Recovery	= 37.11%
12) S 1-chlorooctadecane (S...	12.831	2072953	18.288 ug/ml
Spiked Amount	50.000	Recovery	= 36.58%
Target Compounds			
1) T n-Nonane (C9)	3.253	2428373	20.194 ug/ml
2) T n-Decane (C10)	4.302	2415734	20.300 ug/ml
3) T A~Naphthalene (C11.7)	5.864	2555094	19.687 ug/ml
4) T n-Dodecane (C12)	6.295	2502972	20.346 ug/ml
5) T A~2-methylnaphthalene...	6.908	2566545	19.687 ug/ml
6) T n-Tetradecane (C14)	8.073	2516972	20.086 ug/ml
7) T n-Hexadecane (C16)	9.661	2533440	19.673 ug/ml
8) T n-Octadecane (C18)	11.091	2518206	19.136 ug/ml
10) T n-Eicosane (C20)	12.391	2462322	18.725 ug/ml
11) T n-Heneicosane (C21)	13.000	2444164	18.494 ug/ml
13) T n-Docosane (C22)	13.582	2420466	18.566 ug/ml
14) T n-Tetracosane (C24)	14.678	2351630	18.211 ug/ml
15) T n-Hexacosane (C26)	15.693	2268384	18.338 ug/mlm
16) T n-Octacosane (C28)	16.638	2233711	18.765 ug/ml
17) T n-Tricontane (C30)	17.520	2221478	19.735 ug/ml
18) T n-Dotriacontane (C32)	18.348	2163222	20.117 ug/mlm
19) T n-Tetratriacontane (C34)	19.129	2007869	20.723 ug/ml
20) T n-Hexatriacontane (C36)	19.865	2050343	22.727 ug/ml
21) T n-Octatriacontane (C38)	20.571	1950033	22.408 ug/mlm
22) T n-Tetracontane (C40)	21.398	1875926	22.354 ug/ml

(f)=RT Delta > 1/2 Window

(m)=manual int.

Data Path : Z:\pestpcbsrv\HPCHEM1\FID_C\Data\FC031122AL\
 Data File : FC058705.D
 Signal(s) : FID1A.CH
 Acq On : 11 Mar 2022 22:09
 Operator : UA/NP
 Sample : 20 PPM ALIPHATIC HC STD
 Misc :
 ALS Vial : 2 Sample Multiplier: 1

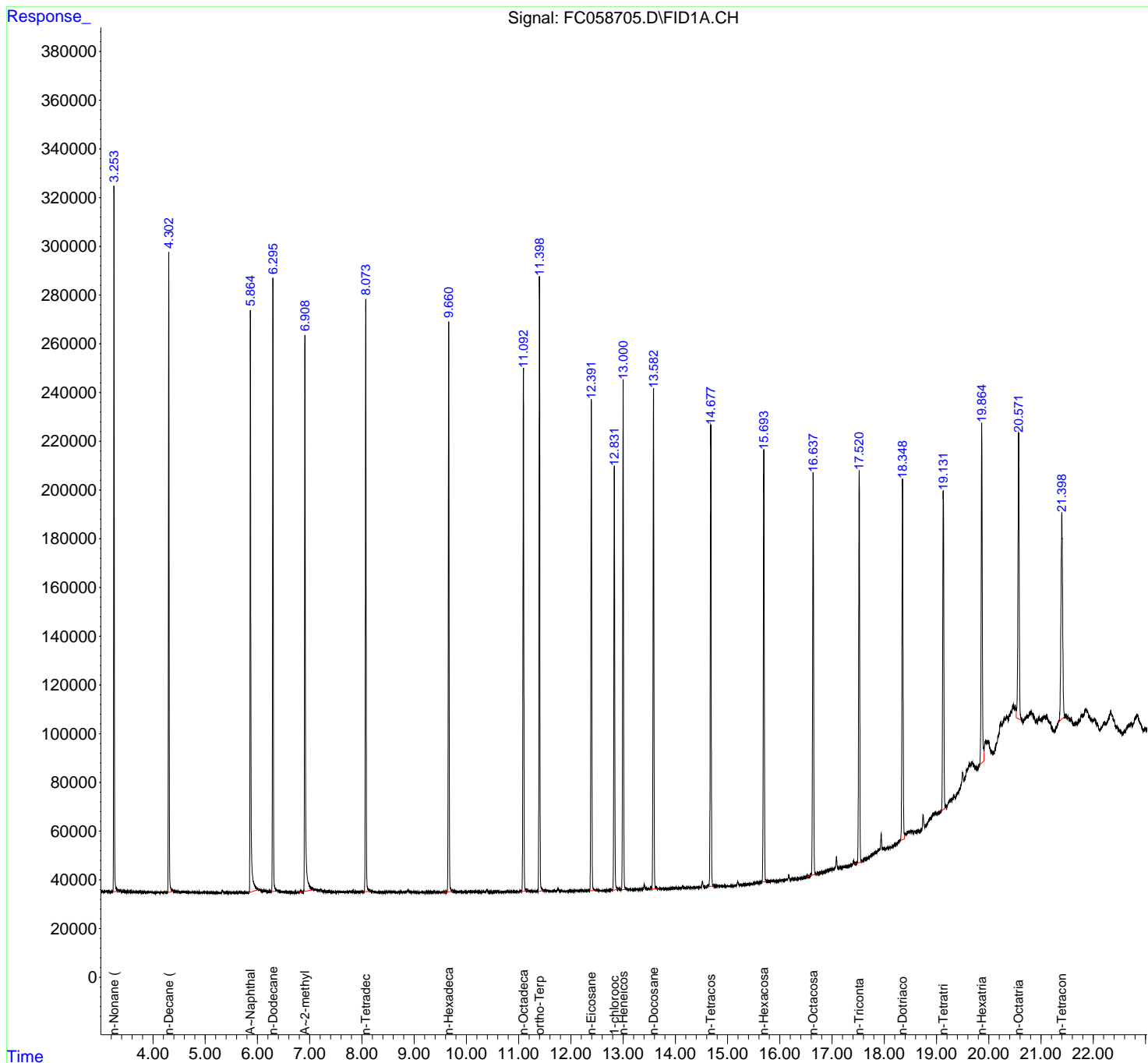
Instrument :
 FID_C
ClientSampleId :
 20 PPM ALIPHATIC HC STD

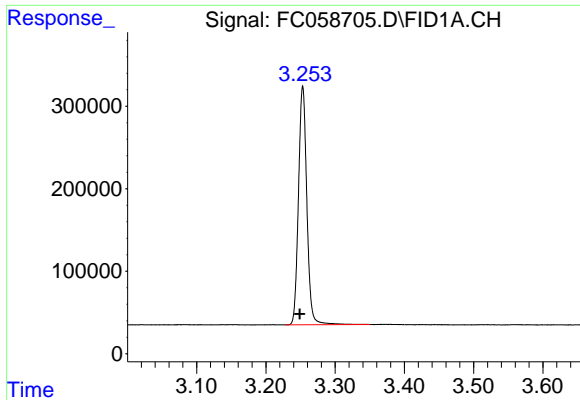
Manual Integrations
APPROVED

Reviewed By :Yogesh Patel 03/14/2022
 Supervised By :Ankita Jodhani 03/14/2022

Integration File: autoint1.e
 Quant Time: Mar 12 01:50:37 2022
 Quant Method : Z:\pestpcbsrv\HPCHEM1\FID_C\Method\Aliphatic EPH 022322.M
 Quant Title : GC Extractables
 QLast Update : Wed Feb 23 17:15:11 2022
 Response via : Initial Calibration
 Integrator: ChemStation 6890 Scale Mode: Large solvent peaks clipped

Volume Inj. : 1 ul
 Signal Phase : Rxi-1ms
 Signal Info : 20M x 0.18mm x 0.18um





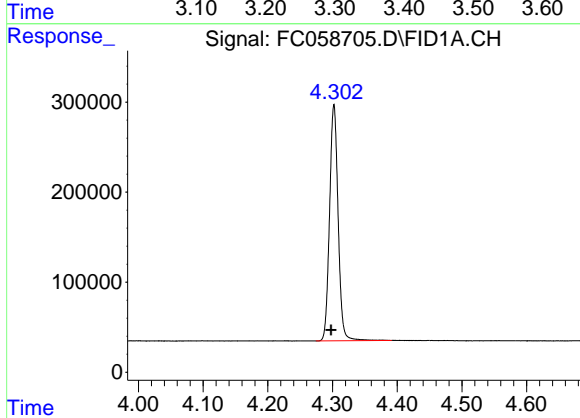
#1 n-Nonane (C9)

R.T.: 3.253 min
 Delta R.T.: 0.004 min
 Response: 2428373
 Conc: 20.19 ug/ml

Instrument :
 FID_C
 ClientSampleId :
 20 PPM ALIPHATIC HC STD

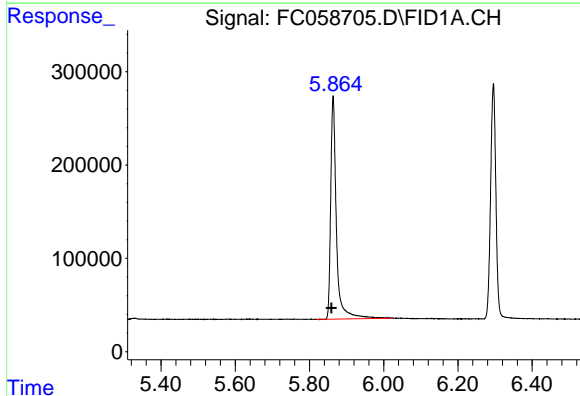
Manual Integrations
 APPROVED

Reviewed By :Yogesh Patel 03/14/2022
 Supervised By :Ankita Jodhani 03/14/2022



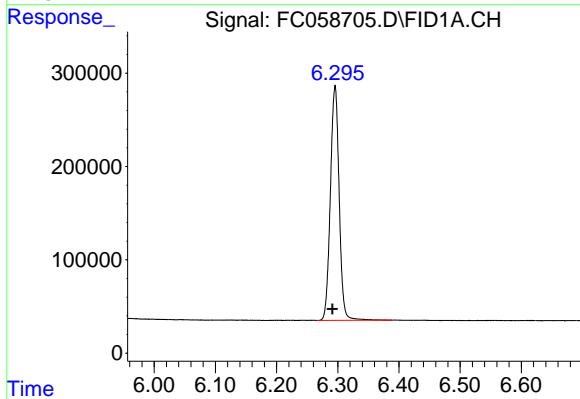
#2 n-Decane (C10)

R.T.: 4.302 min
 Delta R.T.: 0.005 min
 Response: 2415734
 Conc: 20.30 ug/ml



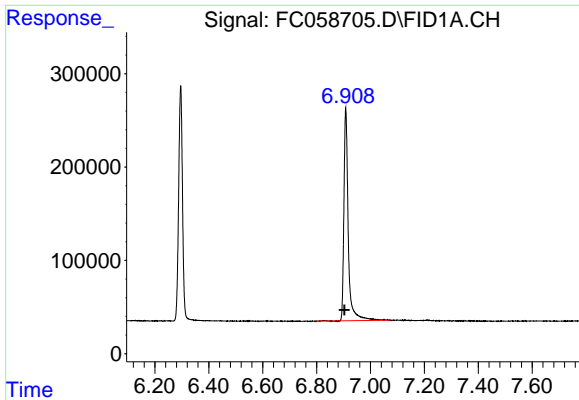
#3 A~Naphthalene (C11.7)

R.T.: 5.864 min
 Delta R.T.: 0.005 min
 Response: 2555094
 Conc: 19.69 ug/ml



#4 n-Dodecane (C12)

R.T.: 6.295 min
 Delta R.T.: 0.004 min
 Response: 2502972
 Conc: 20.35 ug/ml



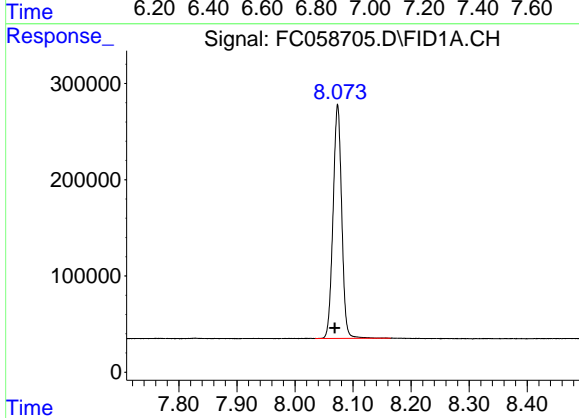
#5 A~2-methylnaphthalene (C12.89)

R.T.: 6.908 min
 Delta R.T.: 0.006 min
 Response: 2566545
 Conc: 19.69 ug/ml

Instrument : FID_C
 Client Sample Id : 20 PPM ALIPHATIC HC STD

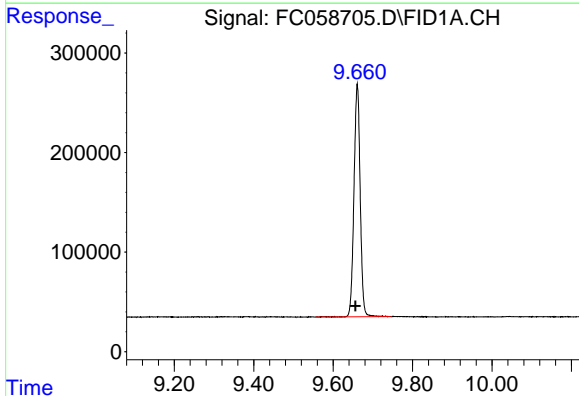
Manual Integrations
 APPROVED

Reviewed By :Yogesh Patel 03/14/2022
 Supervised By :Ankita Jodhani 03/14/2022



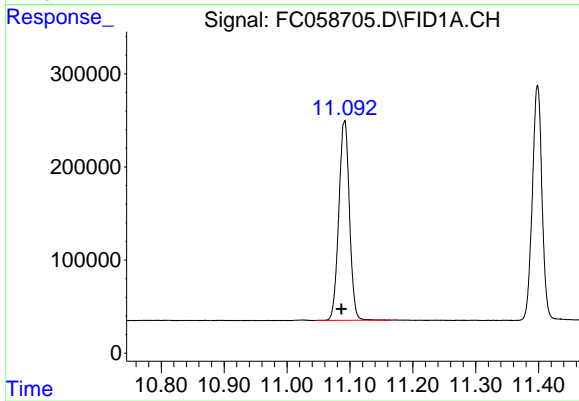
#6 n-Tetradecane (C14)

R.T.: 8.073 min
 Delta R.T.: 0.005 min
 Response: 2516972
 Conc: 20.09 ug/ml



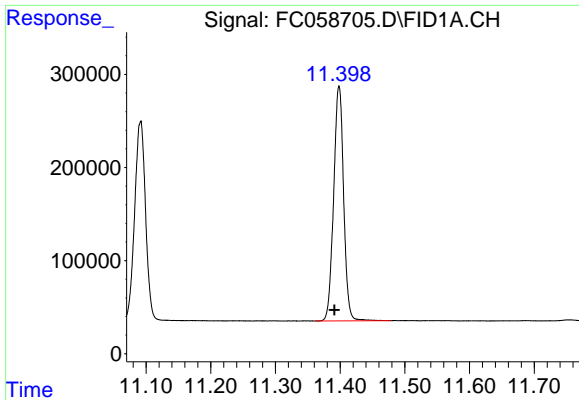
#7 n-Hexadecane (C16)

R.T.: 9.661 min
 Delta R.T.: 0.004 min
 Response: 2533440
 Conc: 19.67 ug/ml



#8 n-Octadecane (C18)

R.T.: 11.091 min
 Delta R.T.: 0.005 min
 Response: 2518206
 Conc: 19.14 ug/ml



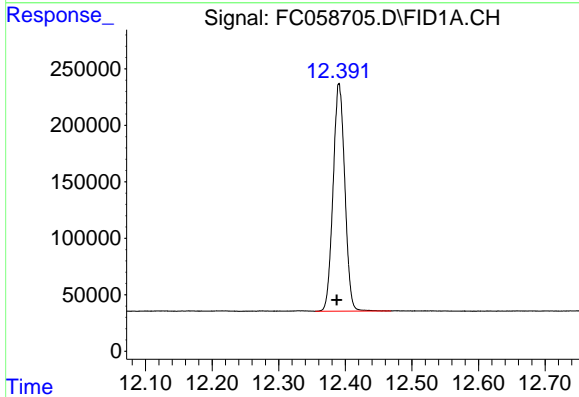
#9 ortho-Terphenyl (SURR)

R.T.: 11.398 min
 Delta R.T.: 0.007 min
 Response: 2702891
 Conc: 18.56 ug/ml

Instrument : FID_C
 Client Sample Id : 20 PPM ALIPHATIC HC STD

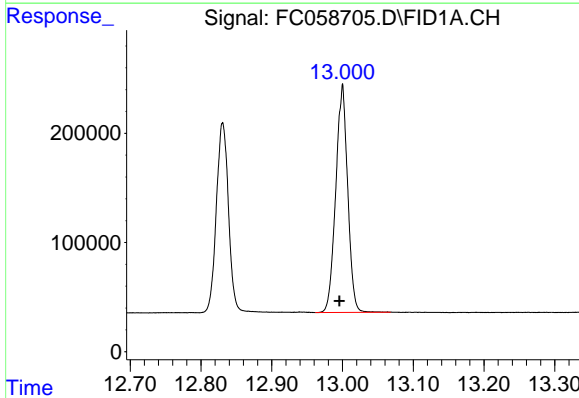
Manual Integrations
 APPROVED

Reviewed By :Yogesh Patel 03/14/2022
 Supervised By :Ankita Jodhani 03/14/2022



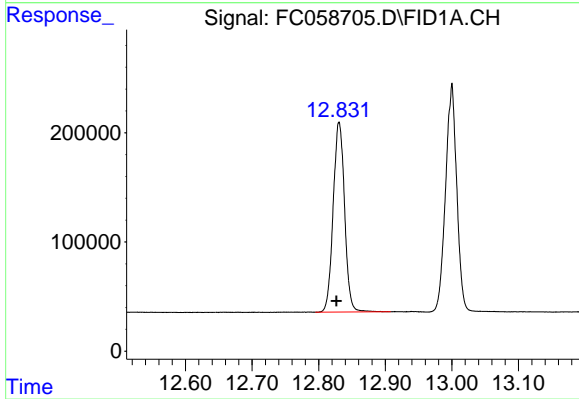
#10 n-Eicosane (C20)

R.T.: 12.391 min
 Delta R.T.: 0.003 min
 Response: 2462322
 Conc: 18.73 ug/ml



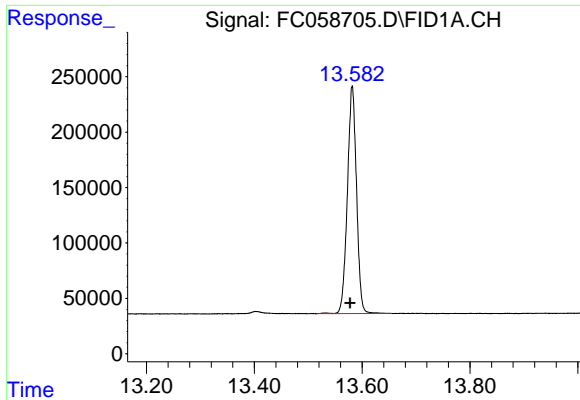
#11 n-Heneicosane (C21)

R.T.: 13.000 min
 Delta R.T.: 0.004 min
 Response: 2444164
 Conc: 18.49 ug/ml



#12 1-chlorooctadecane (SURR)

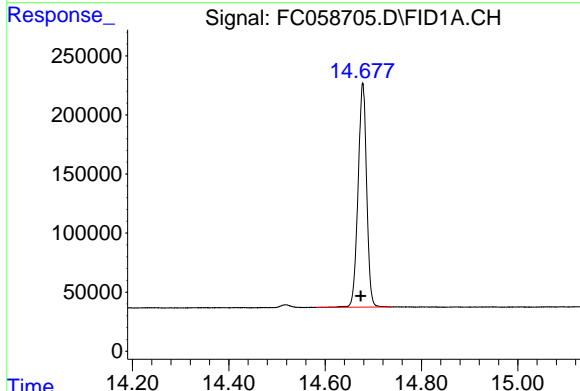
R.T.: 12.831 min
 Delta R.T.: 0.004 min
 Response: 2072953
 Conc: 18.29 ug/ml



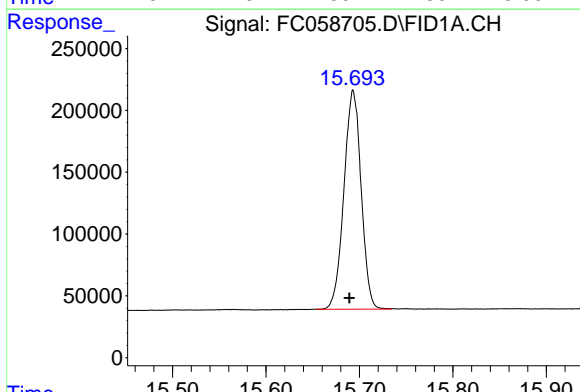
#13 n-Docosane (C22)
 R.T.: 13.582 min
 Delta R.T.: 0.004 min
 Response: 2420466
 Conc: 18.57 ug/ml

Instrument : FID_C
 Client Sample Id : 20 PPM ALIPHATIC HC STD

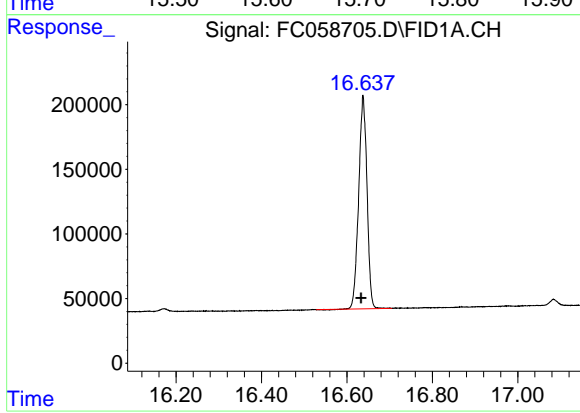
Manual Integrations
APPROVED
 Reviewed By :Yogesh Patel 03/14/2022
 Supervised By :Ankita Jodhani 03/14/2022



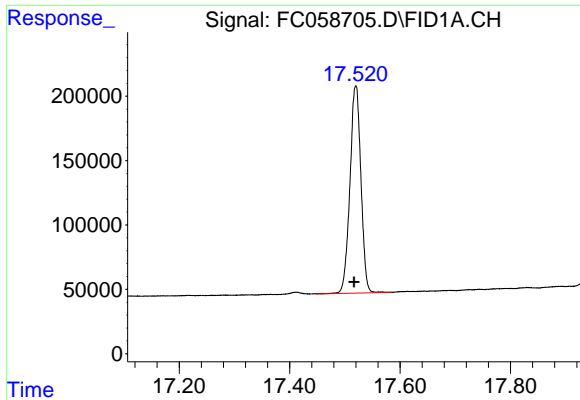
#14 n-Tetracosane (C24)
 R.T.: 14.678 min
 Delta R.T.: 0.004 min
 Response: 2351630
 Conc: 18.21 ug/ml



#15 n-Hexacosane (C26)
 R.T.: 15.693 min
 Delta R.T.: 0.003 min
 Response: 2268384
 Conc: 18.34 ug/ml m



#16 n-Octacosane (C28)
 R.T.: 16.638 min
 Delta R.T.: 0.005 min
 Response: 2233711
 Conc: 18.77 ug/ml



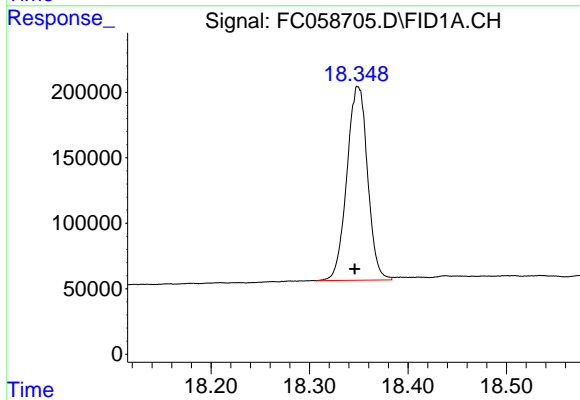
#17 n-Tricontane (C30)

R.T.: 17.520 min
 Delta R.T.: 0.003 min
 Response: 2221478
 Conc: 19.74 ug/ml

Instrument :
 FID_C
 ClientSampleId :
 20 PPM ALIPHATIC HC STD

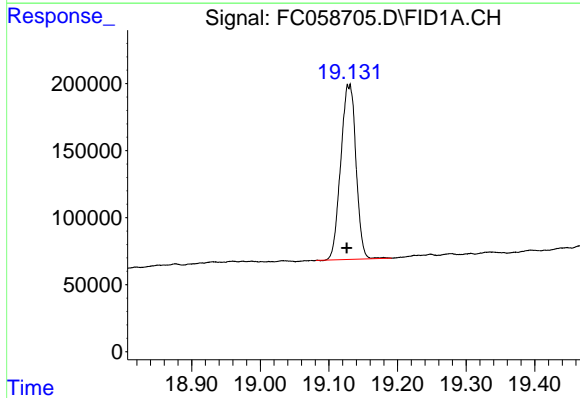
Manual Integrations
 APPROVED

Reviewed By :Yogesh Patel 03/14/2022
 Supervised By :Ankita Jodhani 03/14/2022



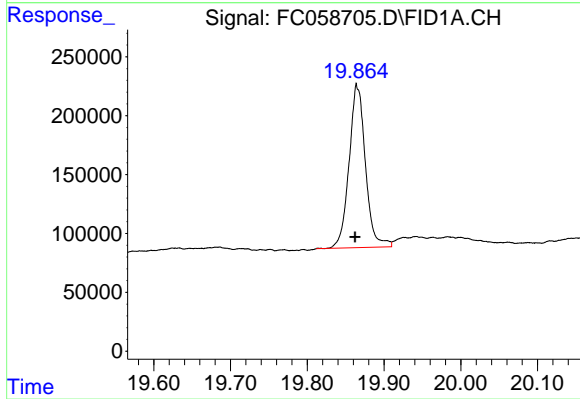
#18 n-Dotriacontane (C32)

R.T.: 18.348 min
 Delta R.T.: 0.002 min
 Response: 2163222
 Conc: 20.12 ug/ml m



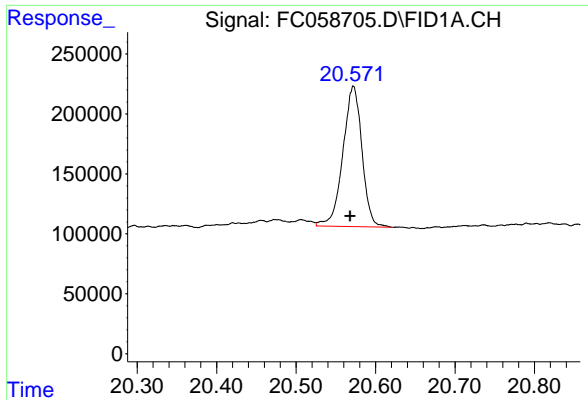
#19 n-Tetratriacontane (C34)

R.T.: 19.129 min
 Delta R.T.: 0.004 min
 Response: 2007869
 Conc: 20.72 ug/ml



#20 n-Hexatriacontane (C36)

R.T.: 19.865 min
 Delta R.T.: 0.003 min
 Response: 2050343
 Conc: 22.73 ug/ml



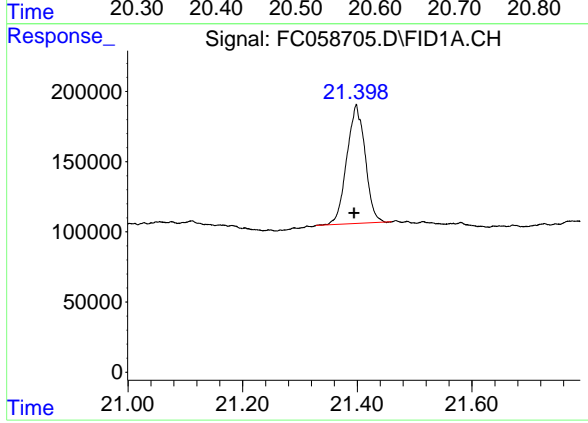
#21 n-Octatriacontane (C38)

R.T.: 20.571 min
Delta R.T.: 0.003 min
Response: 1950033
Conc: 22.41 ug/ml

Instrument :
FID_C
ClientSampleId :
20 PPM ALIPHATIC HC STD

Manual Integrations
APPROVED

Reviewed By :Yogesh Patel 03/14/2022
Supervised By :Ankita Jodhani 03/14/2022



#22 n-Tetracontane (C40)

R.T.: 21.398 min
Delta R.T.: 0.003 min
Response: 1875926
Conc: 22.35 ug/ml