

Data Path : Z:\pestpcbsrv\HPCHEM1\FID_C\Data\FC031122AL\
 Data File : FC058707.D
 Signal(s) : FID1A.CH
 Acq On : 11 Mar 2022 23:28
 Operator : UA/NP
 Sample : N1845-07DL 5X
 Misc :
 ALS Vial : 18 Sample Multiplier: 1

Instrument :
 FID_C
ClientSampleId :
 SAMPLE-7DL

Manual Integrations
APPROVED
 Reviewed By :Yogesh Patel 03/14/2022
 Supervised By :Ankita Jodhani 03/14/2022

Integration File: autoint1.e
 Quant Time: Mar 12 01:51:05 2022
 Quant Method : Z:\pestpcbsrv\HPCHEM1\FID_C\Method\Aliphatic EPH 022322.M
 Quant Title : GC Extractables
 QLast Update : Wed Feb 23 17:15:11 2022
 Response via : Initial Calibration
 Integrator: ChemStation 6890 Scale Mode: Large solvent peaks clipped

Volume Inj. : 1 ul
 Signal Phase : Rxi-1ms
 Signal Info : 20M x 0.18mm x 0.18um

Compound	R.T.	Response	Conc Units

System Monitoring Compounds			
9) S ortho-Terphenyl (SURR)	11.399	987346	6.779 ug/ml
Spiked Amount	50.000	Recovery =	13.56%
12) S 1-chlorooctadecane (S...	12.831	791530	6.983 ug/mlm
Spiked Amount	50.000	Recovery =	13.97%

Target Compounds

(f)=RT Delta > 1/2 Window (m)=manual int.

Data Path : Z:\pestpcbsrv\HPCHEM1\FID_C\Data\FC031122AL\
 Data File : FC058707.D
 Signal(s) : FID1A.CH
 Acq On : 11 Mar 2022 23:28
 Operator : UA/NP
 Sample : N1845-07DL 5X
 Misc :
 ALS Vial : 18 Sample Multiplier: 1

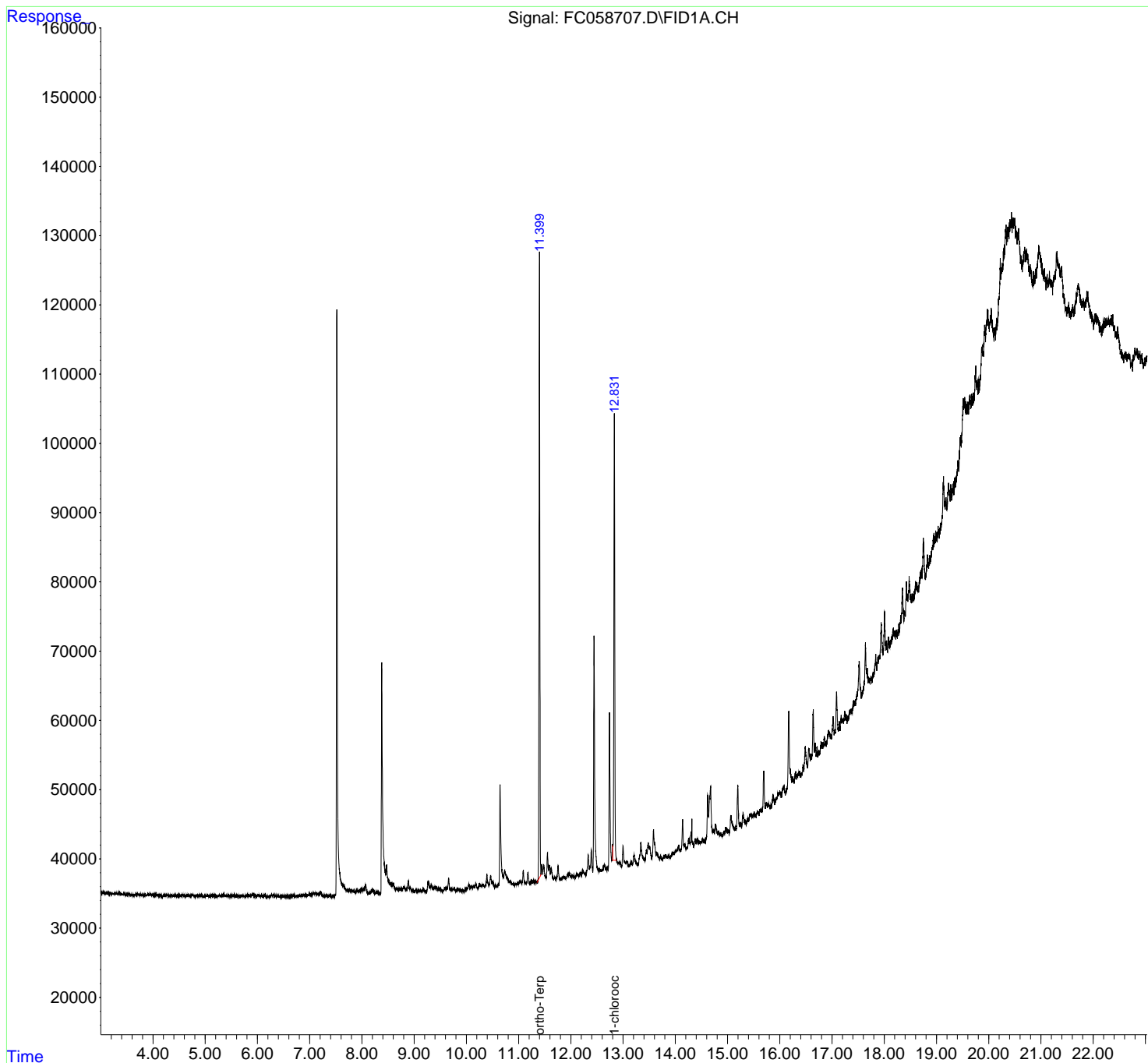
Instrument :
 FID_C
ClientSampleId :
 SAMPLE-7DL

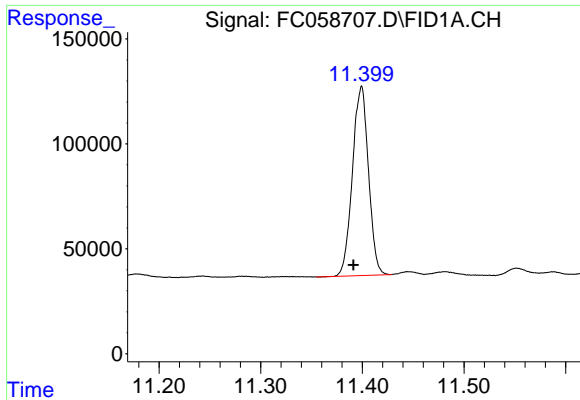
Manual Integrations
APPROVED

Reviewed By :Yogesh Patel 03/14/2022
 Supervised By :Ankita Jodhani 03/14/2022

Integration File: autoint1.e
 Quant Time: Mar 12 01:51:05 2022
 Quant Method : Z:\pestpcbsrv\HPCHEM1\FID_C\Method\Aliphatic EPH 022322.M
 Quant Title : GC Extractables
 QLast Update : Wed Feb 23 17:15:11 2022
 Response via : Initial Calibration
 Integrator: ChemStation 6890 Scale Mode: Large solvent peaks clipped

Volume Inj. : 1 ul
 Signal Phase : Rxi-1ms
 Signal Info : 20M x 0.18mm x 0.18um





#9 ortho-Terphenyl (SURR)

R.T.: 11.399 min
Delta R.T.: 0.008 min
Response: 987346
Conc: 6.78 ug/ml

Instrument :

FID_C

ClientSampleId :

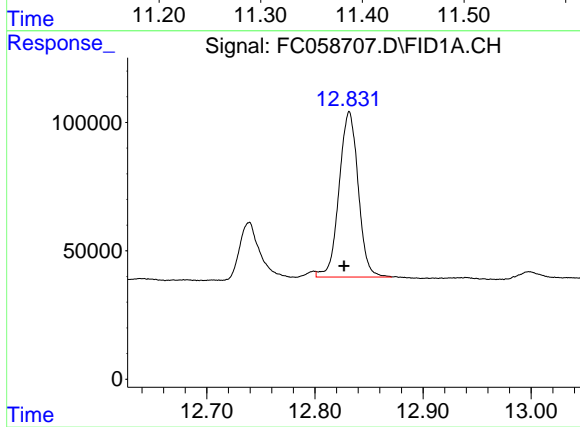
SAMPLE-7DL

Manual Integrations

APPROVED

Reviewed By :Yogesh Patel 03/14/2022

Supervised By :Ankita Jodhani 03/14/2022



#12 1-chlorooctadecane (SURR)

R.T.: 12.831 min
Delta R.T.: 0.005 min
Response: 791530
Conc: 6.98 ug/ml m