

Data Path : Z:\pestpcbsrv\HPCHEM1\FID\_C\Data\FC031819AL\  
 Data File : FC039956.D  
 Signal(s) : FID1A.CH  
 Acq On : 18 Mar 2019 11:09 pm  
 Operator : AJ\SJ  
 Sample : 20 PPM ALIPHATIC HC STD  
 Misc :  
 ALS Vial : 2 Sample Multiplier: 1

Integration File: sample.E  
 Quant Time: Mar 19 04:21:06 2019  
 Quant Method : Z:\pestpcbsrv\HPCHEM1\FID\_C\Method\Alaphatic EPH 022219.M  
 Quant Title : GC Extractables  
 QLast Update : Mon Feb 25 18:21:16 2019  
 Response via : Initial Calibration  
 Integrator: ChemStation 6890 Scale Mode: Large solvent peaks clipped

Volume Inj. : 1 ul  
 Signal Phase : Rxi-1ms  
 Signal Info : 20M x 0.18mm x 0.18um

Compound	R.T.	Response	Conc Units
-----			
System Monitoring Compounds			
9) S ortho-Terphenyl (SURR)	11.138	3094628	18.398 ug/ml
Spiked Amount	50.000	Recovery	= 36.80%
12) S 1-chlorooctadecane (S...	12.584	2287523	18.135 ug/ml
Spiked Amount	50.000	Recovery	= 36.27%
Target Compounds			
1) T n-Nonane (C9)	3.011	1861236	15.508 ug/ml
2) T n-Decane (C10)	4.060	1954324	16.222 ug/ml
3) T A~Naphthalene (C11.7)	5.611	2297725	17.658 ug/ml
4) T n-Dodecane (C12)	6.057	2106892	17.053 ug/ml
5) T A~2-methylnaphthalene...	6.656	2314148	17.844 ug/ml
6) T n-Tetradecane (C14)	7.834	2225336	17.472 ug/ml
7) T n-Hexadecane (C16)	9.420	2294660	17.707 ug/ml
8) T n-Octadecane (C18)	10.848	2318307	17.234 ug/ml
10) T n-Eicosane (C20)	12.147	2341632	17.958 ug/ml
11) T n-Heneicosane (C21)	12.755	2333458	18.399 ug/ml
13) T n-Docosane (C22)	13.336	2340930	18.584 ug/ml
14) T n-Tetracosane (C24)	14.431	2356113	18.851 ug/ml
15) T n-Hexacosane (C26)	15.446	2357556	18.900 ug/ml
16) T n-Octacosane (C28)	16.390	2351359	17.593 ug/ml
17) T n-Tricontane (C30)	17.273	2329826	15.875 ug/ml
18) T n-Dotriacontane (C32)	18.099	2230970	16.607 ug/ml
19) T n-Tetratriacontane (C34)	18.879	1961183	17.242 ug/mlm
20) T n-Hexatriacontane (C36)	19.613	1734432	17.983 ug/mlm
21) T n-Octatriacontane (C38)	20.312	1582675	17.237 ug/ml
22) T n-Tetracontane (C40)	21.065	1584602	17.460 ug/ml
-----			

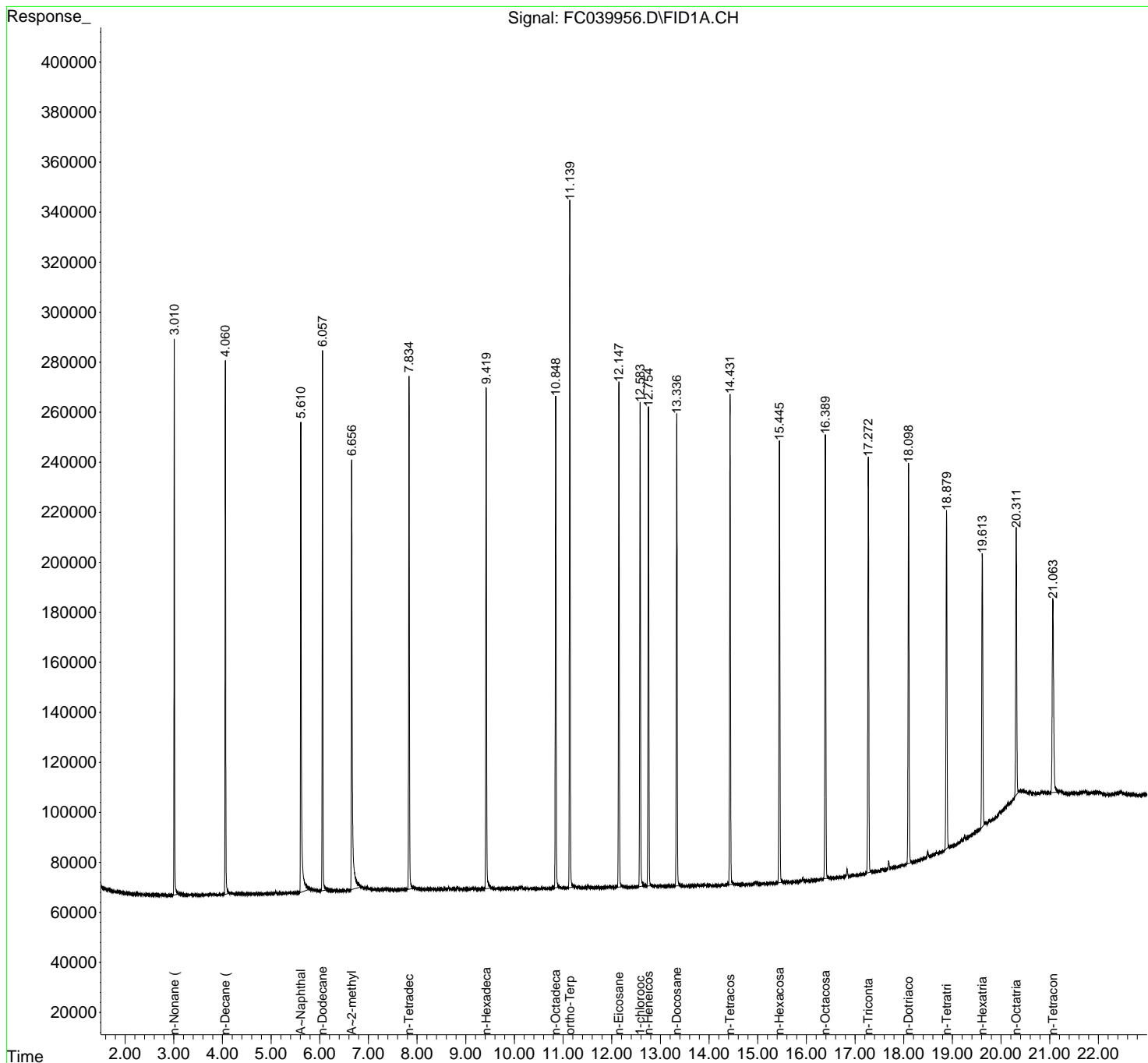
(f)=RT Delta > 1/2 Window

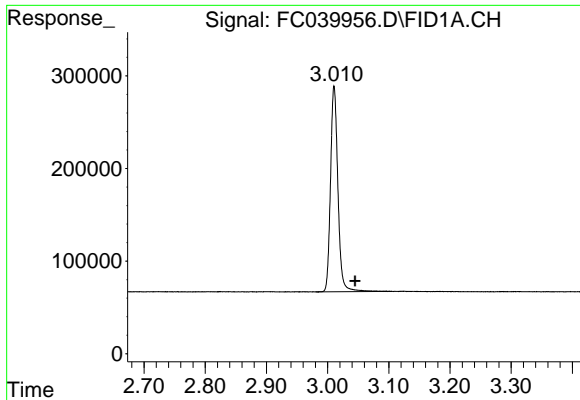
(m)=manual int.

Data Path : Z:\pestpcbsrv\HPCHEM1\FID\_C\Data\FC031819AL\  
 Data File : FC039956.D  
 Signal(s) : FID1A.CH  
 Acq On : 18 Mar 2019 11:09 pm  
 Operator : AJ\SJ  
 Sample : 20 PPM ALIPHATIC HC STD  
 Misc :  
 ALS Vial : 2 Sample Multiplier: 1

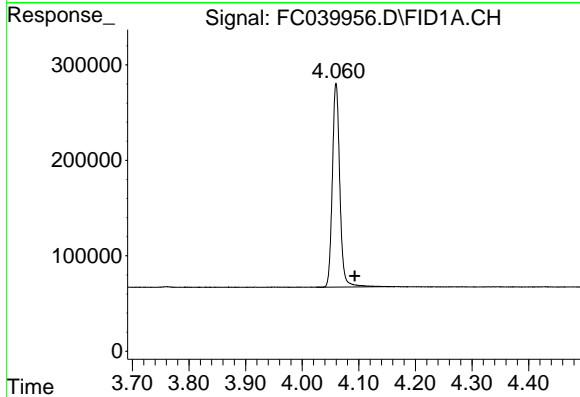
Integration File: sample.E  
 Quant Time: Mar 19 04:21:06 2019  
 Quant Method : Z:\pestpcbsrv\HPCHEM1\FID\_C\Method\Aliphatic EPH 022219.M  
 Quant Title : GC Extractables  
 QLast Update : Mon Feb 25 18:21:16 2019  
 Response via : Initial Calibration  
 Integrator: ChemStation 6890 Scale Mode: Large solvent peaks clipped

Volume Inj. : 1 ul  
 Signal Phase : Rxi-1ms  
 Signal Info : 20M x 0.18mm x 0.18um

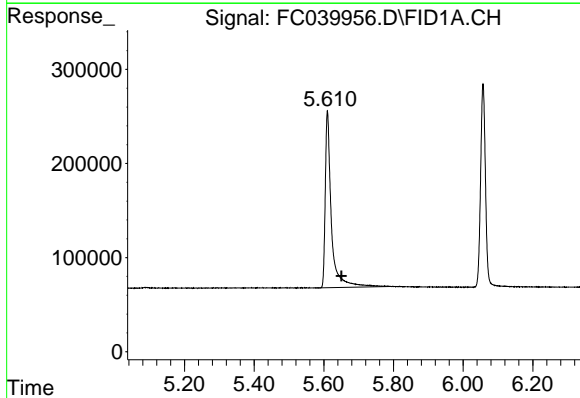




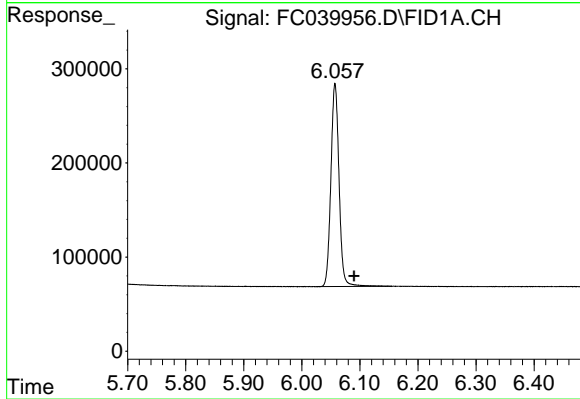
#1 n-Nonane (C9)  
R.T.: 3.011 min  
Delta R.T.: -0.034 min  
Response: 1861236  
Conc: 15.51 ug/ml



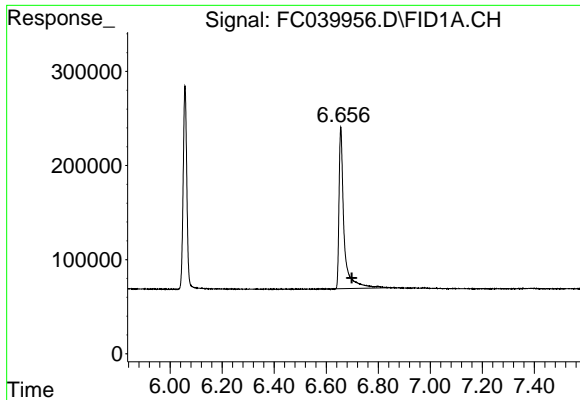
#2 n-Decane (C10)  
R.T.: 4.060 min  
Delta R.T.: -0.033 min  
Response: 1954324  
Conc: 16.22 ug/ml



#3 A~Naphthalene (C11.7)  
R.T.: 5.611 min  
Delta R.T.: -0.040 min  
Response: 2297725  
Conc: 17.66 ug/ml

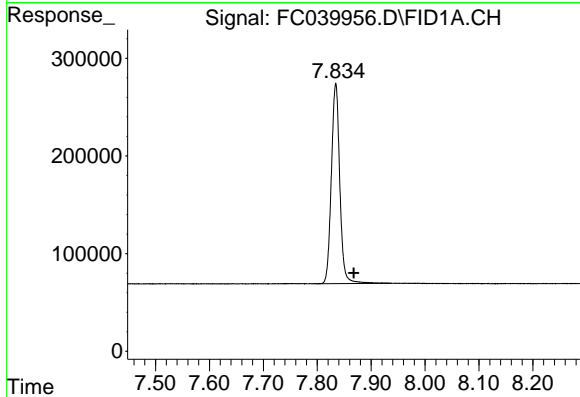


#4 n-Dodecane (C12)  
R.T.: 6.057 min  
Delta R.T.: -0.033 min  
Response: 2106892  
Conc: 17.05 ug/ml



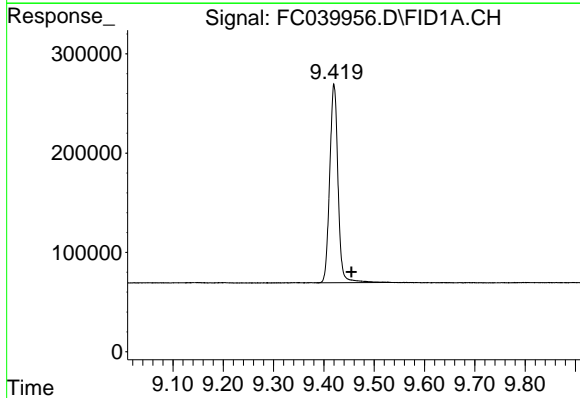
#5 A~2-methylnaphthalene (C12.89)

R.T.: 6.656 min  
Delta R.T.: -0.041 min  
Response: 2314148  
Conc: 17.84 ug/ml



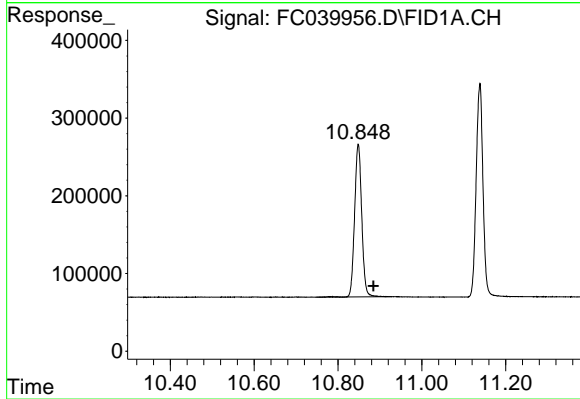
#6 n-Tetradecane (C14)

R.T.: 7.834 min  
Delta R.T.: -0.034 min  
Response: 2225336  
Conc: 17.47 ug/ml



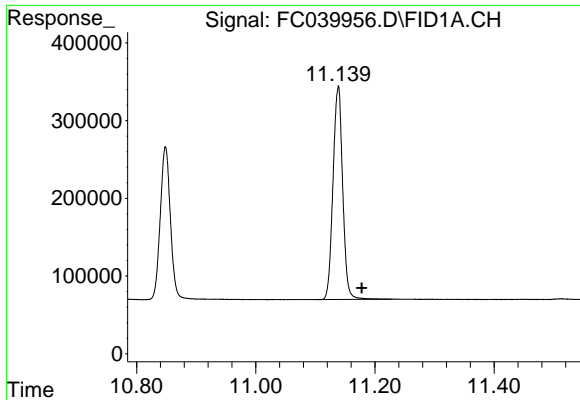
#7 n-Hexadecane (C16)

R.T.: 9.420 min  
Delta R.T.: -0.035 min  
Response: 2294660  
Conc: 17.71 ug/ml



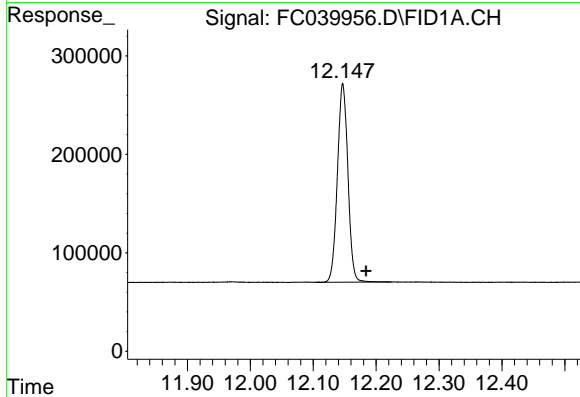
#8 n-Octadecane (C18)

R.T.: 10.848 min  
Delta R.T.: -0.036 min  
Response: 2318307  
Conc: 17.23 ug/ml



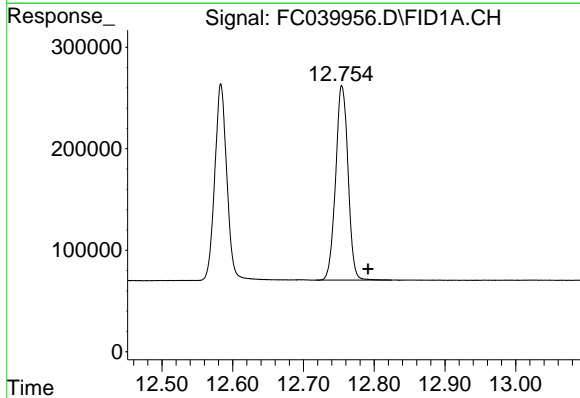
#9 ortho-Terphenyl (SURR)

R.T.: 11.138 min  
Delta R.T.: -0.040 min  
Response: 3094628  
Conc: 18.40 ug/ml



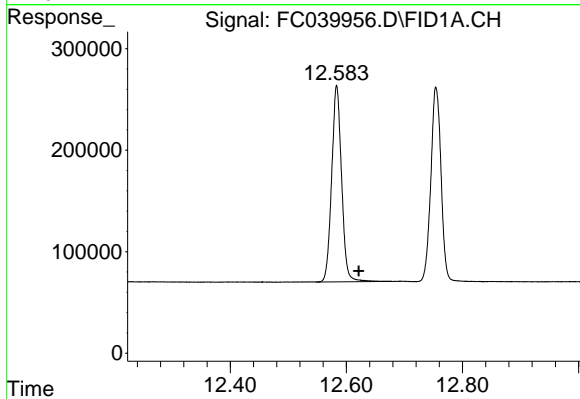
#10 n-Eicosane (C20)

R.T.: 12.147 min  
Delta R.T.: -0.037 min  
Response: 2341632  
Conc: 17.96 ug/ml



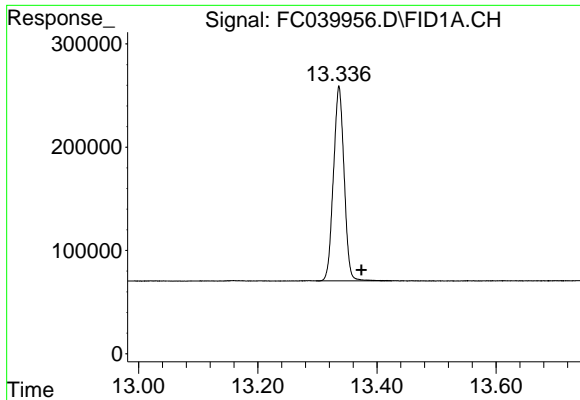
#11 n-Heneicosane (C21)

R.T.: 12.755 min  
Delta R.T.: -0.036 min  
Response: 2333458  
Conc: 18.40 ug/ml

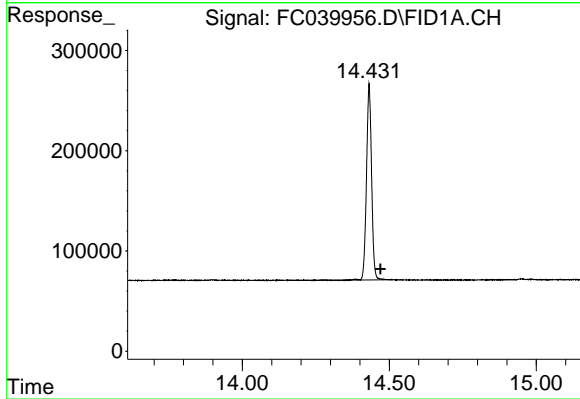


#12 1-chlorooctadecane (SURR)

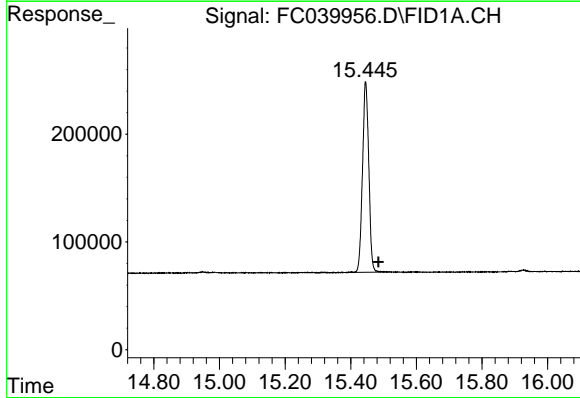
R.T.: 12.584 min  
Delta R.T.: -0.038 min  
Response: 2287523  
Conc: 18.13 ug/ml



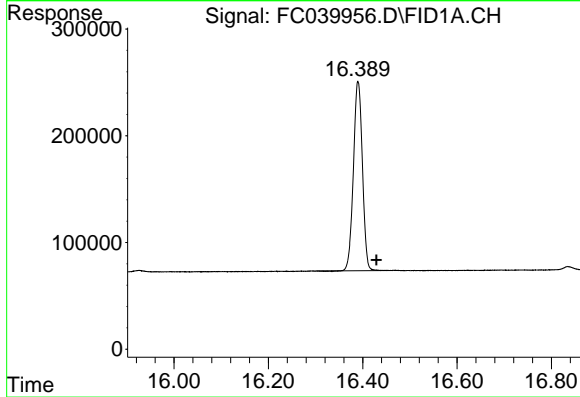
#13 n-Docosane (C22)  
R.T.: 13.336 min  
Delta R.T.: -0.038 min  
Response: 2340930  
Conc: 18.58 ug/ml



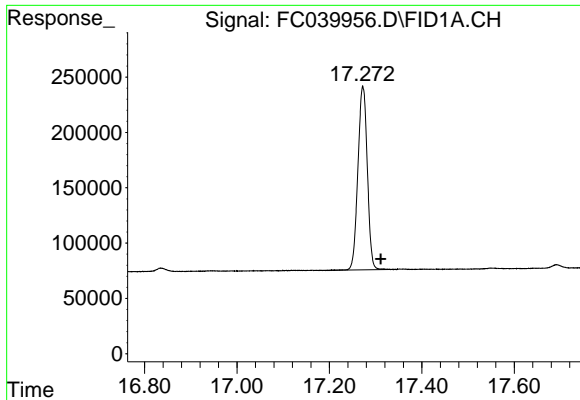
#14 n-Tetracosane (C24)  
R.T.: 14.431 min  
Delta R.T.: -0.039 min  
Response: 2356113  
Conc: 18.85 ug/ml



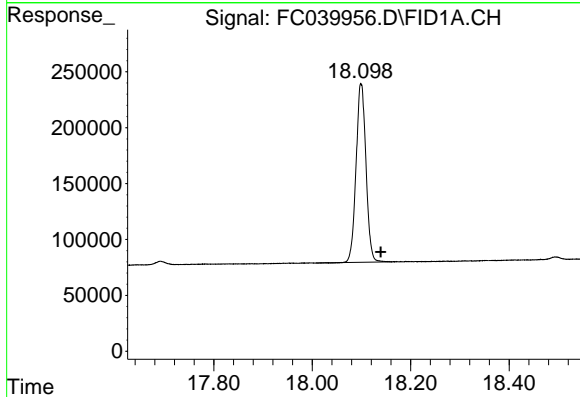
#15 n-Hexacosane (C26)  
R.T.: 15.446 min  
Delta R.T.: -0.039 min  
Response: 2357556  
Conc: 18.90 ug/ml



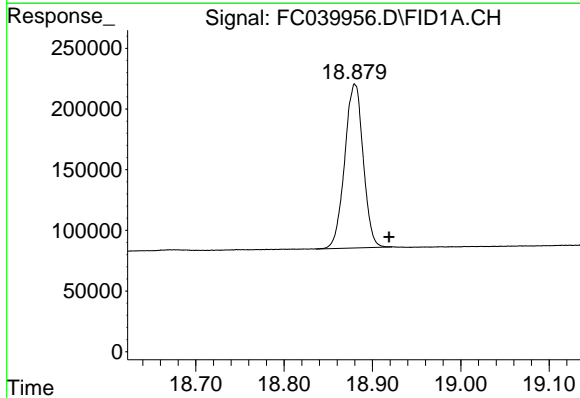
#16 n-Octacosane (C28)  
R.T.: 16.390 min  
Delta R.T.: -0.039 min  
Response: 2351359  
Conc: 17.59 ug/ml



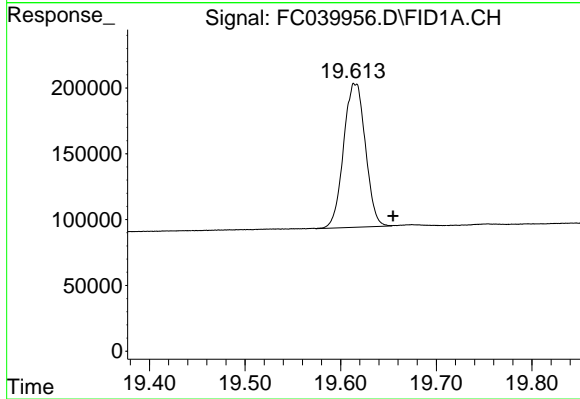
#17 n-Tricontane (C30)  
R.T.: 17.273 min  
Delta R.T.: -0.039 min  
Response: 2329826  
Conc: 15.88 ug/ml



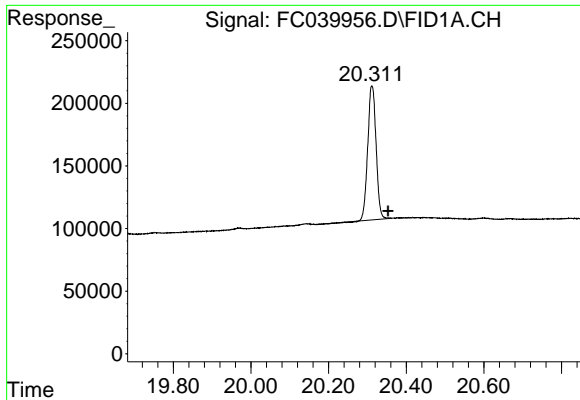
#18 n-Dotriacontane (C32)  
R.T.: 18.099 min  
Delta R.T.: -0.040 min  
Response: 2230970  
Conc: 16.61 ug/ml



#19 n-Tetratriacontane (C34)  
R.T.: 18.879 min  
Delta R.T.: -0.039 min  
Response: 1961183  
Conc: 17.24 ug/ml m

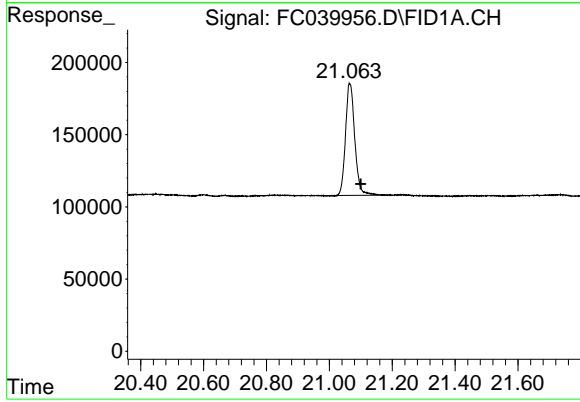


#20 n-Hexatriacontane (C36)  
R.T.: 19.613 min  
Delta R.T.: -0.042 min  
Response: 1734432  
Conc: 17.98 ug/ml m



#21 n-Octatriacontane (C38)

R.T.: 20.312 min  
Delta R.T.: -0.041 min  
Response: 1582675  
Conc: 17.24 ug/ml



#22 n-Tetracontane (C40)

R.T.: 21.065 min  
Delta R.T.: -0.035 min  
Response: 1584602  
Conc: 17.46 ug/ml