

Data Path : Z:\pestpcbsrv\HPCHEM1\FID_C\Data\FC031819AL\
 Data File : FC039963.D
 Signal(s) : FID1A.CH
 Acq On : 19 Mar 2019 3:14 am
 Operator : AJ\SJ
 Sample : K1697-11
 Misc :
 ALS Vial : 29 Sample Multiplier: 1

Integration File: sample.E
 Quant Time: Mar 19 04:22:59 2019
 Quant Method : Z:\pestpcbsrv\HPCHEM1\FID_C\Method\Alaphatic EPH 022219.M
 Quant Title : GC Extractables
 QLast Update : Mon Feb 25 18:21:16 2019
 Response via : Initial Calibration
 Integrator: ChemStation 6890 Scale Mode: Large solvent peaks clipped

Volume Inj. : 1 ul
 Signal Phase : Rxi-1ms
 Signal Info : 20M x 0.18mm x 0.18um

Compound	R.T.	Response	Conc Units

System Monitoring Compounds			
9) S ortho-Terphenyl (SURR)	11.138	4126016	24.530 ug/mlm
Spiked Amount	50.000	Recovery	= 49.06%
12) S 1-chlorooctadecane (S...	12.576	9766985	77.428 ug/mlm
Spiked Amount	50.000	Recovery	= 154.86%

Target Compounds

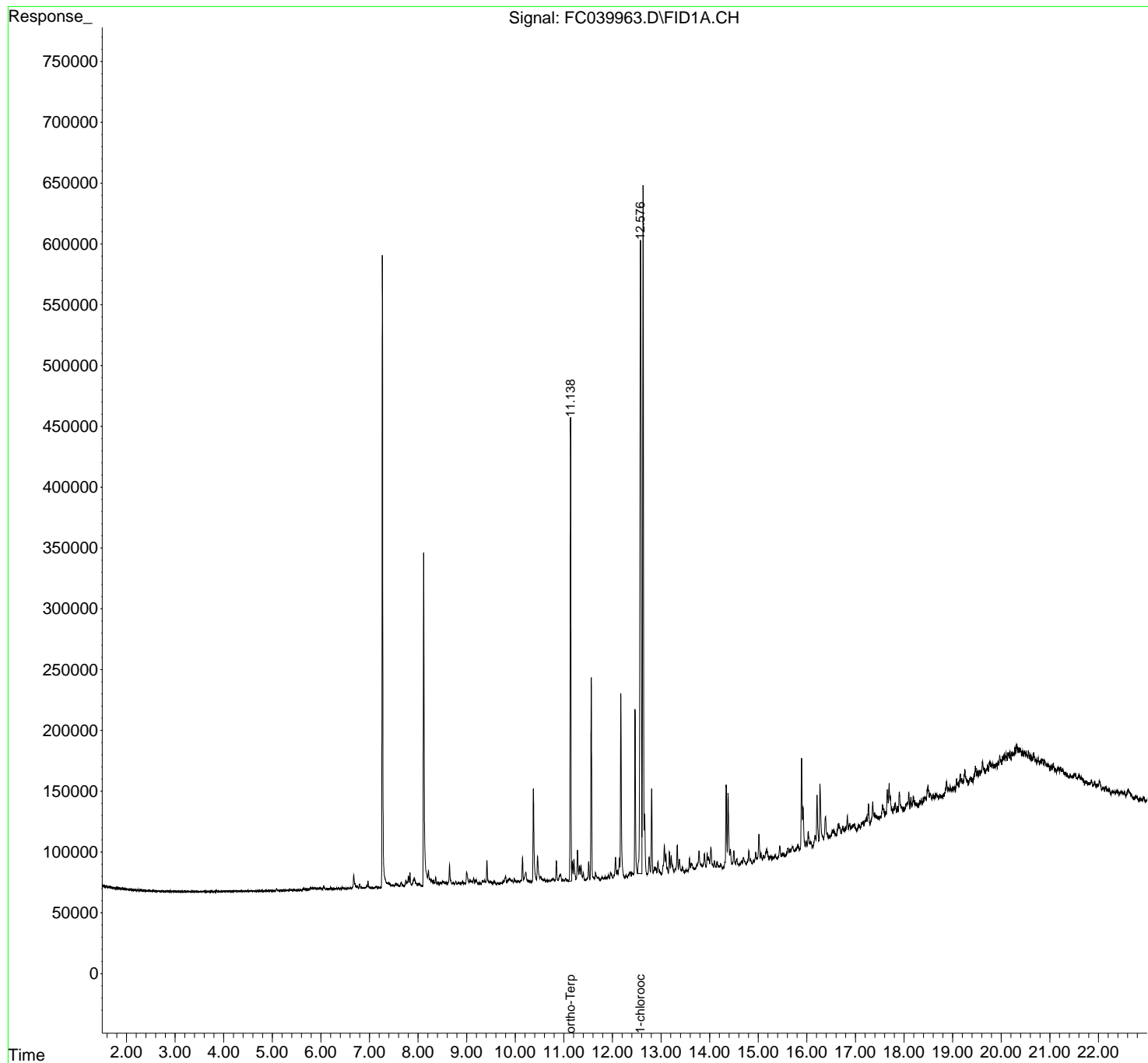
(f)=RT Delta > 1/2 Window

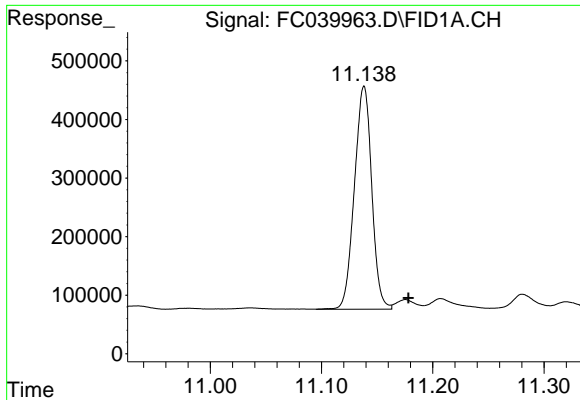
(m)=manual int.

Data Path : Z:\pestpcbsrv\HPCHEM1\FID_C\Data\FC031819AL\
 Data File : FC039963.D
 Signal(s) : FID1A.CH
 Acq On : 19 Mar 2019 3:14 am
 Operator : AJ\SJ
 Sample : K1697-11
 Misc :
 ALS Vial : 29 Sample Multiplier: 1

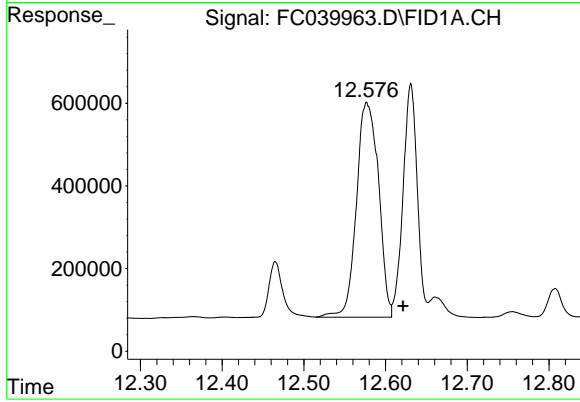
Integration File: sample.E
 Quant Time: Mar 19 04:22:59 2019
 Quant Method : Z:\pestpcbsrv\HPCHEM1\FID_C\Method\Alaphatic EPH 022219.M
 Quant Title : GC Extractables
 QLast Update : Mon Feb 25 18:21:16 2019
 Response via : Initial Calibration
 Integrator: ChemStation 6890 Scale Mode: Large solvent peaks clipped

Volume Inj. : 1 ul
 Signal Phase : Rxi-1ms
 Signal Info : 20M x 0.18mm x 0.18um





#9 ortho-Terphenyl (SURR)
R.T.: 11.138 min
Delta R.T.: -0.040 min
Response: 4126016
Conc: 24.53 ug/ml m



#12 1-chlorooctadecane (SURR)
R.T.: 12.576 min
Delta R.T.: -0.045 min
Response: 9766985
Conc: 77.43 ug/ml m