

Data Path : Z:\pestpcbsrv\HPCHEM1\FID_C\Data\FC031921AL\
Data File : FC052598.D
Signal(s) : FID1A.CH
Acq On : 20 Mar 2021 21:44
Operator : DD\AJ
Sample : M1732-15
Misc :
ALS Vial : 49 Sample Multiplier: 1

Instrument :
FID_C
ClientSampleId :
SB-7B-(4.0-4.5)

Integration File: autoint1.e
Quant Time: Mar 22 01:09:03 2021
Quant Method : Z:\pestpcbsrv\HPCHEM1\FID_C\Method\Alaphatic EPH 031721.M
Quant Title : GC Extractables
QLast Update : Wed Mar 17 03:47:28 2021
Response via : Initial Calibration
Integrator: ChemStation 6890 Scale Mode: Large solvent peaks clipped

Volume Inj. : 1 ul
Signal Phase : Rxi-1ms
Signal Info : 20M x 0.18mm x 0.18um

Compound	R.T.	Response	Conc Units

System Monitoring Compounds			
12) S 1-chlorooctadecane (S...	13.002	2352222	21.808 ug/ml
Spiked Amount	50.000	Recovery =	43.62%

Target Compounds

(f)=RT Delta > 1/2 Window

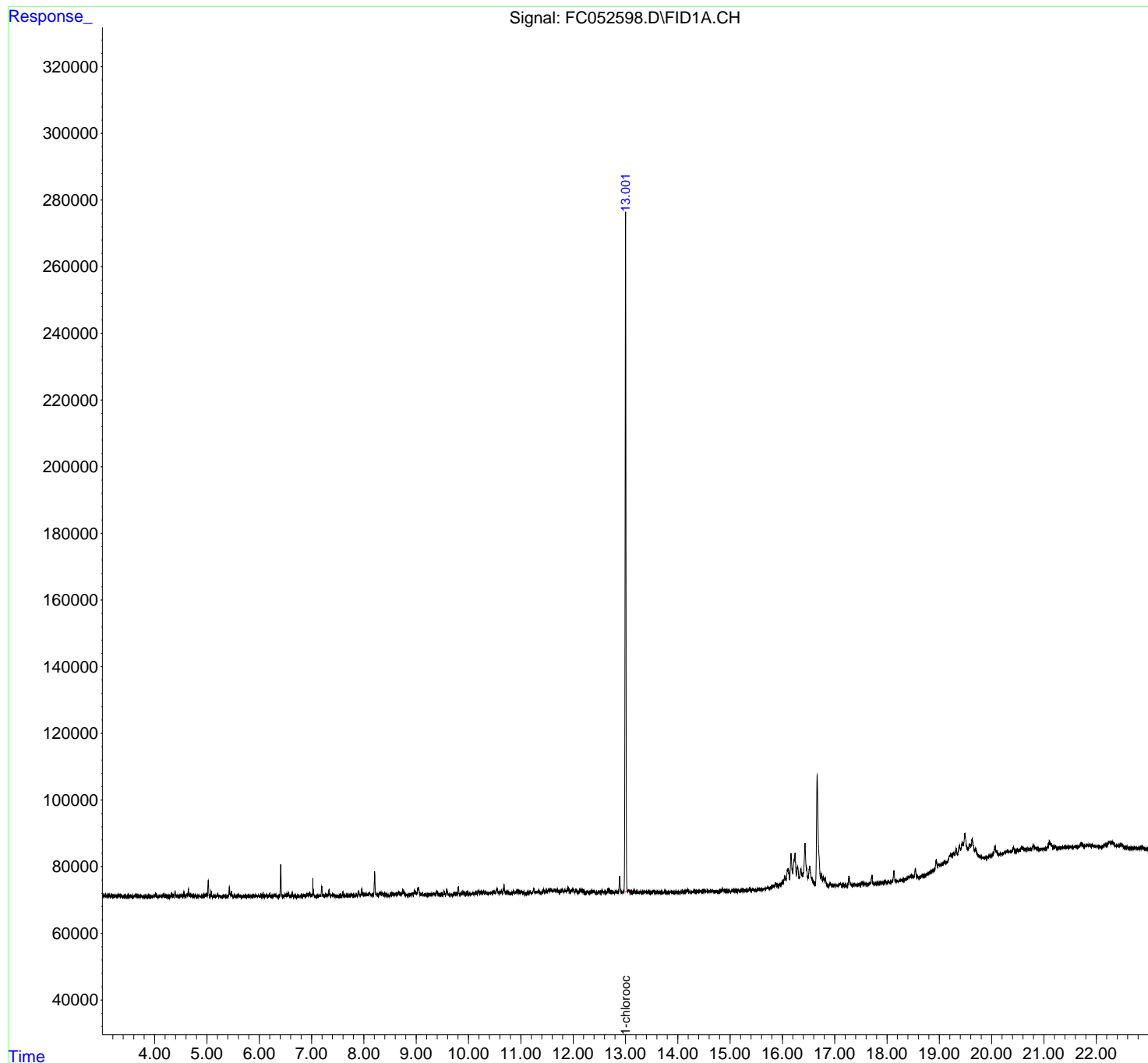
(m)=manual int.

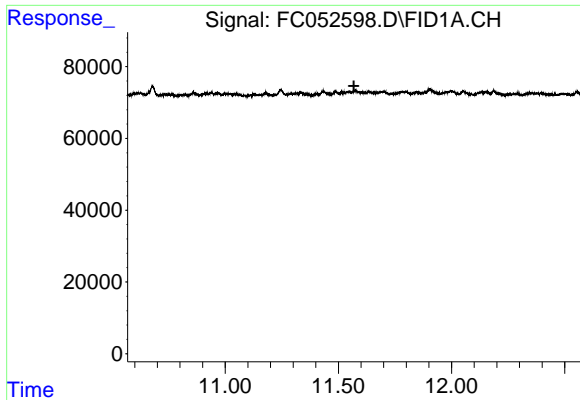
Data Path : Z:\pestpcbsrv\HPCHEM1\FID_C\Data\FC031921AL\
Data File : FC052598.D
Signal(s) : FID1A.CH
Acq On : 20 Mar 2021 21:44
Operator : DD\AJ
Sample : M1732-15
Misc :
ALS Vial : 49 Sample Multiplier: 1

Instrument :
FID_C
ClientSampleId :
SB-7B-(4.0-4.5)

Integration File: autoint1.e
Quant Time: Mar 22 01:09:03 2021
Quant Method : Z:\pestpcbsrv\HPCHEM1\FID_C\Method\Aliphatic EPH 031721.M
Quant Title : GC Extractables
QLast Update : Wed Mar 17 03:47:28 2021
Response via : Initial Calibration
Integrator: ChemStation 6890 Scale Mode: Large solvent peaks clipped

Volume Inj. : 1 ul
Signal Phase : Rxi-1ms
Signal Info : 20M x 0.18mm x 0.18um

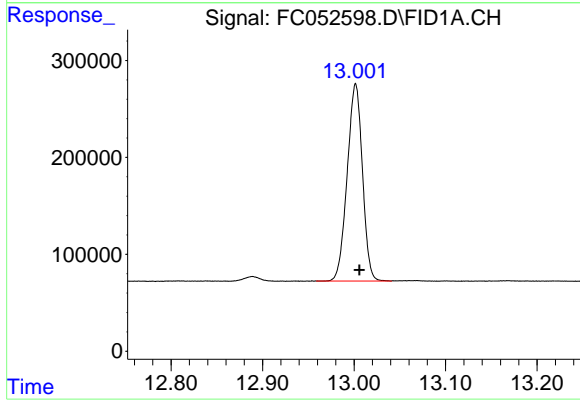




#9 ortho-Terphenyl (SURR)

R.T.: 0.000 min
Exp R.T.: 11.568 min
Response: 0
Conc: N.D.

Instrument :
FID_C
ClientSampleId :
SB-7B-(4.0-4.5)



#12 1-chlorooctadecane (SURR)

R.T.: 13.002 min
Delta R.T.: -0.004 min
Response: 2352222
Conc: 21.81 ug/ml