

Data Path : Z:\pestpcbsrv\HPCHEM1\FID_C\Data\FC032221AL\
 Data File : FC052643.D
 Signal(s) : FID1A.CH
 Acq On : 23 Mar 2021 11:31
 Operator : DD\AJ
 Sample : M1757-06
 Misc :
 ALS Vial : 32 Sample Multiplier: 1

Instrument :
 FID_C
 ClientSampleId :

Integration File: autoint1.e
 Quant Time: Mar 23 12:47:45 2021
 Quant Method : Z:\pestpcbsrv\HPCHEM1\FID_C\Method\Alaphatic EPH 031721.M
 Quant Title : GC Extractables
 QLast Update : Wed Mar 17 03:47:28 2021
 Response via : Initial Calibration
 Integrator: ChemStation 6890 Scale Mode: Large solvent peaks clipped

Volume Inj. : 1 ul
 Signal Phase : Rxi-1ms
 Signal Info : 20M x 0.18mm x 0.18um

Compound	R.T.	Response	Conc Units

System Monitoring Compounds			
12) S 1-chlorooctadecane (S...	13.004	2319578	21.506 ug/ml
Spiked Amount 50.000		Recovery =	43.01%
Target Compounds			
4) T n-Dodecane (C12)	6.409	122626	1.021 ug/ml
6) T n-Tetradecane (C14)	8.206	82851	0.685 ug/ml

(f)=RT Delta > 1/2 Window

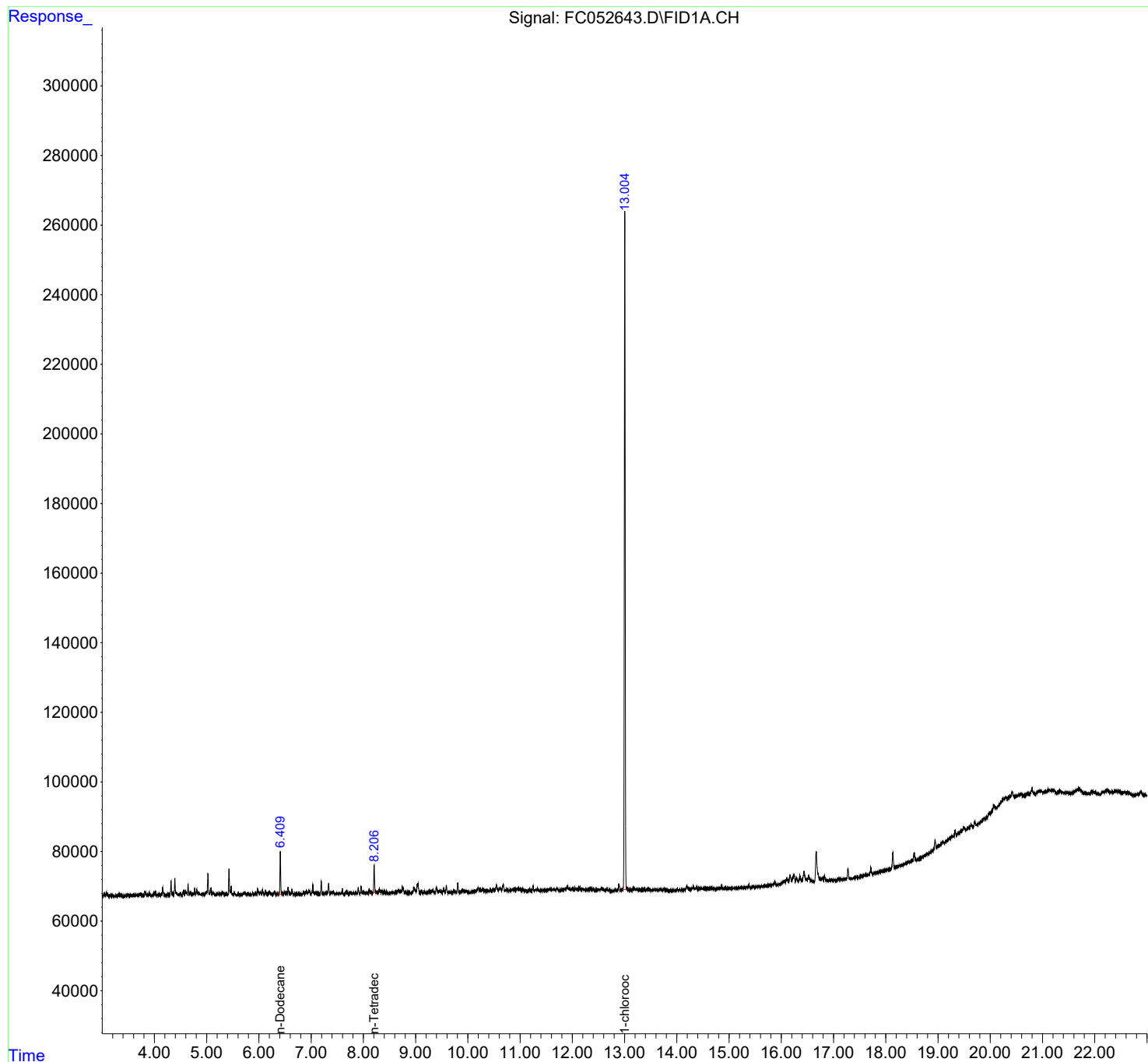
(m)=manual int.

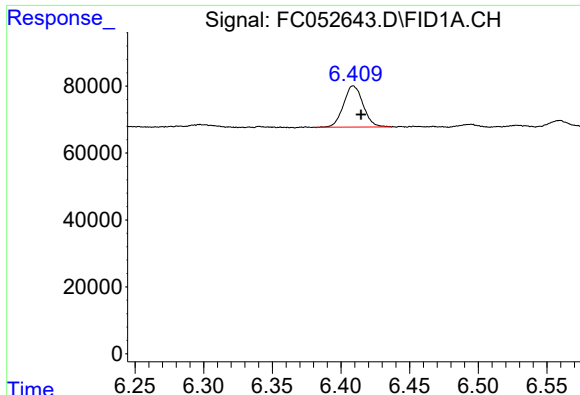
Data Path : Z:\pestpcbsrv\HPCHEM1\FID_C\Data\FC032221AL\
Data File : FC052643.D
Signal(s) : FID1A.CH
Acq On : 23 Mar 2021 11:31
Operator : DD\AJ
Sample : M1757-06
Misc :
ALS Vial : 32 Sample Multiplier: 1

Instrument :
FID_C
ClientSampleId :

Integration File: autoint1.e
Quant Time: Mar 23 12:47:45 2021
Quant Method : Z:\pestpcbsrv\HPCHEM1\FID_C\Method\Alaphatic EPH 031721.M
Quant Title : GC Extractables
QLast Update : Wed Mar 17 03:47:28 2021
Response via : Initial Calibration
Integrator: ChemStation 6890 Scale Mode: Large solvent peaks clipped

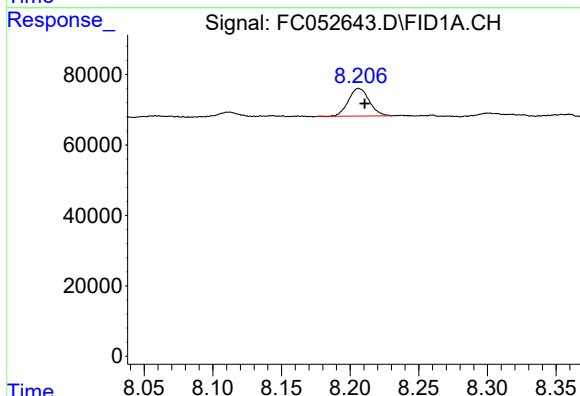
Volume Inj. : 1 ul
Signal Phase : Rxi-1ms
Signal Info : 20M x 0.18mm x 0.18um



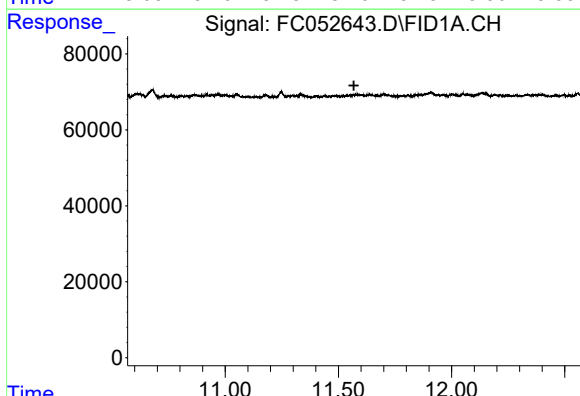


#4 n-Dodecane (C12)
 R.T.: 6.409 min
 Delta R.T.: -0.006 min
 Response: 122626
 Conc: 1.02 ug/ml

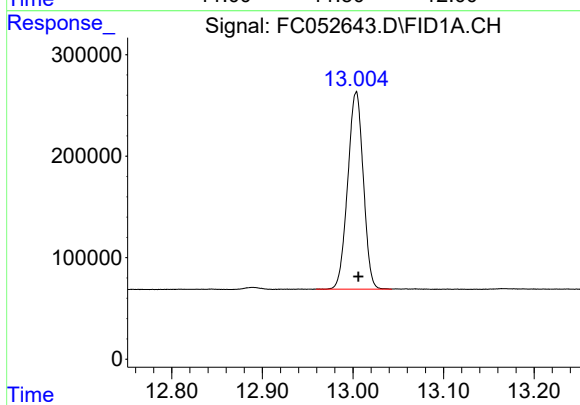
Instrument :
 FID_C
 ClientSampleId :



#6 n-Tetradecane (C14)
 R.T.: 8.206 min
 Delta R.T.: -0.004 min
 Response: 82851
 Conc: 0.69 ug/ml



#9 ortho-Terphenyl (SURR)
 R.T.: 0.000 min
 Exp R.T. : 11.568 min
 Response: 0
 Conc: N.D.



#12 1-chlorooctadecane (SURR)
 R.T.: 13.004 min
 Delta R.T.: -0.002 min
 Response: 2319578
 Conc: 21.51 ug/ml