

Data Path : Z:\pestpcbsrv\HPCHEM1\FID_C\Data\FC032223AL\
 Data File : FC063206.D
 Signal(s) : FID1A.ch
 Acq On : 22 Mar 2023 09:14
 Operator : YP/AJ
 Sample : 20 PPM ALIPHATIC HC STD
 Misc :
 ALS Vial : 3 Sample Multiplier: 1

Instrument :
 FID_C
 ClientSampleId :
 20 PPM ALIPHATIC HC STD

Integration File: autoint1.e
 Quant Time: Mar 23 00:19:00 2023
 Quant Method : Z:\pestpcbsrv\HPCHEM1\FID_C\Method\Aliphatic EPH 031523.M
 Quant Title : GC Extractables
 QLast Update : Thu Mar 16 01:30:46 2023
 Response via : Initial Calibration
 Integrator: ChemStation

Volume Inj. : 1 ul
 Signal Phase : Rxi-1ms
 Signal Info : 20M x 0.18mm x 0.18um

Compound	R.T.	Response	Conc Units

System Monitoring Compounds			
9) S ortho-Terphenyl (SURR)	11.529	2710957	20.707 ug/ml
Spiked Amount	50.000	Recovery	= 41.41%
12) S 1-chlorooctadecane (S...	12.967	2072717	21.481 ug/ml
Spiked Amount	50.000	Recovery	= 42.96%
Target Compounds			
1) T n-Nonane (C9)	3.292	2421167	20.016 ug/ml
2) T n-Decane (C10)	4.360	2415640	20.530 ug/ml
3) T A~Naphthalene (C11.7)	5.943	2678521	20.801 ug/ml
4) T n-Dodecane (C12)	6.380	2411185	20.520 ug/ml
5) T A~2-methylnaphthalene...	7.001	2475807	21.049 ug/ml
6) T n-Tetradecane (C14)	8.175	2388659	20.748 ug/ml
7) T n-Hexadecane (C16)	9.775	2444433	20.982 ug/ml
8) T n-Octadecane (C18)	11.216	2489357	21.056 ug/ml
10) T n-Eicosane (C20)	12.524	2426825	21.067 ug/ml
11) T n-Heneicosane (C21)	13.135	2429758	21.081 ug/ml
13) T n-Docosane (C22)	13.719	2448795	21.505 ug/ml
14) T n-Tetracosane (C24)	14.821	2440721	21.468 ug/ml
15) T n-Hexacosane (C26)	15.839	2463296	21.889 ug/ml
16) T n-Octacosane (C28)	16.788	2530025	22.481 ug/ml
17) T n-Tricontane (C30)	17.673	2693753	23.684 ug/ml
18) T n-Dotriacontane (C32)	18.504	2815515	24.335 ug/ml
19) T n-Tetratriacontane (C34)	19.286	2695856	23.454 ug/ml
20) T n-Hexatriacontane (C36)	20.024	2490648	22.793 ug/ml
21) T n-Octatriacontane (C38)	20.750	2446248	22.640 ug/ml
22) T n-Tetracontane (C40)	21.646	2399122	22.656 ug/ml

(f)=RT Delta > 1/2 Window

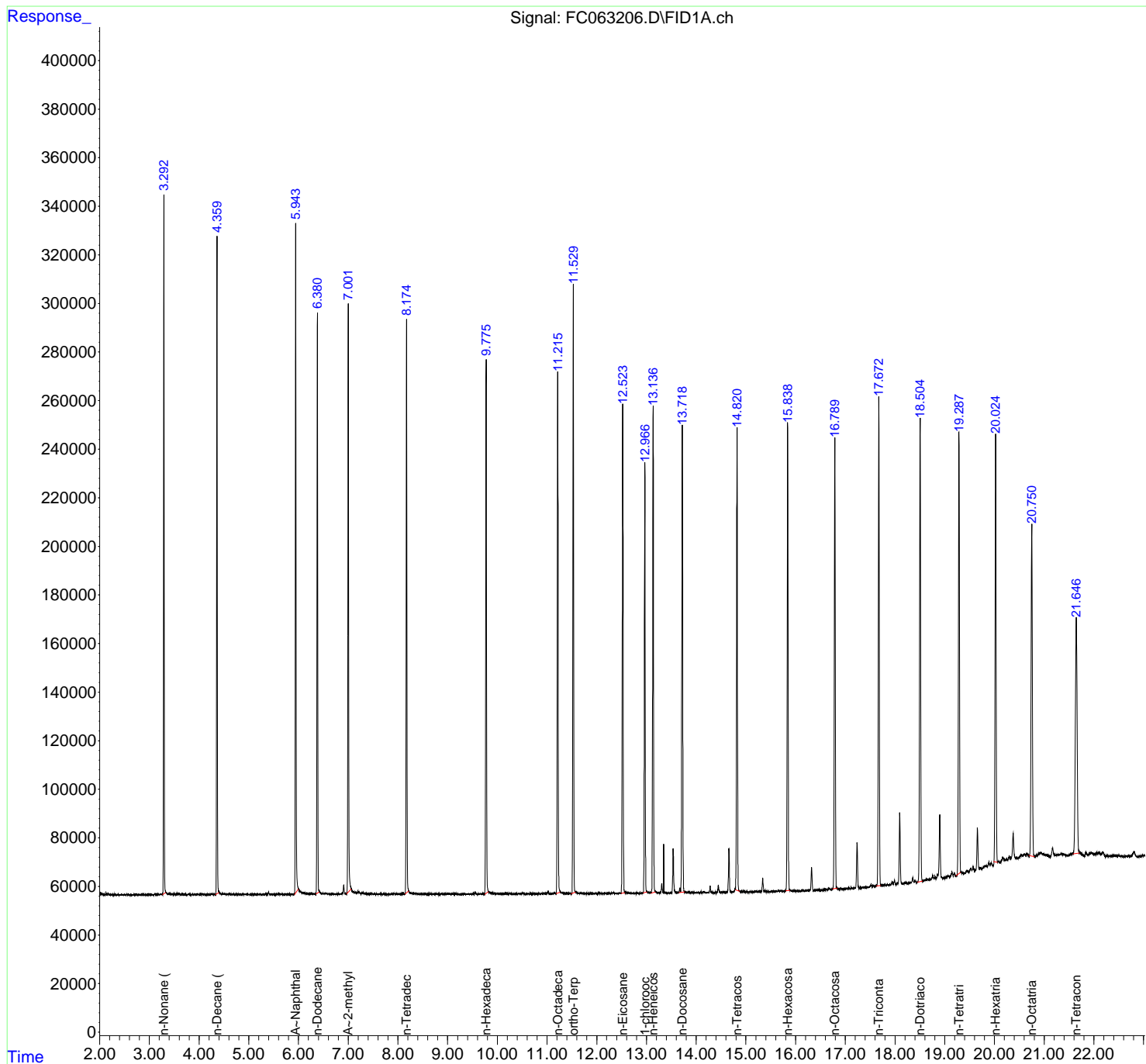
(m)=manual int.

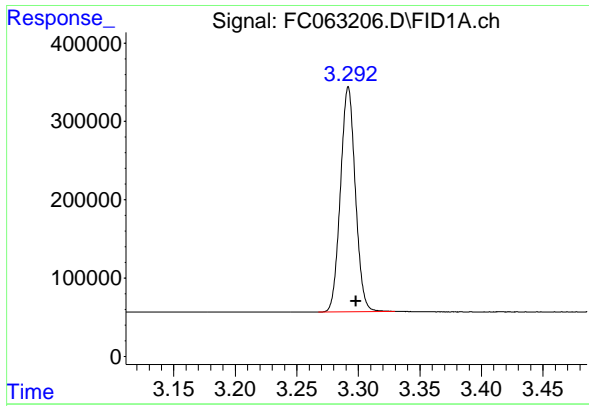
Data Path : Z:\pestpcbsrv\HPCHEM1\FID_C\Data\FC032223AL\
 Data File : FC063206.D
 Signal(s) : FID1A.ch
 Acq On : 22 Mar 2023 09:14
 Operator : YP/AJ
 Sample : 20 PPM ALIPHATIC HC STD
 Misc :
 ALS Vial : 3 Sample Multiplier: 1

Instrument :
 FID_C
 ClientSampleId :
 20 PPM ALIPHATIC HC STD

Integration File: autoint1.e
 Quant Time: Mar 23 00:19:00 2023
 Quant Method : Z:\pestpcbsrv\HPCHEM1\FID_C\Method\Aliphatic EPH 031523.M
 Quant Title : GC Extractables
 QLast Update : Thu Mar 16 01:30:46 2023
 Response via : Initial Calibration
 Integrator: ChemStation

Volume Inj. : 1 ul
 Signal Phase : Rxi-1ms
 Signal Info : 20M x 0.18mm x 0.18um

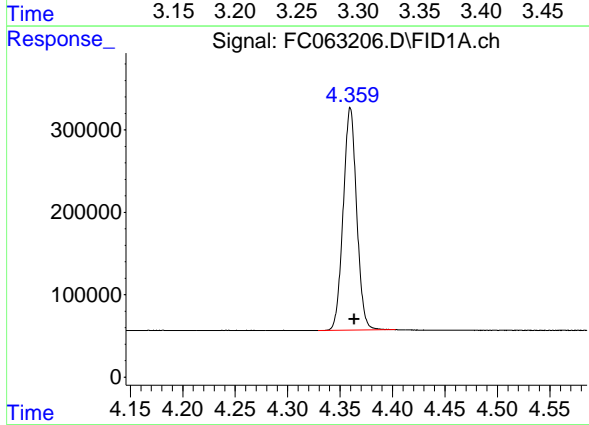




#1 n-Nonane (C9)

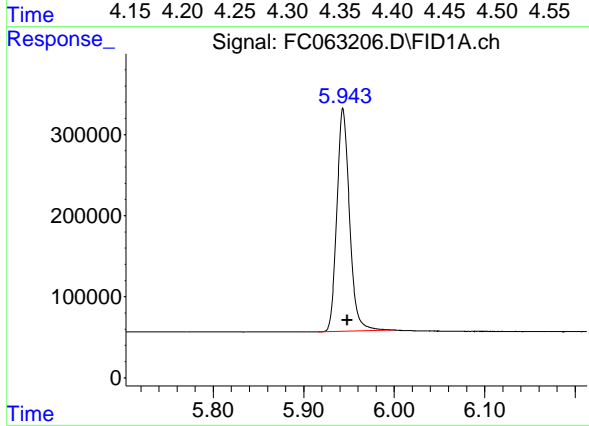
R.T.: 3.292 min
 Delta R.T.: -0.006 min
 Response: 2421167
 Conc: 20.02 ug/ml

Instrument : FID_C
 ClientSampleId : 20 PPM ALIPHATIC HC STD



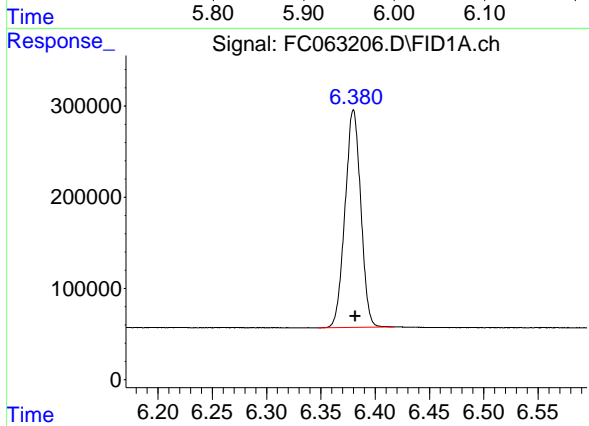
#2 n-Decane (C10)

R.T.: 4.360 min
 Delta R.T.: -0.004 min
 Response: 2415640
 Conc: 20.53 ug/ml



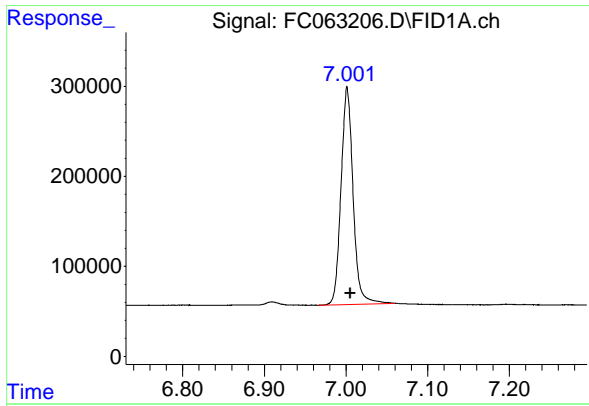
#3 A~Naphthalene (C11.7)

R.T.: 5.943 min
 Delta R.T.: -0.004 min
 Response: 2678521
 Conc: 20.80 ug/ml



#4 n-Dodecane (C12)

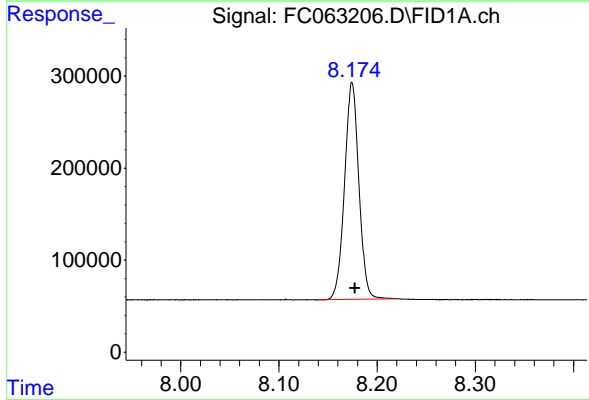
R.T.: 6.380 min
 Delta R.T.: -0.002 min
 Response: 2411185
 Conc: 20.52 ug/ml



#5 A~2-methylnaphthalene (C12.89)

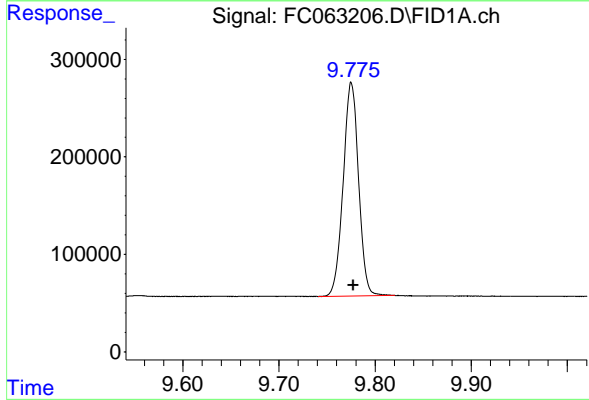
R.T.: 7.001 min
Delta R.T.: -0.004 min
Response: 2475807
Conc: 21.05 ug/ml

Instrument :
FID_C
ClientSampleId :
20 PPM ALIPHATIC HC STD



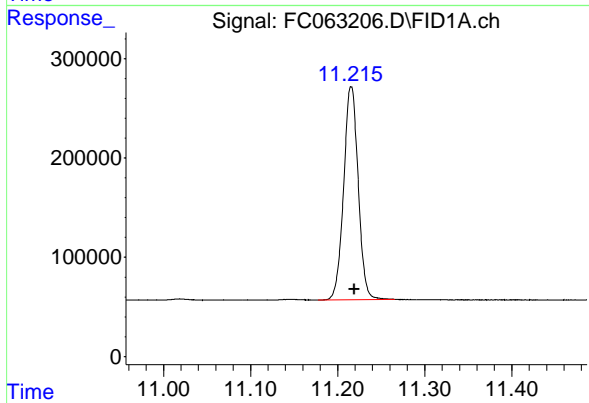
#6 n-Tetradecane (C14)

R.T.: 8.175 min
Delta R.T.: -0.003 min
Response: 2388659
Conc: 20.75 ug/ml



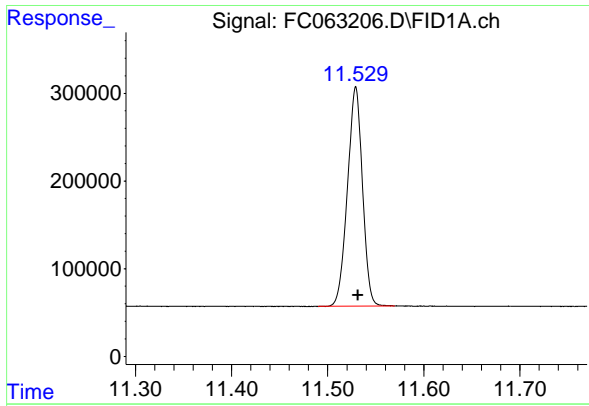
#7 n-Hexadecane (C16)

R.T.: 9.775 min
Delta R.T.: -0.002 min
Response: 2444433
Conc: 20.98 ug/ml



#8 n-Octadecane (C18)

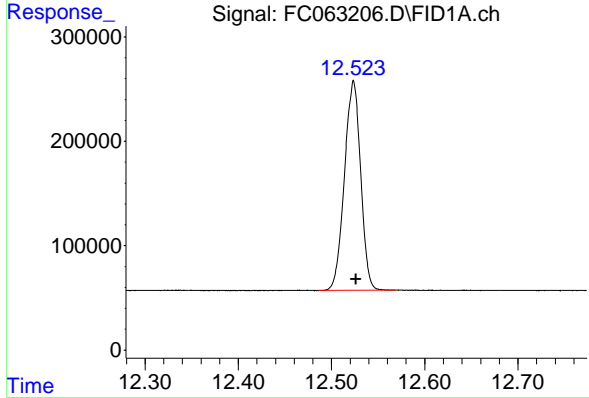
R.T.: 11.216 min
Delta R.T.: -0.004 min
Response: 2489357
Conc: 21.06 ug/ml



#9 ortho-Terphenyl (SURR)

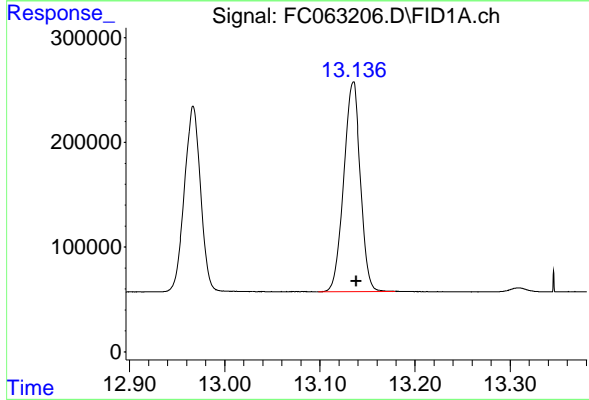
R.T.: 11.529 min
 Delta R.T.: -0.003 min
 Response: 2710957
 Conc: 20.71 ug/ml

Instrument : FID_C
 ClientSampleId : 20 PPM ALIPHATIC HC STD



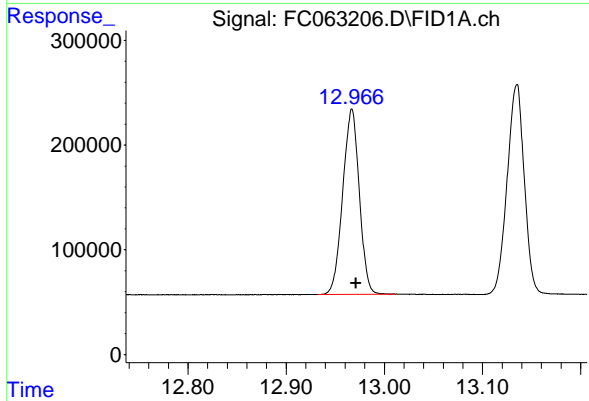
#10 n-Eicosane (C20)

R.T.: 12.524 min
 Delta R.T.: -0.002 min
 Response: 2426825
 Conc: 21.07 ug/ml



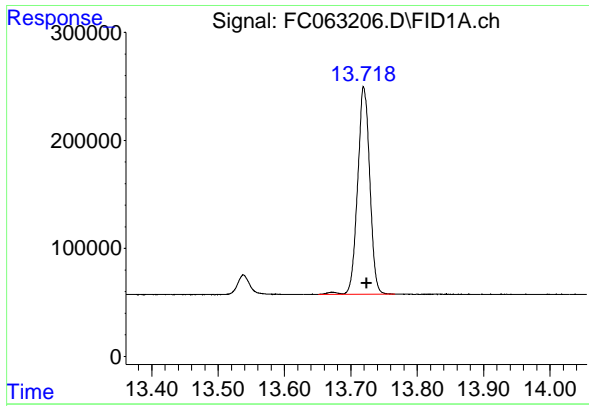
#11 n-Heneicosane (C21)

R.T.: 13.135 min
 Delta R.T.: -0.003 min
 Response: 2429758
 Conc: 21.08 ug/ml



#12 1-chlorooctadecane (SURR)

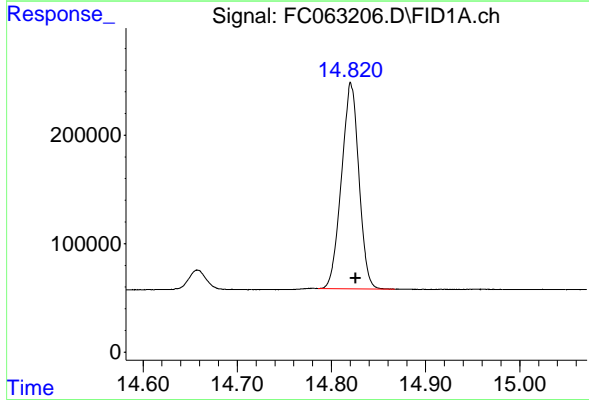
R.T.: 12.967 min
 Delta R.T.: -0.004 min
 Response: 2072717
 Conc: 21.48 ug/ml



#13 n-Docosane (C22)

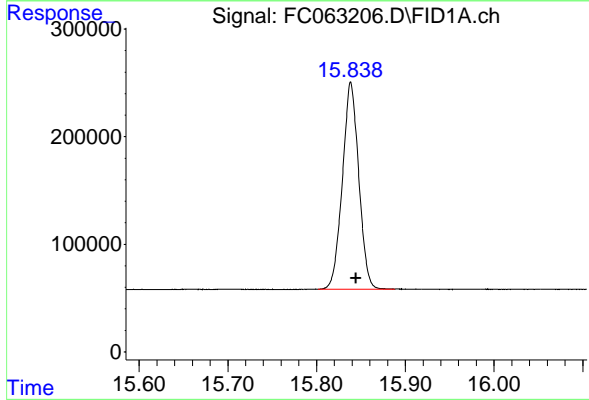
R.T.: 13.719 min
 Delta R.T.: -0.004 min
 Response: 2448795
 Conc: 21.50 ug/ml

Instrument : FID_C
 ClientSampleId : 20 PPM ALIPHATIC HC STD



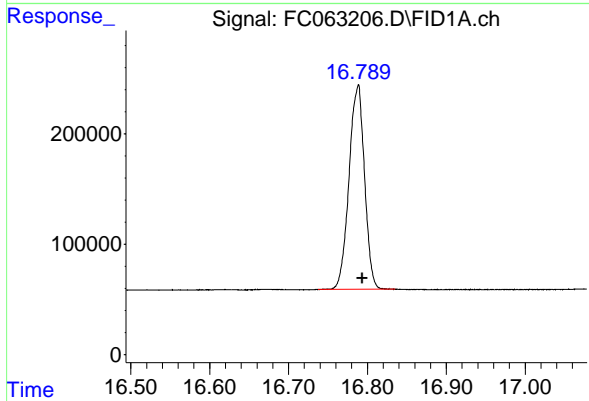
#14 n-Tetracosane (C24)

R.T.: 14.821 min
 Delta R.T.: -0.005 min
 Response: 2440721
 Conc: 21.47 ug/ml



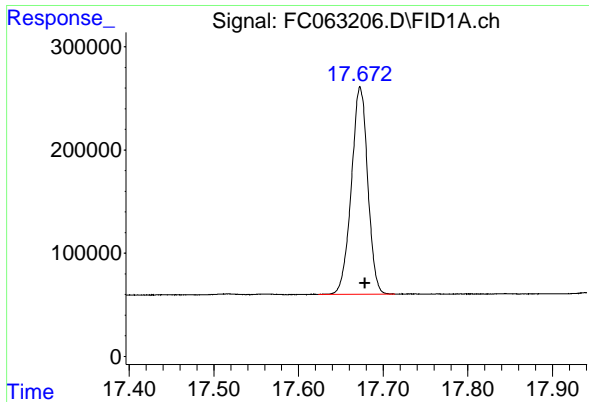
#15 n-Hexacosane (C26)

R.T.: 15.839 min
 Delta R.T.: -0.006 min
 Response: 2463296
 Conc: 21.89 ug/ml



#16 n-Octacosane (C28)

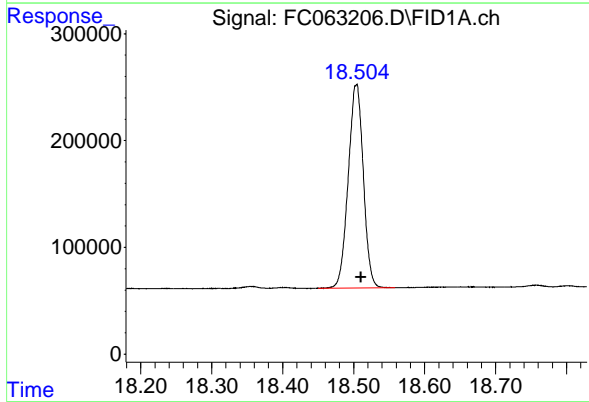
R.T.: 16.788 min
 Delta R.T.: -0.005 min
 Response: 2530025
 Conc: 22.48 ug/ml



#17 n-Tricontane (C30)

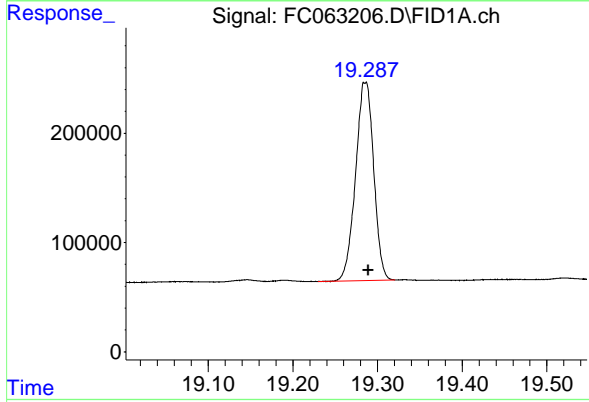
R.T.: 17.673 min
Delta R.T.: -0.006 min
Response: 2693753
Conc: 23.68 ug/ml

Instrument : FID_C
ClientSampleId : 20 PPM ALIPHATIC HC STD



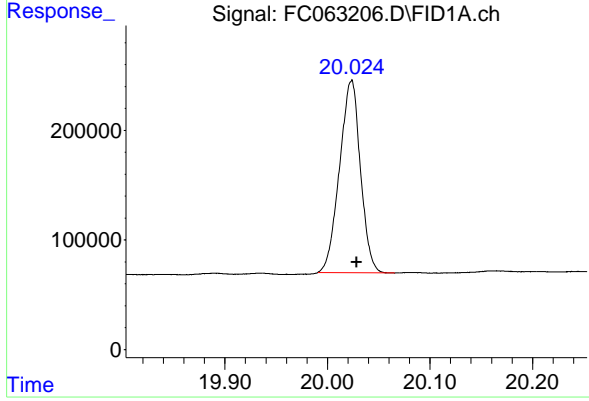
#18 n-Dotriacontane (C32)

R.T.: 18.504 min
Delta R.T.: -0.007 min
Response: 2815515
Conc: 24.33 ug/ml



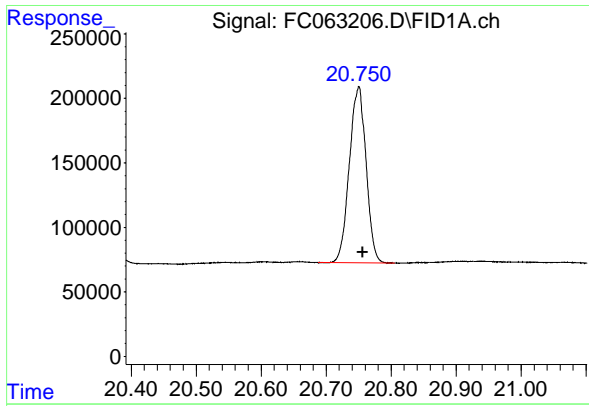
#19 n-Tetraatriacontane (C34)

R.T.: 19.286 min
Delta R.T.: -0.004 min
Response: 2695856
Conc: 23.45 ug/ml



#20 n-Hexatriacontane (C36)

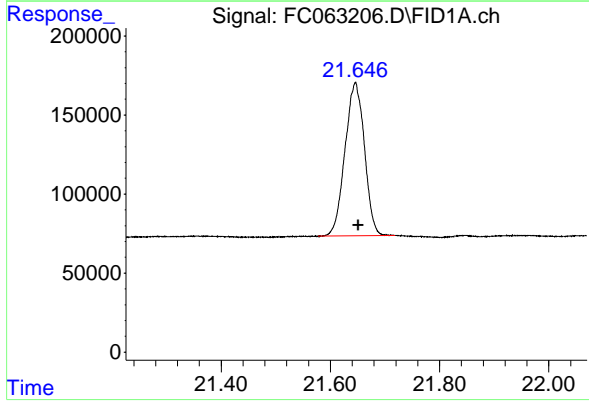
R.T.: 20.024 min
Delta R.T.: -0.005 min
Response: 2490648
Conc: 22.79 ug/ml



#21 n-Octatriacontane (C38)

R.T.: 20.750 min
 Delta R.T.: -0.006 min
 Response: 2446248
 Conc: 22.64 ug/ml

Instrument :
 FID_C
 ClientSampleId :
 20 PPM ALIPHATIC HC STD



#22 n-Tetracontane (C40)

R.T.: 21.646 min
 Delta R.T.: -0.006 min
 Response: 2399122
 Conc: 22.66 ug/ml