

Data Path : Z:\pestpcbsrv\HPCHEM1\FID\_C\Data\FC032320AL\  
 Data File : FC046447.D  
 Signal(s) : FID1A.CH  
 Acq On : 23 Mar 2020 20:29  
 Operator : DD\AJ  
 Sample : I.BLK  
 Misc :  
 ALS Vial : 9 Sample Multiplier: 1

Instrument :  
 FID\_C  
 ClientSampleId :  
 I.BLK

Integration File: sample.E  
 Quant Time: Mar 24 04:22:53 2020  
 Quant Method : Z:\pestpcbsrv\HPCHEM1\FID\_C\Method\Alaphatic EPH 032320.M  
 Quant Title : GC Extractables  
 QLast Update : Tue Mar 24 03:33:56 2020  
 Response via : Initial Calibration  
 Integrator: ChemStation 6890 Scale Mode: Large solvent peaks clipped

Volume Inj. : 1 ul  
 Signal Phase : Rxi-1ms  
 Signal Info : 20M x 0.18mm x 0.18um

Compound	R.T.	Response	Conc Units
-----			
System Monitoring Compounds			
Target Compounds			
-----			

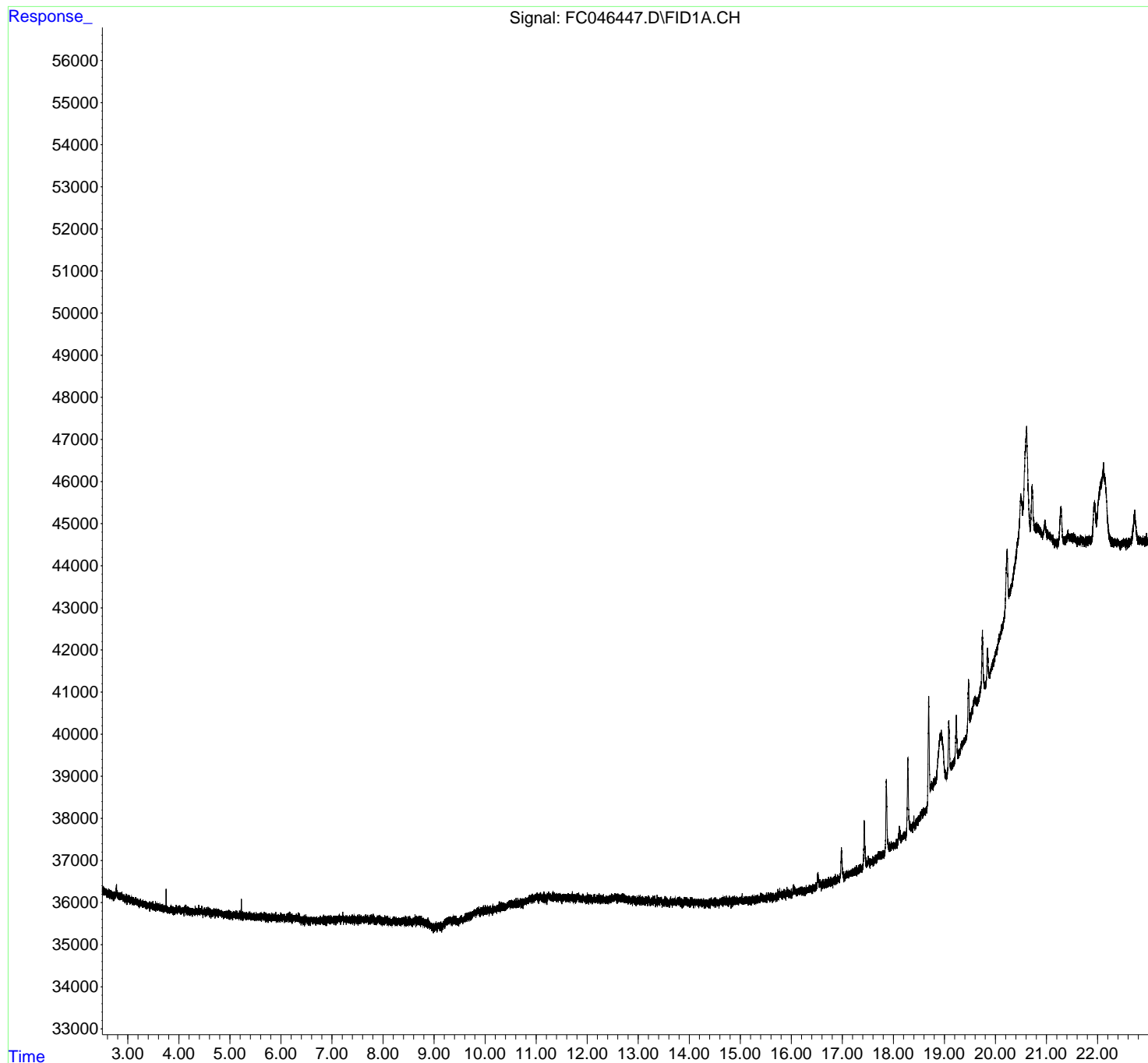
(f)=RT Delta > 1/2 Window (m)=manual int.

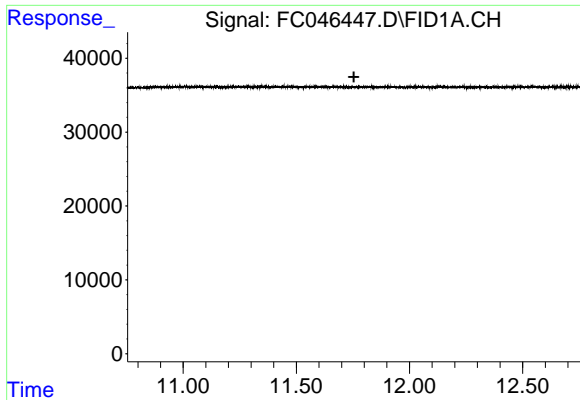
Data Path : Z:\pestpcbsrv\HPCHEM1\FID\_C\Data\FC032320AL\  
Data File : FC046447.D  
Signal(s) : FID1A.CH  
Acq On : 23 Mar 2020 20:29  
Operator : DD\AJ  
Sample : I.BLK  
Misc :  
ALS Vial : 9 Sample Multiplier: 1

Instrument :  
FID\_C  
ClientSampled :  
I.BLK

Integration File: sample.E  
Quant Time: Mar 24 04:22:53 2020  
Quant Method : Z:\pestpcbsrv\HPCHEM1\FID\_C\Method\Alaphatic EPH 032320.M  
Quant Title : GC Extractables  
QLast Update : Tue Mar 24 03:33:56 2020  
Response via : Initial Calibration  
Integrator: ChemStation 6890 Scale Mode: Large solvent peaks clipped

Volume Inj. : 1 ul  
Signal Phase : Rxi-1ms  
Signal Info : 20M x 0.18mm x 0.18um

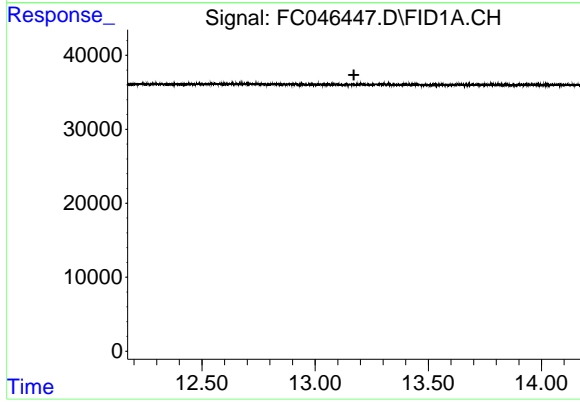




#9 ortho-Terphenyl (SURR)

R.T.: 0.000 min  
Exp R.T. : 11.754 min  
Response: 0  
Conc: N.D.

Instrument :  
FID\_C  
ClientSampled :  
I.BLK



#12 1-chlorooctadecane (SURR)

R.T.: 0.000 min  
Exp R.T. : 13.171 min  
Response: 0  
Conc: N.D.